

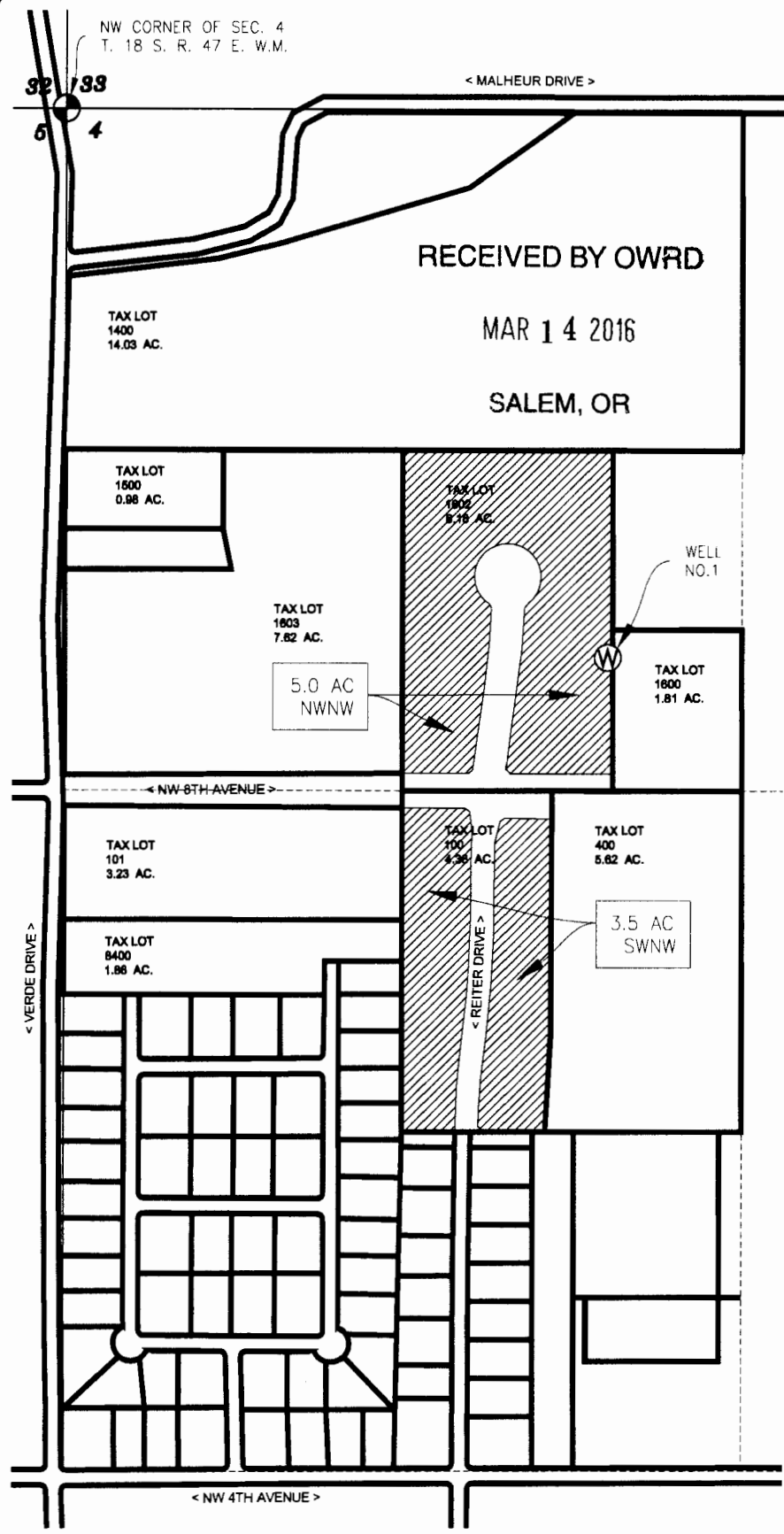
**WR. 1**  
 SHEET NO. 1 OF 1  
 DWG NO. CO16001.dwg  
 JOB NO. CO-16001

**CK3, LLC**  
 CIVIL-STRUCTURAL-ELECTRICAL  
 ENGINEERING, SURVEYING & PLANNING  
 368 S.W. 5th Avenue  
 Ontario, Oregon 97914  
 PH: (541) 889-5411  
 FAX: (541) 889-2074  
 E-MAIL: CK3@fmtc.com

APPLICATION MAP  
 Within the NW 1/4 of Sec. 4  
 T. 18 S. R. 47 E. W.M.  
 MALHEUR COUNTY, OREGON  
 Sage Ridge Place, LLC  
 P.O. Box 309  
 ONTARIO, OREGON 97914

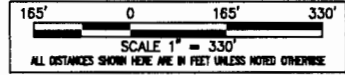
ENG. BY: NA  
 APR. BY: NA  
 DWG. BY: PJW  
 DATE: 03/07/16  
 SCALE: 1"=330'

THIS DRAWING, AND ALL INFORMATION HEREIN, REMAIN THE PROPERTY OF CK3, L.L.C. ALL RIGHTS ARE EXPRESSLY RESERVED AND IT MAY NOT BE REPRODUCED IN WHOLE OR PART WITHOUT THE EXPRESSED WRITTEN CONSENT OF CK3, L.L.C.



LEGEND	
DISCRIPTION	SYMBOLS
SECTION LINE	_____
QUARTER-QUARTER LINE	- - - - -
TAX LOT LINE	_____
ROAD	=====
WELL	⊙
SECTION CORNER	36 31 + 1 6
RECOGNIZED SURVEY CORNER	⊕

**POINT OF APPROPRIATION**  
 WELL No. 1: 1065' SOUTH AND 1055' EAST OF THE N.W. CORNER OF SECTION 4, T.18 S., R.47 E., W.M.



**DISCLAIMER**

THIS MAP WAS MADE TO ACCOMPANY THE APPLICATION FOR A WATER RIGHT. SECTIONAL LINES SHOWN ARE APPROXIMATE AND THIS MAP IS NOT INTENDED FOR ANY OTHER USE AND DOES NOT GUARANTEE LAND OWNERSHIP.

G-18213