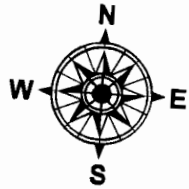


Map to Accompany New Surface Water Application for Jeff Phillips



Scale: 1' = 600'

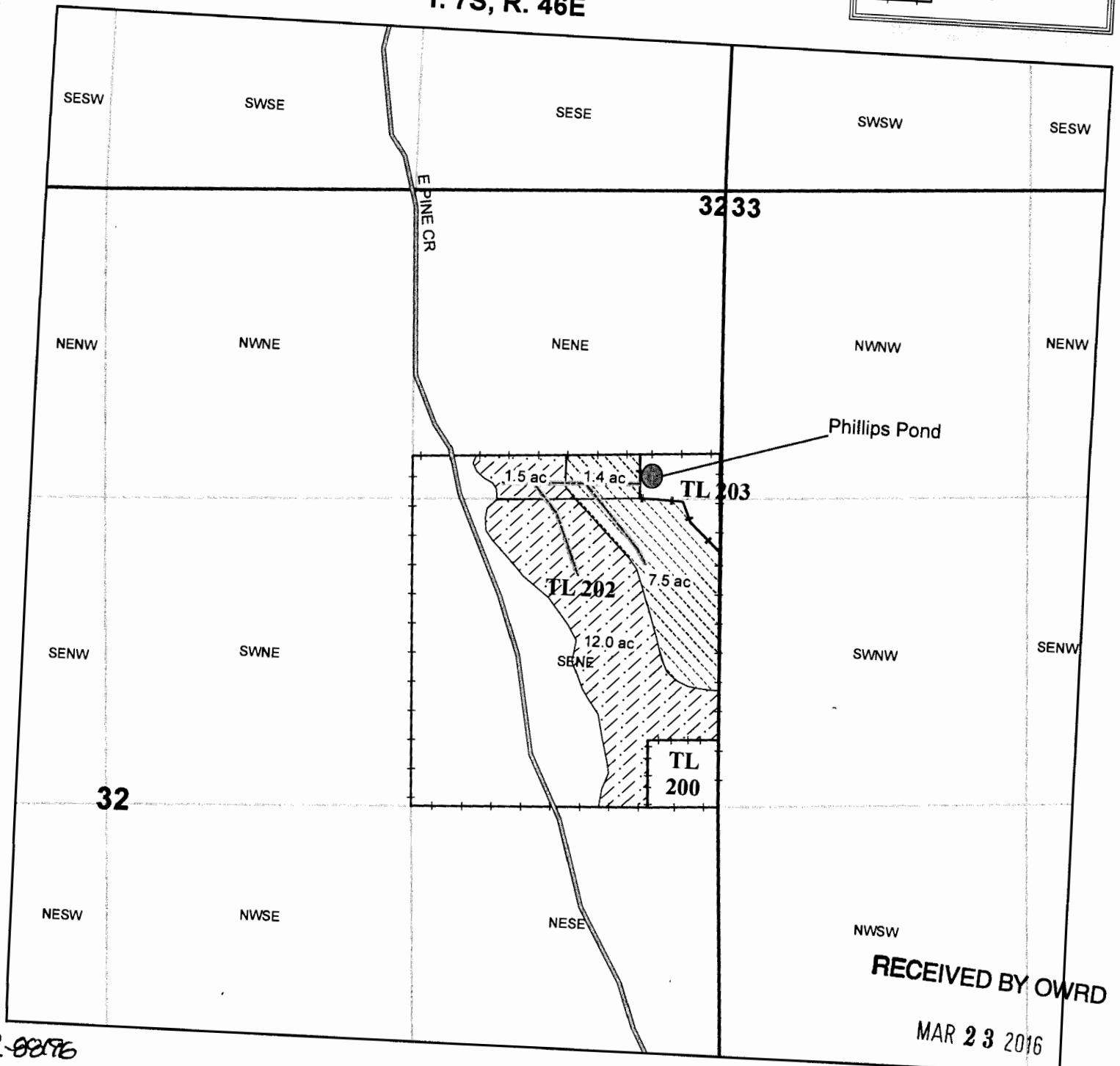
Legend

- Ditches
- halfway_e_pine

Irrigation

- Primary
- Supplemental
- taxlot

T. 7S, R. 46E

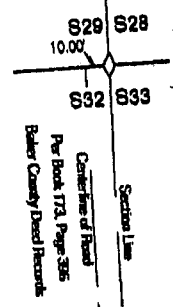
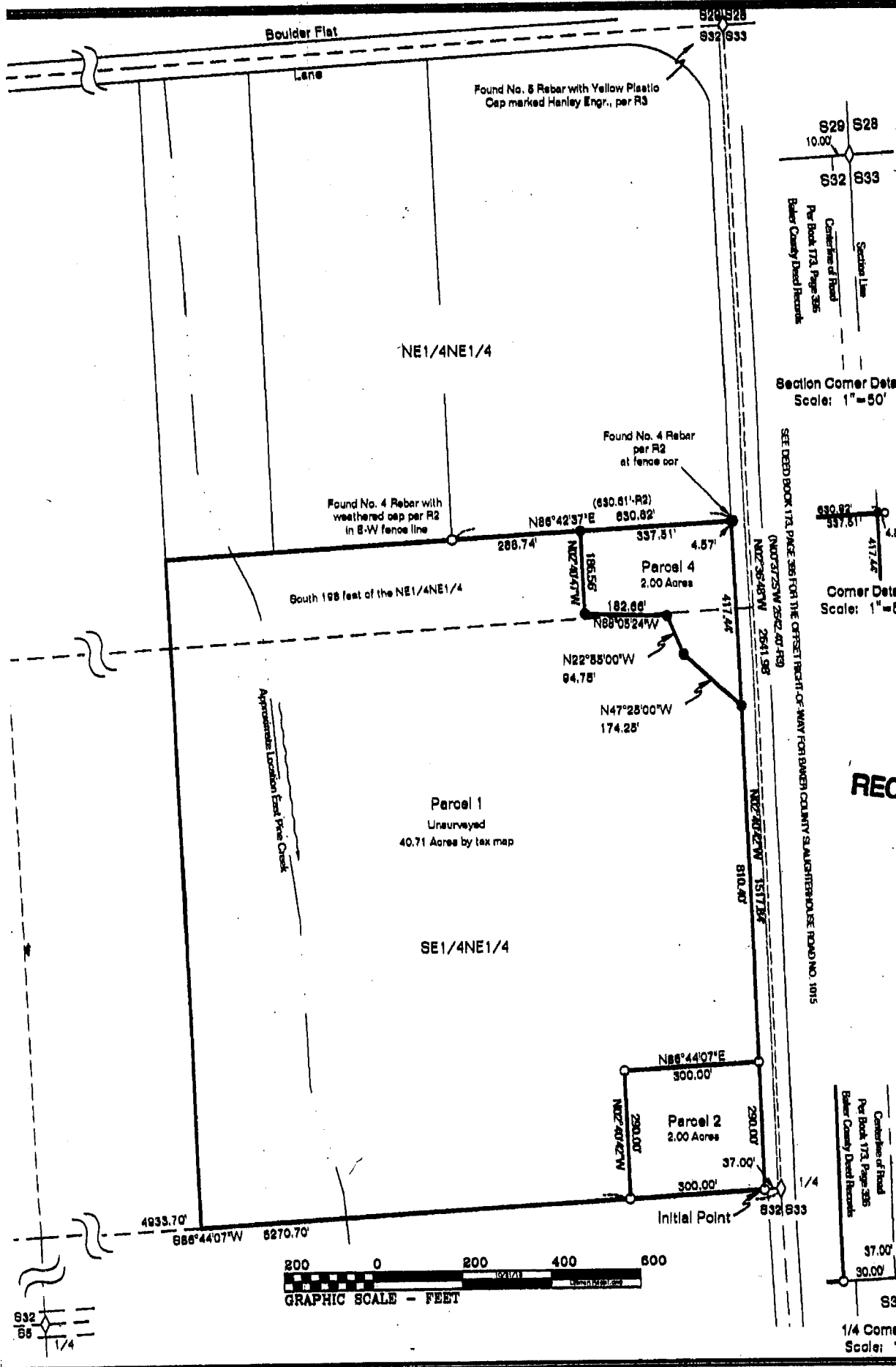


RECEIVED BY OWRD

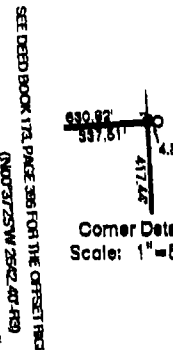
MAR 23 2016

SALEM, OR

R-92576

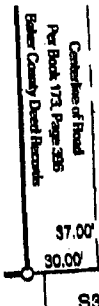


Section Corner Detail
Scale: 1" = 50'

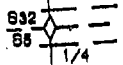
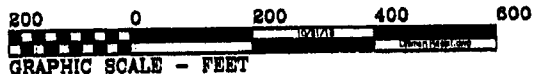


Corner Detail
Scale: 1" = 50'

RECEIVED BY OW
MAR 23 2016
SALEM OR



1/4 Corner
Scale: 1"



R-88196

SD P2013-006

Replat of Partition Plat No. 2012-005 situated in the E1/2 NE1/4 of Section 32, T7S, R46E, WM, Baker County, Oregon

DECLARATION

Know all men by these presents, that I, Walter L. Dillman, as tenant by the entirety, do hereby declare that I have caused said Partition Plat 2012-006 to be replatted, vacating Parcel 3 and creating Parcel 4, in accordance with Oregon Revised Statutes Chapter 92.

Walter L. Dillman 12-10-13
Walter L. Dillman Date

ACKNOWLEDGEMENT

This is to certify that on this 10th day of December 2013, before me a notary public, personally appeared Walter L. Dillman, to me known to be the individual who executed the foregoing Declaration and acknowledged to me that he executed the same freely and voluntarily for the purpose therein named.

STATE OF OREGON }
COUNTY OF BAKER } ss

Jeri L. Shaffer
Notary Signature

Jeri L. Shaffer
Printed Name

452481
Commission No.

Oct 17, 2014
My Commission Expires



APPROVALS

I have reviewed this plat under authority of ORS 92.100 and find it complies with ORS Chapter 92 and ORS 209.230.

Theresa H. Huley 12-10-2013
Baker County Surveyor Date

I have reviewed this plat and find it complies with the regulations of Baker County, Oregon.

Holly R. [Signature] 12/17/2013
Interim Baker County Planning Director Date

All ad valorem taxes and other special assessments due pursuant to law have been assessed and collected.

Alice Duvall-Dinner by Tracy Thomsen Dec 18, 2013
Baker County Treasurer Date

STATE OF OREGON }
COUNTY OF BAKER } ss

I do hereby certify that the attached replat was received for

recording on the 18 day of December, 2013,

at 3:35 o'clock PM as slide No. C-184

Fee \$6.00 instrument No. B1350-0358

Jamara J. Green
Baker County Clerk

Loren Phillips
Deputy

RECEIVED BY OWRD

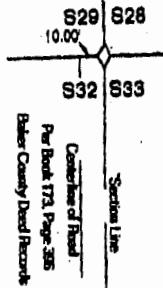
MAR 2 2013

SALE OR

FILED
BAKER COUNTY SURVEYOR
SURVEY No. 748

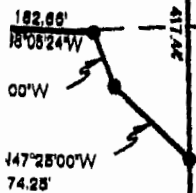
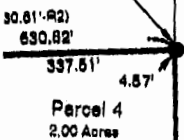
829 828
832 833

Yellow Plastic
rod, per R3



Section Corner Detail
Scale: 1" = 50'

Found No. 4 Rebar
per R2
at fence cor



147°25'00"W
74.25'

SEE DEED BOOK 173 PAGE 386 FOR THE OFFSET BRIGHT-OF-WAY FOR BAKER COUNTY SAUERHEIMER ROAD NO. 1015

N102°25'21\"/>

N102°25'21\"/>

N102°25'21\"/>

N102°25'21\"/>

N102°25'21\"/>

N102°25'21\"/>

N102°25'21\"/>

N102°25'21\"/>

N102°25'21\"/>

N102°25'21\"/>

N102°25'21\"/>

N102°25'21\"/>

N102°25'21\"/>

N102°25'21\"/>

N102°25'21\"/>

N102°25'21\"/>

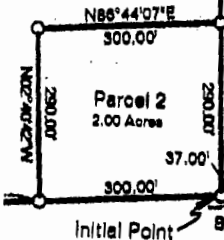
N102°25'21\"/>

N102°25'21\"/>

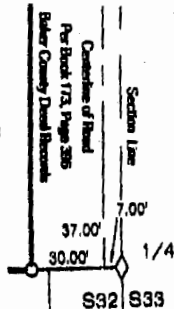
N102°25'21\"/>



Corner Detail
Scale: 1" = 50'



600



1/4 Corner Detail
Scale: 1" = 50'

20096