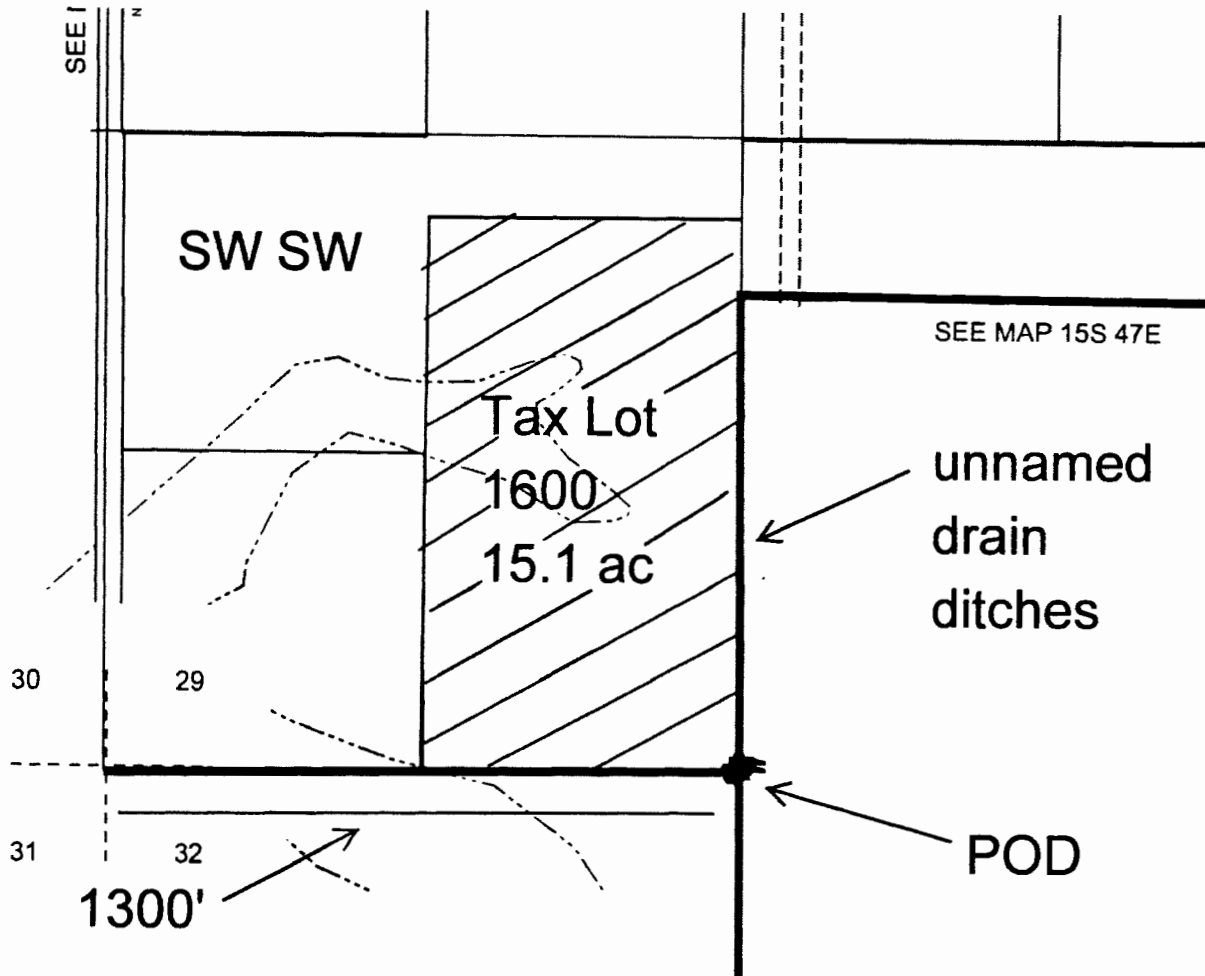


15 S, 47 E, Section 29



1" = 400'



RECEIVED

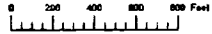
APR 18 2016

WATER RESOURCES DEPT
SALEM, OREGON

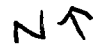
5-88212

5-88212

THIS MAP WAS PREPARED FOR ASSESSMENT PURPOSE ONLY

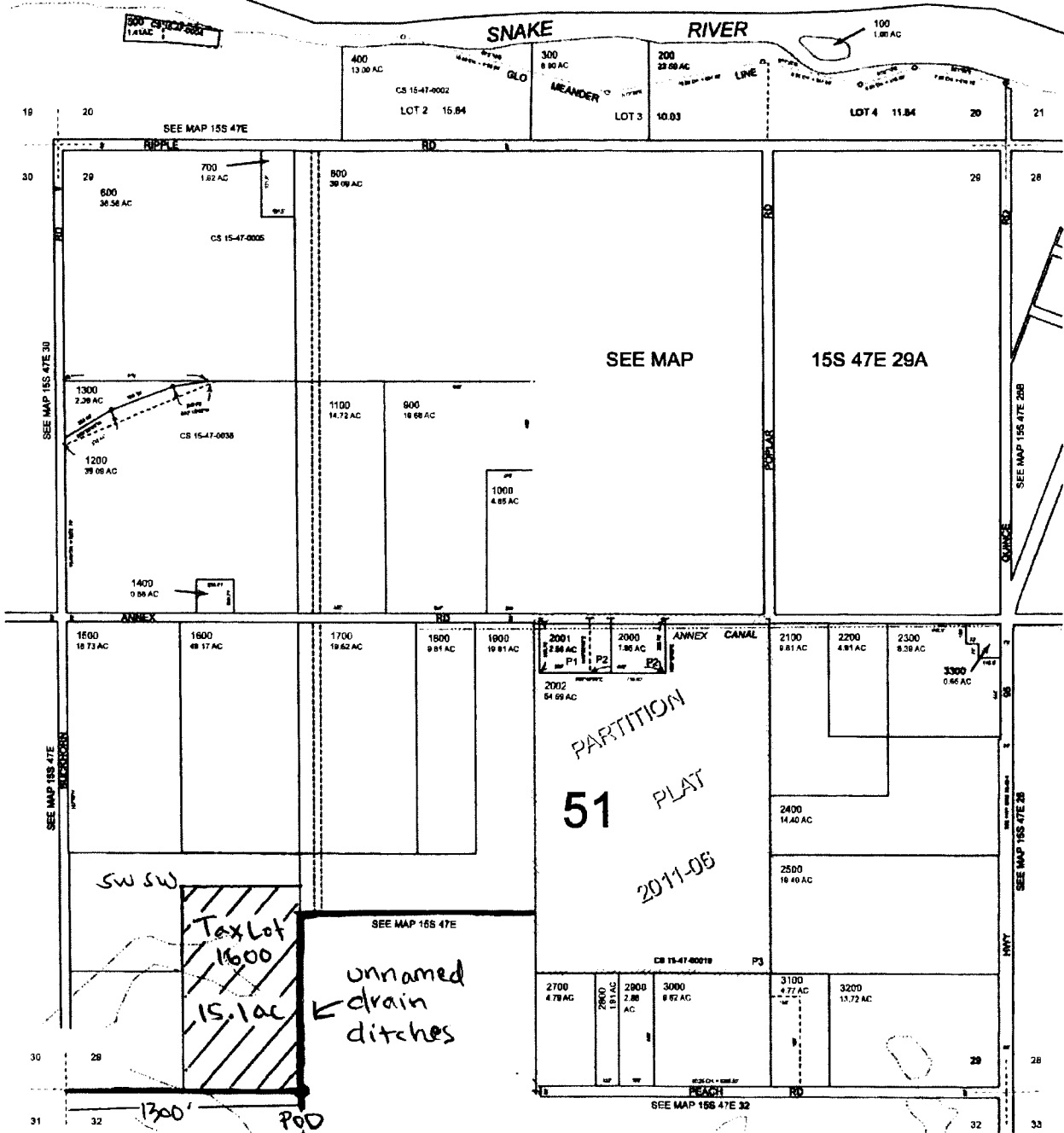


SECTION 29 T.15S. R.47E. W.M. MALHEUR COUNTY IDAHO 1" = 400'



15S47E29 & INDEX

Cancelled 2000



RECEIVED BY OWRD

APR 11 2016

SALEM, OR

SW SW Tax Lot 1600 15.1ac

unnamed drain ditches

1300' POD

Revised: MA 10/22/2014

& INDEX 15S47E29