

THIS MAP WAS PREPARED FOR ASSESSMENT PURPOSE ONLY

0 200 400 600 800 Feet

SECTION 36 T.7S. R.45E. W.M.
BAKER COUNTY
1" = 400'

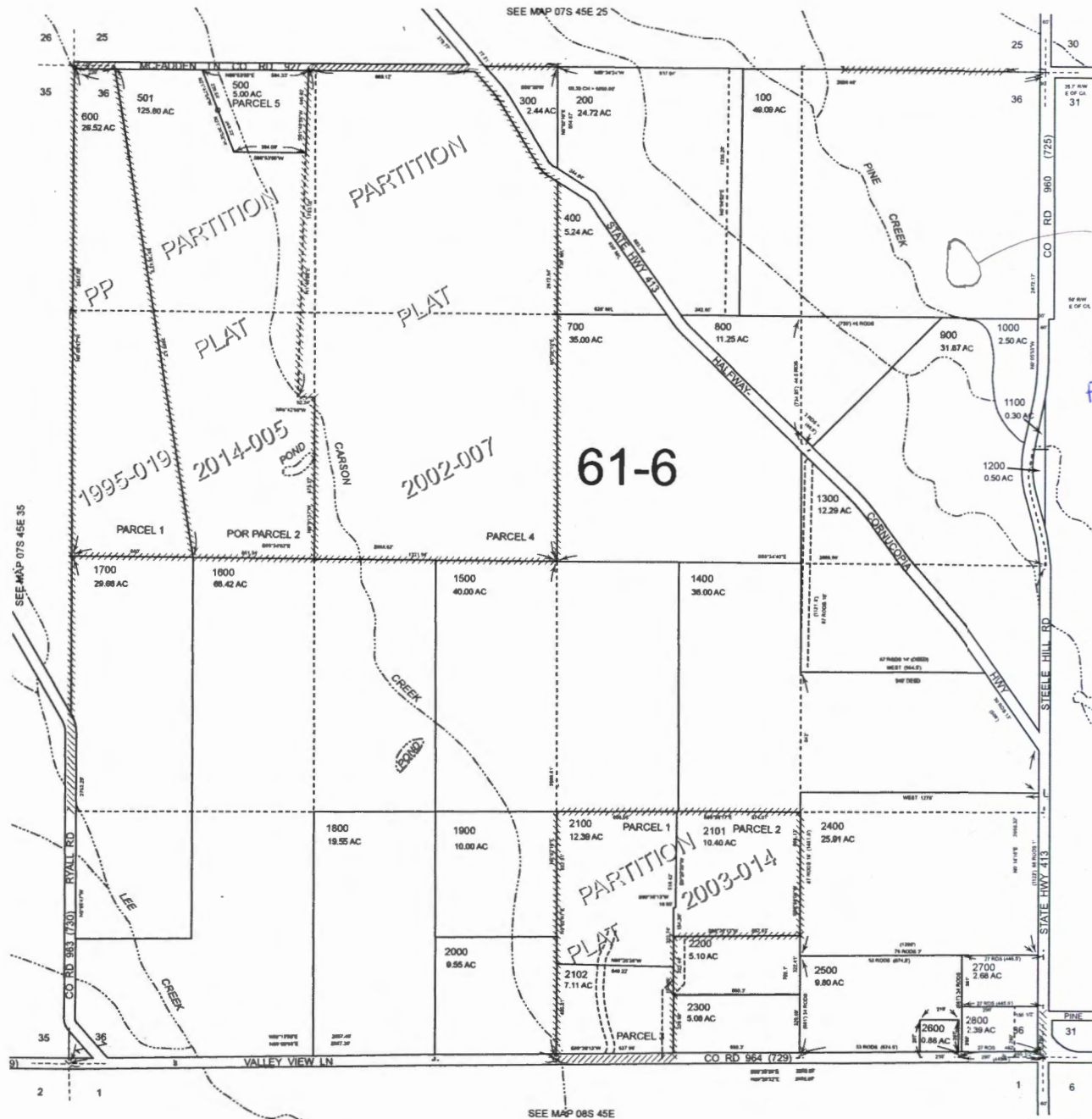
07S45E36

Cancelled
502
2900

RECEIVED BY OWRD

APR 29 2016

SALEM, OR



POUND LOCATION
1150' SOUTH
AND 300' WEST
FROM NE CORNER
OF SECT 36
T.7S, R.45E

SEE MAP 07S 45E 31

SEE MAP 08S 45E

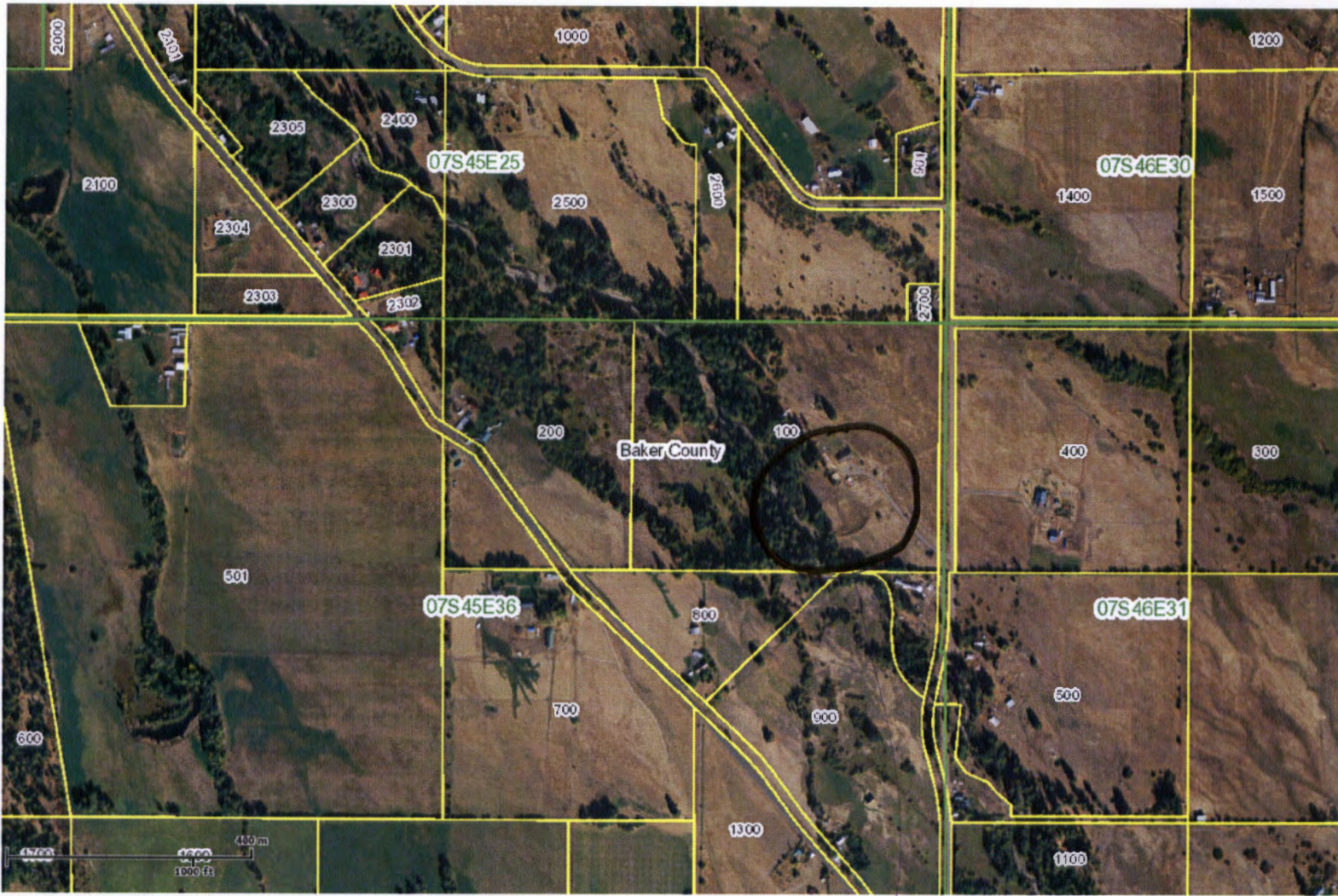
Revised: DBJ
09/09/2014

07S45E36

R-08219

The Oregon Map

New Directions



Copyright 2011 ORMAP. All rights reserved. Fri Mar 4 2016 03:18:39 PM.

PROPOSED POND

RECEIVED BY OWRD

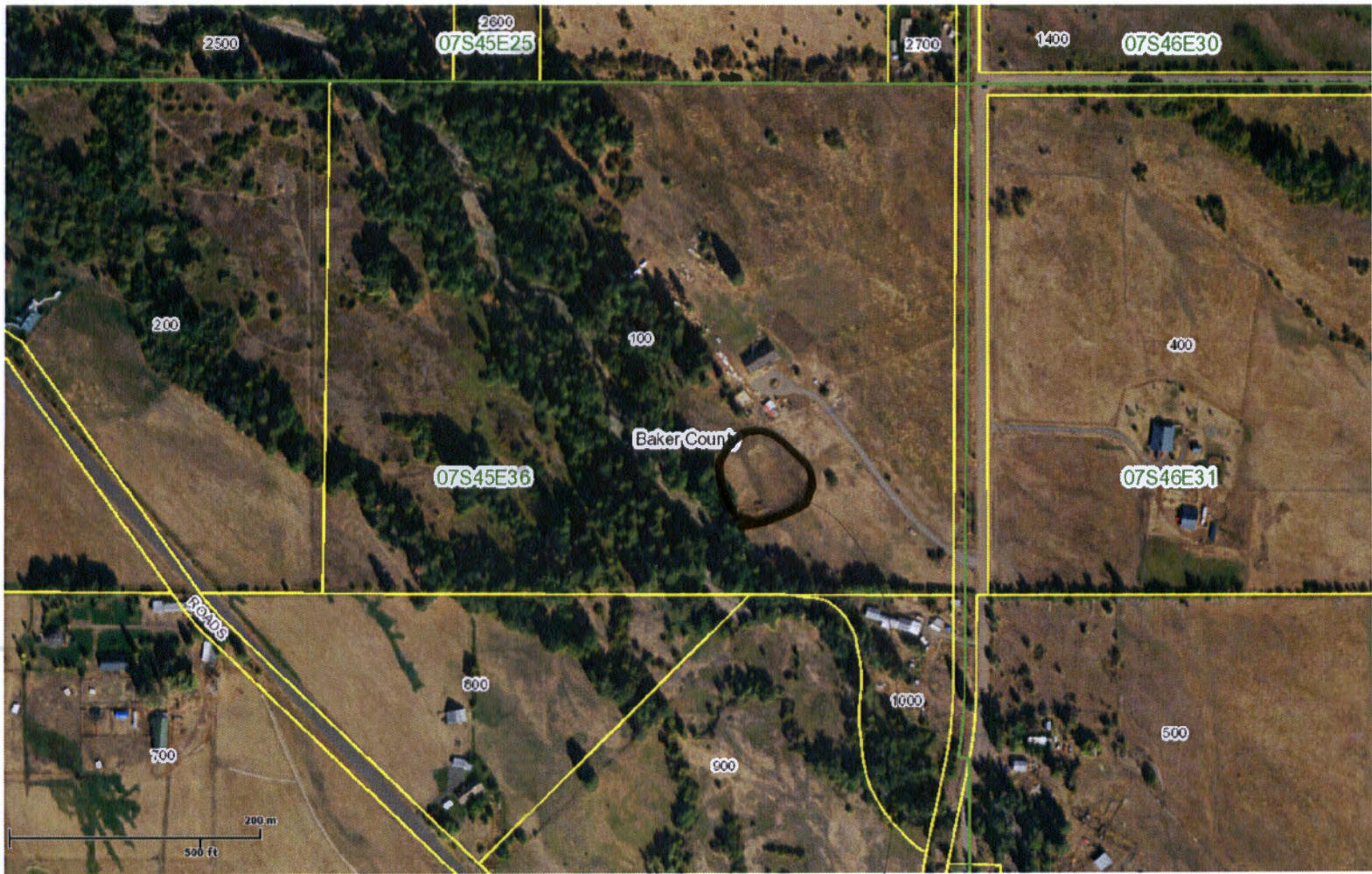
APR 29 2016

SALEM, OR

R-88219

The Oregon Map

New Directions



Copyright 2011 ORMAP. All rights reserved. Fri Mar 11 2016 09:51:39 AM.

POND
LOCATION

RECEIVED BY OWRD

APR 29 2016

SALEM, OR

R-88219