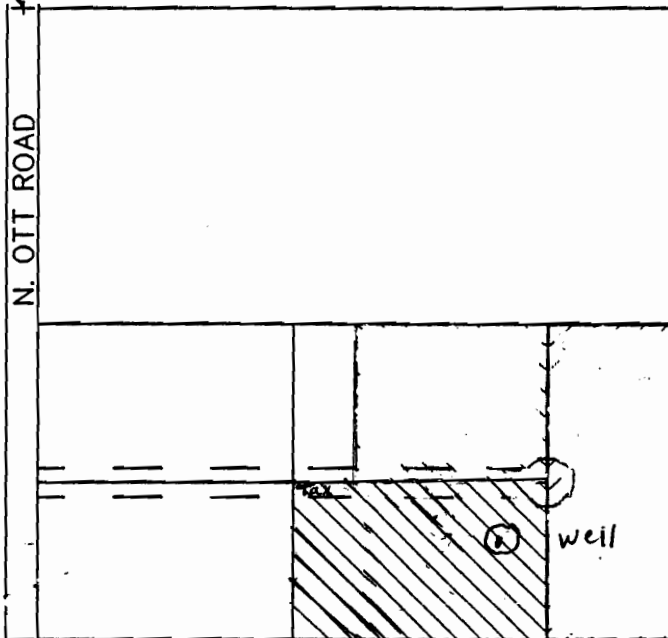


T 5N, R 29E, WM
NW1/4 SW1/4, SECTION 31
UMATILLA COUNTY

Tax Lot 403

WEST
1/4 CORNER



SCALE 1" = 400'

⊙ WELL - Located approximately 1140' S
and 980' E of W 1/4 corner of
Section 31



3.9 acres to be irrigated in NW 1/4, SW 1/4, Section 31
T.5N R.29E W.M. Tax Lot 403

RECEIVED

APR 13 2007

WATER RESOURCES DEPT
SALEM OREGON