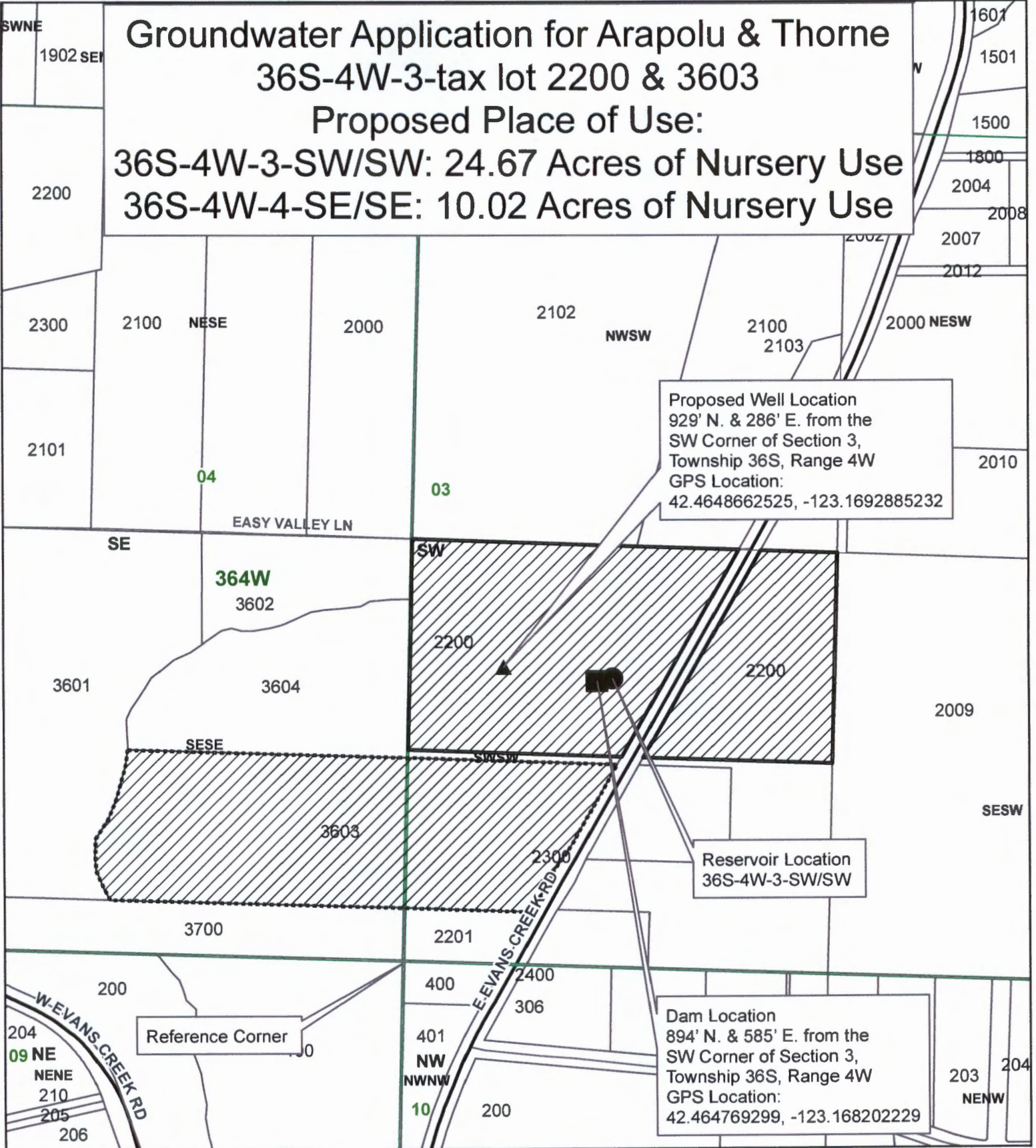


Groundwater Application for Arapolu & Thorne 36S-4W-3-tax lot 2200 & 3603

Proposed Place of Use:
36S-4W-3-SW/SW: 24.67 Acres of Nursery Use
36S-4W-4-SE/SE: 10.02 Acres of Nursery Use



Proposed Well Location
929' N. & 286' E. from the
SW Corner of Section 3,
Township 36S, Range 4W
GPS Location:
42.4648662525, -123.1692885232

Reservoir Location
36S-4W-3-SW/SW

Dam Location
894' N. & 585' E. from the
SW Corner of Section 3,
Township 36S, Range 4W
GPS Location:
42.464769299, -123.168202229

Legend

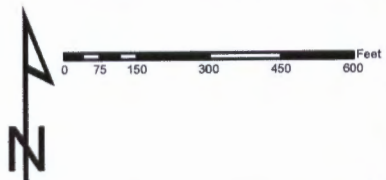
- ▲ Well Location
- Dam Location
- Reservoir Location
- ▨ Place of Use
- ▭ Taxlot 2200
- ▭ Taxlot 3603
- Taxlots
- ▭ Townships
- ▭ Sections
- ▭ Quarter Sections
- ▭ Quarter Quarter Sections

RECEIVED BY OWRD

1 inch = 400 feet

JUN 03 2016

SALEM, OR



JACKSON COUNTY
WATERMASTER

Prepared by Travis Kelly

This map is based on a digital database compiled by Jackson County from a variety of sources. Jackson County cannot accept responsibility for errors, omissions, or positional accuracy. There are no warranties, expressed or implied.

Date: 05/13/2016: 36-4W-3-2200 and 3603 Arapolu and Thorne.mxd; kellyj

G-18311