

SECTION 12, T.36S., R.3W., W.M.
JACKSON COUNTY
1" = 400'



FOR ASSESSMENT AND
TAXATION ONLY

P-008241

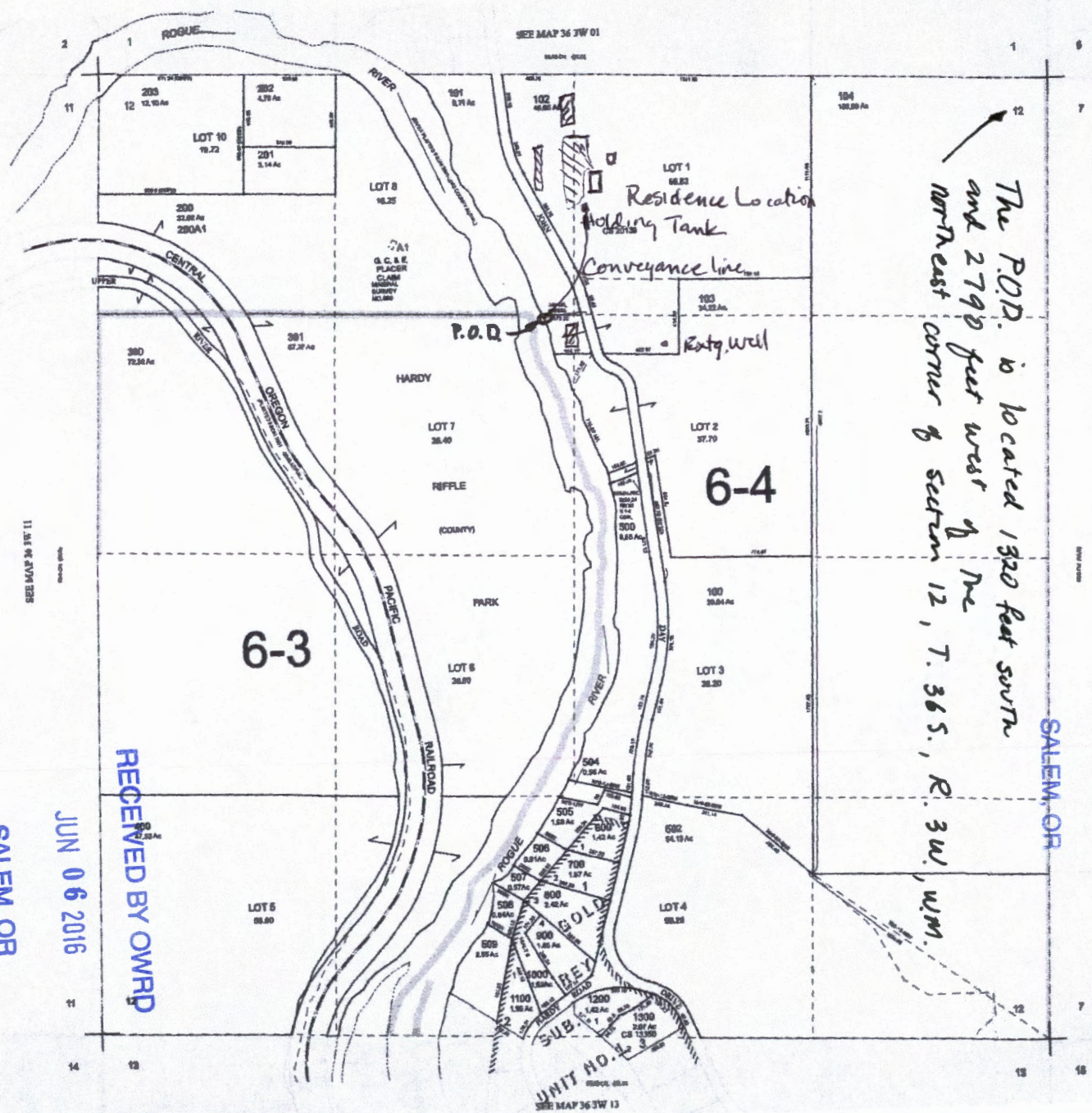
CANCELLED TAX
LOT NUMBERS:
903 ADDED TO 103
510

Property Location Map

RECEIVED BY OWRD

MAY 23 2016



SALEM, OR



The P.O.D. is located 1320 feet south
and 2790 feet west of the
north-east corner of section 12, T. 36 S., R. 3W., W.M.

Area of Use:

- 1/2 Ac in NW of NE } all on T. 12. 102
- 3/4 Ac in NE of NW }
- 1/4 Ac in SW of NE }

 Exty. Irrigated Area
 Future Irrigated Area

RECEIVED BY OWRD
JUN 06 2016
SALEM, OR