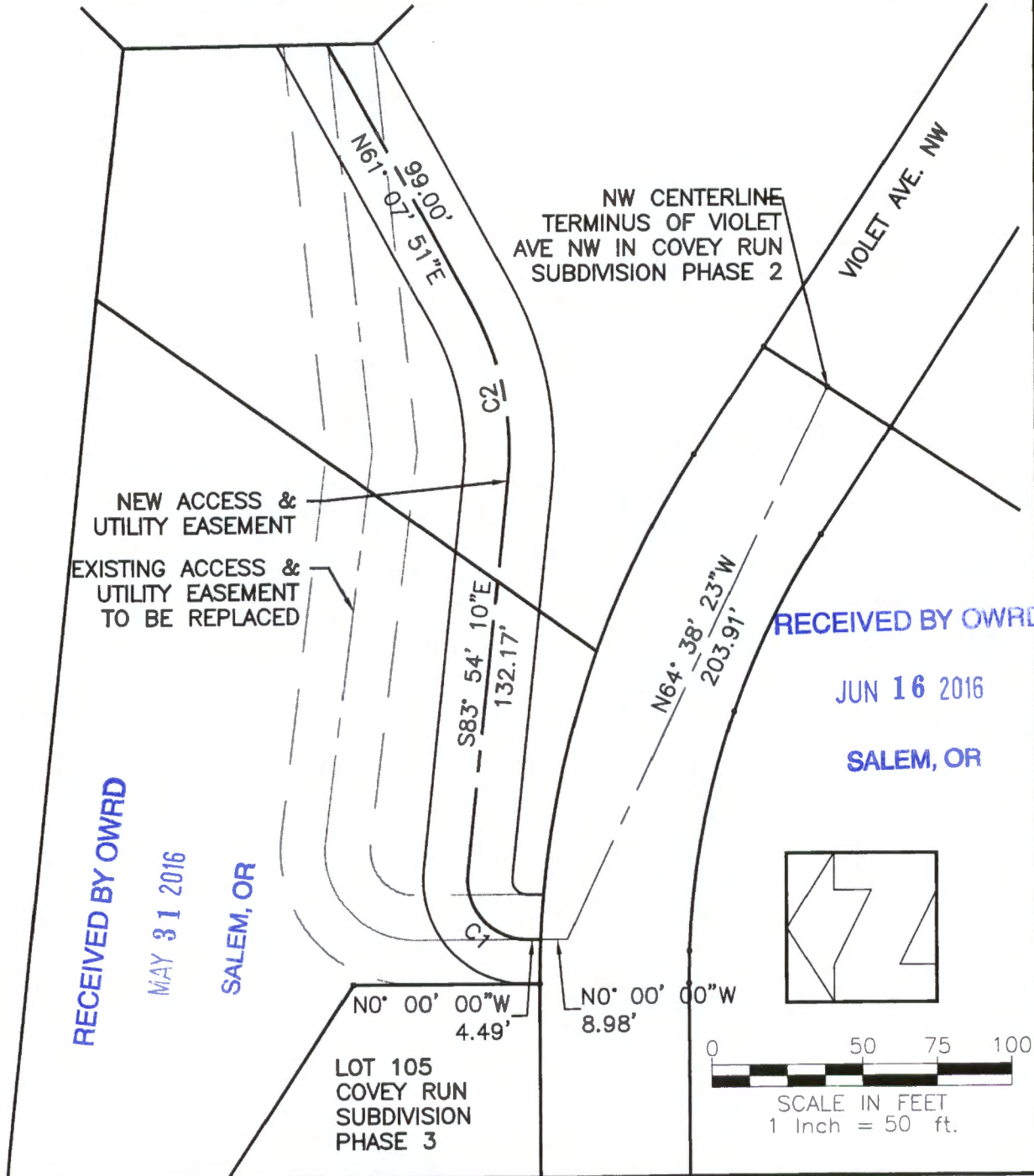


Curve Table					
Curve #	Radius	Delta	Arc Length	Chord Brg	Chord
C1	20.00'	96° 05' 50"	33.54'	N48° 02' 55"E	29.75'
C2	100.00'	34° 58' 00"	61.03'	N78° 36' 51"E	60.09'



DATE 9/8/08  
 SCALE 1"=50'  
 DRAWN PJS  
 FILE 08086/GIS

## ACCESS EASEMENT EXHIBIT 'A'

SHEET  
1  
 OF 1 SHEETS

G-1889





Oregon Water Resources Department

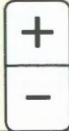
Water Rights Mapping Tool

BENTON COUNTY, OR

SECTION 36 T. 10S., R. 4W.

2304 NW Violet Avenue,

Gr 2394



SCALE 1" = 265'

42865

GR 2394



REFERENCE CORNER

NE CORNER OF SECTION 36

G 17600

GR 2394

WELL IS LOCATED 1737' WEST AND 381' SOUTH OF NE CORNER OF SECTION 36

T.L. 4007

1.04 ACRE

WELL BENT 53958

PORTION OF T.L. 403 0.84 ACRE

OF 2.3 ACRE ZONED EFU TAX LOT TOTAL ACREAGE IS 2.6 ACRES

GR 2394

Violet Ave

NWNE

NENE

76046

76046

RECEIVED BY OWRD

JUN 16 2016

SALEM, OR

NW 10S4W

NW Violet Ave

NW North Albany F

NW 22nd St

GR 2394