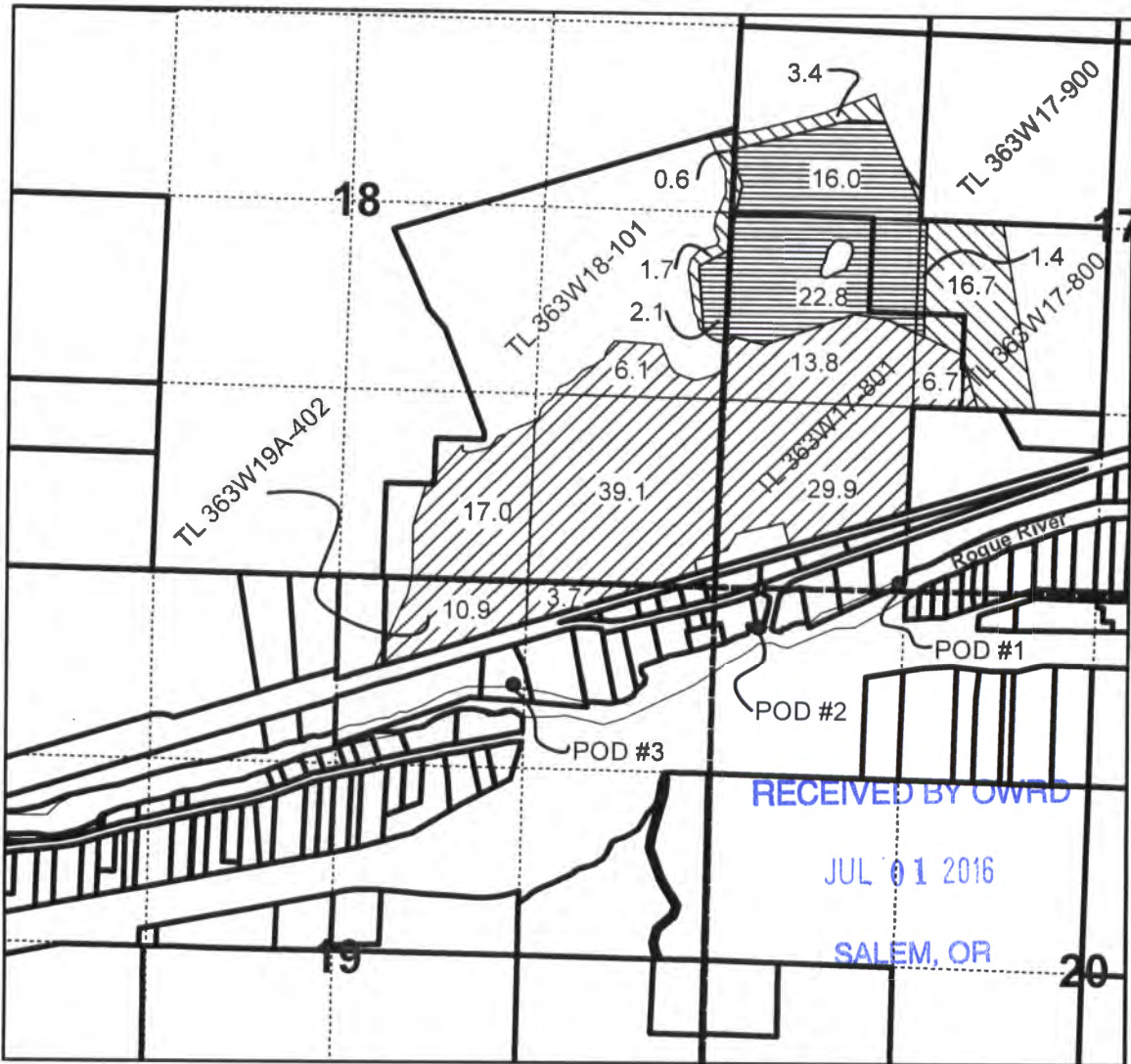





Application Map for the Appropriation of Surface Water of Lost Creek Reservoir

T36S, R3W
Section 17, 18, 19 & 20

Del Rio Vinyards LLC



Legend

-  Supp to C 34035
-  Supp to C 56562
-  Supp to C 5556



1 inch = 1,320 feet

POD #1: SW 1/4 SW 1/4, Sec. 17, T 36 S, R3 W, WM
100' N & 1280' E from SW Cor. Sec 17
TL 363W-17-804

POD #2: NW 1/4, NW 1/4, Sec 20, T 36 S, R3 W, WM
270' S & 270' E from SW Cor, Sec 17
TL 363W-19A-1200

POD #3: NW 1/4 NE 1/4, Sec 19, T 36 S, R 3 W, WM
760' S & 1390' W from SW Cor, Sec 17
TL 363W-19A-501

Note: This map is for water right use only.
It is not intended to provide legal dimensions
or location of property ownership.

5-88253

EXHIBIT

LYING WITHIN
THE WEST HALF OF SECTION 17,
THE EAST HALF OF SECTION 18,
NORTHEAST QUARTER OF SECTION 19 AND
THE NORTHWEST QUARTER OF SECTION 20,
TOWNSHIP 36 SOUTH, RANGE 3 WEST,
WILLAMETTE MERIDIAN,
JACKSON COUNTY, OREGON

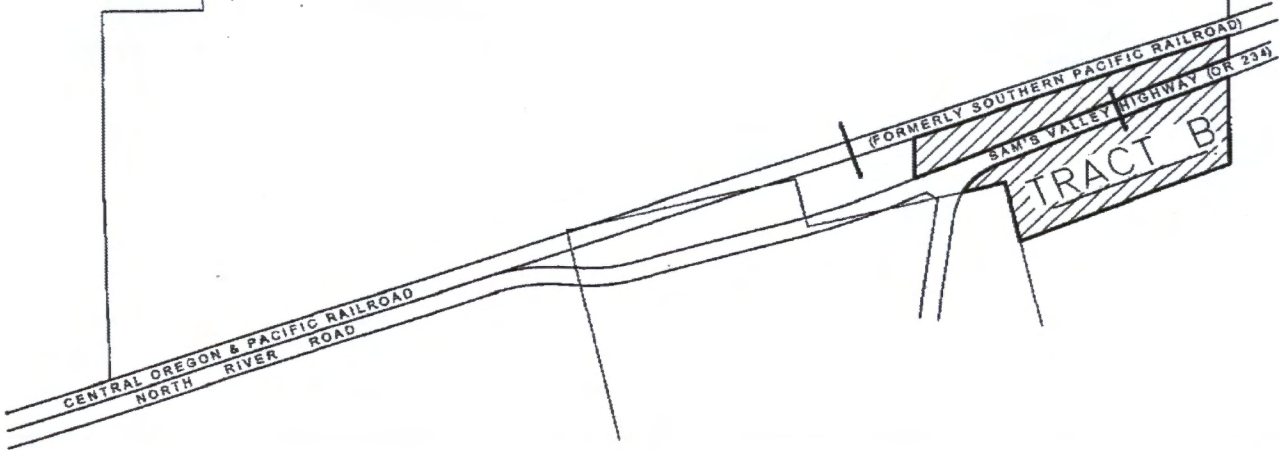
RECEIVED BY OWRD

JUL 01 2016

SALEM, OR

TRACT A

TRACT B

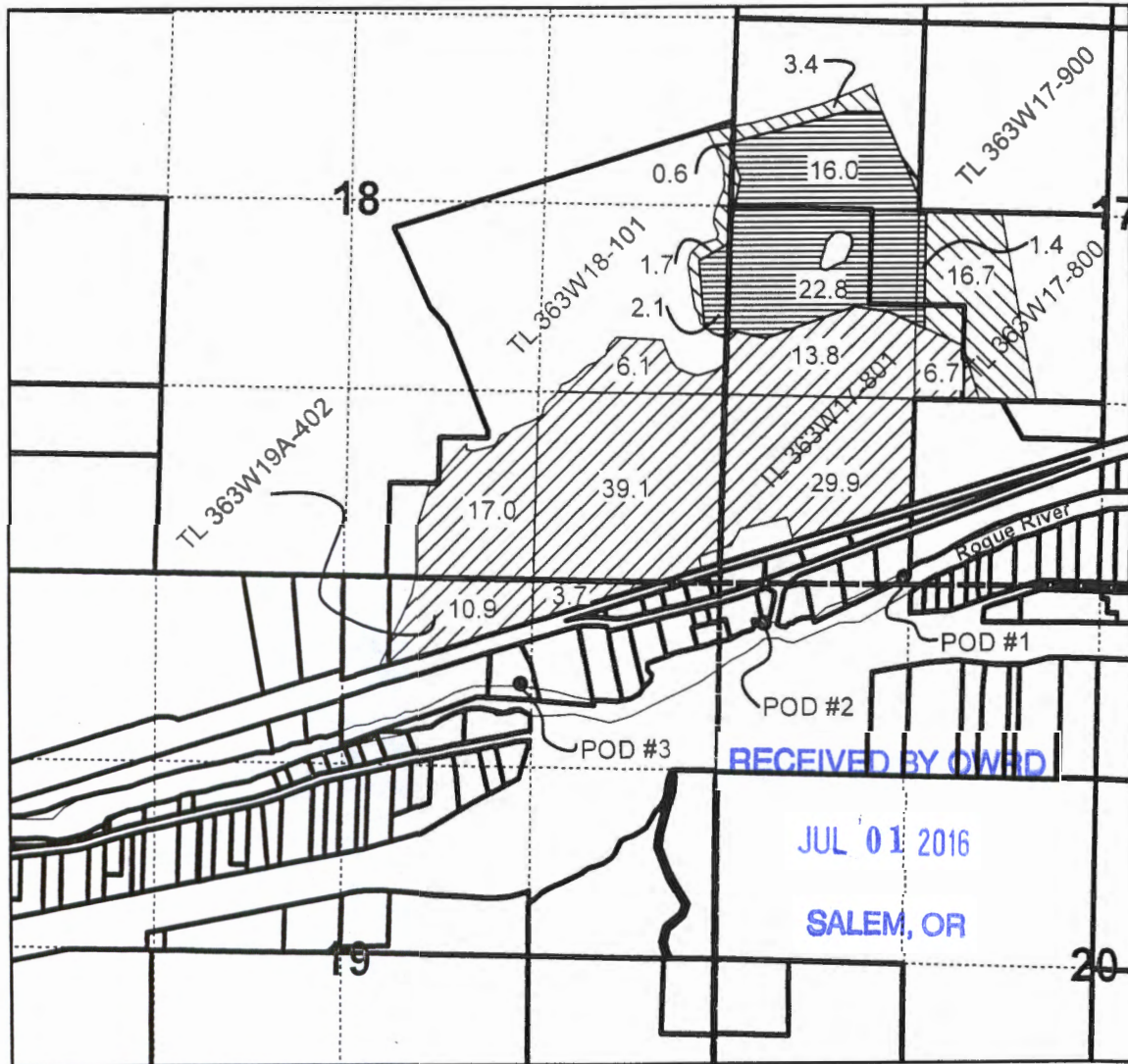


5-88253


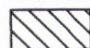
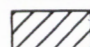
Application Map for the Appropriation of Surface Water of Lost Creek Reservoir

T36S, R3W
Section 17, 18, 19 & 20

Del Rio Vinyards LLC



Legend

-  Supp to C 34035
-  Supp to C 56562
-  Supp to C 5556



1 inch = 1,320 feet

POD #1: SW 1/4 SW 1/4, Sec. 17, T 36 S, R3 W, WM
100' N & 1280' E from SW Cor. Sec 17
TL 363W-17-804

POD #2: NW 1/4, NW 1/4, Sec 20, T 36 S, R3 W, WM
270' S & 270' E from SW Cor, Sec 17
TL 363W-19A-1200

POD #3: NW 1/4 NE 1/4, Sec 19, T 36 S, R 3 W, WM
760' S & 1390' W from SW Cor, Sec 17
TL 363W-19A-501

Note: This map is for water right use only.
It is not intended to provide legal dimensions
or location of property ownership.

5-88253