

T 16 S, R 4 W, Sec 14

1" = 400'

POD is 1670'S & 1290'W of NE cor Sec 14

SEE MAP 16041200

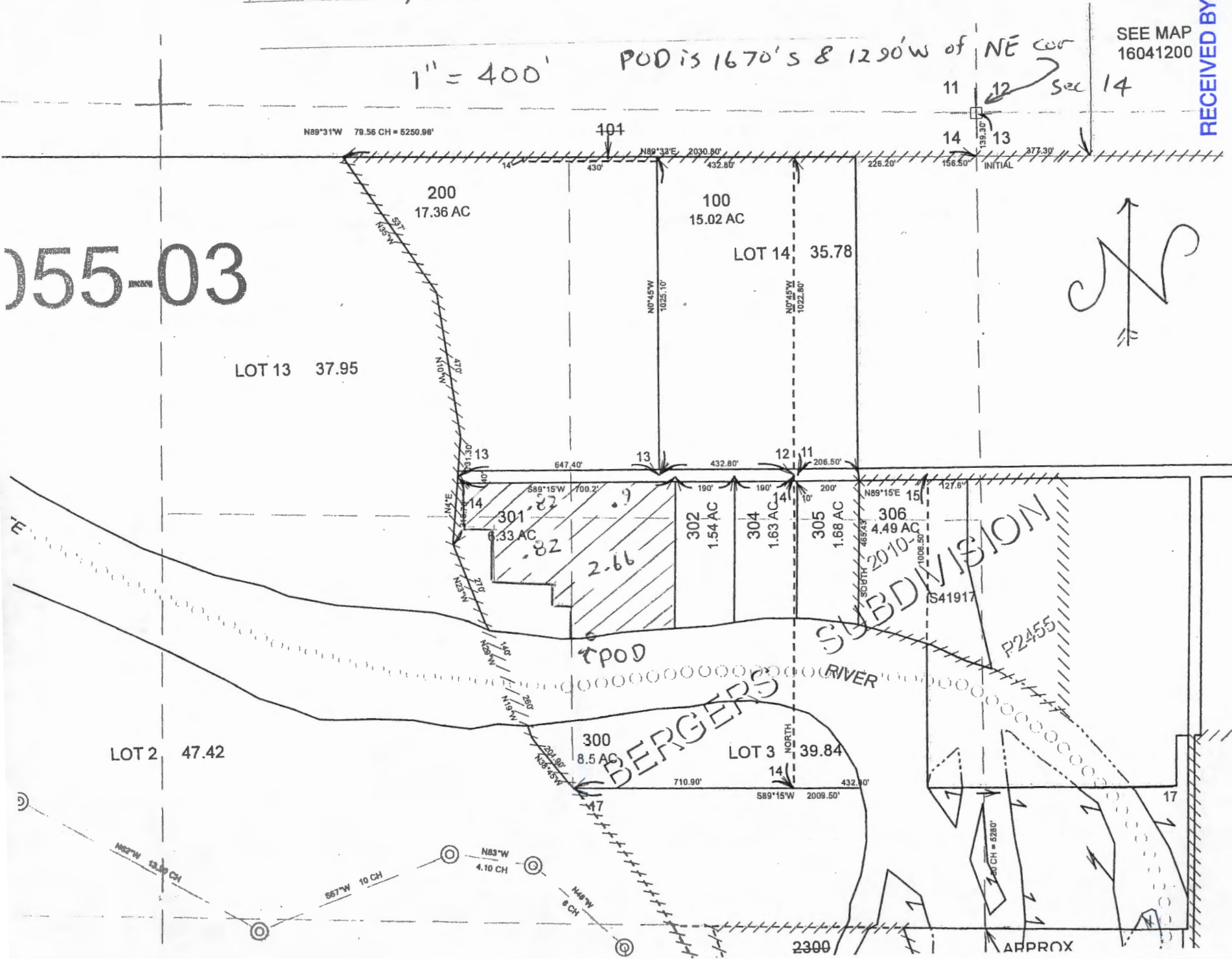
RECEIVED BY OWRD

JUL 11 2016

SALEM, OR

055-03

- CANC
- 101
- 1800
- 2100
- 2200
- 2300
- 500
- 700
- 900
- 303



S-00227