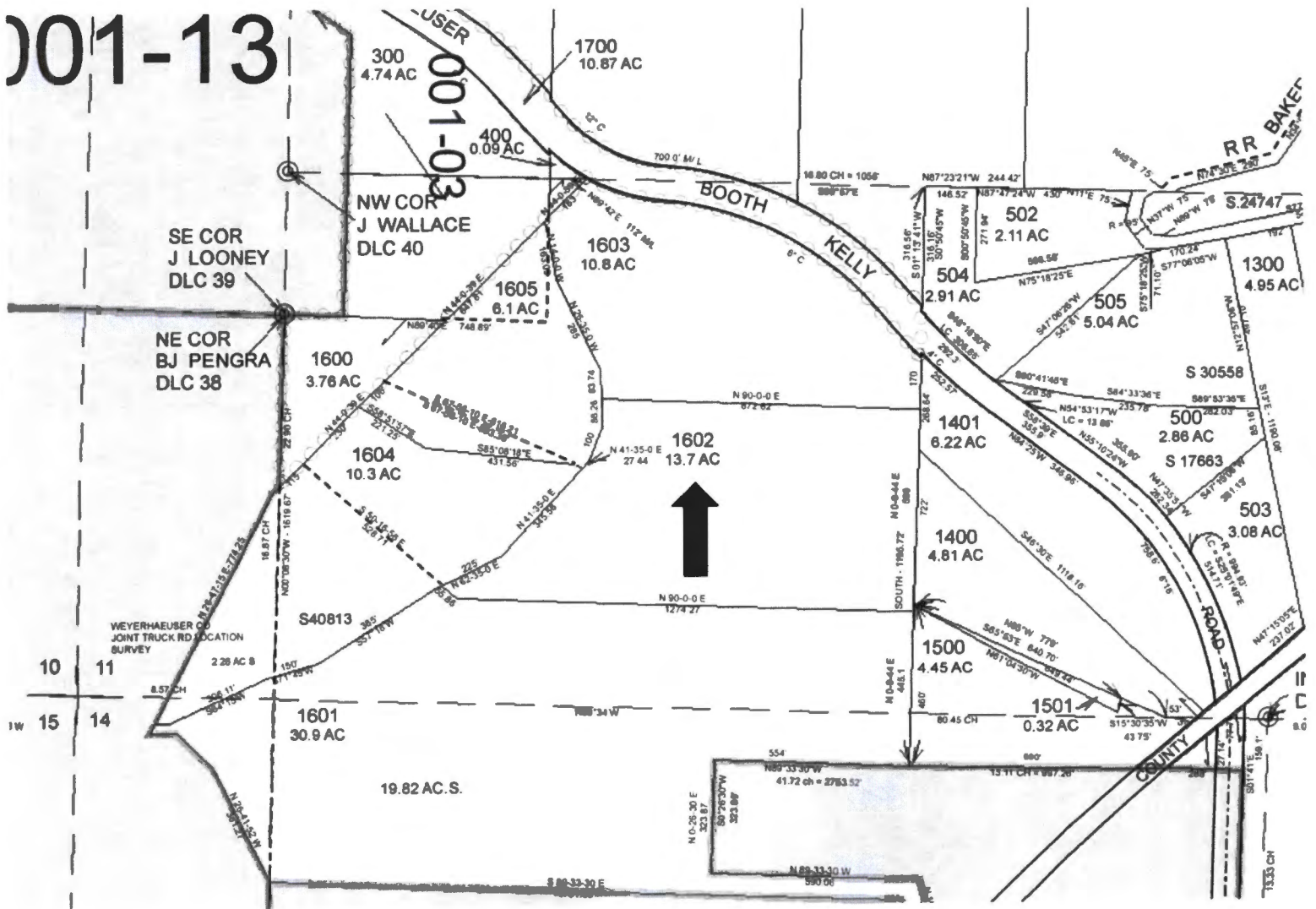




001-13

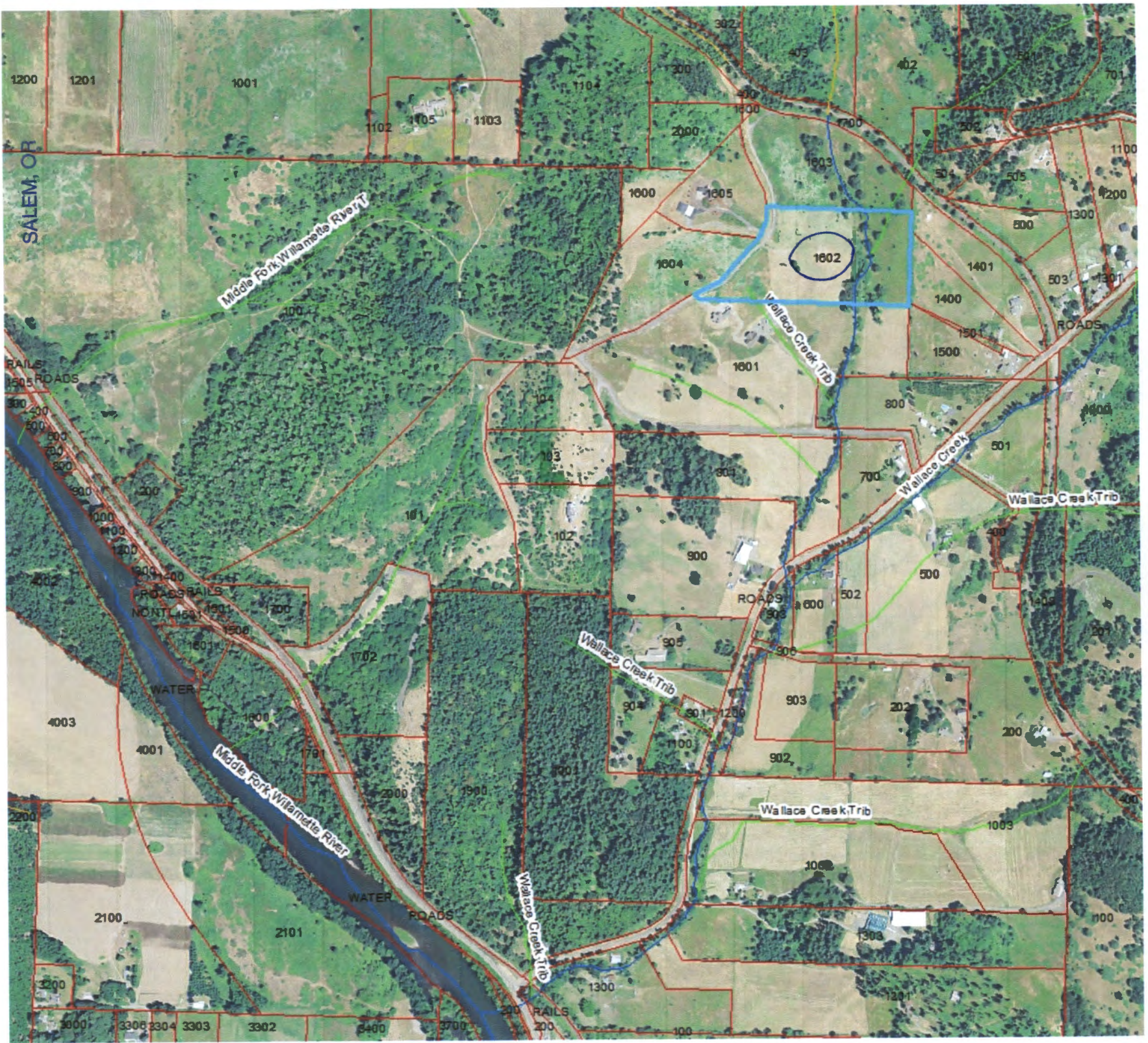


RECEIVED BY OWRD

JUL 11 2016

SALEM, OR

JUL 11 2016





RECEIVED BY OWRD

JUL 11 2016

SALEM, OR



019-34

201  
18.47 AC

118° 53' 41" W

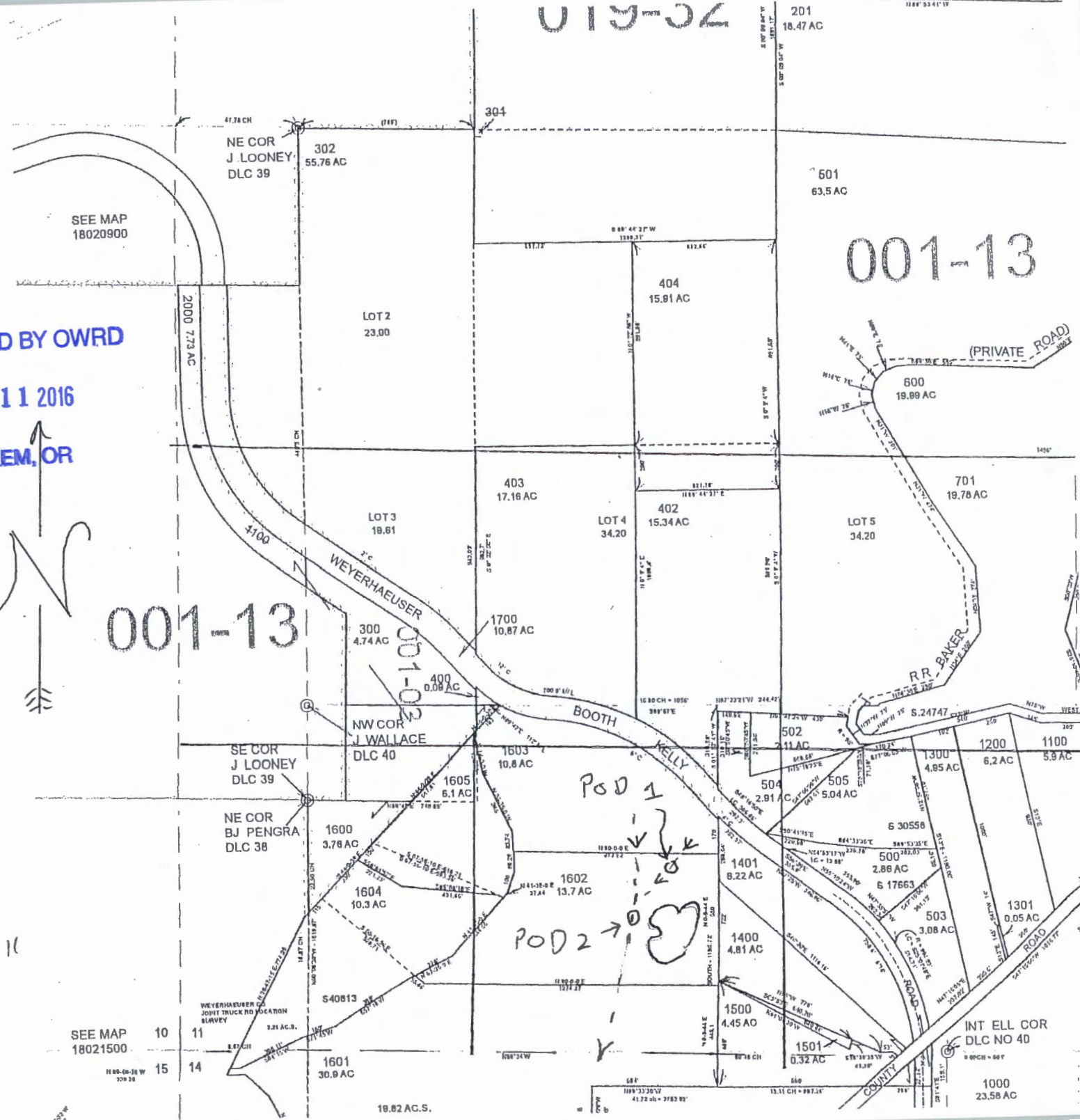
T 18 S R 2 W  
Sec 11  
SE 1/4 SW 1/4  
1" = 600'

RECEIVED BY OWRD

JUL 11 2016  
SALEM, OR

Pond will be  
535' N end  
2250' W from  
SW cor Sec 11

POD 1 830' N, 2200' W  
POD 2 600' N 2030' W  
from SW cor Sec 11



001-13

001-13

LOT 2  
23.00

LOT 3  
18.81

LOT 4  
34.20

LOT 5  
34.20

NE COR  
J. LOONEY  
DLC 39  
302  
55.76 AC

501  
63.5 AC

404  
15.81 AC

403  
17.16 AC

402  
15.34 AC

701  
19.78 AC

300  
4.74 AC

1700  
10.87 AC

400  
0.08 AC

NW COR  
J. WALLACE  
DLC 40

1603  
10.8 AC

502  
2.11 AC

1200  
6.2 AC

1100  
5.9 AC

SE COR  
J. LOONEY  
DLC 39

NE COR  
BJ PENGRA  
DLC 38

1600  
3.78 AC

POD 1

504  
2.91 AC

505  
5.04 AC

1300  
4.85 AC

6 30558

500  
2.88 AC

6 17663

1604  
10.3 AC

1602  
13.7 AC

1401  
8.22 AC

1301  
0.05 AC

503  
3.08 AC

SEE MAP  
18021500

118° 53' 30" W  
209.38

10

15

11

14

1601  
30.9 AC

18.82 AC.S.

SEE  
118° 53' 30" W  
41.72 AC = 3183.91'

15.11 CH = 897.24'

INT ELL COR  
DLC NO 40

1000  
23.58 AC