

T78 RSW 28

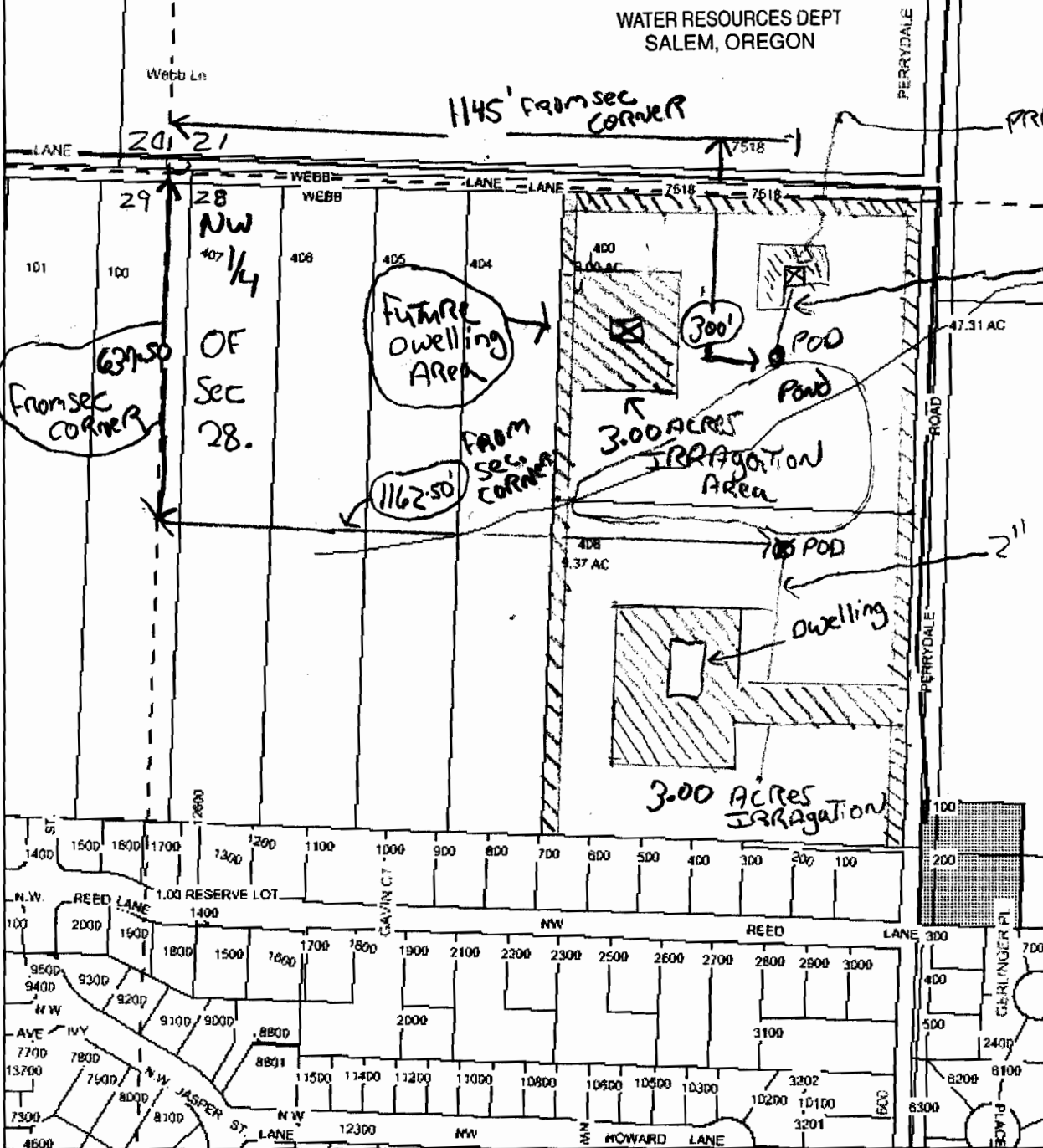
For official information, contact the appropriate Polk County Department.

RECEIVED

JAN 29 2007

WATER RESOURCES DEPT
SALEM, OREGON

Scale 1" = 300'



2 POD LOCATION

TAXLOT # 400 1145' East and 300' south From NW 1/4 of sec 28
CORNER

POD LOCATION

TAXLOT # 408 637.5' South and 1162.5' East from NW 1/4 of sec 28
CORNER

200 DRS 86784