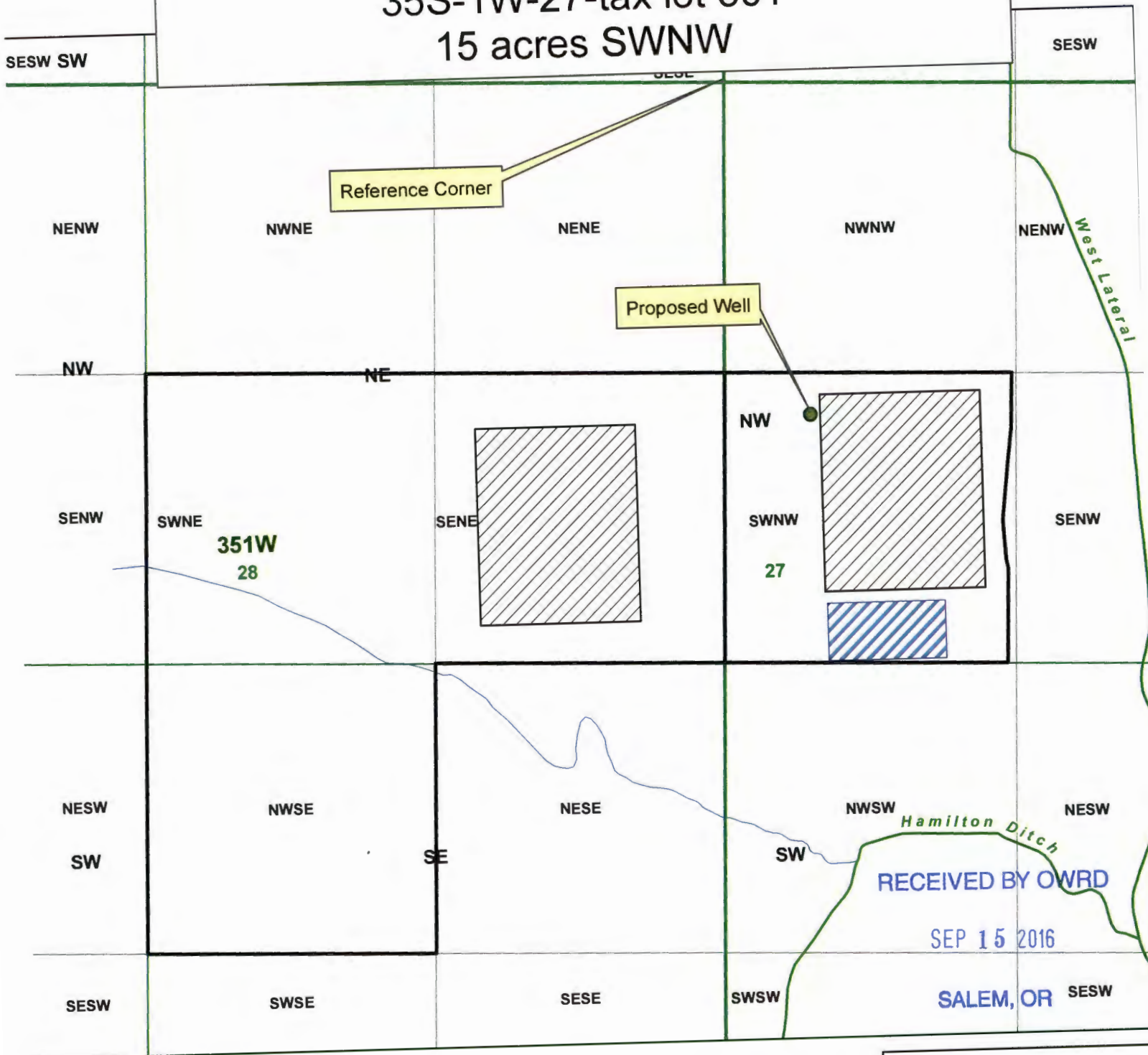


Groundwater Application Map for Nursery Use and Storage in

35S-1W-28 -tax lot 300
15 acres SENE
35S-1W-27-tax lot 301
15 acres SWNW



Reference Corner

Proposed Well

351W
28

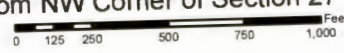
27

RECEIVED BY OWRD
SEP 15 2016
SALEM, OR

- Legend**
- TL 300/301
 - Storage
 - Proposed Well Location
 - POU of Nursery
 - Townships
 - Sections
 - Quarter Sections
 - Quarter Quarter Sections

Proposed well is 1527 ft S
and 392 ft E from NW Corner Section 27

Location of Reservoir is 2500 ft South and 811 ft East from NW Corner of Section 27



1 inch = 632 feet

**JACKSON COUNTY
WATERMASTER**

Prepared by Shavon Haynes

This map is based on a digital database compiled by Jackson County from a variety of sources. Jackson County cannot accept responsibility for errors, omissions, or positional accuracy. There are no warranties, expressed or implied.

Date: 09/12/2016; 35-1w-28- tl 300_35-1w-28- tl 301.mxd; haymes

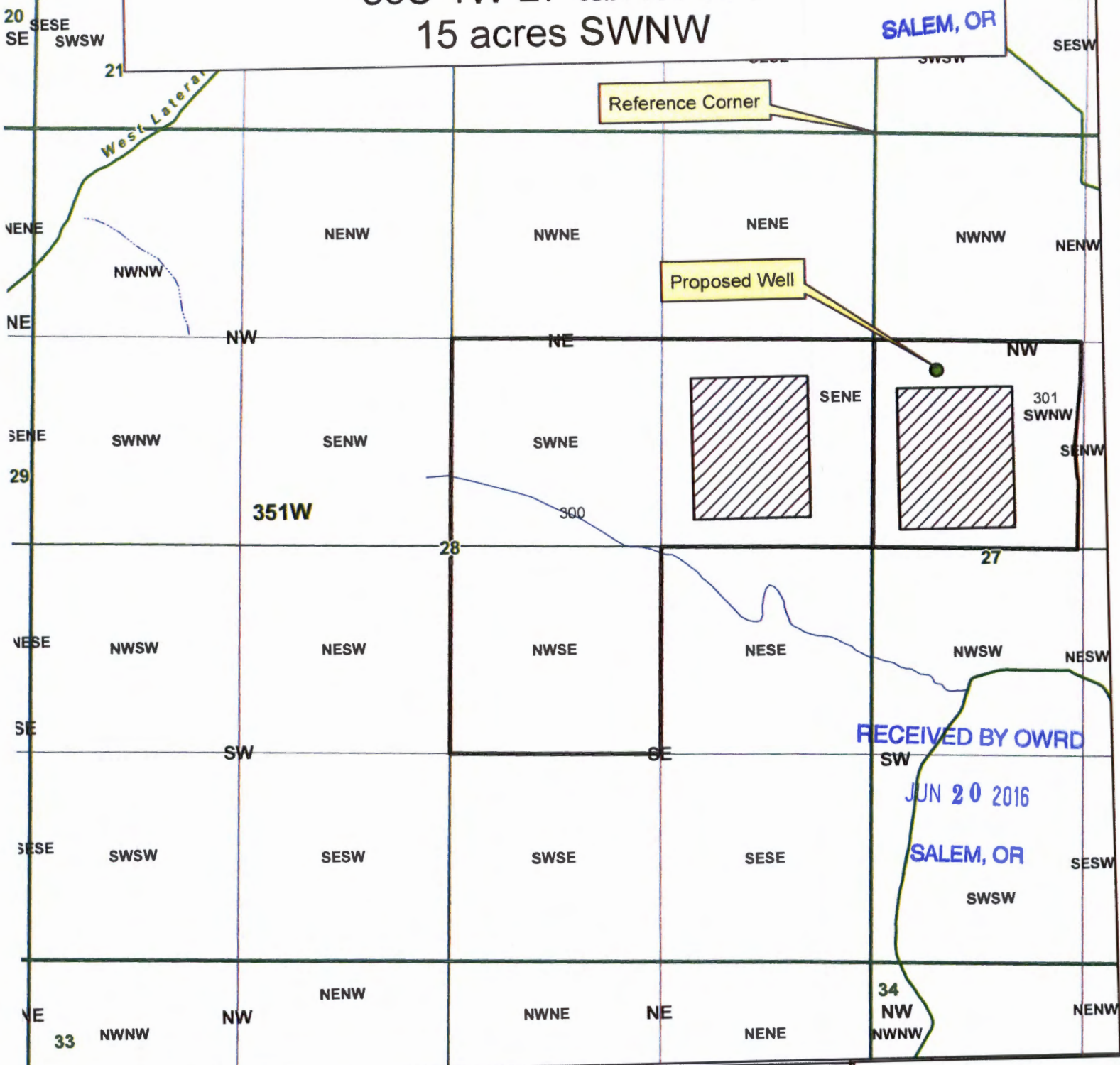
6-18347

Groundwater Application Map for Nursery Use in 35S-1W-28 -tax lot 300 15 acres SENE 35S-1W-27-tax lot 301 15 acres SWNW

RECEIVED BY OWRD

JUL 15 2019

SALEM, OR



RECEIVED BY OWRD

JUN 20 2016

SALEM, OR

Legend

- TL 300/301
- Proposed Well Location
- POU of Nursery
- Townships
- Sections
- Quarter Sections
- Quarter Quarter Sections

Proposed well is 1527 ft S
and 392 ft E from NW Corner Section 27



1 inch = 865 feet



JACKSON COUNTY
WATERMASTER

Prepared by Shavon Haynes

This map is based on a digital database compiled by Jackson County from a variety of sources. Jackson County cannot accept responsibility for errors, omissions, or positional accuracy. There are no warranties, expressed or implied.

Date: 05/25/2016; JAD's Map.mxd; haynes

G-18347