

Noah Levine Surface Water Application Map for the Use of 1.73 Acre/Feet of Stored Water in Squirrel Pond (Certificate # 86589)

Proposed Place of Use:
38S-2W-31-Tax Lot 200

- NE/SW: 40 Acres of Nursery and Irrigation
- SW/SW: 40 Acres of Nursery and Irrigation
- SE/SW: 40 Acres of Nursery and Irrigation
- 39S-2W-6-Tax Lot 1700
- NW/NW: 40 Acres of Nursery and Irrigation
- NE/NW: 40 Acres of Nursery and Irrigation

RECEIVED BY OWRD

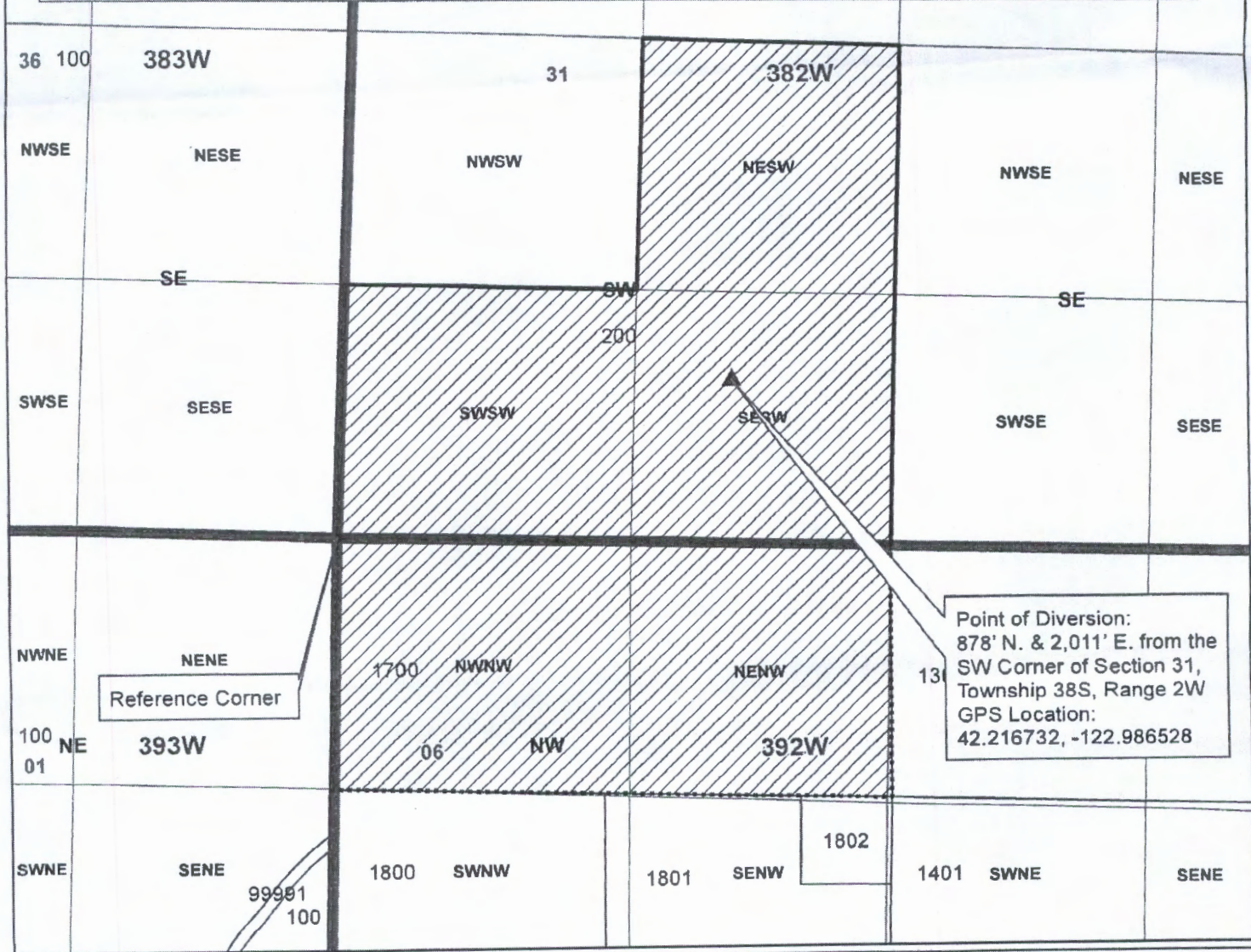
APR 18 2016

SALEM, OR

RECEIVED BY OWRD

JUL 12 2016

SALEM, OR

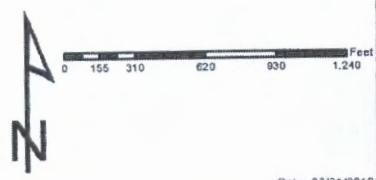


Point of Diversion:
878' N. & 2,011' E. from the
SW Corner of Section 31,
Township 38S, Range 2W
GPS Location:
42.216732, -122.986528

Legend

- ▲ Point of Diversion
- ▨ Place of Use
- ⋯ Taxlot 1700
- ▭ Taxlot 200
- ▭ Taxlots
- ▭ Townships
- ▭ Sections
- ▭ Quarter Sections
- ▭ Quarter Quarter Sections

1 inch = 800 feet



JACKSON COUNTY
WATERMASTER

Prepared by Travis Kelly

This map is based on a digital database compiled by Jackson County from a variety of sources. Jackson County cannot accept responsibility for errors, omissions, or positional accuracy. There are no warranties, expressed or implied.

Date: 03/21/2015 38-2W-31-Tax Lot 200 Noah Levine 4870 Sterling Cr. mzd, kelly

S-88260