

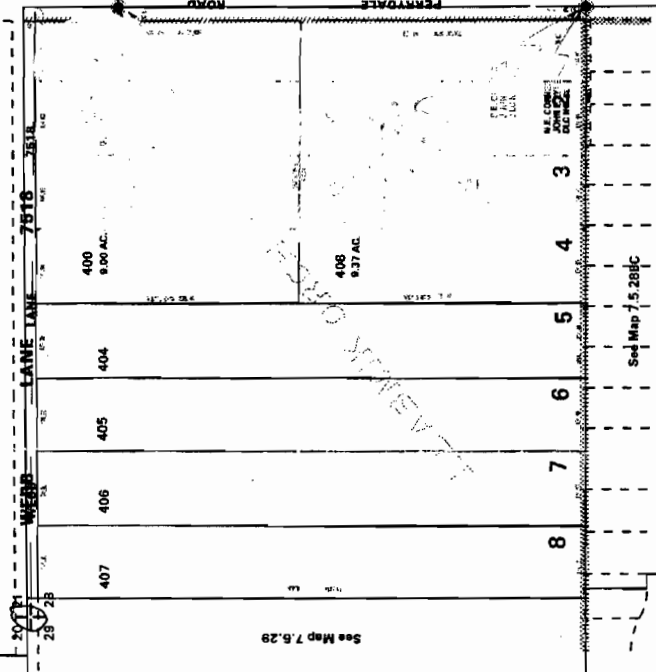
NW1/4 SEC.28 T7S R5W WM
 POLK COUNTY
 Scale 1" = 300'
 APPROX.

7.5.28B

RECEIVED
 JAN 29 2007
 WATER RESOURCES DEPT
 SALEM, OREGON

IMPORTANT
 This Map for Assessment
 and Taxation Purposes
ONLY

Cancelled No.
 100 2831
 101 2800
 102 2801
 103 2802
 104 3000
 105 3001
 106 3002
 107 3100
 200 3200
 201 3201
 300 3280
 401 3300
 402 3301
 403 3400
 500 3402
 501 3500
 600 3600
 700 3700
 800 3800



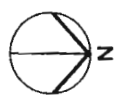
See Map 7.5.28BA

See Map 7.5.28

app no 5-86784

100105-86780

RECEIVED
OCT 10 2005
WATER RESOURCES DEPT
SALEM, OREGON



345.18'

S 89°40'45"E 659.51'
WEBB LANE 50' RW
314.32'

Center of the Structure is Located
~11,831' east and ~21,537' South of
the NE Corner of Township 7S and
Range 5W.

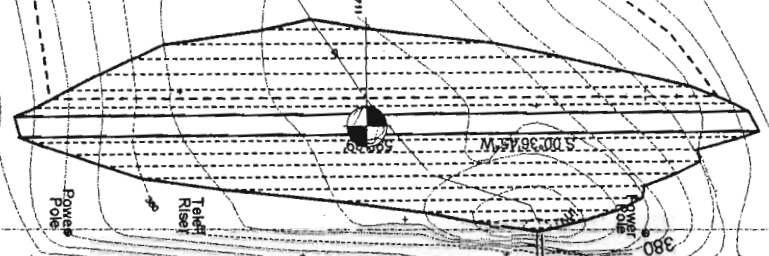
N 00°13'07"W 598.40'

S 89°40'45"E 650.83'

CREEK

44°-56'-26"
123°-18'-37"

NW 1/4, NW 1/4



EDGE OF PAVEMENT

391.6
394.7
392.7
60' RW
383.0
PERRYDALE ROAD
389.7

1st Conc
Culvert



RECEIVED
JAN 29 2007
WATER RESOURCES DEPT
SALEM, OREGON

100105-86780