

This map was prepared for assessment purpose only.

SECTION 9 T.4S. R.3E.W.M.

CLACKAMAS COUNTY

4 3E 9

RECEIVED BY OWRD

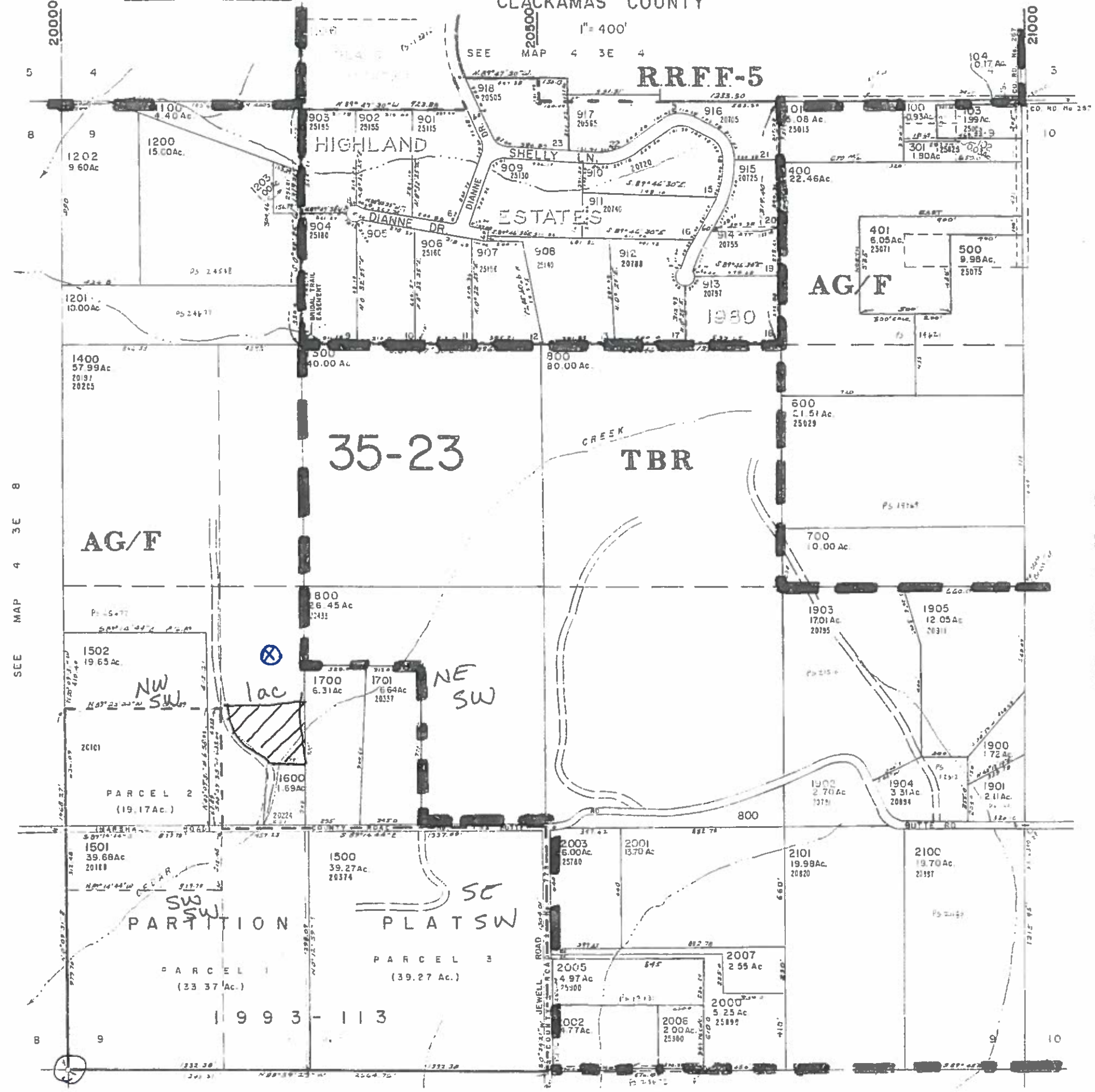
AUG 05 2016

SALEM, OR



11 ADG
301 25623

CANCELLED
900 25000
1000
2004
200
300
105



1" = 600'

2280' N &
1140' E
FROM SW CORNER
OF SECTION 9

25500

26000

SEE MAP 4 3E 8

SEE MAP 4 3E 10

1" = 400'
SEE MAP 4 3E 4

RRFF-5

AG/F

35-23

TBR

AG/F

NW SW

NE SW

SW SW PARTITION

SE PLAT SW

PARCEL 1 (33.37 Ac.)

PARCEL 3 (39.27 Ac.)

1993-113