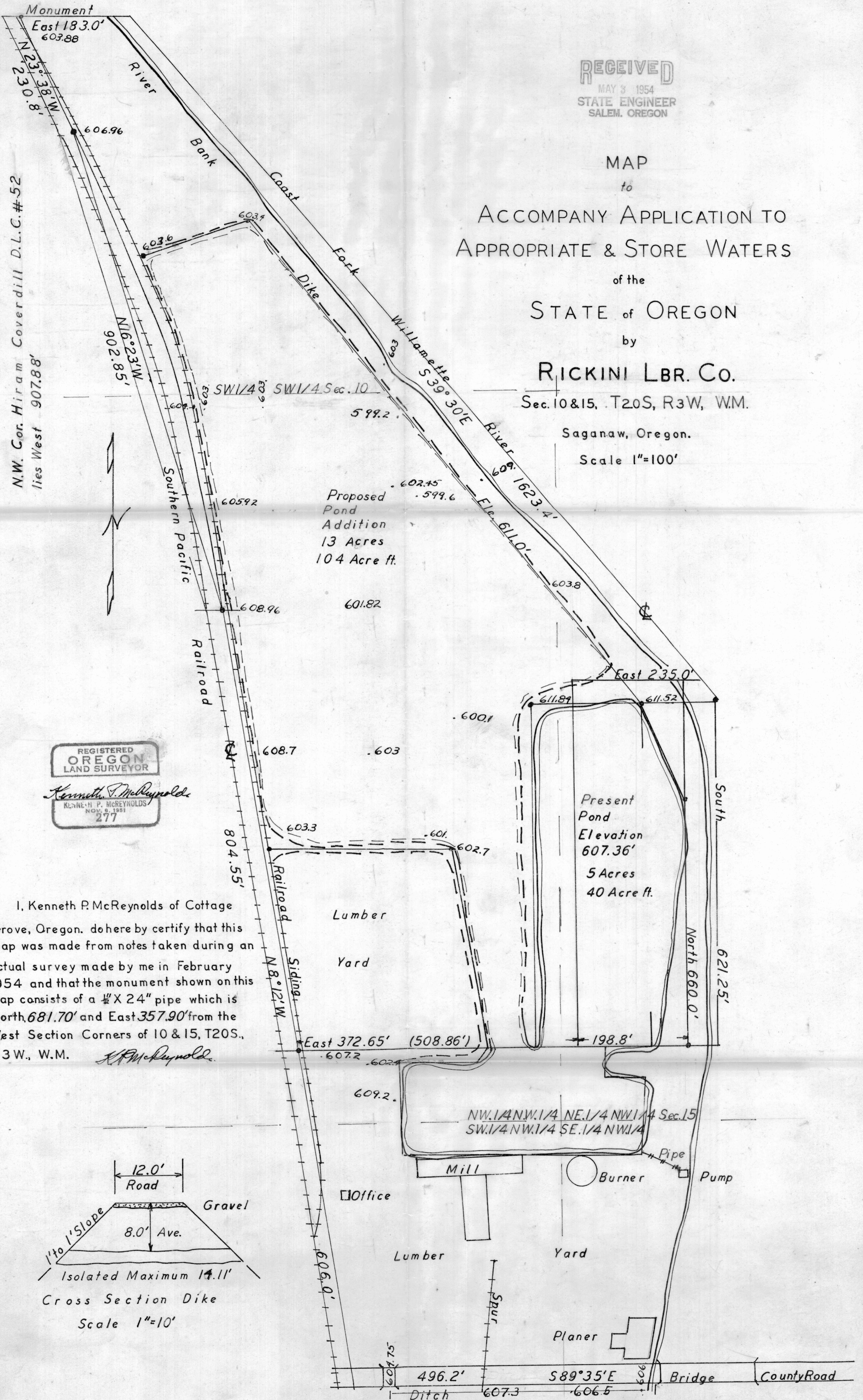


RECEIVED  
MAY 3 1954  
STATE ENGINEER  
SALEM, OREGON

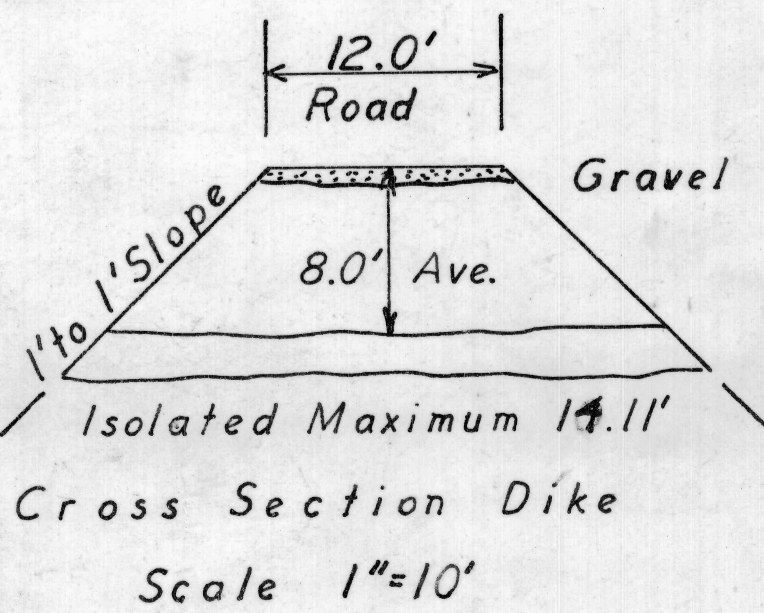
MAP  
to  
ACCOMPANY APPLICATION TO  
APPROPRIATE & STORE WATERS  
of the  
STATE of OREGON  
by  
RICKINI LBR. CO.  
Sec. 10 & 15, T20S, R3W, WM.  
Saganaw, Oregon.  
Scale 1"=100'

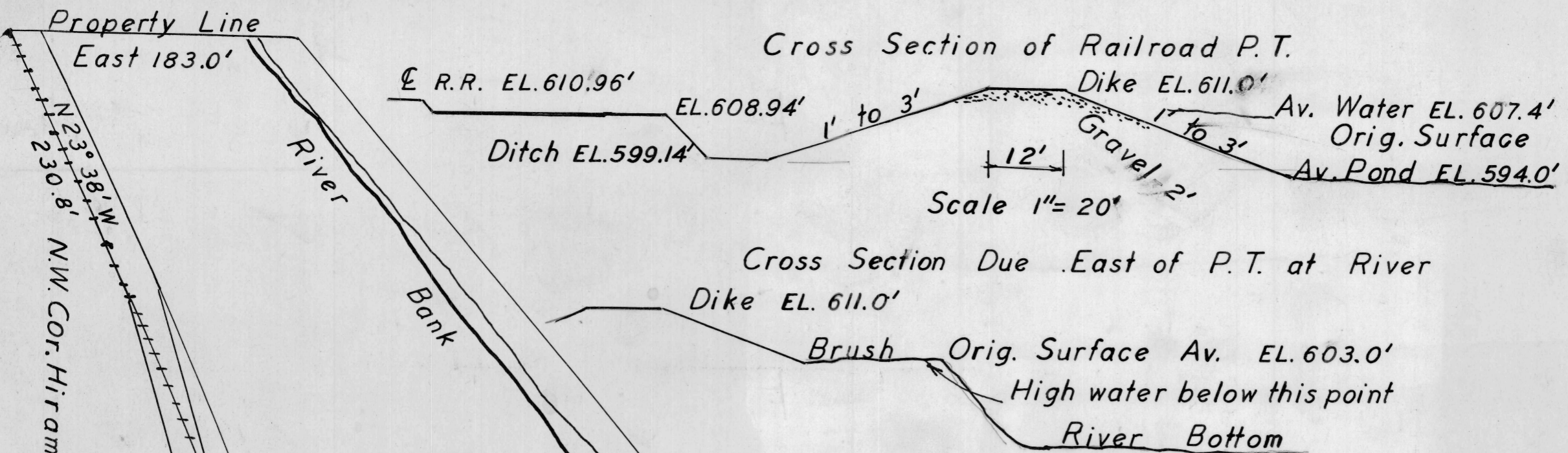


N.W. Cor. Hiram Coverdill D.L.C.#52  
lies West 907.88'

REGISTERED  
OREGON  
LAND SURVEYOR  
Kenneth P. McReynolds  
KENNETH P. McREYNOLDS  
NOV. 9, 1951  
277

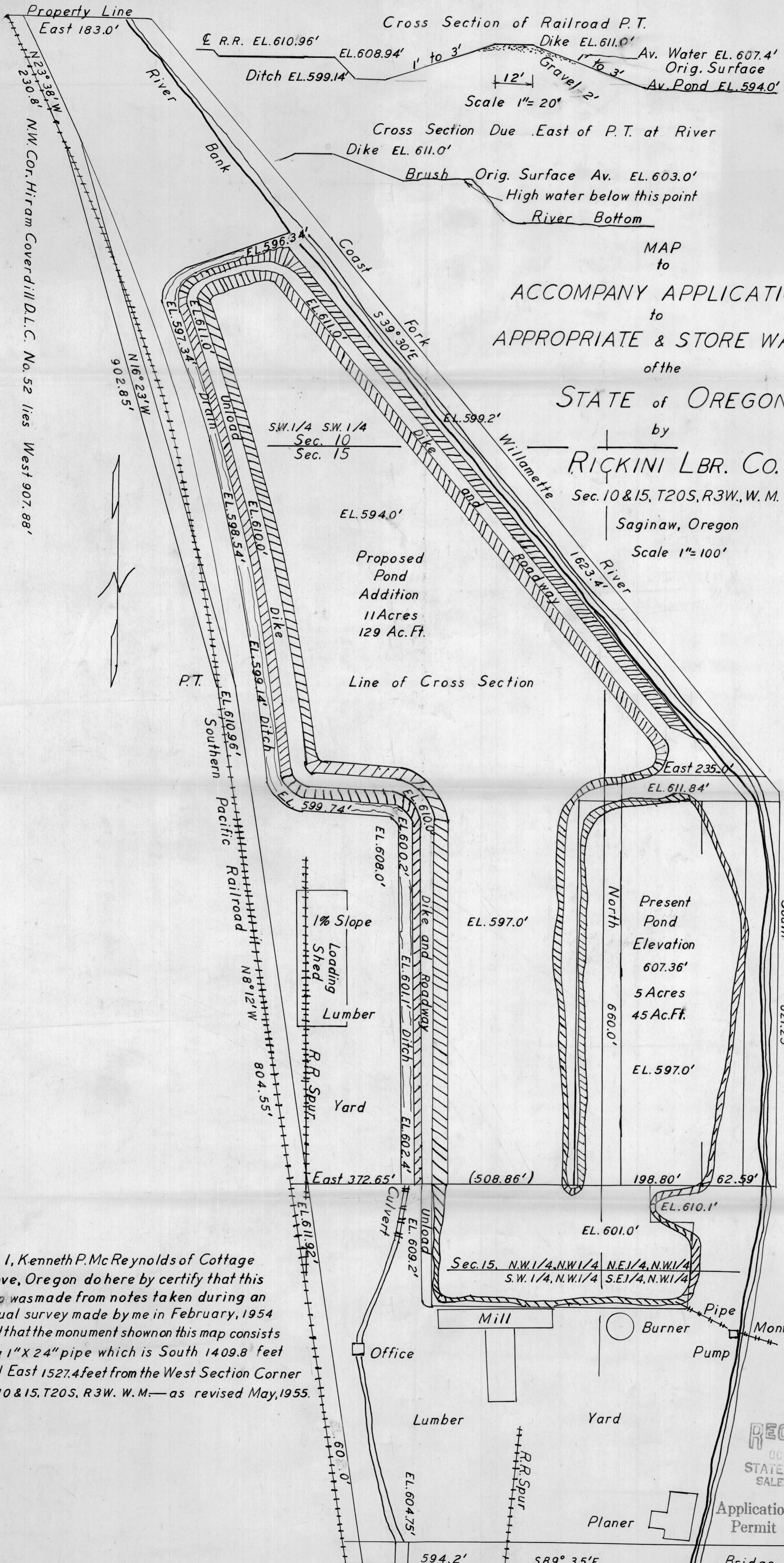
I, Kenneth P. McReynolds of Cottage Grove, Oregon, do hereby certify that this map was made from notes taken during an actual survey made by me in February 1954 and that the monument shown on this map consists of a 1/2" X 24" pipe which is North 681.70' and East 357.90' from the West Section Corners of 10 & 15, T20S., R3W., W.M.





MAP  
to  
ACCOMPANY APPLICATION  
to  
APPROPRIATE & STORE WATER  
of the  
STATE of OREGON  
by

**RICKINI LBR. CO.**  
Sec. 10 & 15, T20S, R3W, W.M.  
Saginaw, Oregon  
Scale 1" = 100'



I, Kenneth P. McReynolds of Cottage Grove, Oregon do here by certify that this map was made from notes taken during an actual survey made by me in February, 1954 and that the monument shown on this map consists of a 1" x 24" pipe which is South 1409.8 feet and East 1527.4 feet from the West Section Corner of 10 & 15, T20S, R3W, W.M.—as revised May, 1955.

**RECEIVED**  
OCT 8 1957  
STATE ENGINEER  
SALEM, OREGON  
Application No. R-29827  
Permit No. R-2077  
# 25135

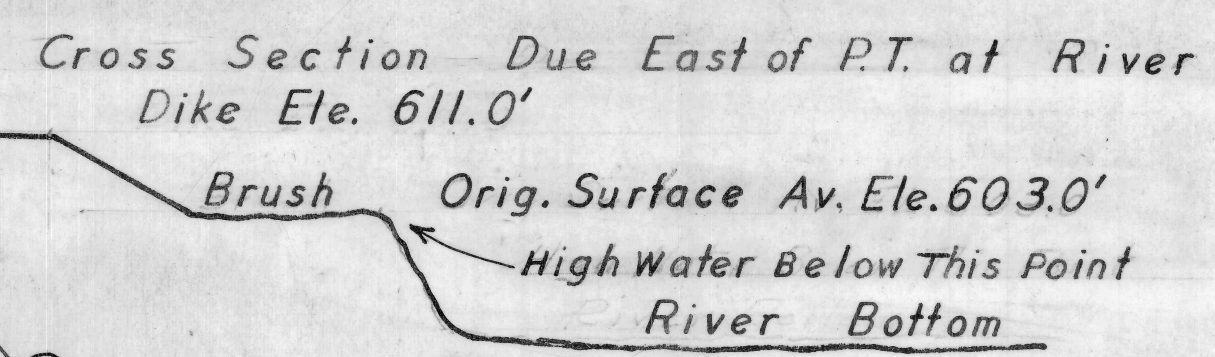
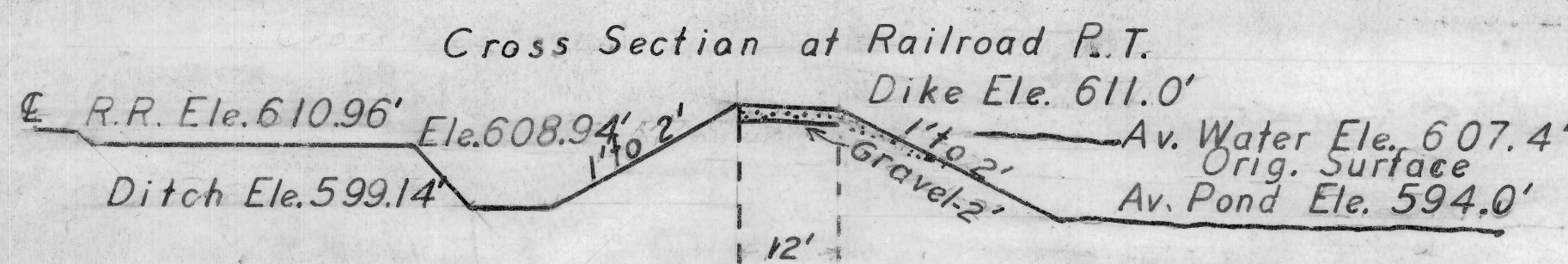
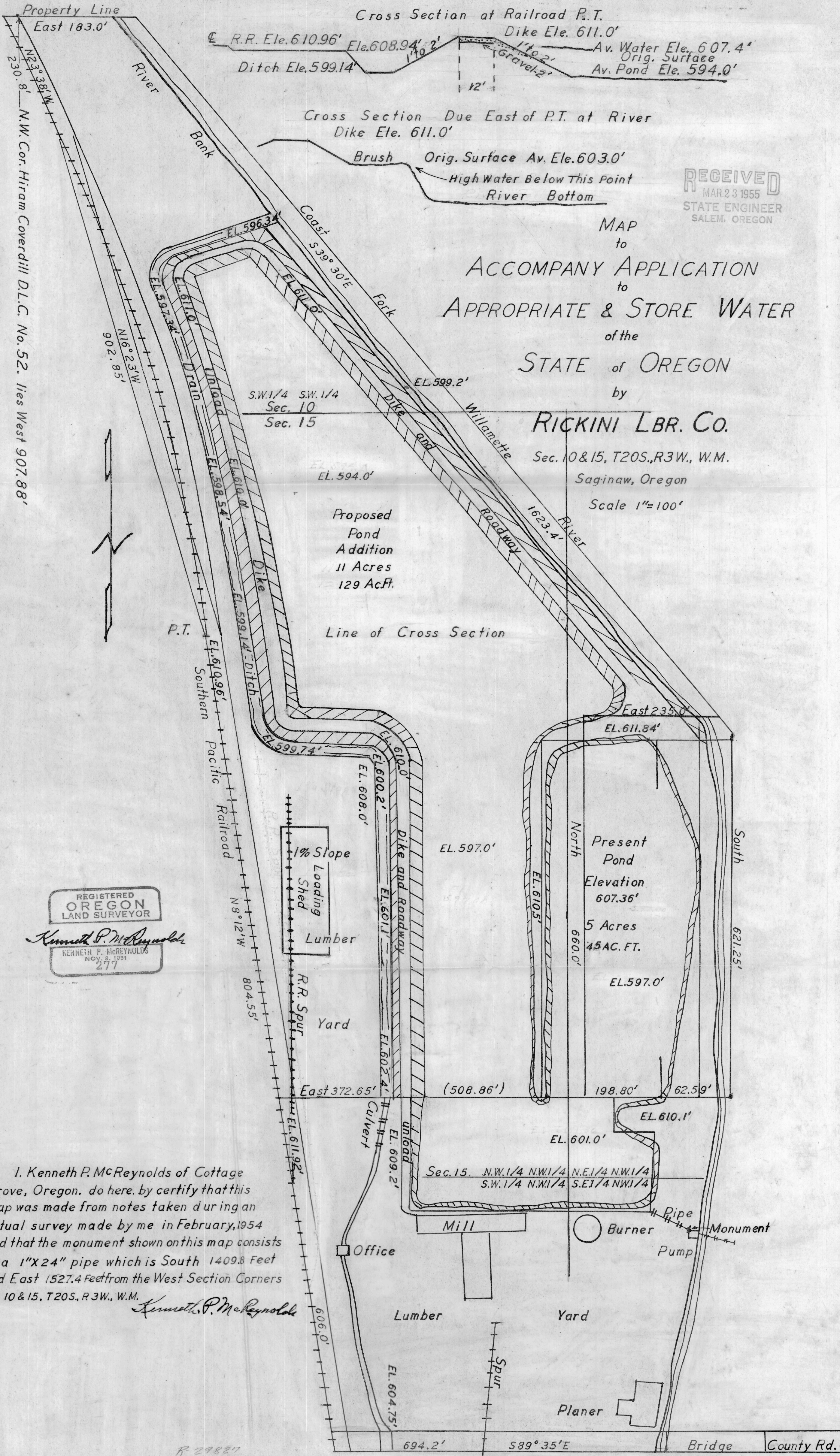
RECEIVED  
 MAR 23 1955  
 STATE ENGINEER  
 SALEM, OREGON

MAP  
 to  
 ACCOMPANY APPLICATION  
 to  
 APPROPRIATE & STORE WATER  
 of the  
 STATE of OREGON  
 by

**RICKINI LBR. CO.**

Sec. 10 & 15, T20S., R3W., W.M.  
 Saginaw, Oregon

Scale 1"=100'



Proposed  
 Pond  
 Addition  
 11 Acres  
 129 Ac.Ft.

Present  
 Pond  
 Elevation  
 607.36'  
 5 Acres  
 45 AC. FT.

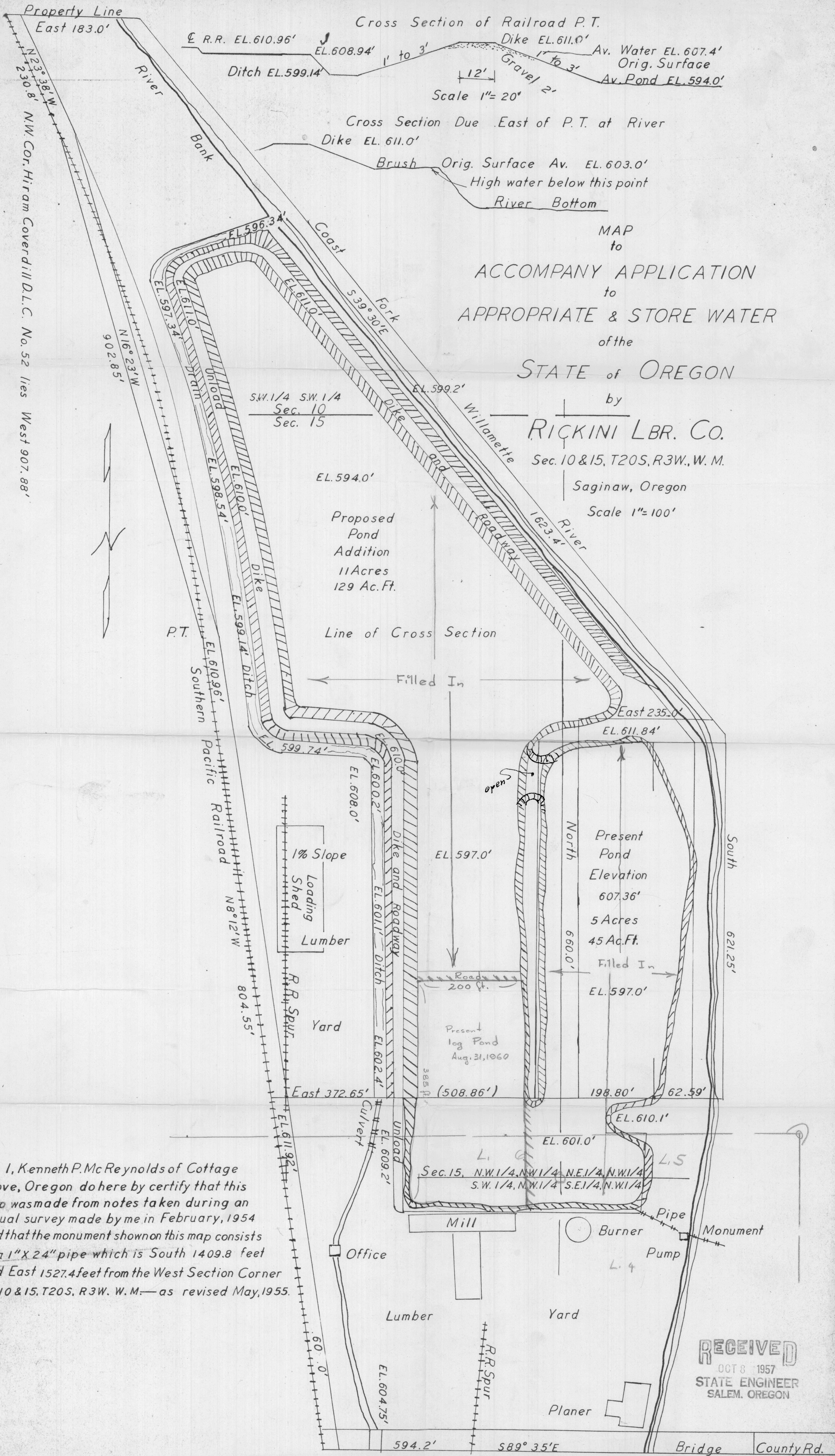
REGISTERED  
 OREGON  
 LAND SURVEYOR

*Kenneth P. McReynolds*  
 KENNETH P. McREYNOLDS  
 NOV. 9, 1951  
 277

I, Kenneth P. McReynolds of Cottage Grove, Oregon, do hereby certify that this map was made from notes taken during an actual survey made by me in February, 1954 and that the monument shown on this map consists of a 1"X24" pipe which is South 1409.8 Feet and East 1527.4 Feet from the West Section Corners of 10 & 15, T20S., R3W., W.M.

*Kenneth P. McReynolds*

R 29827  
 29728



I, Kenneth P. McReynolds of Cottage Grove, Oregon do hereby certify that this map was made from notes taken during an actual survey made by me in February, 1954 and that the monument shown on this map consists of a 1" X 24" pipe which is South 1409.8 feet and East 1527.4 feet from the West Section Corner of 10 & 15, T20S, R3W, W.M.— as revised May, 1955.

**RECEIVED**  
 OCT 8 1957  
 STATE ENGINEER  
 SALEM, OREGON