

ITEM #4 77

MAP FOR Water Right Applications S2 & S3, T15S, R3W, LINN COUNTY Storage and Surface Water



1 IN = 1320 FT
0 660 1320

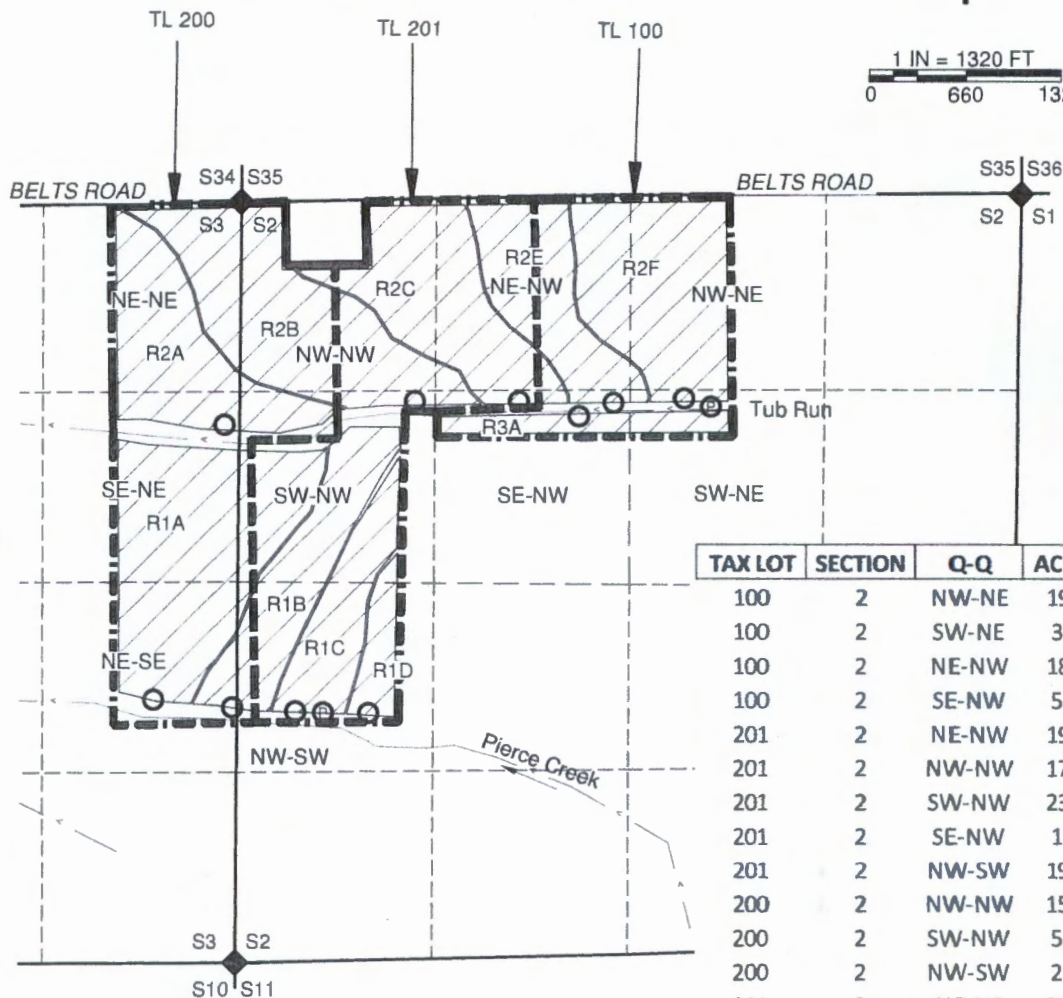
POINT OF DIVERSION TABLE,
LISTED FROM WEST TO EAST

FEET FROM NW S2
SOUTH EAST
(NEGATIVE = WEST)

| | |
|------|------|
| 3430 | -595 |
| 1535 | -115 |
| 3480 | -55 |
| 3510 | 380 |
| 3510 | 565 |
| 3520 | 875 |
| 60 | 1190 |
| 1370 | 1900 |
| 1475 | 2315 |
| 1380 | 2555 |
| 1350 | 2975 |
| 1395 | 3225 |

PUMP

PUMP



| TAX LOT | SECTION | Q-Q | ACRES |
|---------|---------|-------|-------|
| 100 | 2 | NW-NE | 19.6 |
| 100 | 2 | SW-NE | 3.5 |
| 100 | 2 | NE-NW | 18.7 |
| 100 | 2 | SE-NW | 5.1 |
| 201 | 2 | NE-NW | 19.7 |
| 201 | 2 | NW-NW | 17.5 |
| 201 | 2 | SW-NW | 23.0 |
| 201 | 2 | SE-NW | 1.5 |
| 201 | 2 | NW-SW | 19.4 |
| 200 | 2 | NW-NW | 15.2 |
| 200 | 2 | SW-NW | 5.7 |
| 200 | 2 | NW-SW | 2.2 |
| 200 | 3 | NE-NE | 24.2 |
| 200 | 3 | SE-NE | 21.9 |
| 200 | 3 | NE-SE | 15.1 |

Total hatch = 212.2

Total area, all three tax lots = 241.7

NOTES:

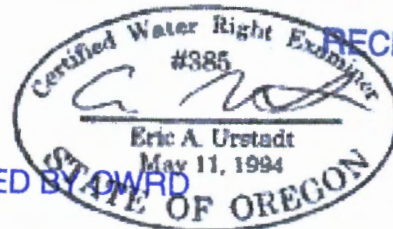
THIS MAP IS NOT INTENDED TO PROVIDE LEGAL DIMENSIONS OR LOCATIONS OF PROPERTY OWNERSHIP LINES.

-PROPERTY LINES AND QUARTER-QUARTER LINES ARE BASED ON BOTH OCCUPATION LINES FROM AN AERIAL PHOTO AND THE TAX ASSESSOR MAP FOR SECTION 2, T15S, R3W, AND THESE LINES DO NOT MATCH WELL. ALSO, MY RESEARCH INDICATES THAT PROPERTY LINES HAVE NOT BEEN SURVEYED IN RECENT HISTORY. THEREFORE, THE PROPERTY LINES SHOWN AND QUARTER-QUARTER AREAS WILL VARY FROM AN ACCURATE SURVEY.

-WATER CONVEYANCE LINES SHALL BE ALL WITHIN THE PROPERTY AND THEREFORE ARE NOT SHOWN.

LEGEND

- DONATION LAND CLAIM (DLC) CORNER
- STREAM OR SURFACE DRAINAGE
- SECTION OR QUARTER CORNER
- POINT OF DIVERSION (BLANK=DAM & P=PUMP STATION)
- TAX LOT LINE
- SECTION LINE
- QUARTER-QUARTER LINE
- DLC LINES (NOT SHOWN)
- RESERVOIRS (NAMED "R##")
- Q-Q QUARTER-QUARTER OF A SECTION



RECEIVED BY OWRD

AUG 25 2016

SALEM, OR

RECEIVED BY OWRD

SEP 09 2016

SALEM, OR

MAP BY:
ASPEN RURAL LAND CONSULTING
ERIC URSTADT, PE, PLS
971-250-1520
Aug 2016
Rogers1D