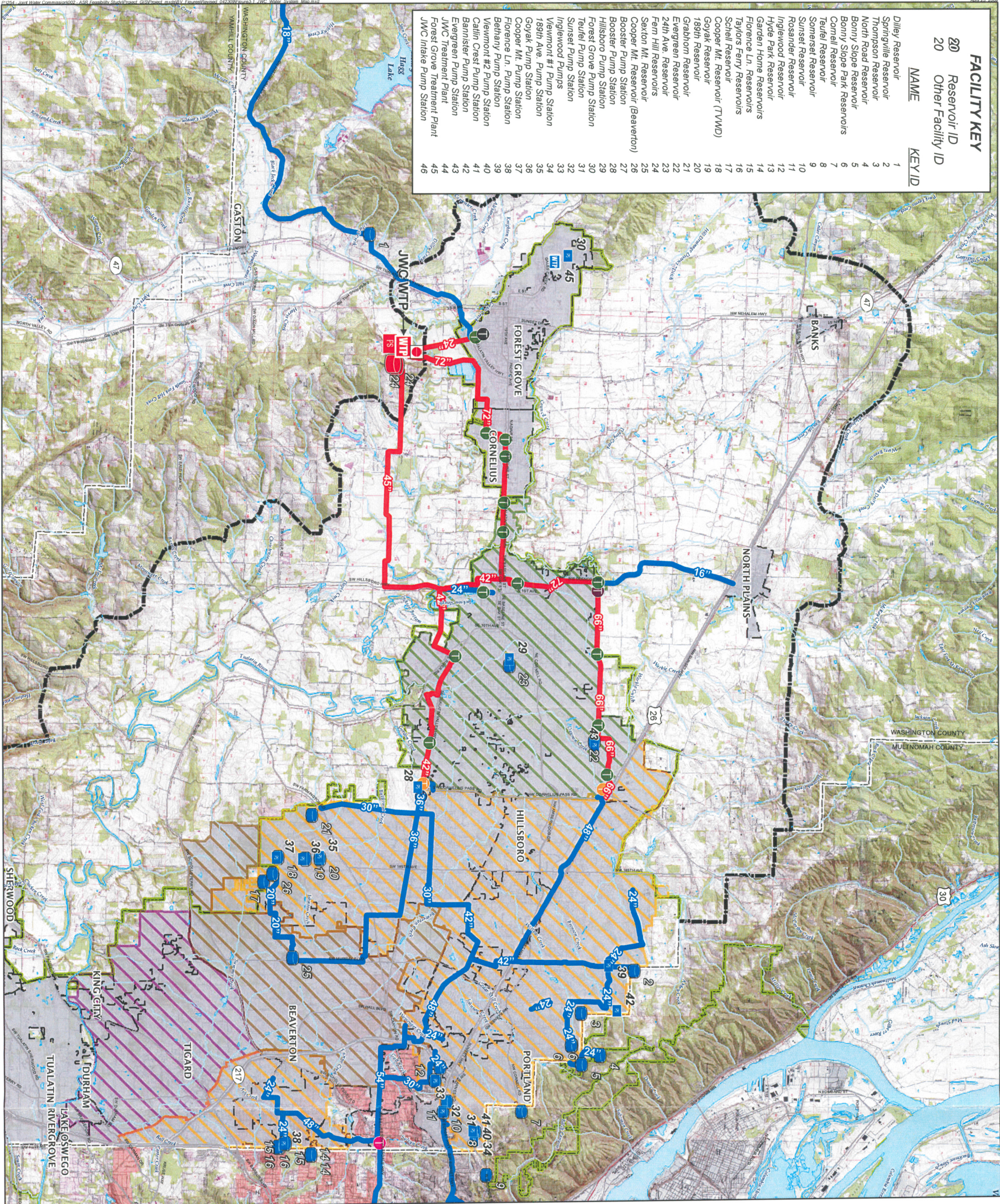


| FACILITY KEY | Reservoir ID | Other Facility ID |
|----------------------------------|--------------|-------------------|
| 1 | 20 | |
| 2 | | 20 |
| NAME | KEY ID | |
| Dilley Reservoir | 1 | |
| Springville Reservoir | 2 | |
| Thompson Reservoir | 3 | |
| North Road Reservoir | 4 | |
| Bonny Slope Reservoir | 5 | |
| Bonny Slope Park Reservoirs | 6 | |
| Cornell Reservoir | 7 | |
| Teufel Reservoir | 8 | |
| Somerset Reservoir | 9 | |
| Sunset Reservoir | 10 | |
| Rosander Reservoir | 11 | |
| Inglewood Reservoir | 12 | |
| Hyde Park Reservoir | 13 | |
| Garden Home Reservoirs | 14 | |
| Florence Ln. Reservoirs | 15 | |
| Taylor's Ferry Reservoirs | 16 | |
| Schell Reservoir | 17 | |
| Cooper Mt. Reservoir (TWWD) | 18 | |
| Goyak Reservoir | 19 | |
| 188th Reservoir | 20 | |
| Grabhorn Reservoir | 21 | |
| Evergreen Reservoir | 22 | |
| 24th Ave. Reservoir | 23 | |
| Fern Hill Reservoirs | 24 | |
| Sexton Mt. Reservoir | 25 | |
| Cooper Mt. Reservoir (Beaverton) | 26 | |
| Booster Pump Station | 27 | |
| Booster Pump Station | 28 | |
| Hillsboro Pump Station | 29 | |
| Forest Grove Pump Station | 30 | |
| Teufel Pump Station | 31 | |
| Sunset Pump Station | 32 | |
| Inglewood Pumps | 33 | |
| Viewmont #1 Pump Station | 34 | |
| 189th Ave. Pump Station | 35 | |
| Goyak Pump Station | 36 | |
| Cooper Mt. Pump Station | 37 | |
| Florence Ln. Pump Station | 38 | |
| Behanby Pump Station | 39 | |
| Viewmont #2 Pump Station | 40 | |
| Callin Crest Pump Station | 41 | |
| Bannister Pump Station | 42 | |
| Evergreen Pump Station | 43 | |
| JWC Treatment Plant | 44 | |
| Forest Grove Treatment Plant | 45 | |
| JWC Intake Pump Station | 46 | |



LEGEND

FACILITIES

- JWC Intake
- JWC Pump Station
- JWC-Member Pump Station
- JWC Reservoir
- JWC-Member Reservoir
- JWC-Member Reservoir
- JWC-Member Treatment Plant
- JWC-Member Treatment Plant
- Beaverton Turnout
- Forest Grove Turnout
- Hillsboro Turnout
- North Plains Turnout
- TWWD - Portland Water Bureau Turnout
- TWWD Turnout

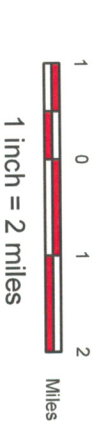
PIPES

- JWC Transmission Main
- JWC-Member Distribution Main

BASEMAP

- Freeway
- Major Arterial
- Waterbody
- River
- Tualatin Valley Water District
- City of Hillsboro Service Area
- City of Beaverton Service Area
- Tigard Water Service Area
- Cities
- Incorporated Area
- County Boundary
- Urban Growth Boundary
- Potential Urban Reserves

Project No.: 161658
 Sources: Joint Water Commission (JWC)
 City of Hillsboro
 Tualatin Valley Water District (TWWD)
 Washington County
 Metro Data Resource Center



BLACK & VEATCH
 building a world of difference™

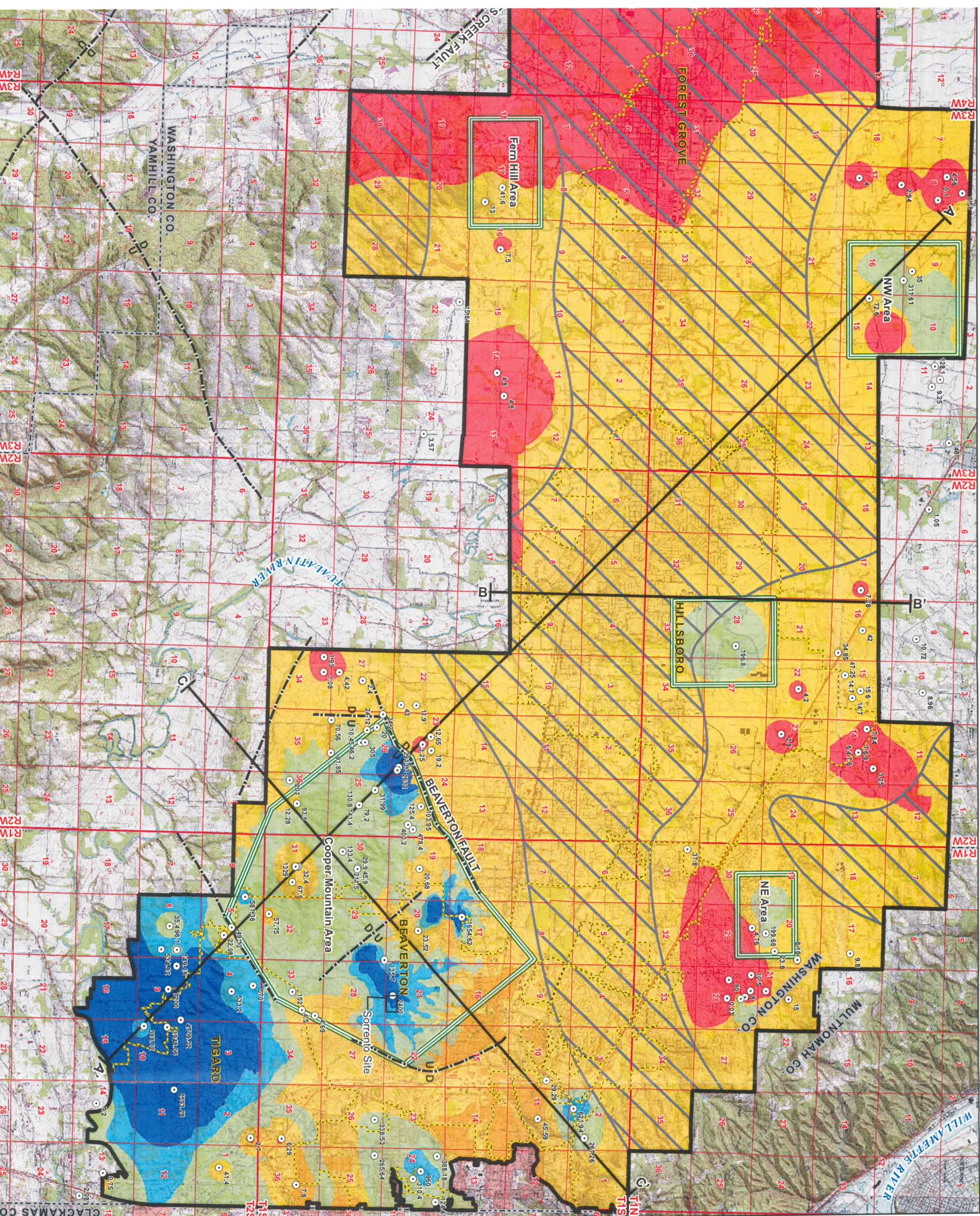


RECEIVED
 DEC 24 2009

JWC WATER SYSTEM MAP

FIGURE 6-1
ASR Potential
 (Specific Capacity X Depth to Water Table)

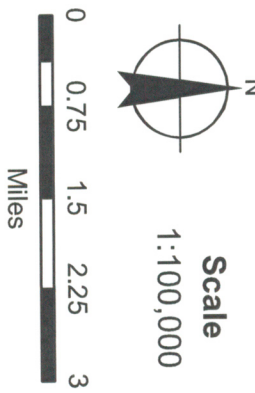
Joint Water Commission
 Capital Improvement Master Plan



- LEGEND**
- ASR Potential
 - > 1000
 - 500 - 1000
 - 100 - 500
 - 10 - 100
 - 0 - 10
 - Hatching Indicates Areas of Spa Data; Therefore, Estimates of A Potential Exhibit Higher Uncertainty
 - Wells Used for Analysis
 - Major Faults
 - Cross Sections
 - ASR Study Area
 - Target Areas for ASR Development
 - Cities
 - Counties

NOTES:

- 1) Well locations are accurate to the nearest quarter section, or quarter quarter section, depending on available information from OWRD.
- 2) Wells shown were completed in Basalt.



MAP NOTES:

Projection: Oregon State Plane North Zone
 Datum: North American Datum of 1983
 Date: February 19, 2009
 Data Sources: Oregon Geospatial Data Clearinghouse, METRO, USGS, ESRI

GSI **BLACK & VEAT**
 Building a world of differ
 WATER SOLUTIONS, INC.

RECEIVED

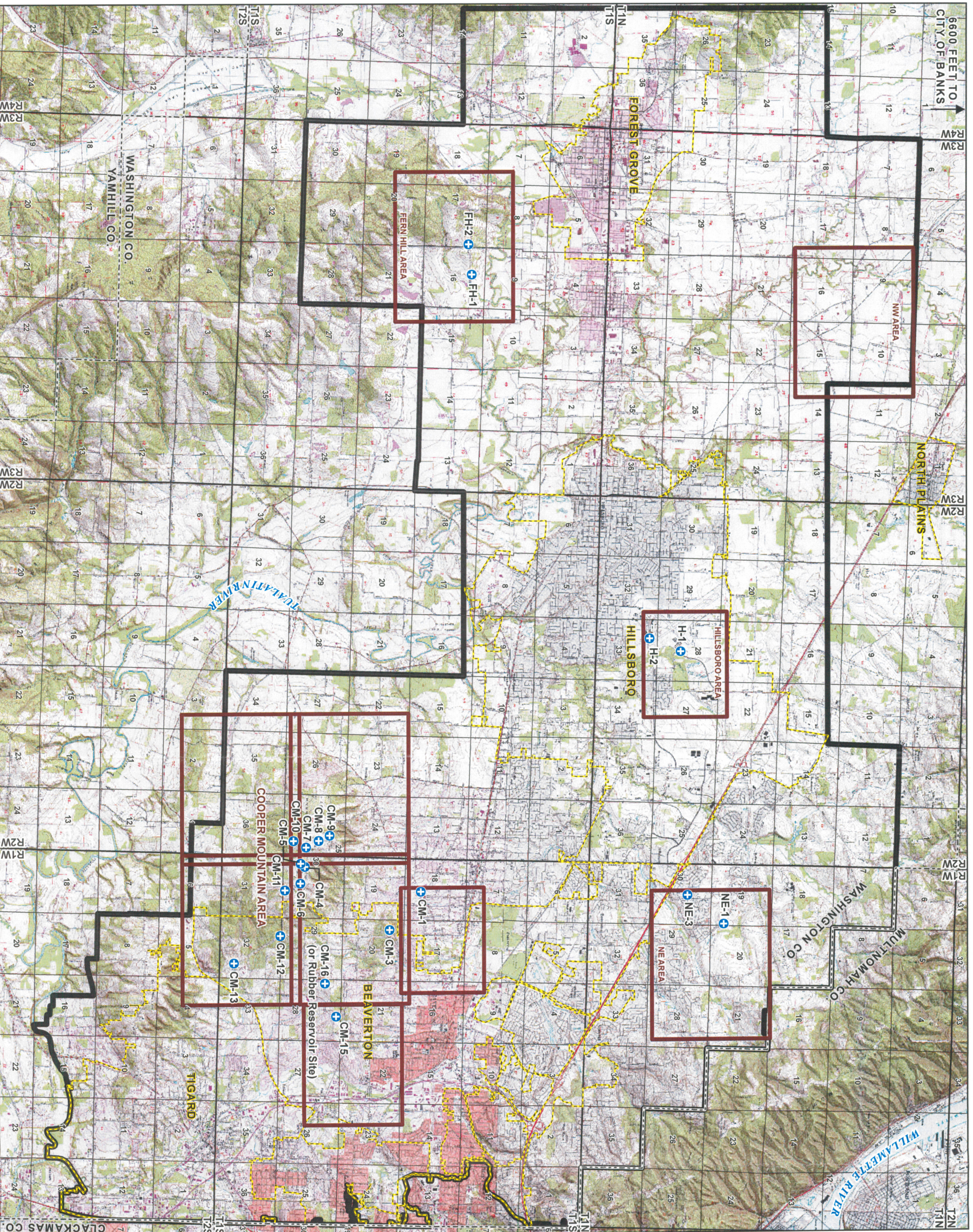
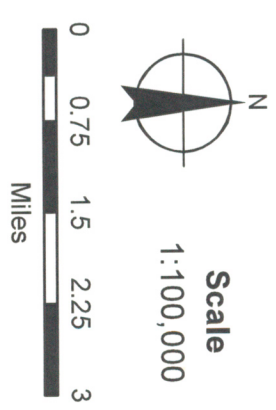


FIGURE 6-2
ASR Well Locations
 Joint Water Commission
 Capital Improvement Master Plan

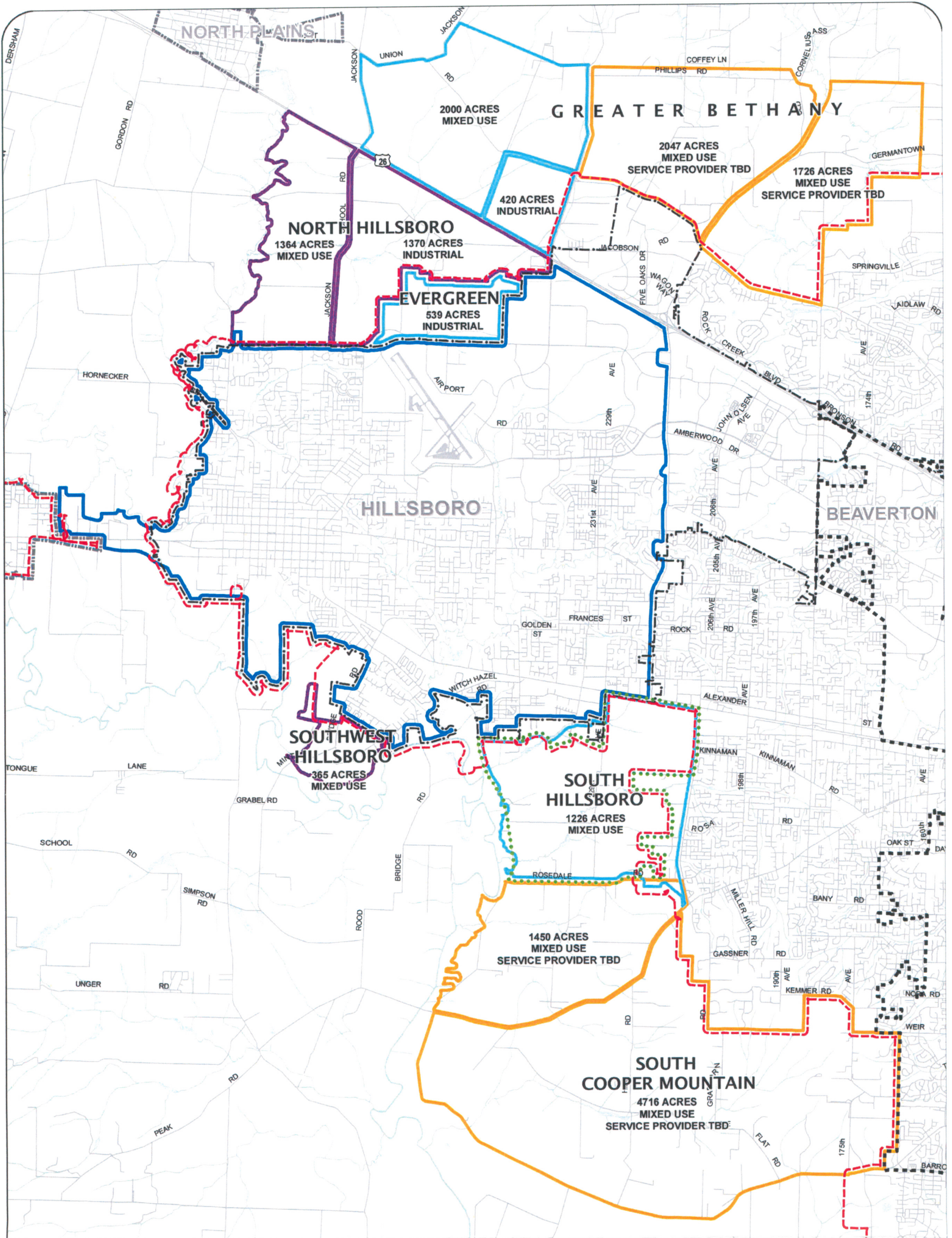
- LEGEND**
- ⊕ ASR Well
 - ▭ ASR Study Area
 - ▭ Focused Areas for ASR Development (Figures 4 to 13)
 - ▭ Cities
 - ▭ Counties

RECEIVED
 DEC 24 2009
 WATER RESOURCES DEPT
 SALEM, OREGON



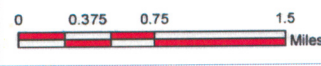
MAP NOTES:
 Projection: Oregon State Plane North Zone
 Datum: North American Datum of 1983
 Date: February 26, 2009
 Data Sources: Oregon Geospatial Data Clearinghouse, METRO RLIS, USGS, ESRI





MAP NOTES TO USERS

Map Scale: 1:60,000
Created By: Steve Kincade
 Black & Veatch
 November 2008
Date: November 2008
Altered By: Kristel Fesler
 City of Hillsboro
 June 2009
Date: June 2009
Sources: City of Hillsboro
 Washington County
 Metro Data Resource Center
Notes: Urban Reserve Areas are defined by Metro Regional Government.



Legend

- Base Features**
- Urban Growth Boundary
 - Hillsboro City Limits
 - Beaverton City Limits
 - Other City Limits
 - City of Hillsboro Water Service Area
 - Streets
 - Rivers
 - Waterbodies

Potential Urban Reserves

- Current Urban Reserve Area
- Areas included in Hillsboro's Demand Projections
- Areas to be included in subsequent Demand Projections
- Water Service Provider To Be Determined

DISCLAIMER
 This product is for informational purposes and may not have been prepared for, or be suitable for legal, engineering, or surveying purposes. Users of this information should review or consult the primary data and information sources to ascertain the usability of the information.



**JOINT WATER COMMISSION
 WATER MANAGEMENT AND
 CONSERVATION PLAN**

**POTENTIAL
 URBAN
 RESERVES
 MAP (2008)**

RECEIVED
 DEC 24 2009
 WATER RESOURCES DEPT
 SEASIDE, OREGON