

T. 22 S.

R. 12 W.

SEC. 12

2

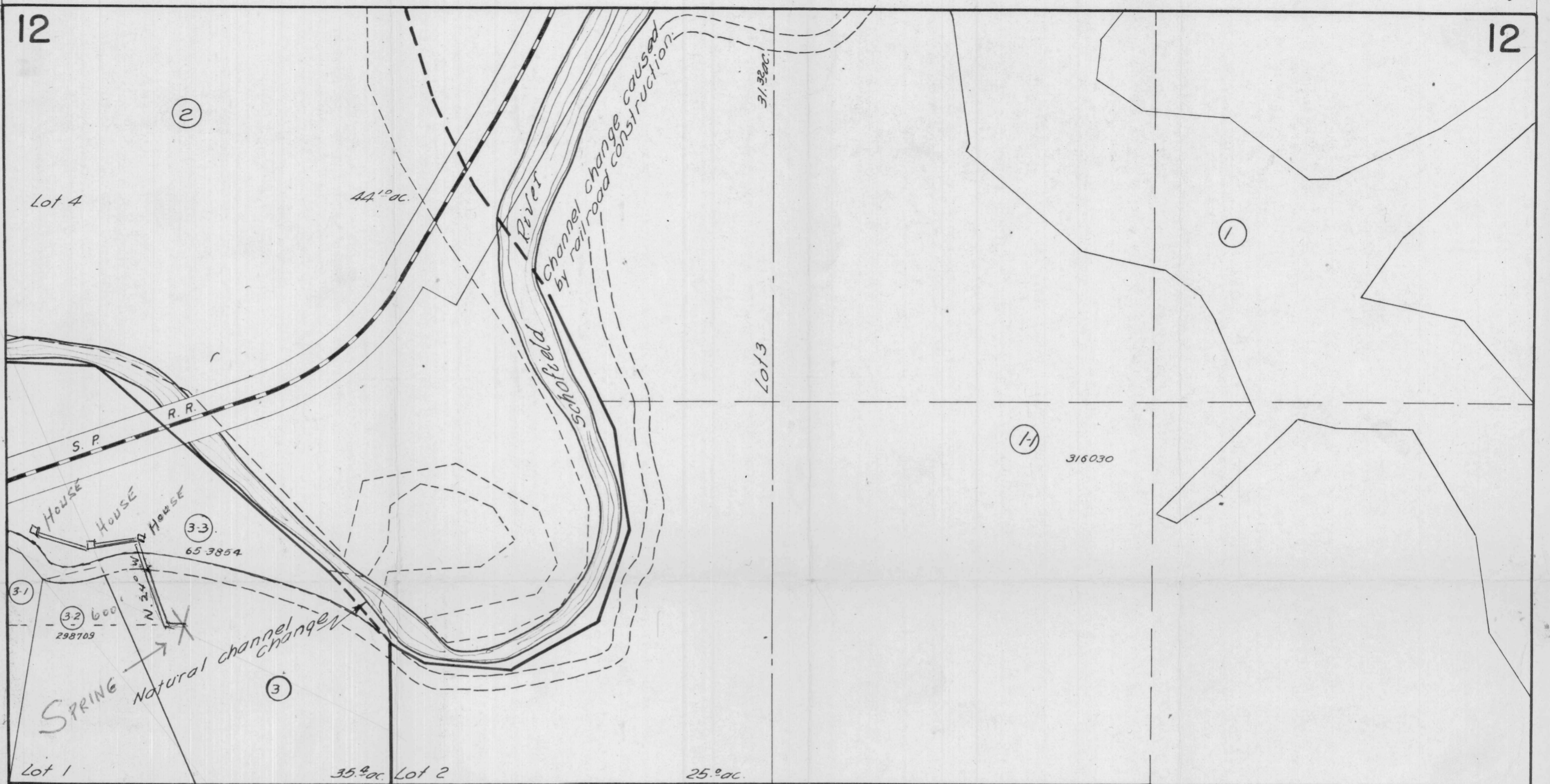
1

1

11

12

12



Demits

RECEIVED
 NOV 15 1965
 STATE ENGINEER
 SALEM OREGON

RECEIVED
 APR 13 1966
 STATE ENGINEER
 SALEM OREGON

Application No. 41613
 Permit No.

11 12

14 13

12

13