

T. 32 S. R. 2 E. W.M.

1" = 2000'

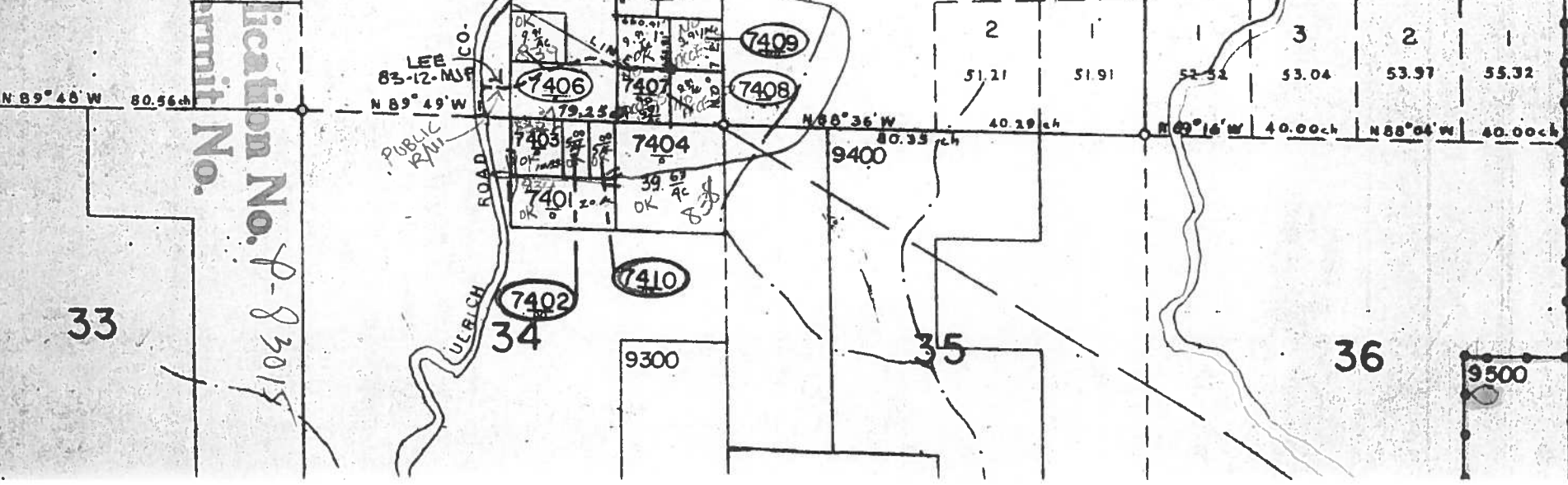
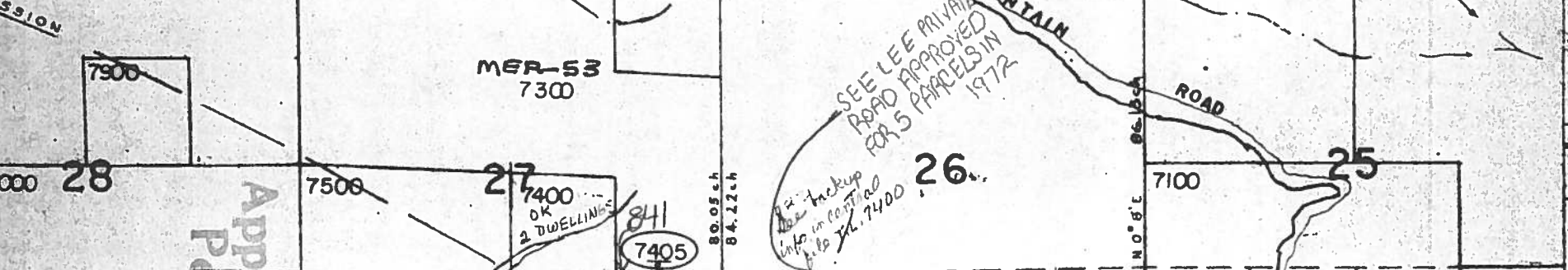
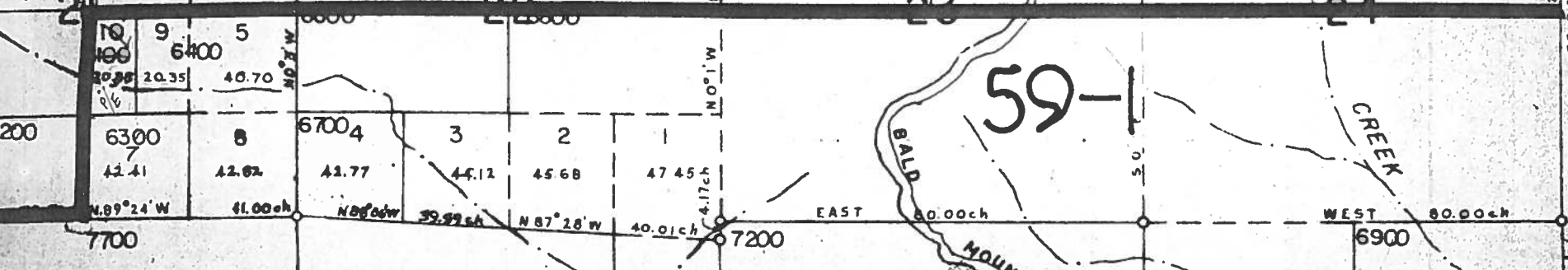
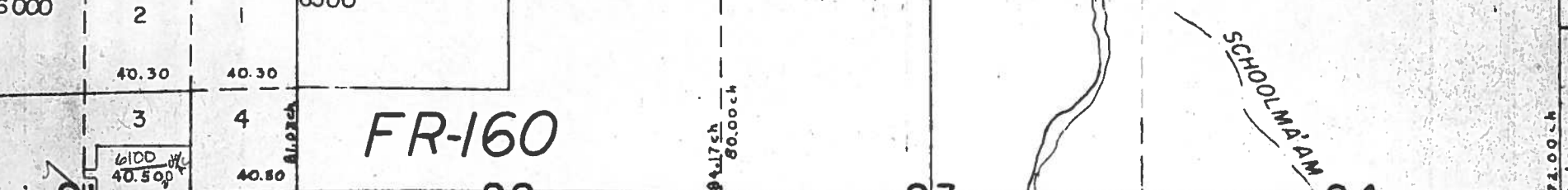
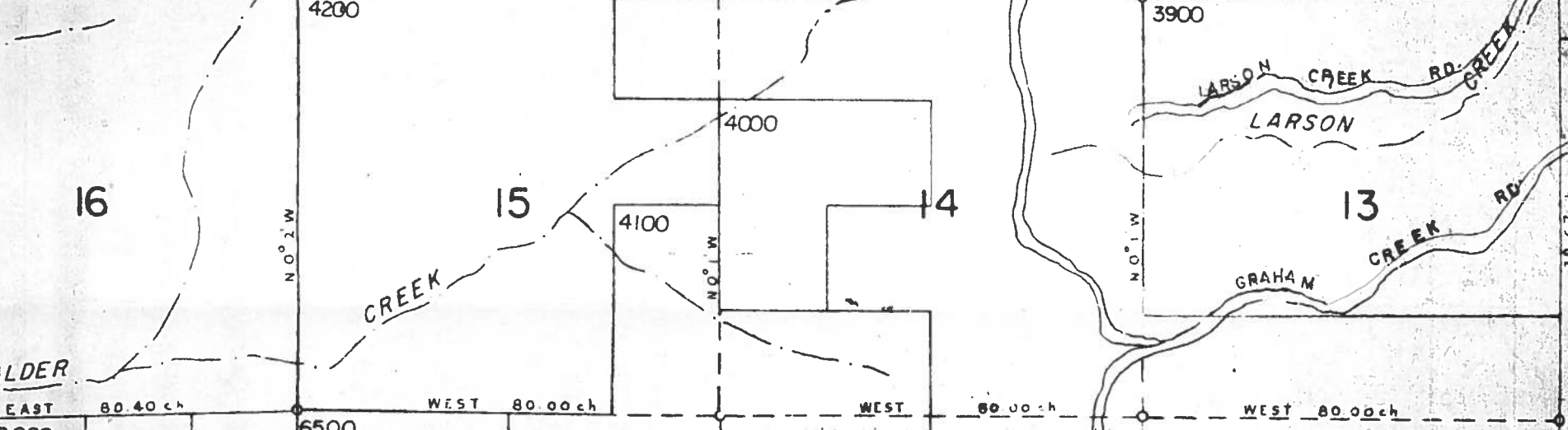
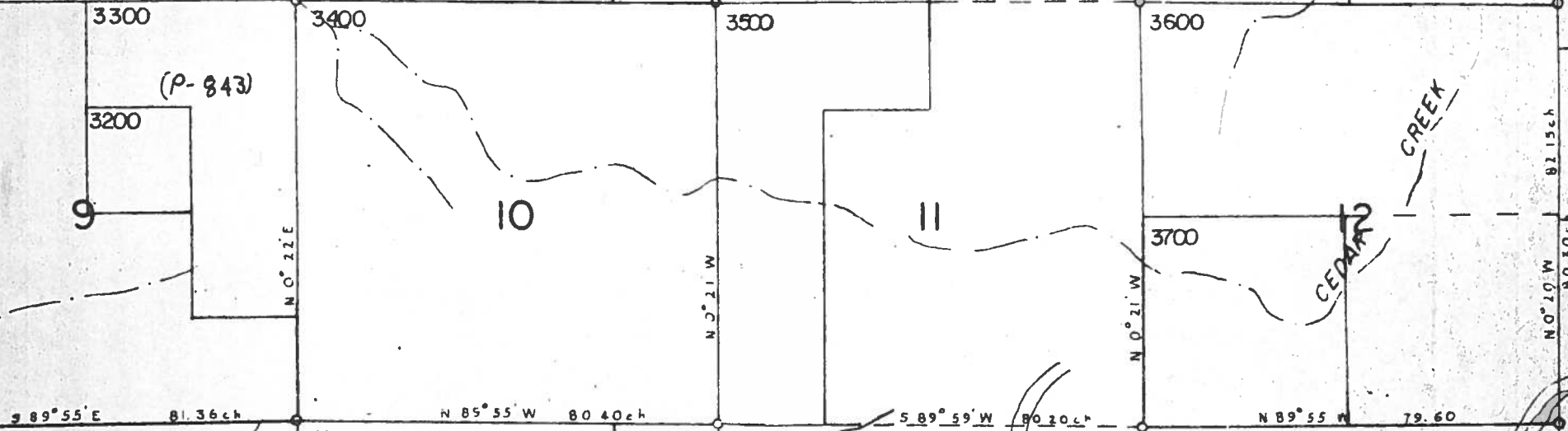
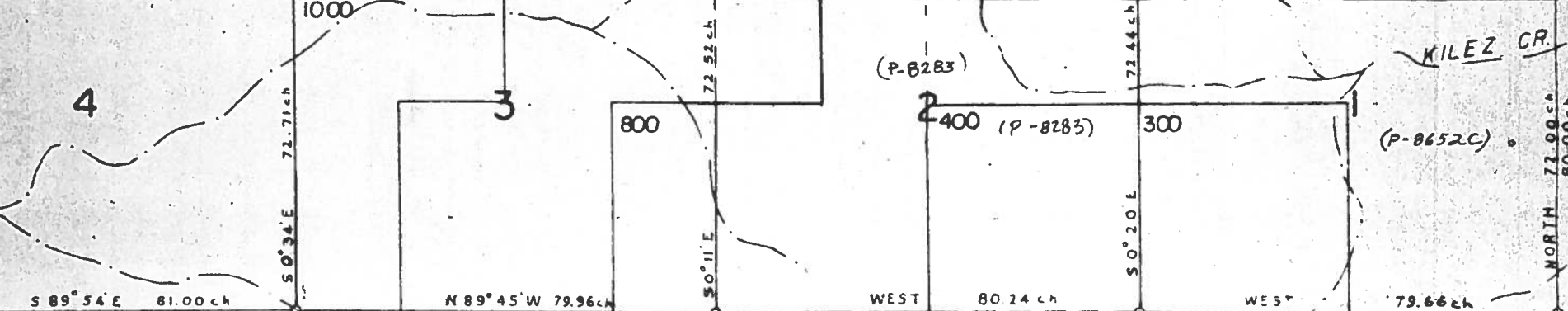
32 2E

31 2E

INCORRECT ZONING

SEVENTH STANDARD PARALLEL SOUTH

3	2	1	9004	3	2		4	3	2	5001	8004	3	1002
26.46	26.04	25.62	25.37	25.28	25.18	25.09	25.02	24.98	24.94	24.90	24.77	24.55	24.33



Application No. P-83015
Permit No.

SEE LEE PRIVATE ROAD APPROVED FOR 5 PARCELS IN 1972
Check up info on central file 74.7400

33 3E 6
33 3E 7
33 3E 18
33 3E 19
33 3E 30
33 3E 31