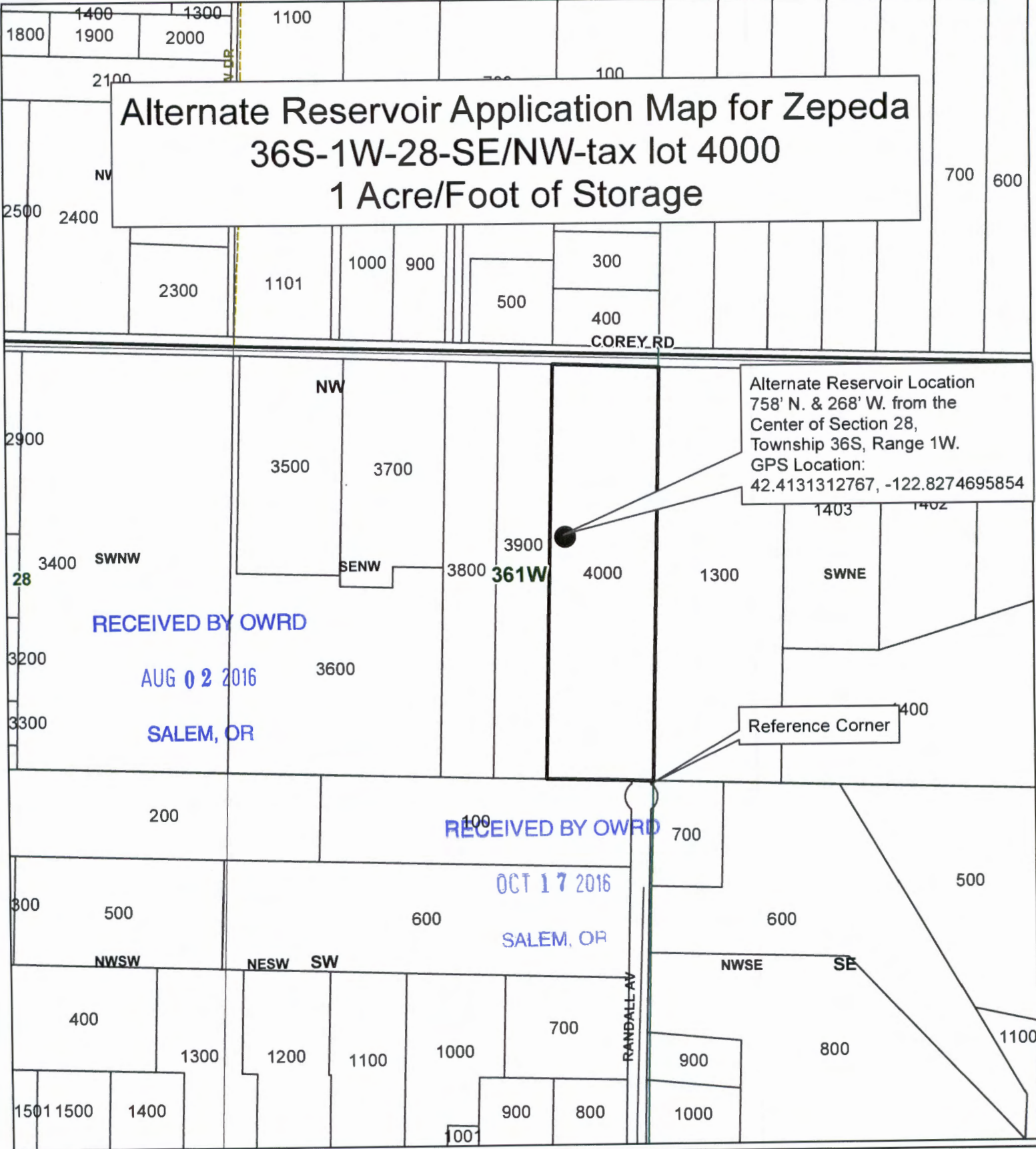


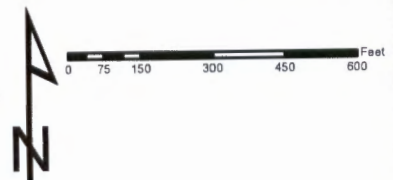
# Alternate Reservoir Application Map for Zepeda 36S-1W-28-SE/NW-tax lot 4000 1 Acre/Foot of Storage



### Legend

- Alt. Reservoir Location
- Taxlot 4000
- Taxlots
- Townships
- Sections
- Quarter Sections
- Quarter Quarter Sections

1 inch = 400 feet



**JACKSON COUNTY  
WATERMASTER**

Prepared by Travis Kelly

This map is based on a digital database compiled by Jackson County from a variety of sources. Jackson County cannot accept responsibility for errors, omissions, or positional accuracy. There are no warranties, expressed or implied.