

IMPORTANT  
This Map for Assessment  
and Taxation Purposes  
ONLY

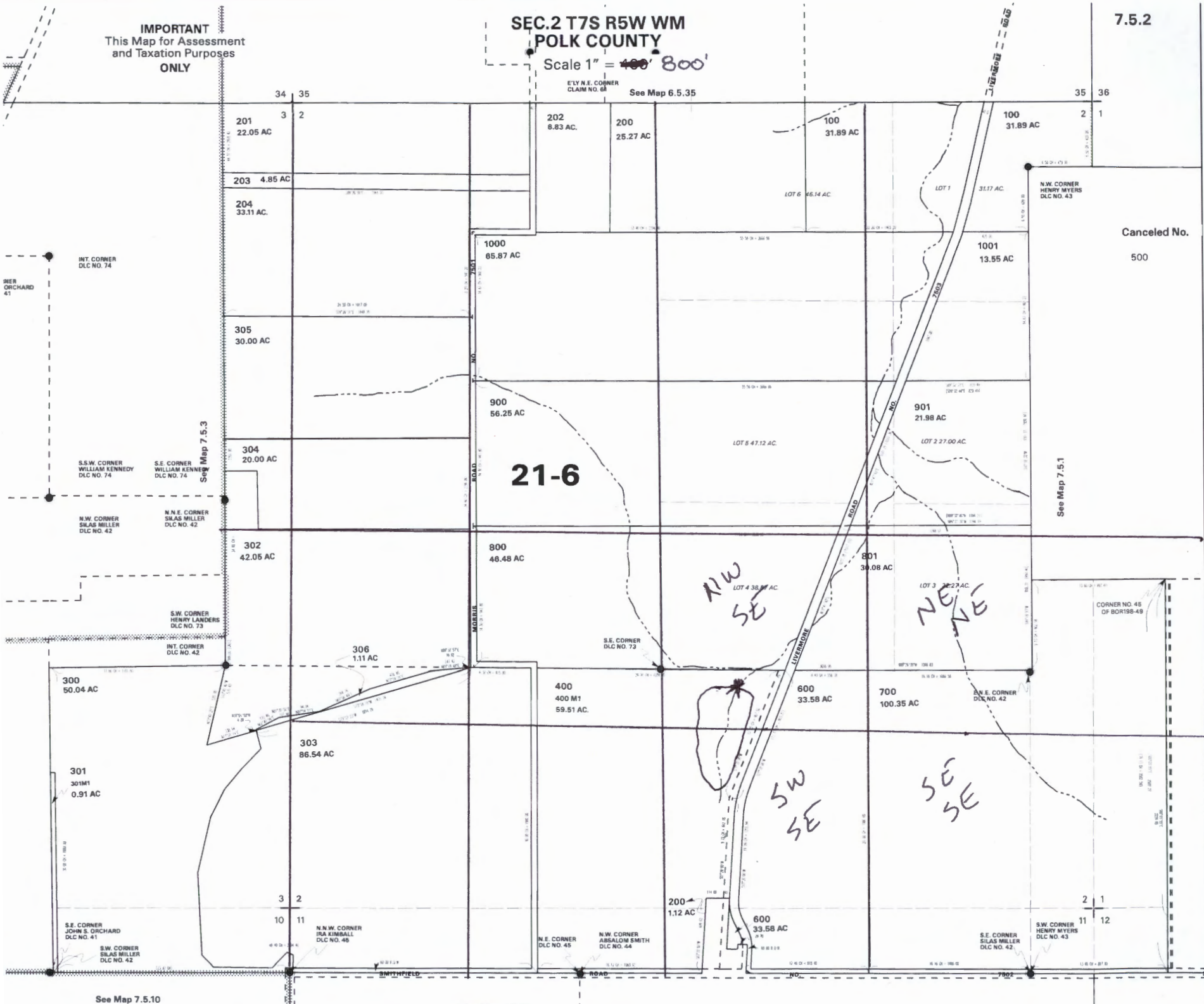
SEC. 2 T7S R5W WM  
POLK COUNTY

Scale 1" = 400' 800'

E'LY N.E. CORNER  
CLAIM NO. 64

See Map 6.5.35

7.5.2



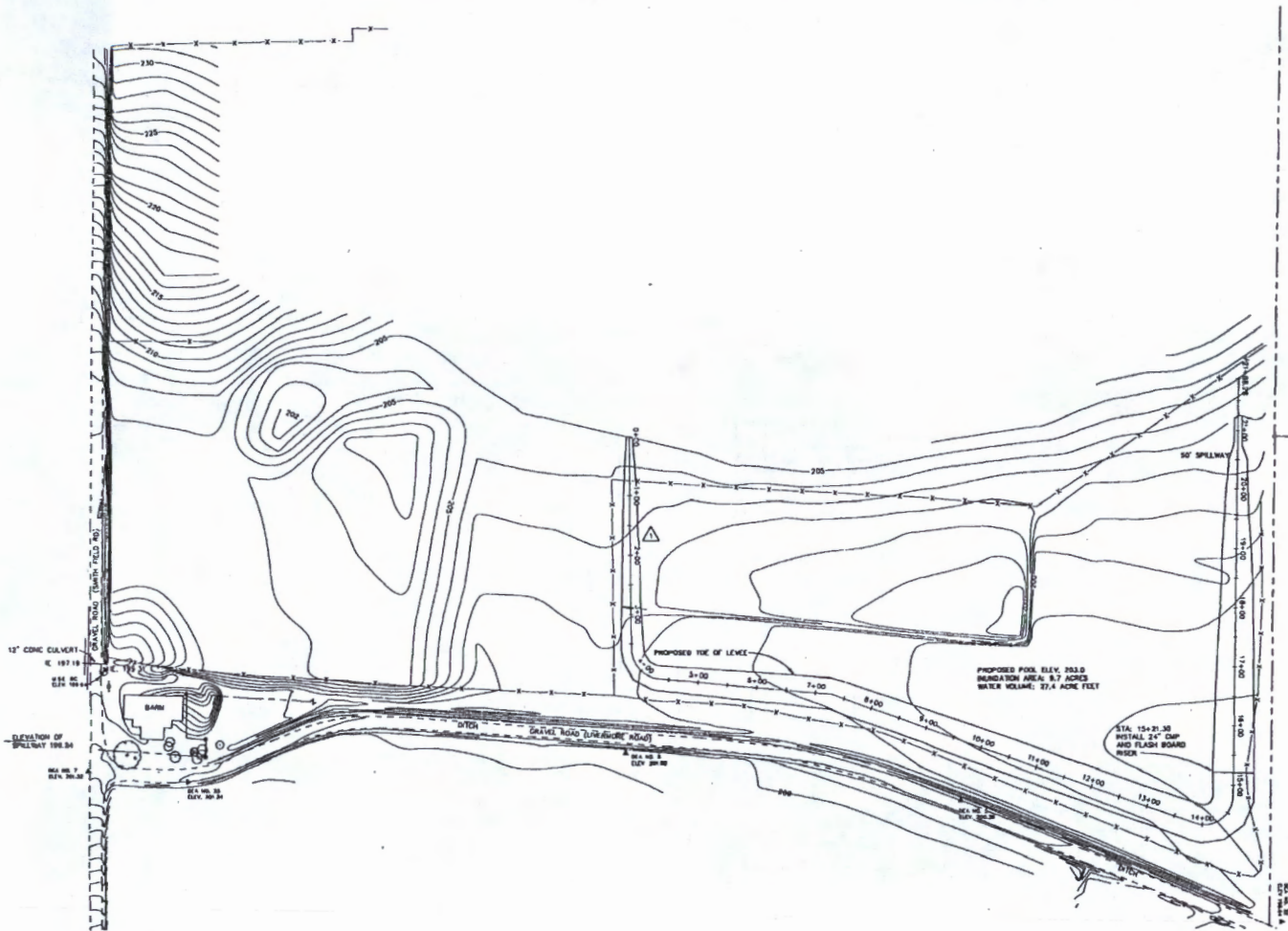
Canceled No.  
500

DAMN / SPILLWAY LOCATED APPROX. 1400' N, 3000' E FROM  
SW CORNER OF SECTION 2  
A-88309

See Map 7.5.10

See Map 7.5.11

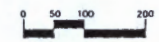
R-83934



RECEIVED

SEP 1998

WASHINGTON STATE DEPARTMENT OF  
FISH AND WILDLIFE SERVICE



SCALE: 1" = 100'

**NOTES**

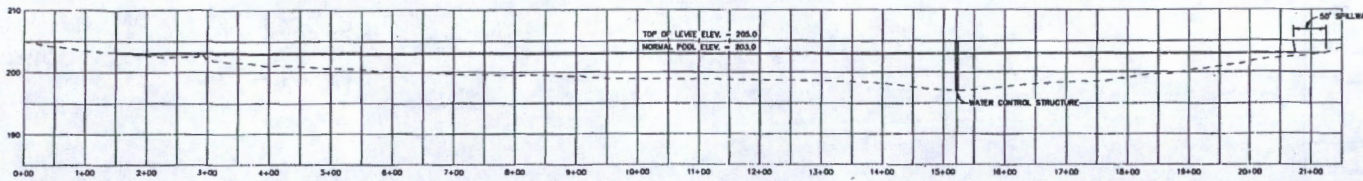
- 1 ELEVATION BASED ON U.S.C. BRASS CAP "S-A" ELEVATION 199.94

**LEGEND**

- EDGE OF GRAVEL ROAD
- - - - - APPROXIMATE PROPERTY LINE
- ~ ~ ~ ~ ~ EDGE OF TREE AND BRUSH LINE
- — — — CENTERLINE OF DITCH
- FOUND DEPARTMENT OF INTERIOR BRASS CAP
- ▲ DECA CONTROL / TBM - 1/2" R. W/ PLASTIC CAP
- U.S.C. BRASS BAP
- ⊙ ASH TREE
- ⊗ WELL

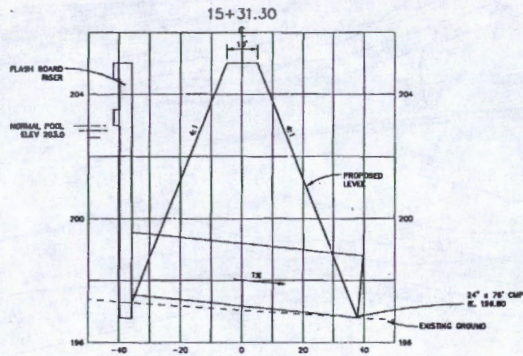
Application No. R-83934  
Permit No. R-12754

REV.	DATE	DESCRIPTION	TAB	BY
1		REVISED LEVEL & ALIGNMENT		
<small>OFFICE OF THE DIRECTOR</small> <b>FISH AND WILDLIFE SERVICE</b> <small>REGION 1, OFFICE OF ENGINEERING</small> <small>PULLMAN, WASHINGTON</small>				
<small>DESIGNED</small> <small>DRAWN</small> <small>CHECKED</small>		<b>STUART WETLAND RESTORATION PROJECT</b>  <b>SITE PLAN</b>		
<small>SURVEYED</small> <small>DATE</small>	<small>DECA</small> <small>DATE</small>	<small>DESIGNED</small> <small>DATE</small>	<small>DRAWN</small> <small>DRAWING NO.</small>	<small>CHECKED</small> <small>TAS</small>
	7/26/98			ERC



△ LEVEE PROFILE  
 HORIZONTAL: 1" = 100'  
 VERTICAL: 1" = 10'

RECEIVED  
 SEP 1 1998  
 WATER RESOURCES DEPT  
 RA-PA OFFICE



△ LEVEE SECTION  
 HORIZONTAL: 1" = 20'  
 VERTICAL: 1" = 2'

Application No. R-83934  
 Permit No. R-12754

REV.	DATE	DESCRIPTION	TAS	BY		
1/28		REVISED LEVEE B ALIGNMENT				
UNITED STATES DEPARTMENT OF THE INTERIOR <b>FISH AND WILDLIFE SERVICE</b> REGION 1, OFFICE OF ENGINEERING PERRIS, CALIF.						
DESIGNED	<b>STUART WETLAND RESTORATION PROJECT</b>  <b>PROFILE / SECTIONS</b>					
REVIEWED						
APPROVED						
DATE	DEA	DESIGNED	DRWN	TAS	DECIDED	ERC.
	7/25/98					