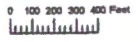


ACCT #	MAP ID
10575	1013060000100
329	1013060000200
330	1013060000300
167	1013060000301
332	1013060000500
10364	1013360000400

Gr-13405

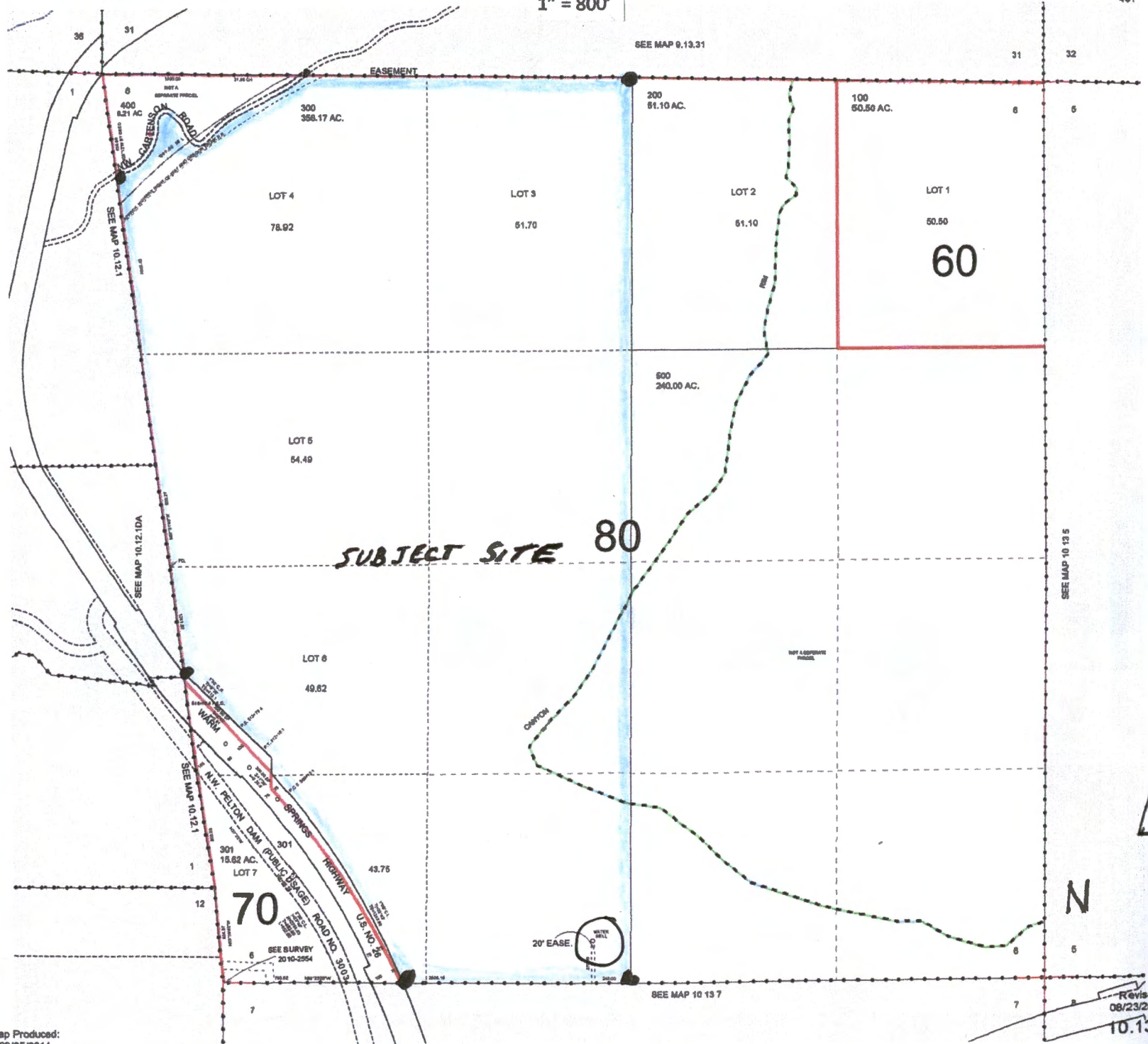
THIS MAP WAS PREPARED FOR ASSESSMENT PURPOSE ONLY



SECTION 6 T.10S. R.12E. W.M.
JEFFERSON COUNTY
1" = 800'

10.13.6

CANCELLED:
302
401



RECEIVED

NOV 01 2016

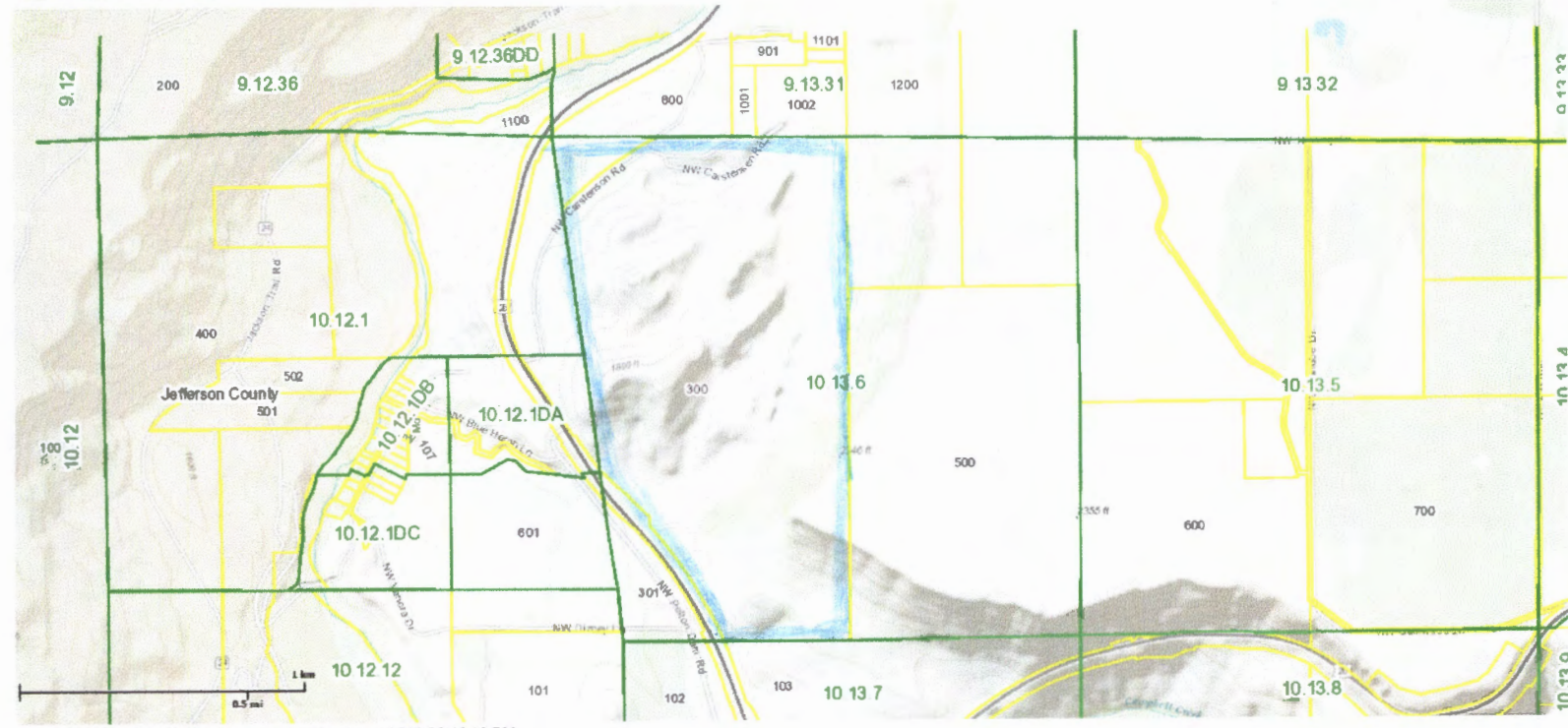
WATER RESOURCES DEPT
SALEM, OREGON

Map Produced:

Revised
08/23/2001
10.13.6

The Oregon Map

New Directions



RECEIVED

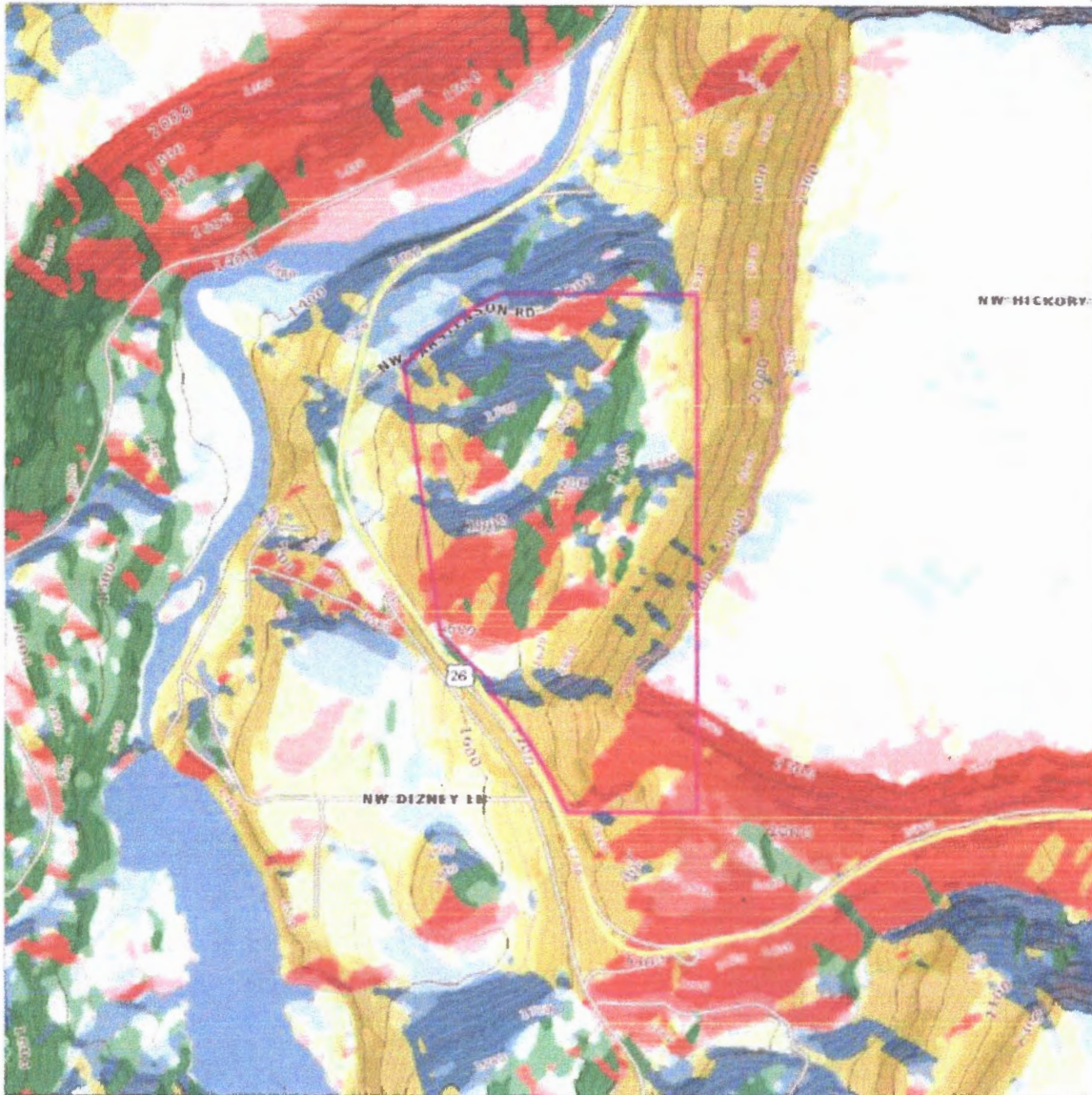
NOV 01 2016

WATER RESOURCES DEPT
SALEM, OREGON

G-18406

ASPECT MAP
1013060000300

ATLIS
AMERITITLE LAND INFORMATION SYSTEM



LEGEND

- 100ft Contour
- 20ft Contour
- Property of Interest

Disclaimer:
This map was created from digital databases provided by the Jefferson County GIS Dept. AmeriTitle has provided this information as a courtesy and assumes no liability for errors, omissions, or the positional accuracy of the data, and does not warrant the fitness of this product for any particular purpose.

RECEIVED

NOV 01 2016

WATER RESOURCES DEPT
SALEM, OREGON

G-18406

PHOTO MAP

1013060000300

ATLIS
AMERITITLE LAND INFORMATION SYSTEM



LEGEND

County
 City
 UGB

Property of Interest

1' = 1000'

Disclaimer:
 This map was created from digital databases provided by the Jefferson County GIS Dept. AmeriTitle has provided this information as a courtesy and as such we assume no liability for errors, omissions, or the positional accuracy of the data, and does not warrant the fitness of this product for any particular purpose.

RECEIVED

NOV 01 2016

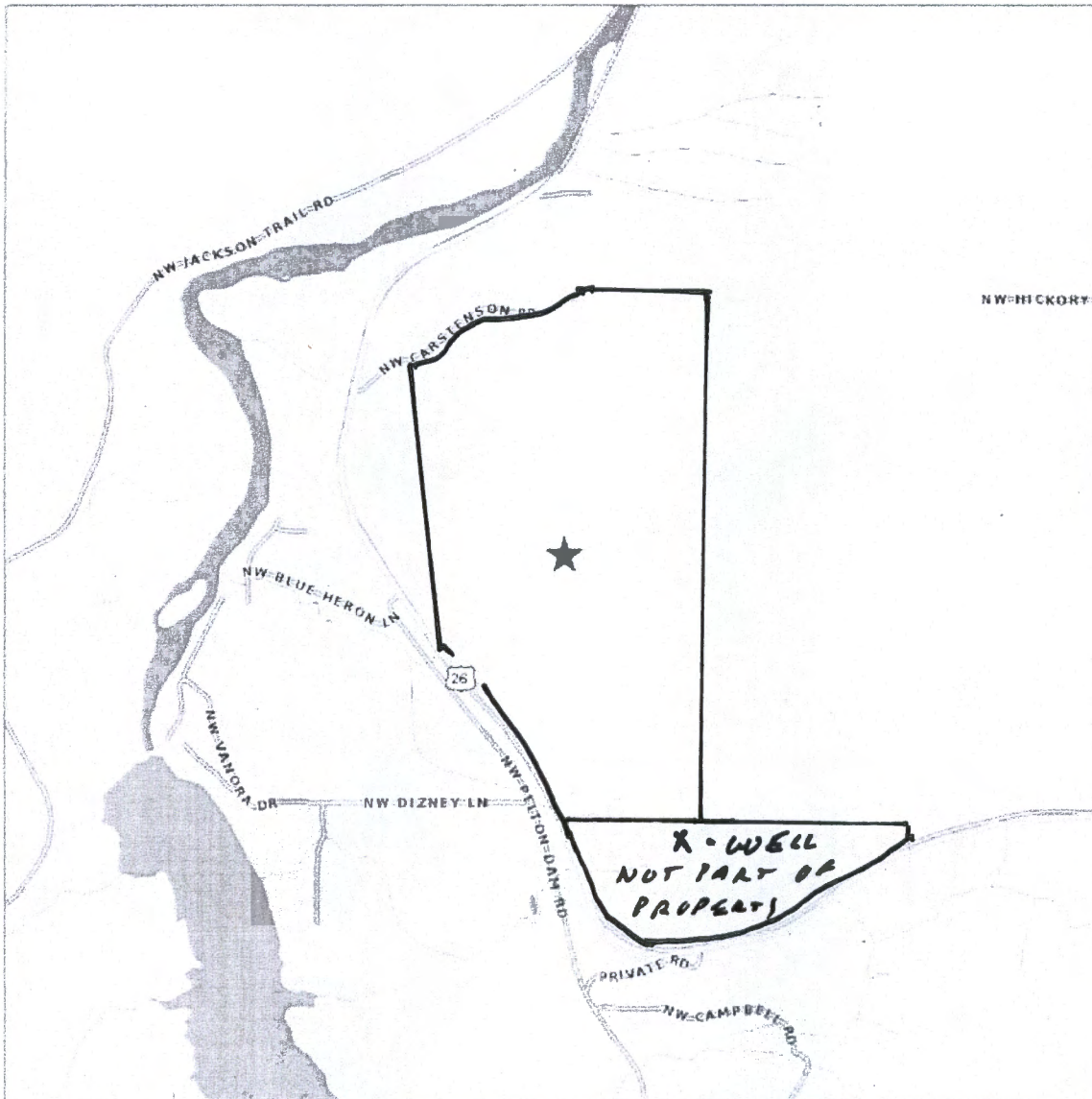
WATER RESOURCES DEPT
SALEM, OREGON

G-18406

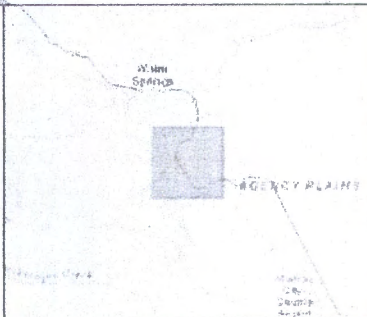
LOCATOR MAP

1013060000300

ATLIS
AMERITITLE LAND INFORMATION SYSTEM



Courtesy of:



LEGEND

- County
- City
- UGB
- Property of Interest

1" = 1800'

Disclaimer:
This map was created from digital databases provided by the Jefferson County GIS Dept. AmeriTitle has provided this information as a courtesy and assumes no liability for errors, omissions, or the positional accuracy of the data, and does not warrant the fitness of this product for any particular purpose.

RECEIVED

NOV 01 2016

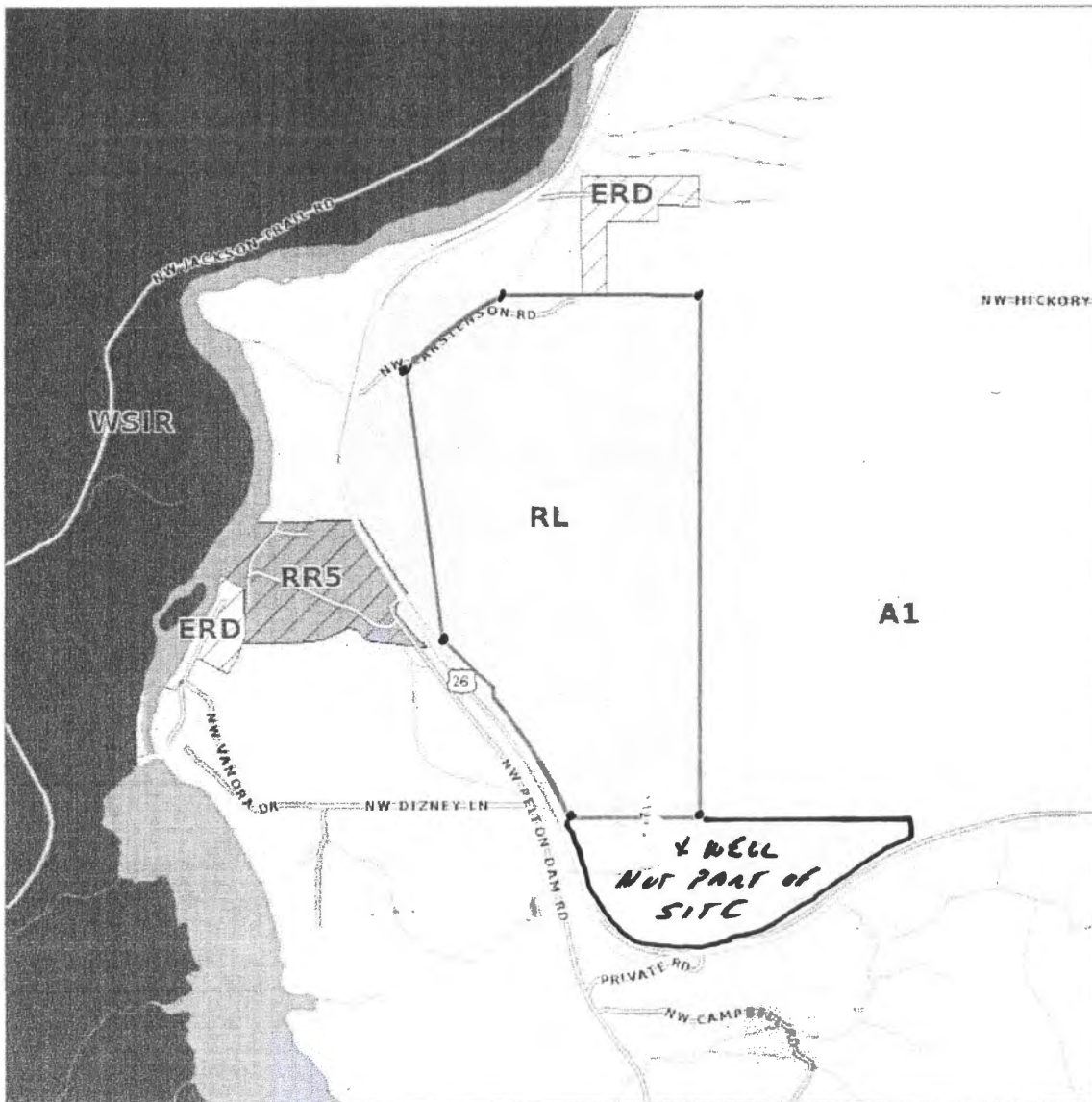
WATER RESOURCES DEPT
SALEM, OREGON

G-10406

ZONING MAP

1013060000300

ATLIS
AMERITITLE LAND INFORMATION SYSTEM



LEGEND

County
 City
 UGB

Property of Interest

1" = 1,800'

Disclaimer:
This map was created from digital databases provided by the Jefferson County GIS Dept. AmeriTitle has provided this information as a courtesy and assumes no liability for errors, omissions, or the positional accuracy of the data, and does not warrant the fitness of this product for any particular purpose.

RECEIVED

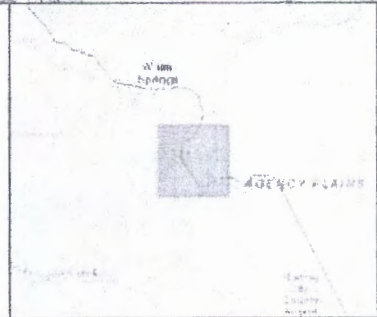
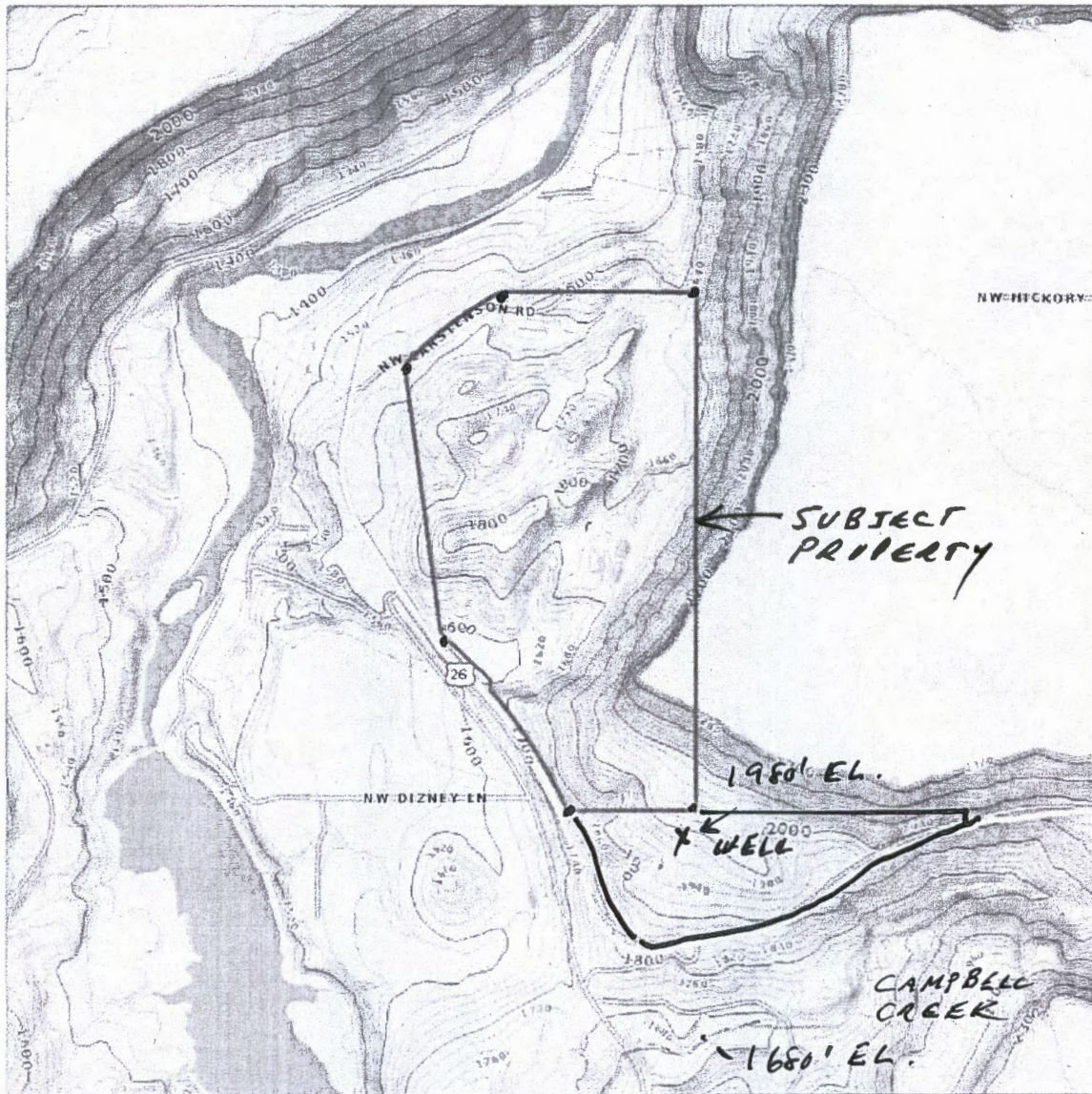
NOV 01 2016

WATER RESOURCES DEPT
SALEM, OREGON

G-18406

TERRAIN MAP
1013060000300

ATLIS
AMERITITLE LAND INFORMATION SYSTEM



LEGEND

- County
- City
- UGB
- Property of Interest

1" = 1,800'

Disclaimer:
This map was created from digital databases provided by the Jefferson County GIS Dept. AmeriTitle has provided this information as a courtesy and assumes no liability for errors, omissions, or the positional accuracy of the data, and does not warrant the fitness of this product for any particular purpose.

RECEIVED

NOV 01 2016

WATER RESOURCES DEPT
SALEM, OREGON

G-18406

ACCT#	MAP ID
10575	1013060000100
329	1013060000200
330	1013060000300
167	1013060000301
332	1013060000500
10364	1013360000400

THIS MAP WAS PREPARED FOR ASSESSMENT PURPOSE ONLY

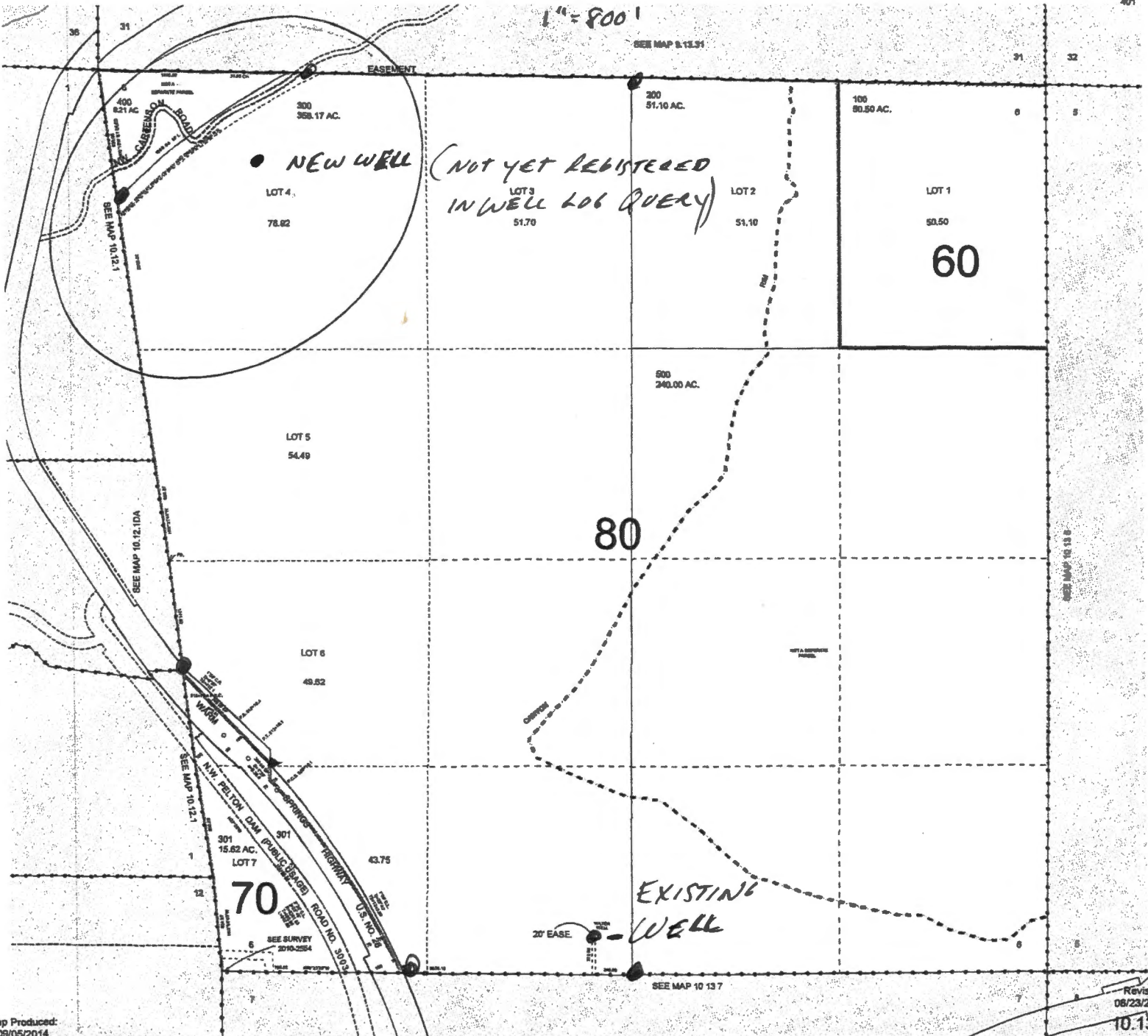
0 100 200 300 400 Feet

SECTION 6 T.10S. R.12E. W.M.
JEFFERSON COUNTY

10.13.6

CANCELLED:
302
401

1" = 800'



2-18-2016

WATER RESOURCES DEPT
SALEM, OREGON

NOV 01 2016

RECEIVED

Map Produced:
09/05/2014

Revised
08/23/2001

10.13.6

AREAS OF WATER USAGE - LOS, 13E, SEC. 6

