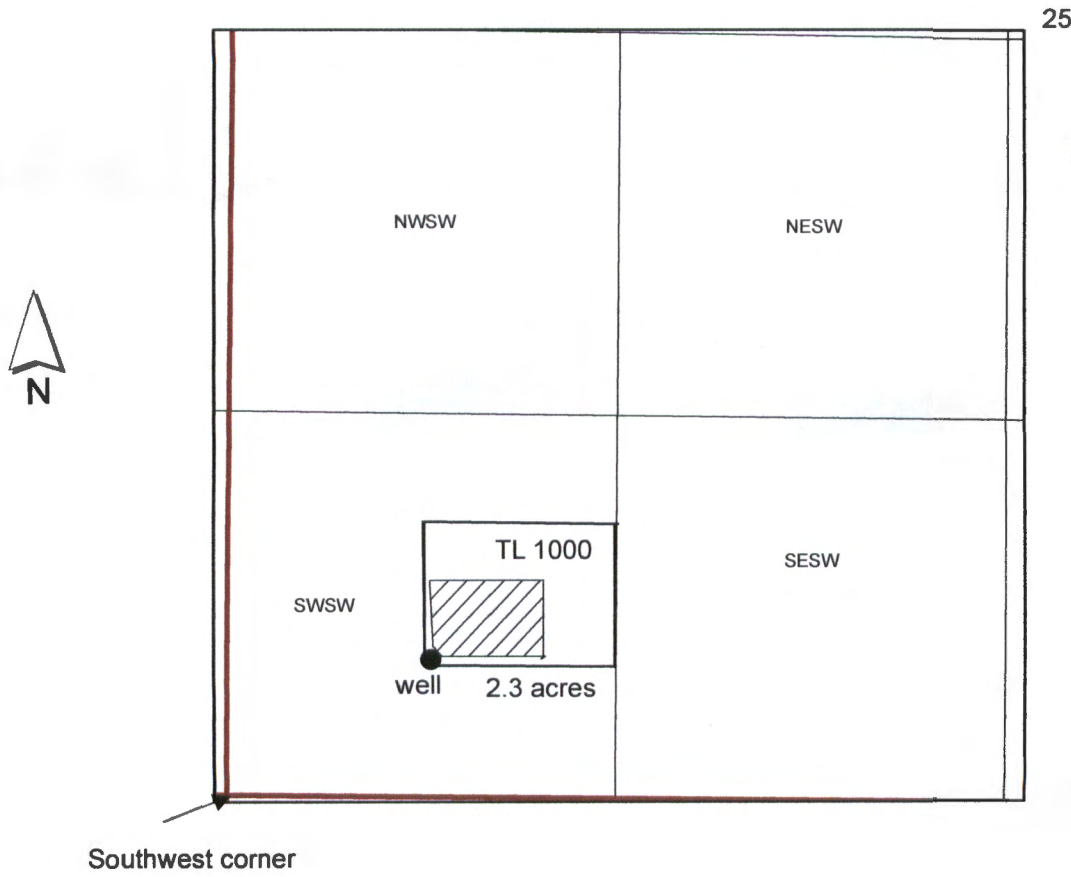


# T36S R7W Southwest Quarter Section 25



RECEIVED BY OWRD

AUG 09 2016

SALEM, OR

1 inch = 660 feet

The well will be located approximately 497 ft north and 693 ft east from the southwest corner of Section 25, according to the applicant.

RECEIVED BY OWRD

OCT 31 2016

SALEM, OR

G-18407