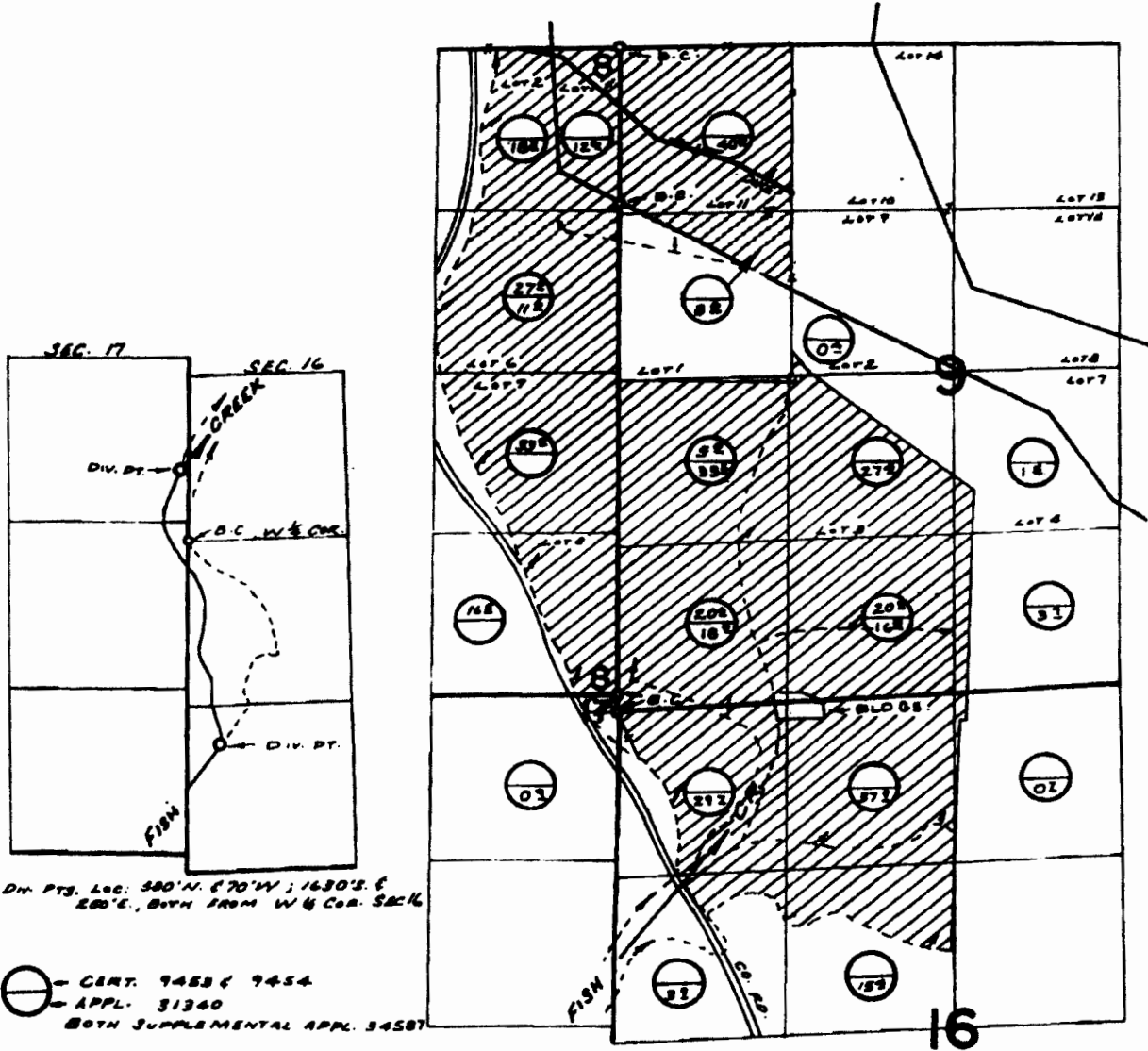


# T.37S.R.24E.W.M.



## FINAL PROOF SURVEY

UNDER

Application No. <sup>31340</sup> ~~34587~~ Permit No. <sup>24697</sup> ~~27163~~

IN NAME OF

JERRY BARRY, JR

Surveyed July 20 1970, by R. MUCKEN

RECEIVED

NOV 28 2010

OWSD  
SALEM, OREGON

**Area of USE by Tax Lots - Map 37 24:**

- 1) T.L. 1400 = 93.4<sup>ac</sup>
- 2) T.L. 1501 = 6.4<sup>ac</sup>
- 3) T.L. 1500 = 387.9<sup>ac</sup>

---

- Total = 427.7<sup>ac</sup>

**Area of USE by 1/4, 1/4:**

- 30.9<sup>ac</sup> - NE 1/4, NE 1/4 - Section 8
- 38.6<sup>ac</sup> - SE 1/4, NE 1/4 - " "
- 33.0<sup>ac</sup> - NE 1/4, SE 1/4 - " "
- 16.5<sup>ac</sup> - SE 1/4, SE 1/4 - " "

---

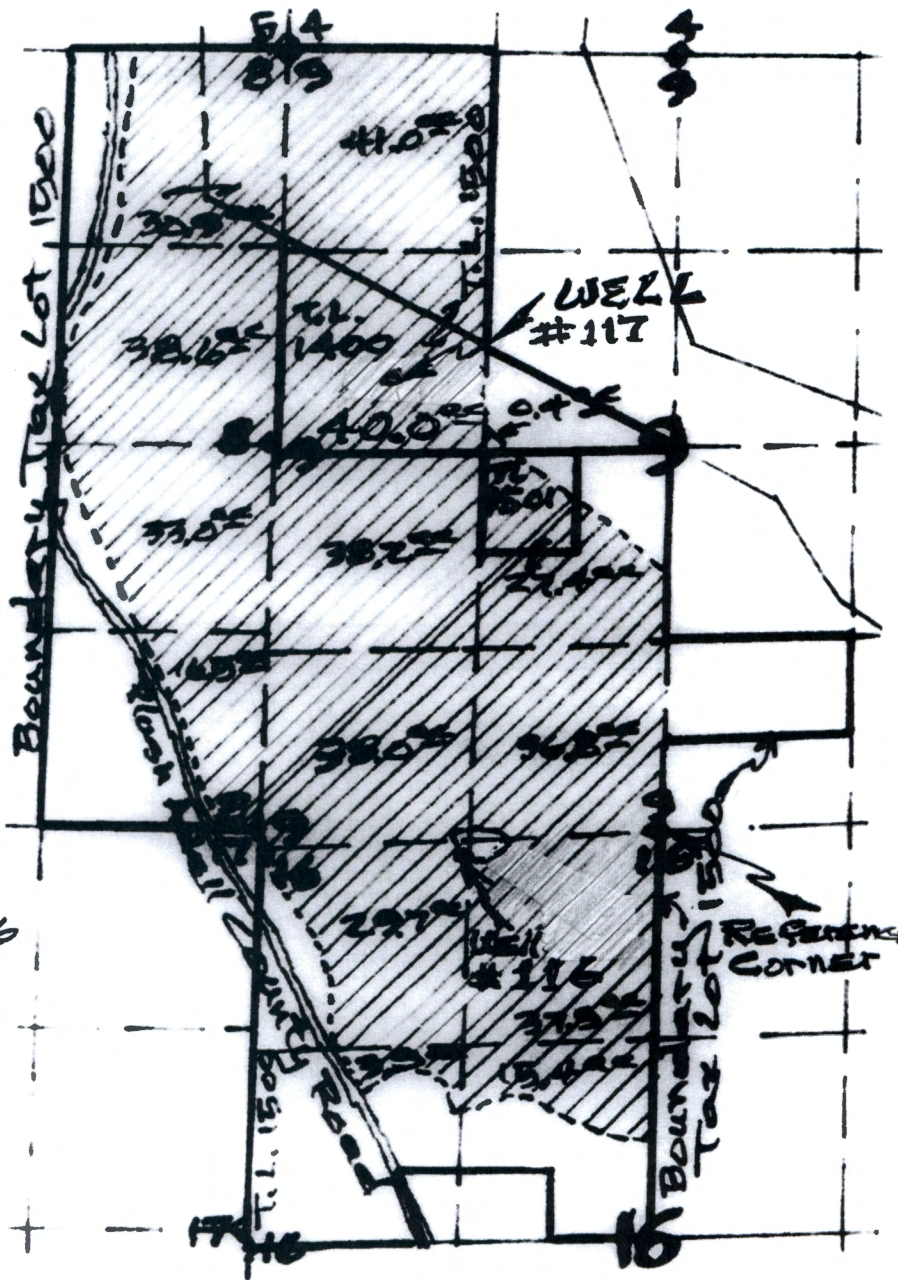
- 41.2<sup>ac</sup> - NW 1/4, NW 1/4 - Section 9
- 40.0<sup>ac</sup> - SW 1/4, NW 1/4 - " "
- 0.4<sup>ac</sup> - SE 1/4, NW 1/4 - " "
- 27.4<sup>ac</sup> - NE 1/4, SW 1/4 - " "
- 38.2<sup>ac</sup> - NW 1/4, SW 1/4 - " "
- 38.0<sup>ac</sup> - SW 1/4, SW 1/4 - " "
- 36.8<sup>ac</sup> - SE 1/4, SW 1/4 - " "

---

- 37.9<sup>ac</sup> - NE 1/4, NW 1/4 - Section 16
- 29.7<sup>ac</sup> - NW 1/4, NW 1/4 - " "
- 3.9<sup>ac</sup> - SW 1/4, NW 1/4 - " "
- 15.4<sup>ac</sup> - SE 1/4, NW 1/4 - " "

---

- 427.7<sup>ac</sup> = Total by 1/4, 1/4



RECEIVED

NOV 28 2016

OWRD  
SALEM, OREGON

**T.37S, R.24E, WM.**

EXISTING WELL #116 is 1330' WEST and 80' SOUTH of the 1/4 CORNER common to Sections 9 & 16 -

PROPOSED WELL #117 is 1930' WEST and 2650' NORTH of the 1/4 CORNER common to Sections 9 & 16 -

**LAKE COUNTY, OREGON**

Dan & Lauri Crain  
11/19/2016

SCALE  
1" = 1320'  
G-10412