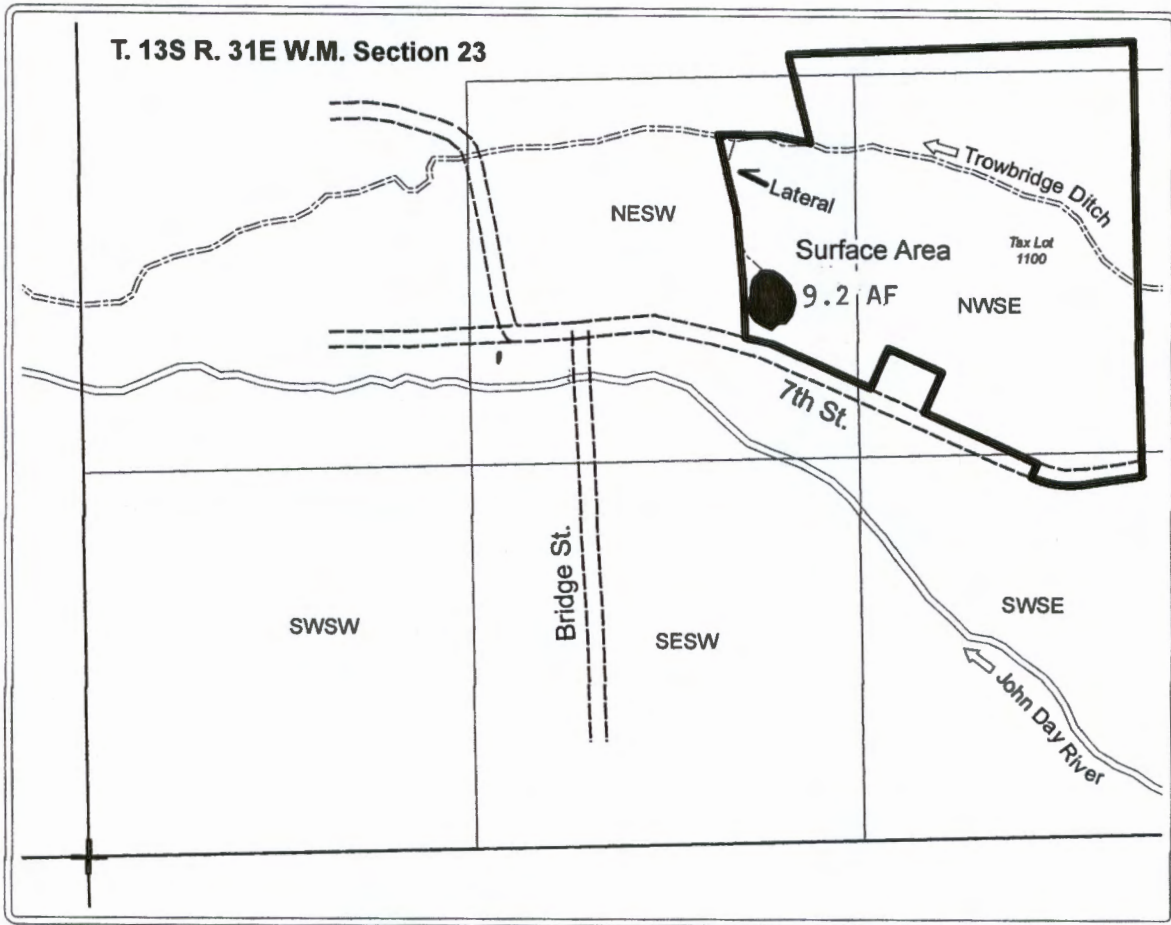


**Application for an Alternate Review Reservoir
For
John Day / Canyon City
Parks and Recreation Department**



Pond is located approximately 1929 ft north and 2314 ft east of the SW corner of Section 23 of T. 13S R. 31E W.M. being within the NESW of Section 23, T. 13S R. 31E W.M.

Trowbridge Ditch Point of Diversion : Approximately 546 ft south and 667 ft west of the NE corner of Section 25 of T. 13S R. 31E W.M. being within the NENE of Section 25, T. 13S R. 31E W.M.

Legend

- Proposed Pond
- Trowbridge Ditch
- Lateral

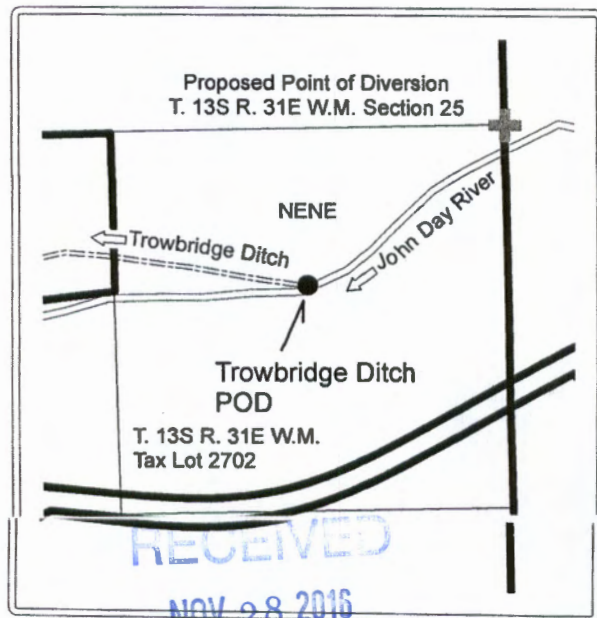
Taxlot Boundary

- Tax Lot Boundary

RECEIVED BY OWRD

NOV 14 2016

SALEM, OR



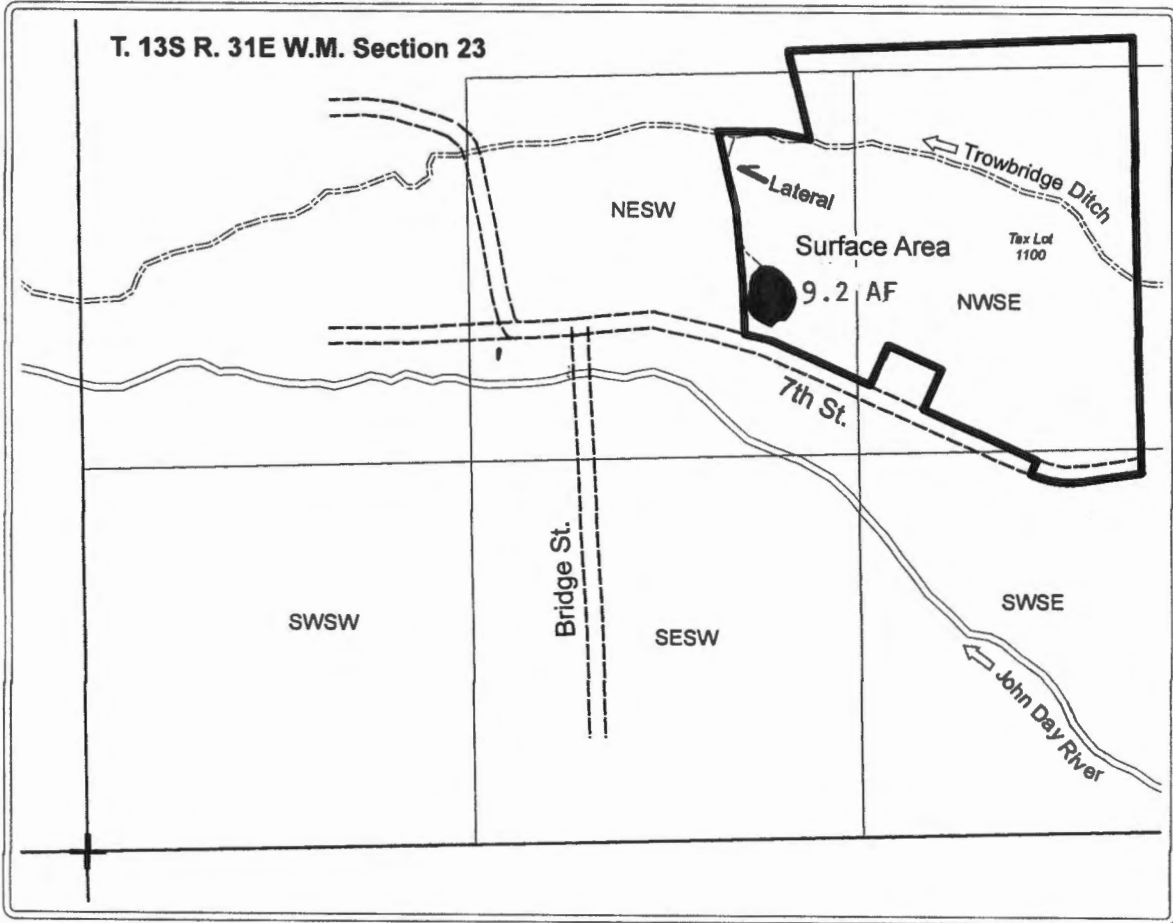
RECEIVED

NOV 28 2016

OWRD
SALEM, OREGON

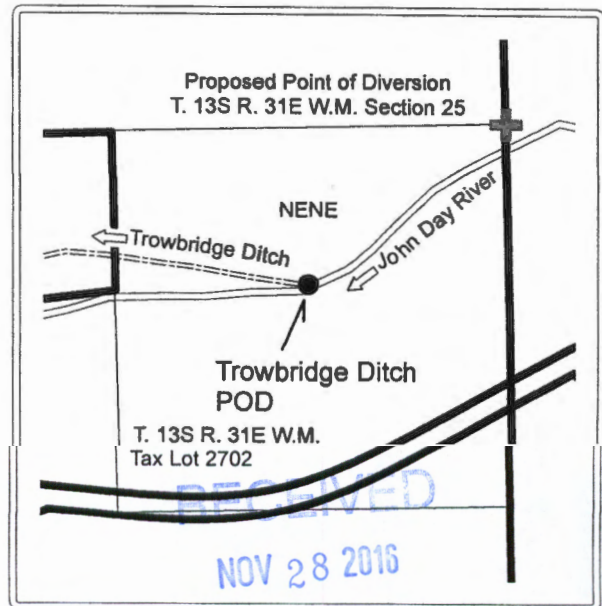
R-88316

**Application for an Alternate Review Reservoir
For
John Day / Canyon City
Parks and Recreation Department**



Pond is located approximately 1929 ft north and 2314 ft east of the SW corner of Section 23 of T. 13S R. 31E W.M. being within the NESW of Section 23, T. 13S R. 31E W.M.

Trowbridge Ditch Point of Diversion : Approximately 546 ft south and 667 ft west of the NE corner of Section 25 of T. 13S R. 31E W.M. being within the NENE of Section 25, T. 13S R. 31E W.M.



RECEIVED BY OWRD

NOV 14 2016

SALEM, OR

RECEIVED

NOV 28 2016

OWRD
SALEM, OREGON

Legend

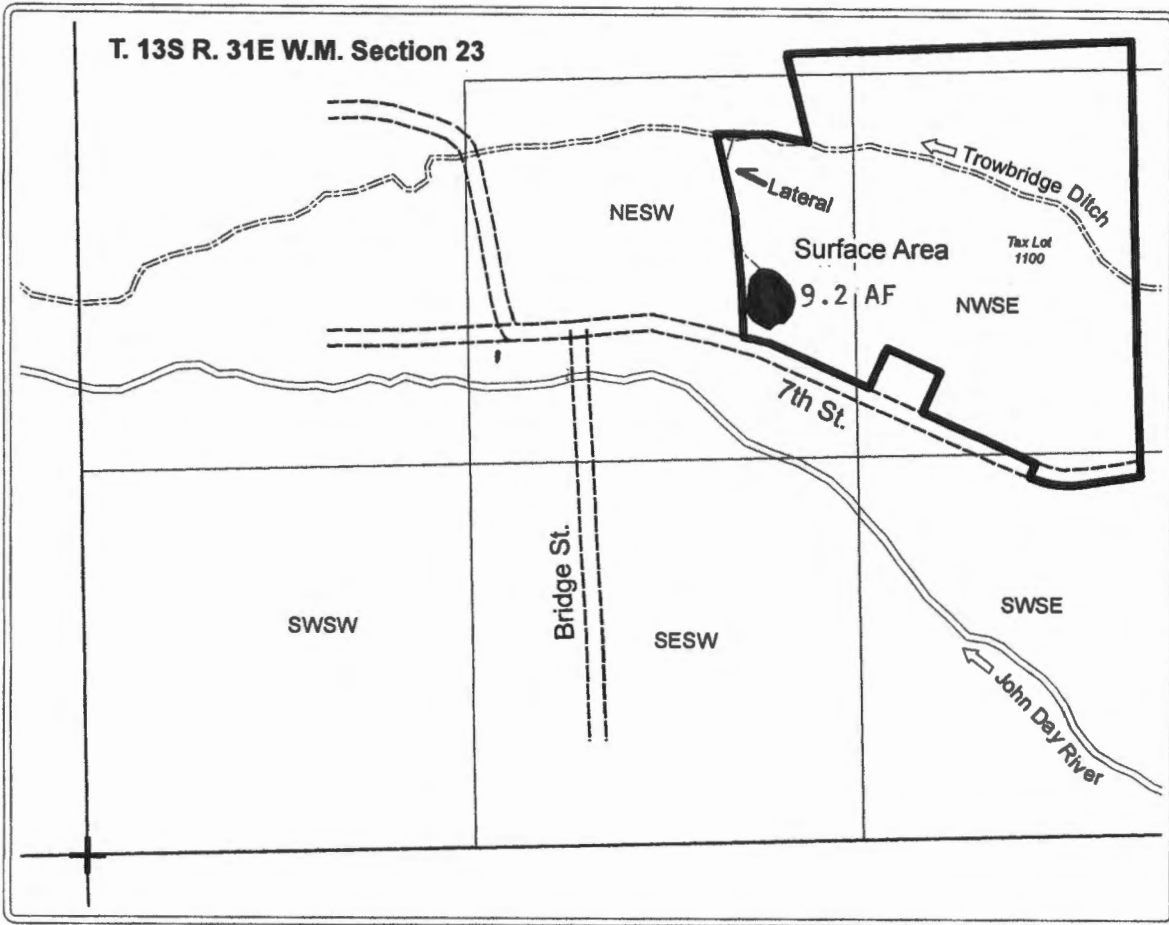
- Proposed Pond
- Trowbridge Ditch
- Lateral

Taxlot Boundary

- Tax Lot Boundary

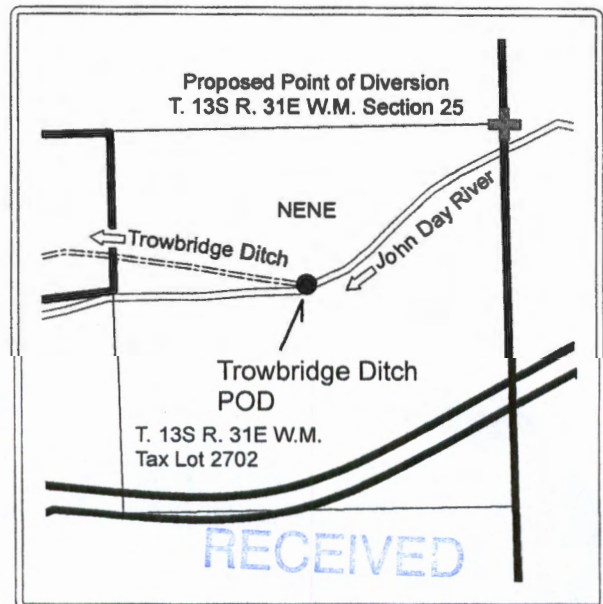
R-88716

**Application for an Alternate Review Reservoir
For
John Day / Canyon City
Parks and Recreation Department**



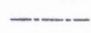


Pond is located approximately 1929 ft north and 2314 ft east of the SW corner of Section 23 of T. 13S R. 31E W.M. being within the NESW of Section 23, T. 13S R. 31E W.M.

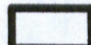
Trowbridge Ditch Point of Diversion : Approximately 546 ft south and 667 ft west of the NE corner of Section 25 of T. 13S R. 31E W.M. being within the NENE of Section 25, T. 13S R. 31E W.M.



Legend

-  Proposed Pond
-  Trowbridge Ditch
-  Lateral

Taxlot Boundary

-  Tax Lot Boundary

RECEIVED BY OWRD

NOV 14 2016

SALEM, OR

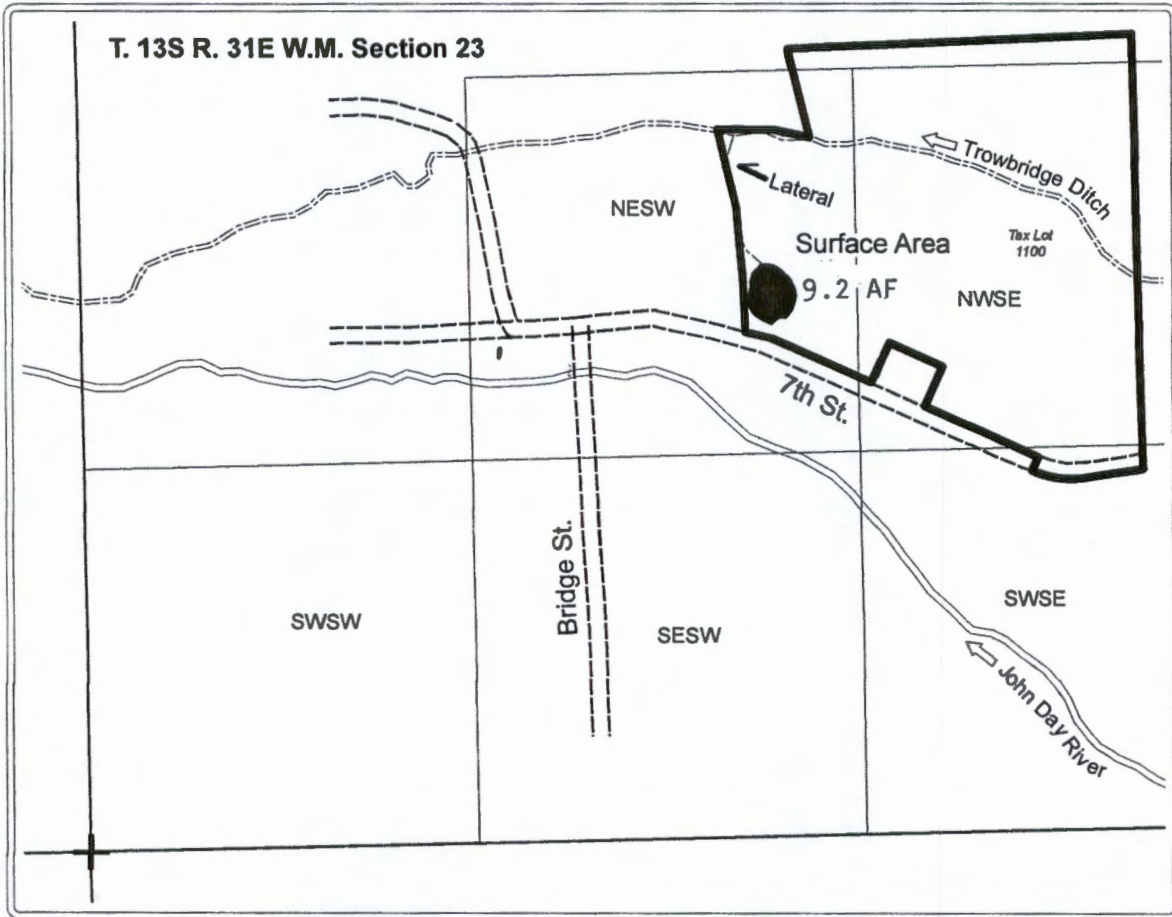
RECEIVED

NOV 28 2016

OWRD
SALEM, OREGON

R-80316

Application for an Alternate Review Reservoir For John Day / Canyon City Parks and Recreation Department



Pond is located approximately 1929 ft north and 2314 ft east of the SW corner of Section 23 of T. 13S R. 31E W.M. being within the NESW of Section 23, T. 13S R. 31E W.M.

Trowbridge Ditch Point of Diversion : Approximately 546 ft south and 667 ft west of the NE corner of Section 25 of T. 13S R. 31E W.M. being within the NENE of Section 25, T. 13S R. 31E W.M.

Legend

- Proposed Pond
- Trowbridge Ditch
- Lateral

Taxlot Boundary

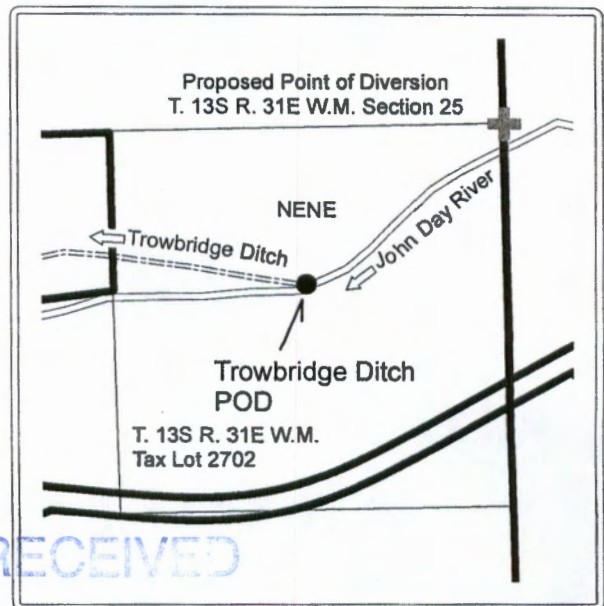
- Tax Lot Boundary

R-88316

RECEIVED BY OWRD

NOV 14 2016

SALEM, OR



RECEIVED

NOV 28 2016

OWRD
SALEM, OREGON