

RECEIVED

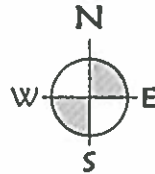
DEC 12 2016

WATER RESOURCES DEPT
SALEM, OREGON

0 200 400 800 FT.



SCALE: 1" = 400'

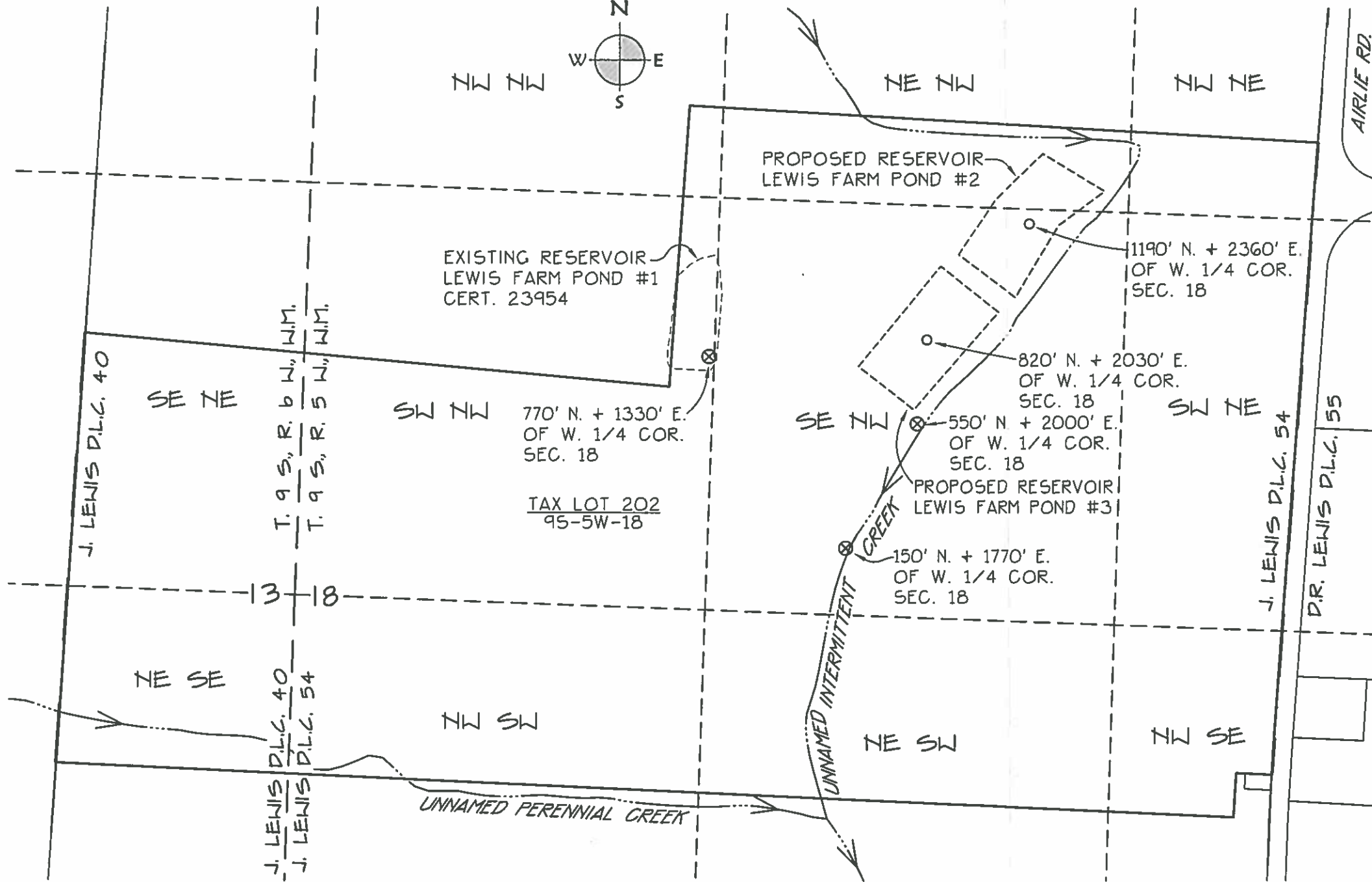


ALTERNATIVE RESERVOIR APPLICATION MAP

LOCATED IN

TAX LOT 202, MAP 95-5W-18
NW 1/4, SEC. 18, T. 9 S., R. 5 W., W.M.
J. LEWIS DONATION LAND CLAIM No. 54
POLK COUNTY, OREGON

NOVEMBER 2, 2016



LEGEND:

- CENTER OF RESERVOIR (DAM ON ALL SIDES OF POND)
- ⊗ SOURCE FOR LEWIS FARM POND #2 AND LEWIS FARM POND #3, WATER TO BE PUMPED INTO PONDS

NOTES:

- 1) GIS DATA FROM POLK COUNTY DATABASE
- 2) THIS MAP IS NOT INTENDED TO PROVIDE LEGAL DIMENSIONS OR LOCATIONS OF PROPERTY OWNERSHIP LINES.



K & D ENGINEERING, Inc.
276 N.W. Hickory Street P.O. Box 725
Albany, Oregon 97321
(541) 928-2583

Date: 11/2/2016 Time: 9:32
View: VIEW Scale: 1=400(P5)
File: dwg\2016\16-193\16-193-alt-res.dwg (lan)

R-88342