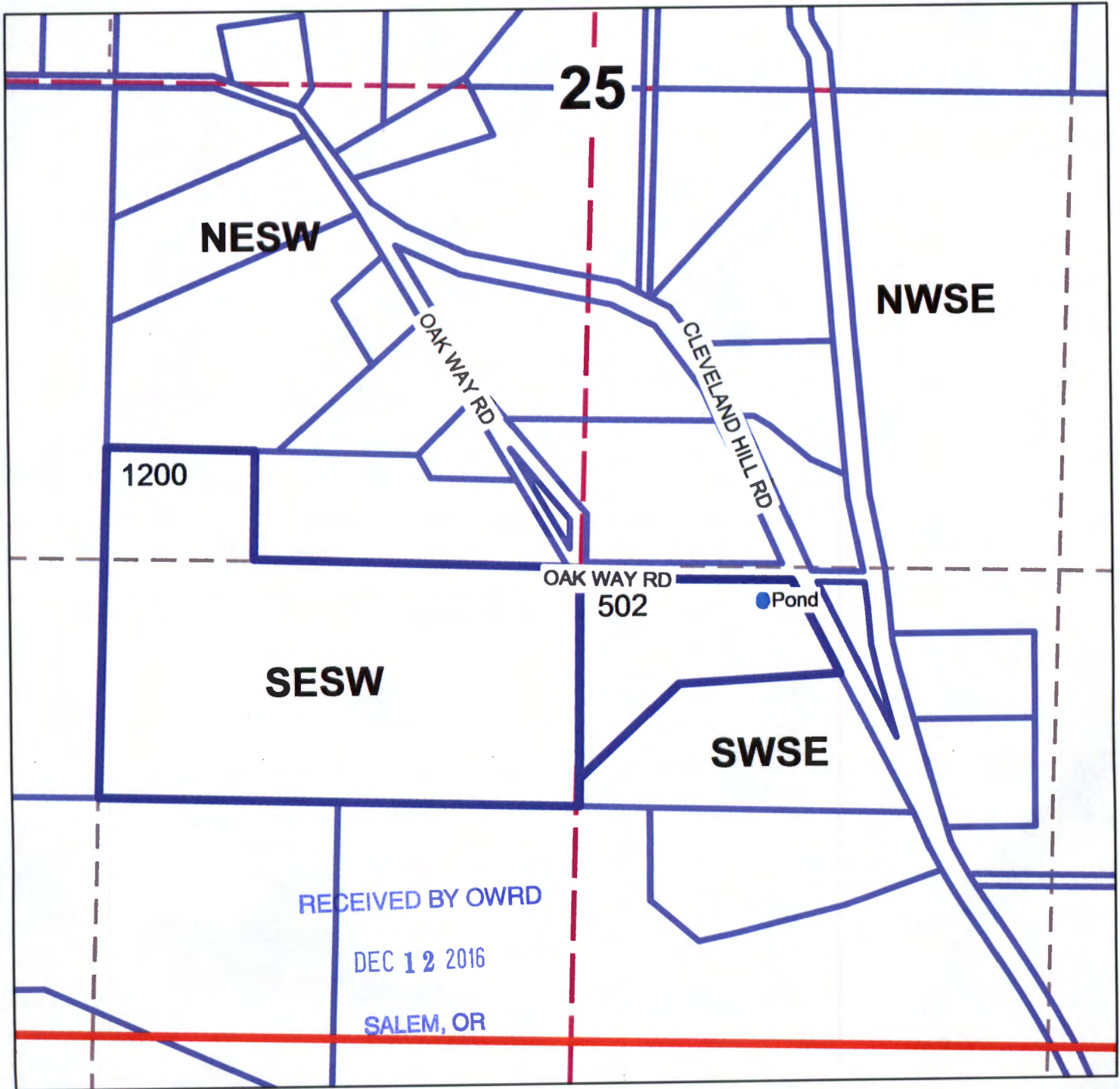


Reservoir Application Map
Samantha Kopp
T.26S. R.7S Section 25
Douglas County
Scale: 1" = 400'

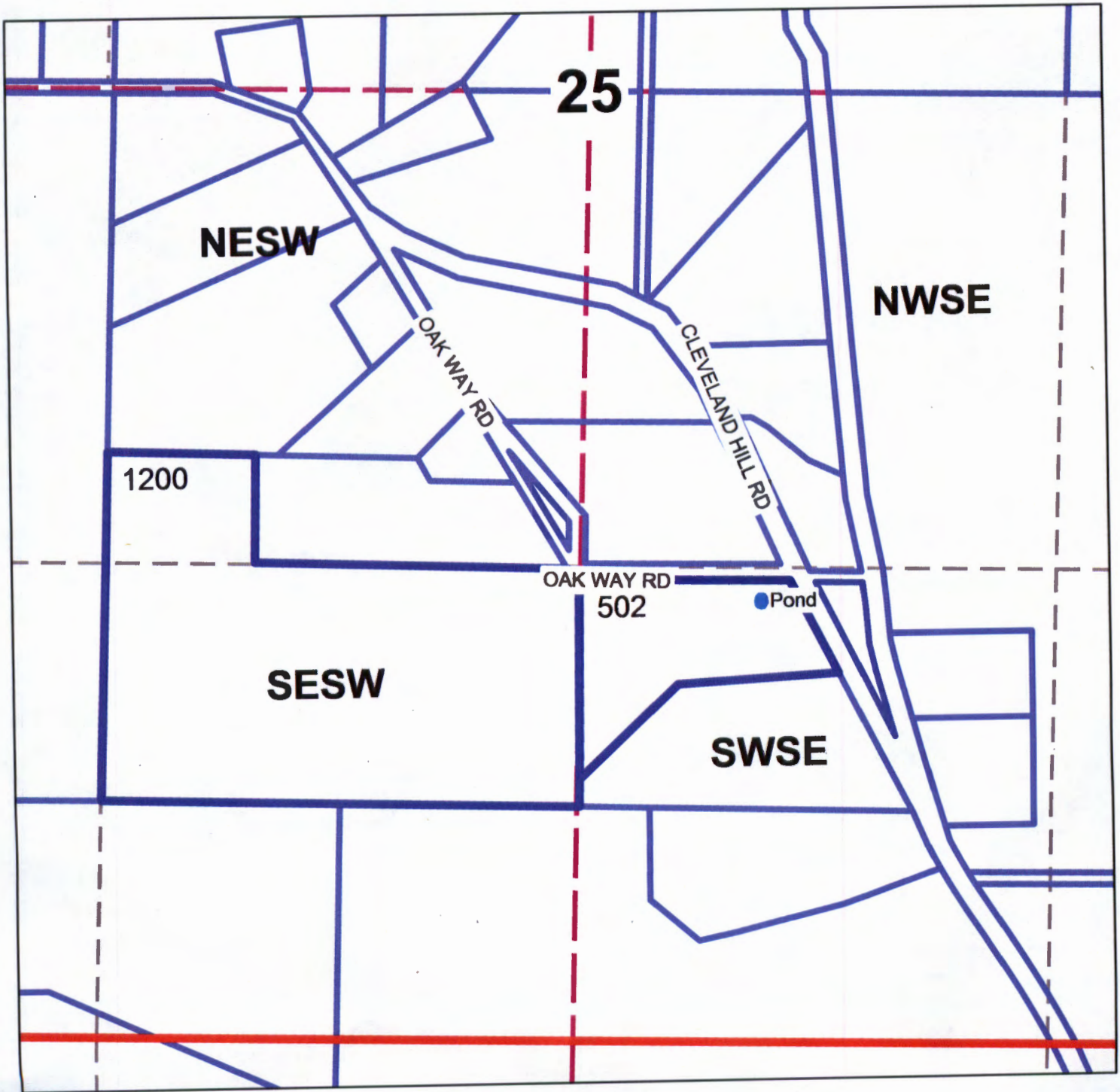


Pond is located 1430 ft. South and 520 ft. East from the center of Section 25.

R-88344



Reservoir Application Map
Samantha Kopp
T.26S. R.7S Section 25
Douglas County
Scale: 1" = 400'



Pond is located 1430 ft. South and 520 ft. East from the center of Section 25.

RECEIVED BY OWID

DEC 12 2016

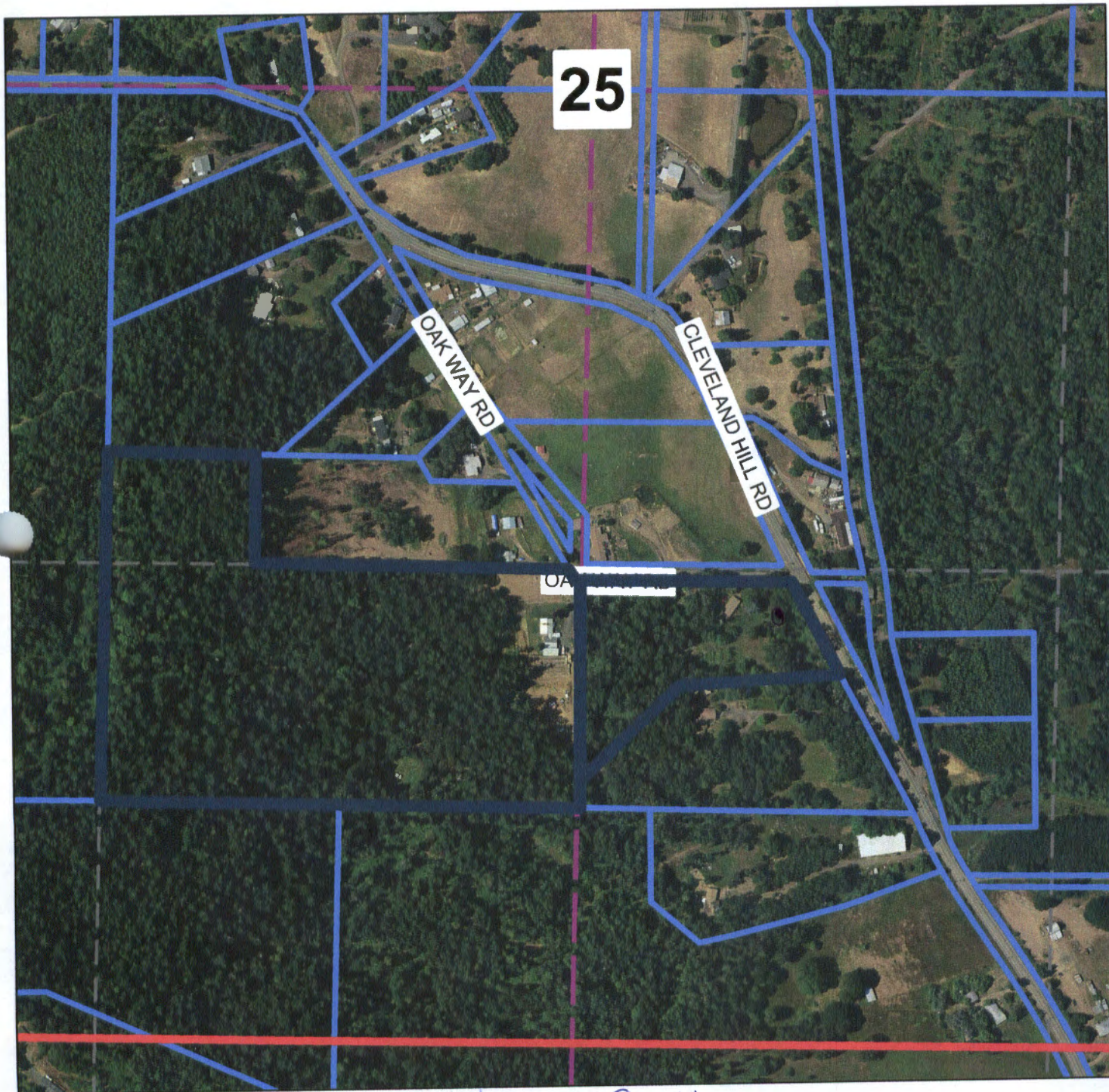
SALEM, OR

R-88344

RECEIVED BY OWRD

DEC 12 2016

SALEM, OR



10' x 20'
3' deep

1430' South
520' East

R-88344