

CALA FARMS - MAP 1

A. PT of Div Located from
NE CORNER SECTION 14
1275 ft SOUTH
1075 ft WEST

SCALE: 1" = 1,320 FEET

PK 9-15-07

Acreage

#1102: 12s-4w-12
SWNW= 2.50 acres
SENW= 13.76 acres

#1100: 12s-4w-12
SWNW= 18 acres
NWSW= 22.9 acres
NESW= 40 acres
SWSW= 8 acres
SESW= 8 acres
SENW= 3 acres

#1400: 12s-4w-12
NWSE= 40 acres
NESE= 35 acres
SWSE= 10 acres
SESE= 9.74 acres

#300: 12s-4w-11
NWSE= 2 acres
NESE= 4.9 acres
SWSE= 32 acres
SESE= 40 acres
SESW= 3 acres

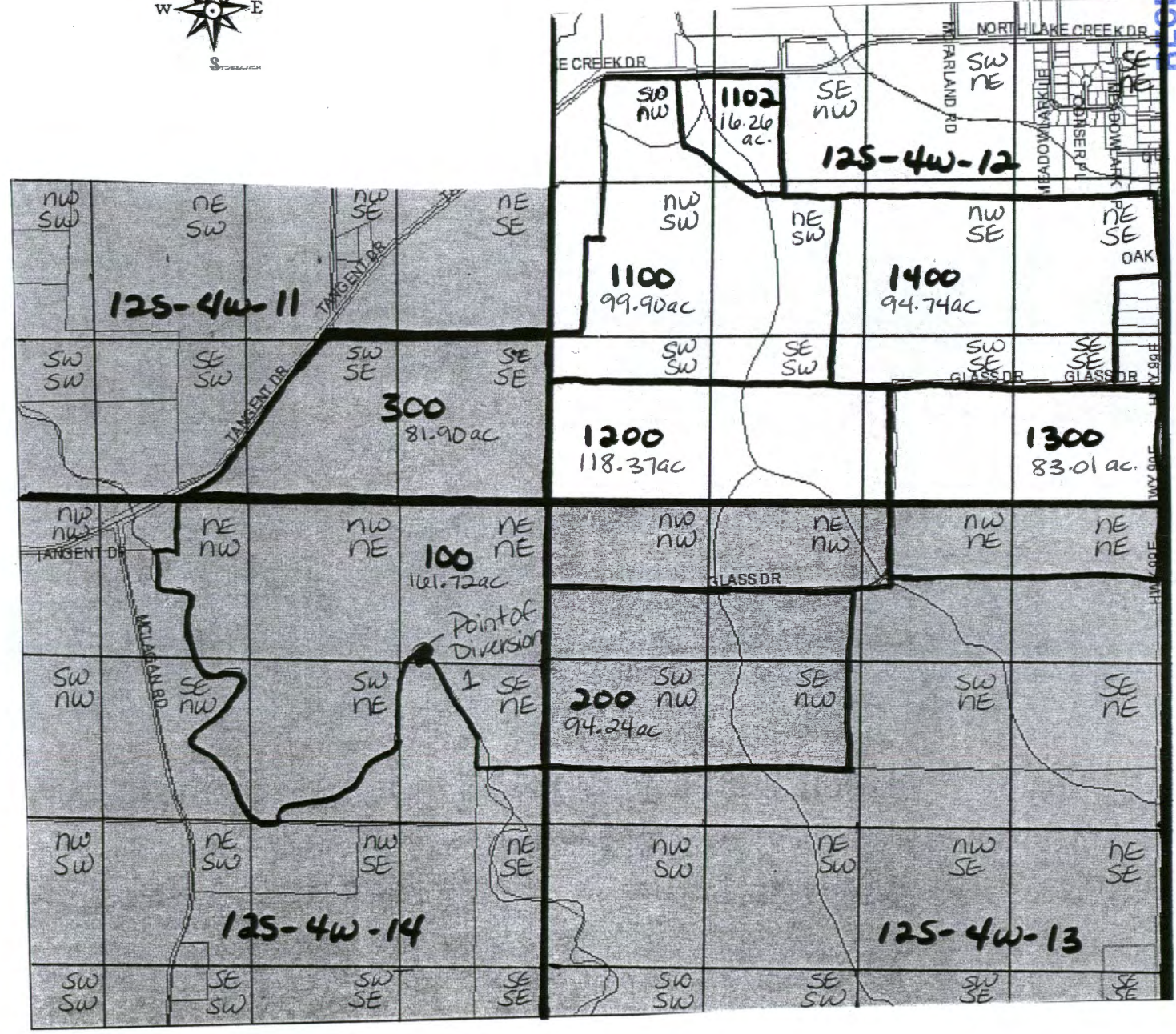
#1200: 12s-4w-12 & 13
SWSW= 32 acres
SESW= 32 acres
SWSE= 10 acres
NWNW= 20 acres
NENW= 20 acres
NWNE= 4.37 acres

#1300: 12s-4w-12 & 13
SWSE= 20 acres
SESE= 32 acres
NWNE= 10.01 acres
NENE= 21 acres

#200: 12s-4w-13
NWNW= 20 acres
NENW= 20 acres
SWNW= 27.12 acres
SENW= 27.12 acres

#100: 12s-4w-14
NENW= 15 acres
NWNE= 40 acres
NENE= 40 acres
SENW= 10 acres
SWNE= 36 acres
SENE= 18.72 acres
NESW= .5 acres
NWSE= 1.5 acres

#300: 12s-4w-14
SWNE= 2 acres
SENE= 15.41 acres
NWSE= 4.5 acres NESE= 3.5 acres



Appno 5-86982

SEP 18 2007

RECEIVED
WATER RESOURCES DEPT
SALEM, OREGON

CALA FARMS - MAP 2

SCALE: 1" = 1,320 FEET



RECEIVED

SEP 18 2007

WATER RESOURCES DEPT
SALEM, OREGON

Acres

#400: 12s-3w-18
SENE= 3.89 acres
SWNW= 7 acres
SENE= 3 acres
NESE= 11 acres
NWSW= 26 acres
NESW= 5 acres

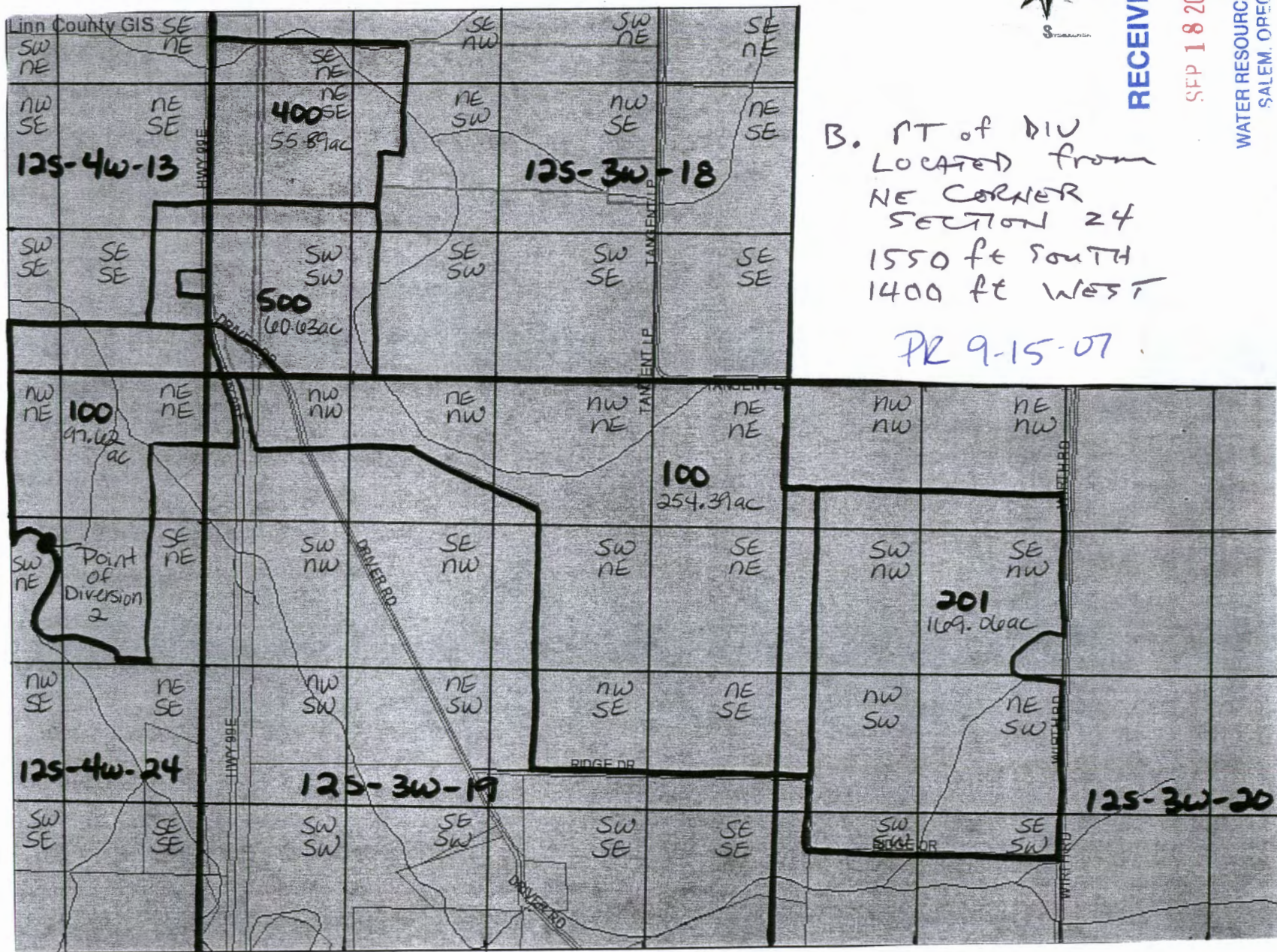
#500: 12s-3w-18
NESE= 2 acres
NWSW= 5.98 acres
SESE= 8 acres
SWSW= 38.65 acres
NESW= 1 acre
SESW= 5 acres

#502: 12s-3w-18
SESE= 1.35 acres

#100: 12s-4w-24
SWSE= 3 acres
SESE= 12 acres
NWNW= 11 acres
NENE= 38 acres
NWNW= 3.5 acres
SWNE= 3.62 acres
SENE= 26 acres
SWSW= .5 acres

#100: 12s-3w-19
NWNW= 14 acres
NENW= 21 acres
NWNW= 39 acres
NENE= 40 acres
SWNE= 26 acres
SENE= 40 acres
NWSE= 18.39 acres
NESE= 40 acres
NWNW= 2 acres
SWNW= 9 acres
NWSW= 5 acres

#201: 12s-3w-20
NWNW= 7.06 acres
NENW= 14 acres
SWNW= 24 acres
SENE= 40 acres
NWSW= 24 acres
NESW= 40 acres
SWSW= 7 acres
SESW= 13 acres



B. PT of DIV
LOCATED FROM
NE CORNER
SECTION 24
1550 ft SOUTH
1400 ft WEST
PR 9-15-07

APP NO 5-86982

CALA FARMS - MAP 3

SCALE: 1" = 1,320 FEET



RECEIVED

SEP 18 2007

WATER RESOURCES DEPT
SALEM, OREGON

Acreage

#400: 12s-3w-20
NWSE= 40 acres
NESE= 40 acres
SWSE= 40 acres
SESE= 40 acres

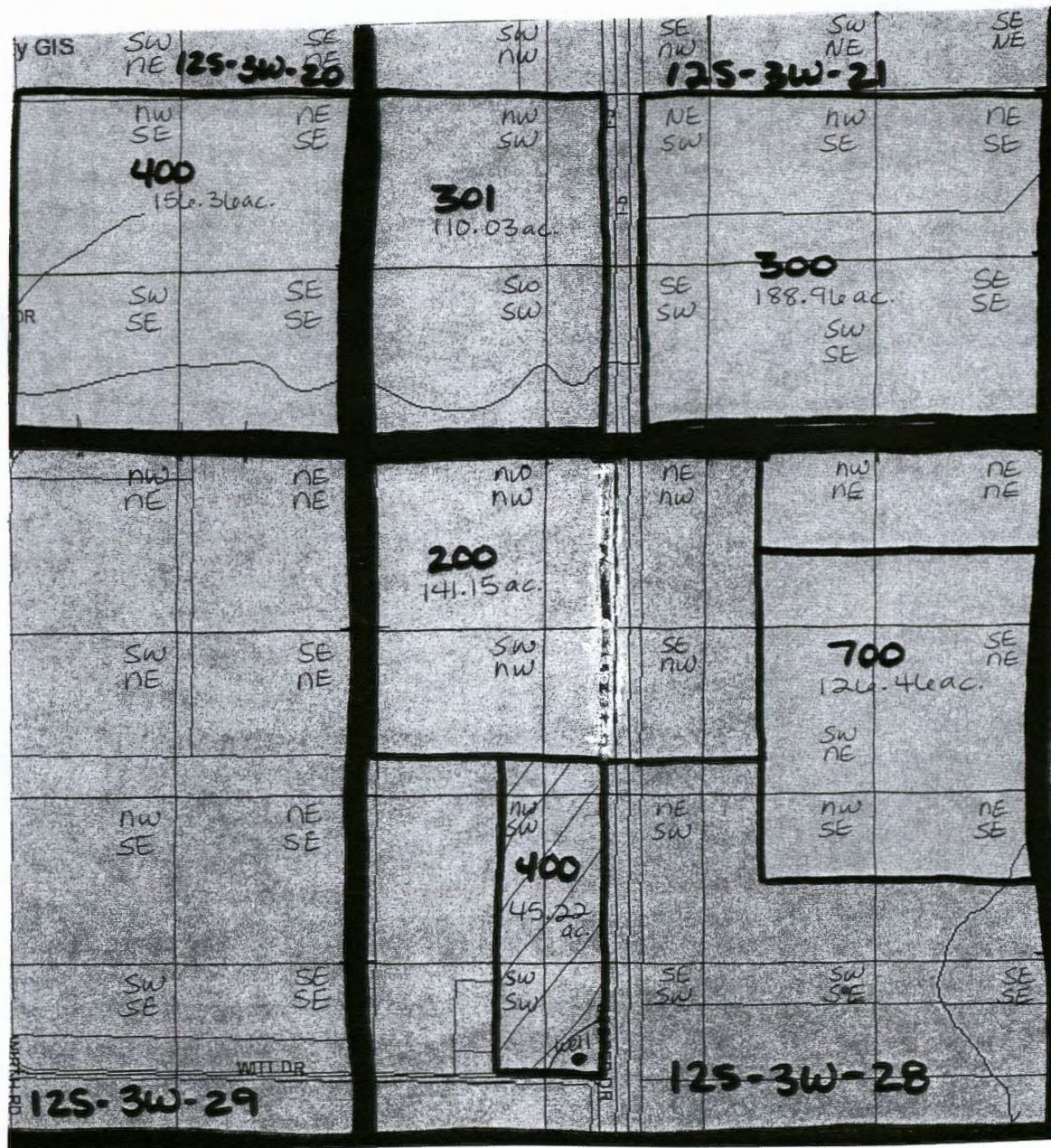
#301: 12s-3w-21
NWSW= 40 acres
SWSW= 40 acres
NESW= 15.03 acres
SESW= 15 acres

#300: 12s-3w-21
NESW= 14.48 acres
NWSE= 40 acres
NESE= 40 acres
SESW= 14.48 acres
SWSE= 40 acres
SESE= 40 acres

#200: 12s-3w-28
NWNW= 40 acres
NENW= 30 acres
NWNW= 10 acres
SWNW= 30 acres
SENW= 24.15 acres
SWNE= 7 acres

#700: 12s-3w-28
NWNE= 10.23 acres
NENE= 20 acres
SWNE= 27 acres
SENE= 40 acres
NWSE= 19 acres
NESE= 10.23 acres

#400: 12s-3w-28
SWNW= 2 acres
SENW= 3.22 acres
NWSW= 10 acres
NESW= 13 acres
SWSW= 7 acres
SESW= 10 acres



= Existing Water Rights

App No 5-86988

CALA FARMS - MAP 4

Acreage

#301: 12s-3w-29
 NWNW= 2.23 acres
 NENW= 3.5 acres

#400: 12s-3w-29
 NWNW= 13.29 acres
 NENW= 20 acres

#500: 12s-3w-29
 NONE

#500: 12s-3w-30
 SWNE= .64 acres
 SENE= 7 acres
 NWSE= 6 acres
 NESE= 7 acres
 SWSE= 8 acres
 SESE= 9 acres

#502: 12s-3w-29
 NESW= NONE
 SESW= *20.1 acres
 NENW= *8 acres

*Additional Acreage

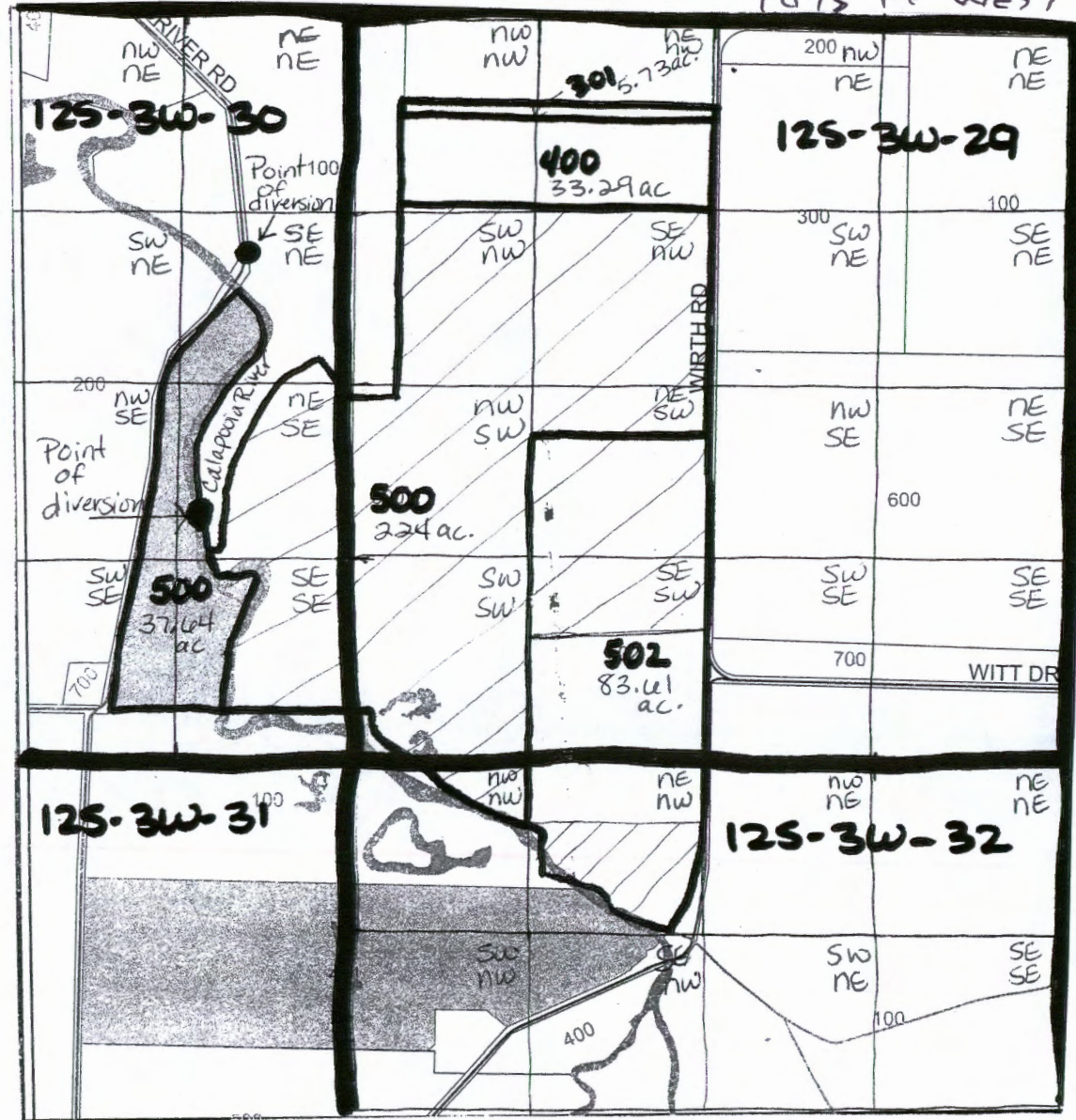
 = Existing Water Rights

DIV. PTS. LOCATED
 from NE CORNER
 SECTION 30

SCALE: 1" = 1,320 FEET

C. 1620 ft SOUTH
 800 ft WEST

D. 3590 ft SOUTH
 1075 ft WEST



RECEIVED

9-15-07
 SEP 18 2007
 WATER RESOURCES DEPT
 SALEM, OREGON

CALA FARMS - MAP 5

SCALE: 1" = 1,320 FEET

RECEIVED



= Existing Water Rights

SEP 18 2007



PR
9-15-07

WATER RESOURCES DEPT
SALEM, OREGON

PT of DIV(S) LOCATED
from CENTER
SECTION 32

E. 1375 ft NORTH
300 ft WEST
F. 2600 ft SOUTH
775 ft WEST

Acreage

#600: 12s-4w-36
SWSE= 30.68 acres
NWNE= 18 acres
SESE= 38 acres
NENE= 30 acres

#500: 13s-3w-6
NWNW= 15.58 acres

#401: 12s-3w-32
NWNE= 3 acres
NENE= 11 acres
SWNE= 9 acres
SENE= 31 acres
NWNW= *NONE
NENW= *15.04 acres
SWNW= *NONE
SENW= *4.9 acres
*Additional Acreage

#400: 12s-3w-32
SWNW= 5 acres
SENW= 8.88 acres

#601: 12s-3w-31
SESW= 16.27 acres
SWSE= 16 acres

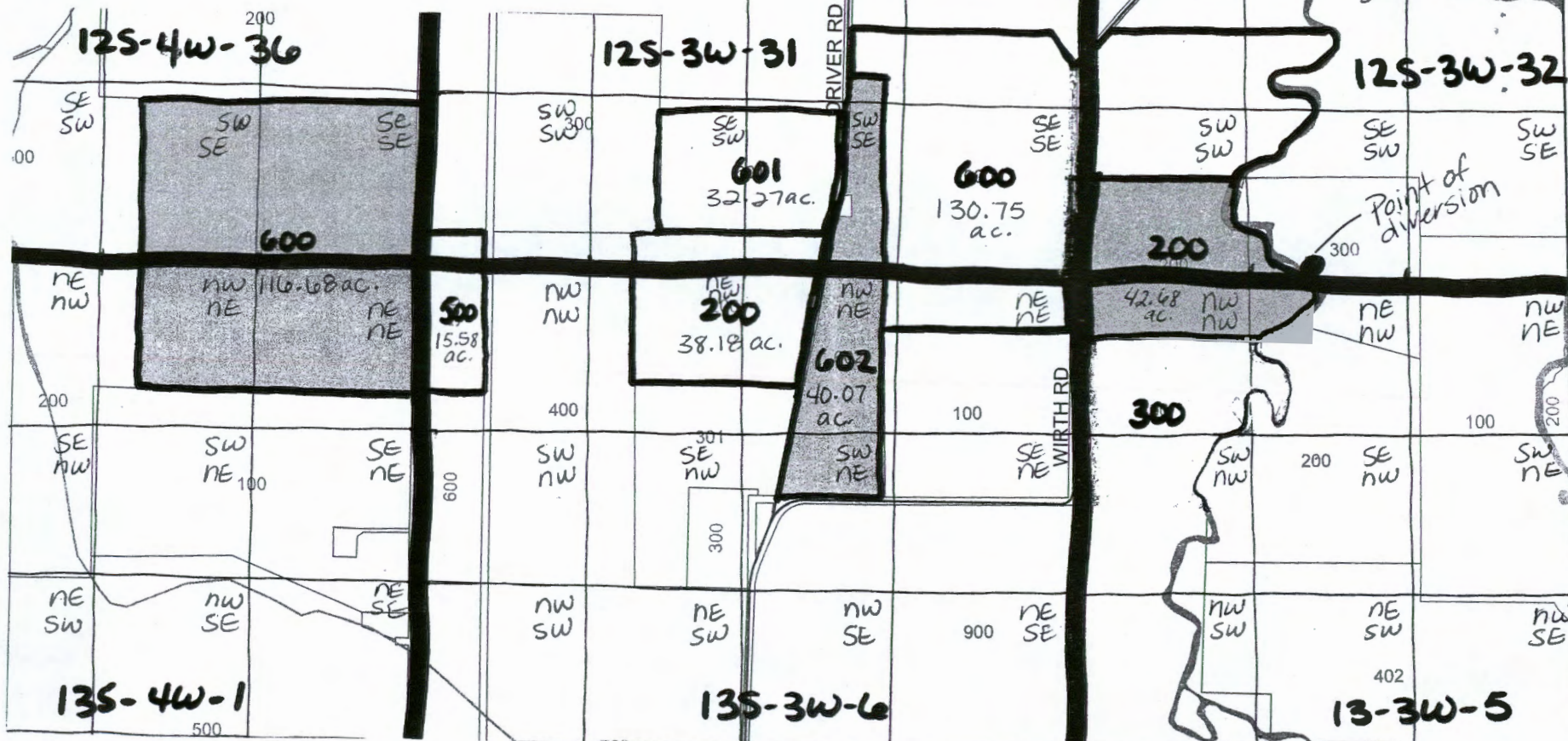
#200: 13s-3w-6
SESW= 8 acres
SWSE= 4 acres
NENW= 15 acres
NWNE= 11.18 acres

#602: 13s-3w-6
SWSE= 10.07 acres
NWNE= 20 acres
SWNE= 10 acres

#600: 12s-3w-31
NWSE= 8 acres
NESE= 25 acres
SWSE= 7 acres
SESE= 40 acres
NWNE= 1 acre
NENE= 8 acres
NWSW= 23 acres
NESW= 5 acres
SWSW= 10 acres
SESW= 3.75 acres

#200: 12s-3w-32
SWSW= 21 acres

SESW= 1.5 acres
NWNW= 3.5 acres
NENW= 15.68 acres



S-210982

CALA FARMS - MAP 6

PTS of DIV LOCKED from CENTER SECT. 17

Acreage:

#203: 13s-3w-7
 NENW= 8.46 acres
 NWNE= 39.54 acres
 NENE= 1.68 acres
 SWNE= 12.87 acres
 SENW= .13 acres

#202: 13s-3w-7
 SWNE= 18.65 acres
 SENE= 34.35 acres
 NENE= 11 acres
 NWSE= 4.43 acres
 NWNE= .46 acres

#200: 13s-3w-7
 SWNE= 9.35 acres
 NWSE= 36 acres
 SWSE= 40 acres

#400: 13s-3w-7
 NWSW= 8.33 acres
 NESW= 20 acres

#500: 13s-3w-18
 NWSW= 20 acres
 NESW= 7.22 acres

#600: 13s-3w-18
 SWSW= 8.35 acres
 SESW= 22 acres

#400: 13s-3w-17
 SESE= 20 acres
 SWSW= 19.87 acres
 NENE= 40 acres
 SESE= 40 acres
 SWNW= 40 acres

#1000: 13s-3w-18
 NWSE= 18 acres
 SWSE= 18 acres
 NWNE= 20.47 acres
 NESE= 6.63 acres

#502: 13s-3w-17
 NESE= *30.25 acres
 NWSW= *23.9 acres
 NESW= *37.5 acres
 SWSW= *5 acres
 SESW= *2.03 acres
 SESE= *NONE

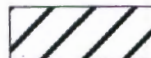
#500: 13s-3w-18
 SESE= 10.51 acres

#501: 13s-3w-17
 NESE= 3.72 acres
 SESE= 26 acres
 SWSW= *9.5 acres
 SESW= *22.63 acres

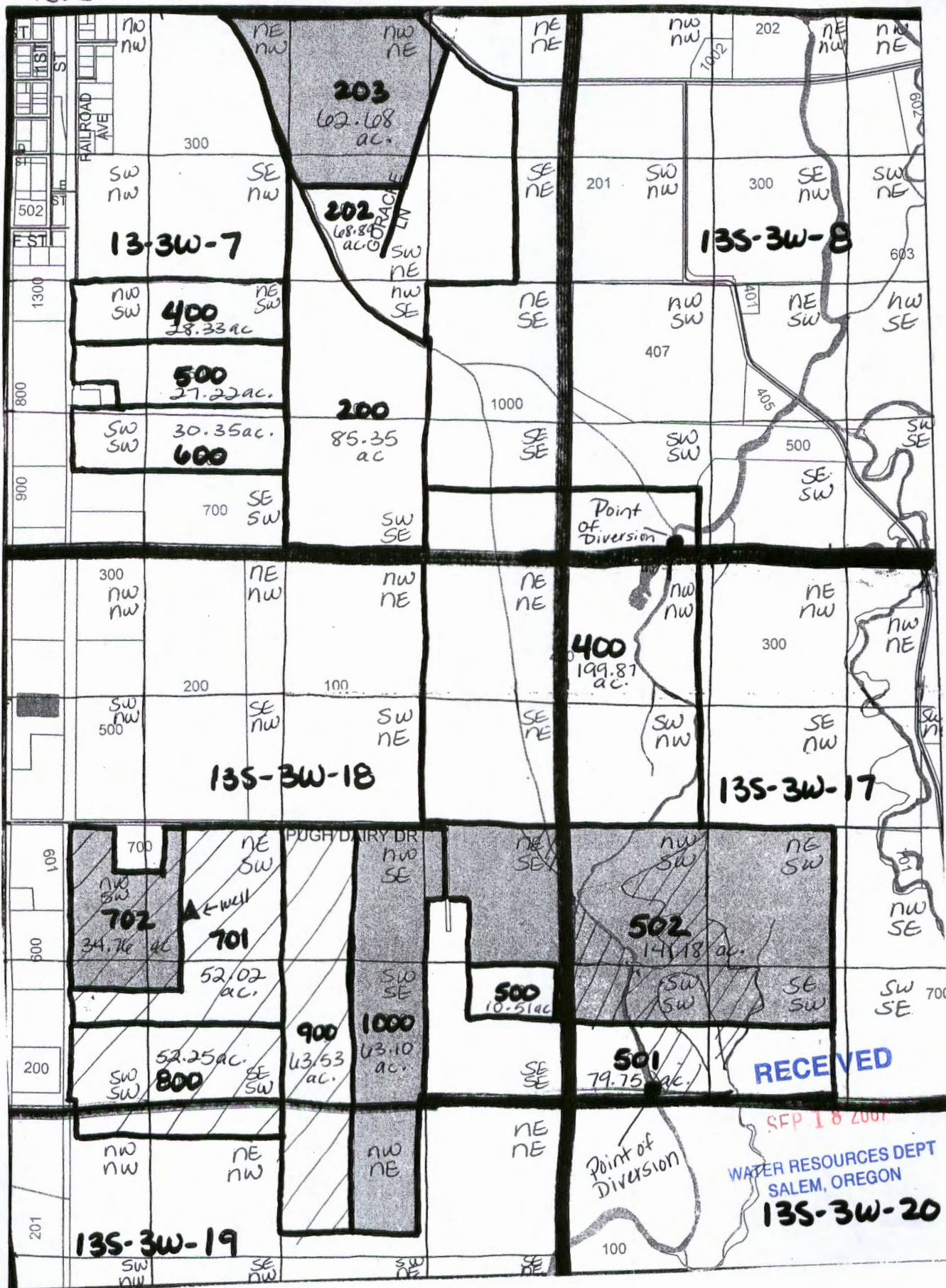
* = Additional Acreage

2700 ft NORTH
 1650 ft WEST
 2575 ft SOUTH
 1875 ft WEST

SCALE: 1" = 1,320 FEET



= Existing Water Rights



PR
 9-15-07

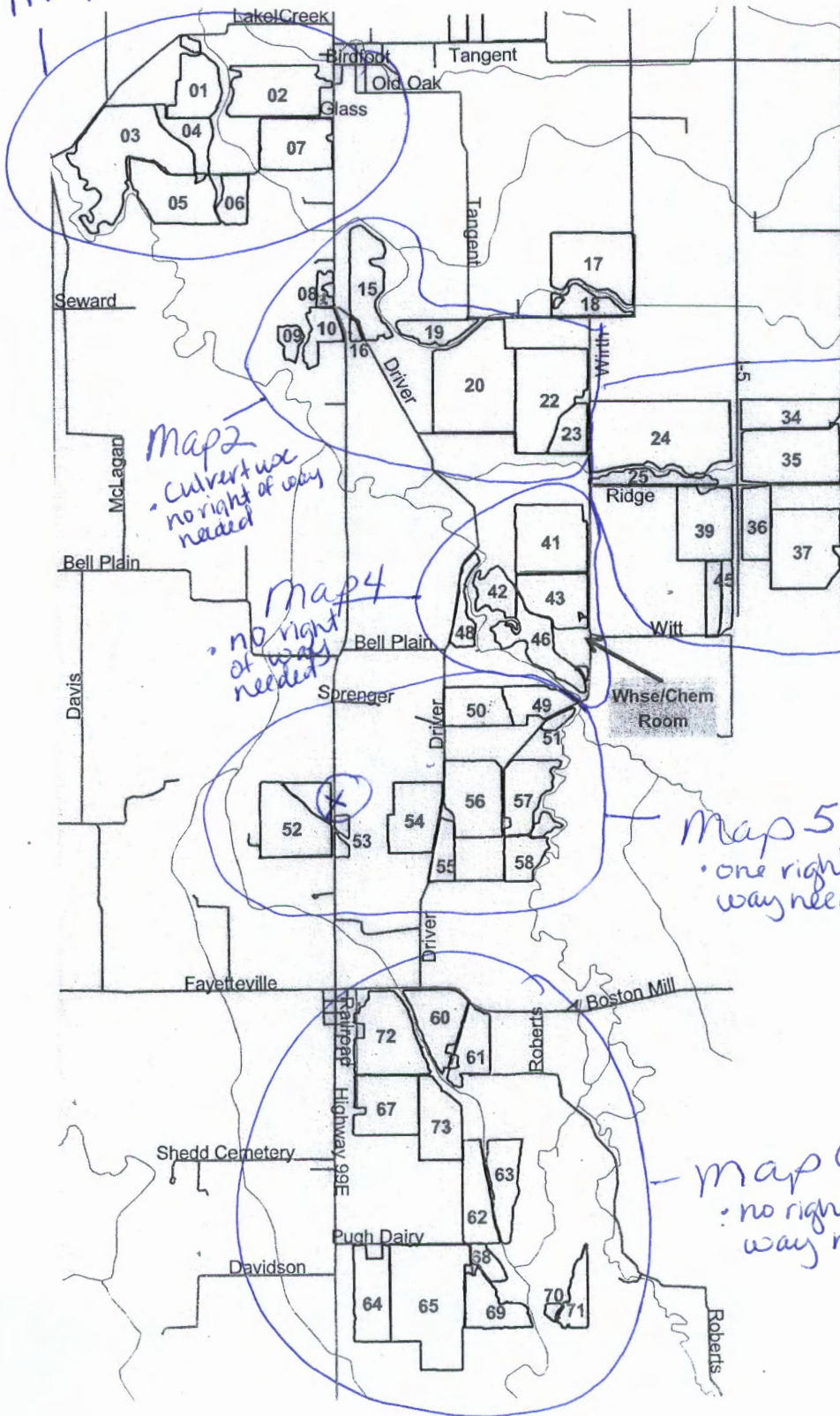
S-86982

SEP 18 2007
 WATER RESOURCES DEPT
 SALEM, OREGON
13S-3W-20

CALA FARMS - OVERVIEW



Map 1 - no right of ways needed



Map 2
- culvert use
no right of way
needed

Map 3
- culvert use
no right of way
needed

Map 4
- no right
of way
needed

Map 5
- one right of
way needed

Map 6
- no right of
way needed

APP NO S-86982

RECEIVED

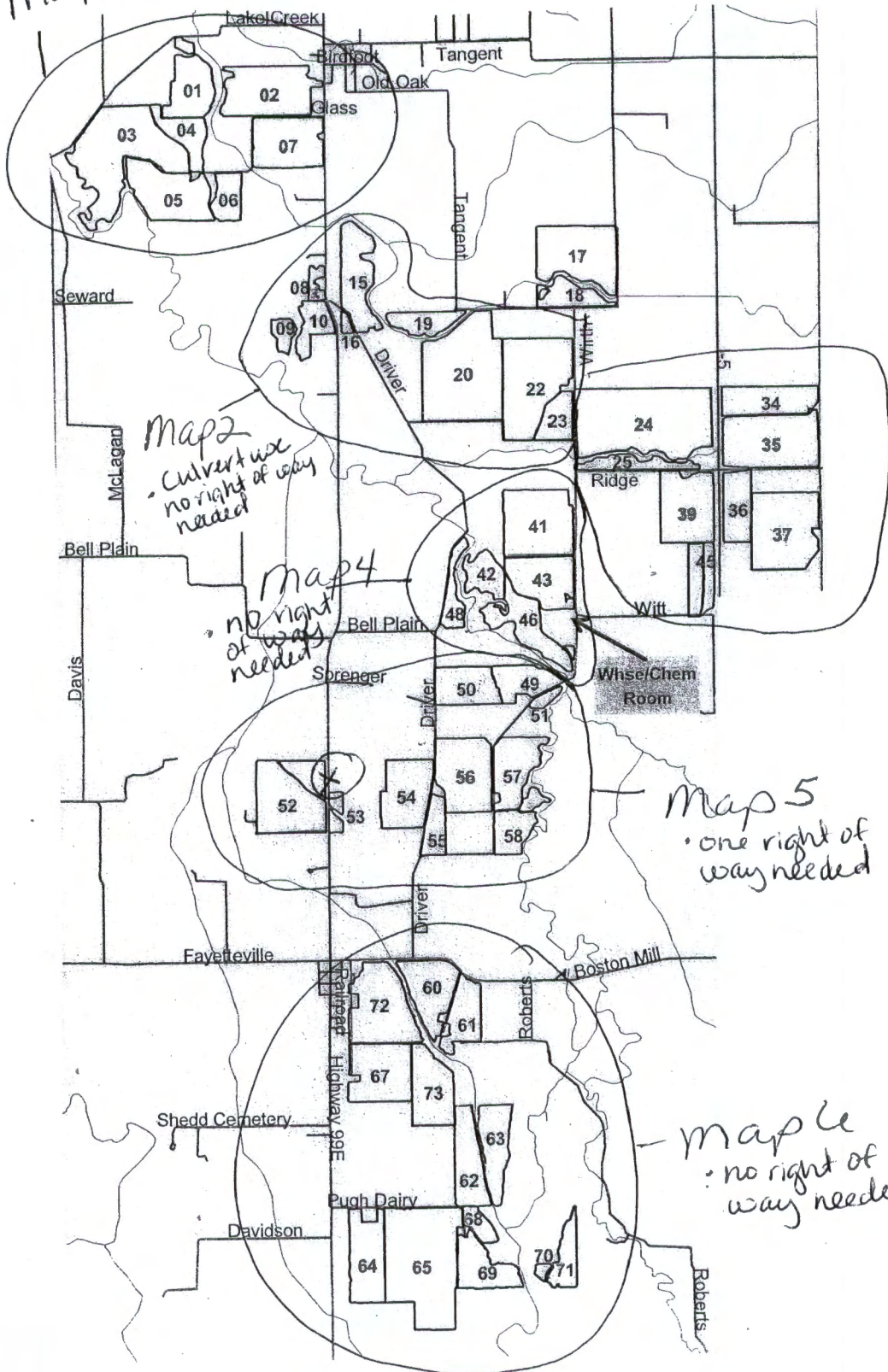
SEP 18 2007

WATER RESOURCES DEPT
SALEM, OREGON

CALA FARMS - OVERVIEW



Map 1 - no right of ways needed



Map 2 - Culvert use no right of way needed

Map 4 - no right of ways needed

Map 3 - culvert use no right of way needed

Map 5 - one right of way needed

Map 6 - no right of way needed

App no S-8698a

RECEIVED

SEP 18 2007

WATER RESOURCES DEPT
SALEM, OREGON

FINAL PROOF SURVEY

IN THE W 1/2 OF SECTION 28, T.12S., R.3W., W.M.
LINN COUNTY, OREGON

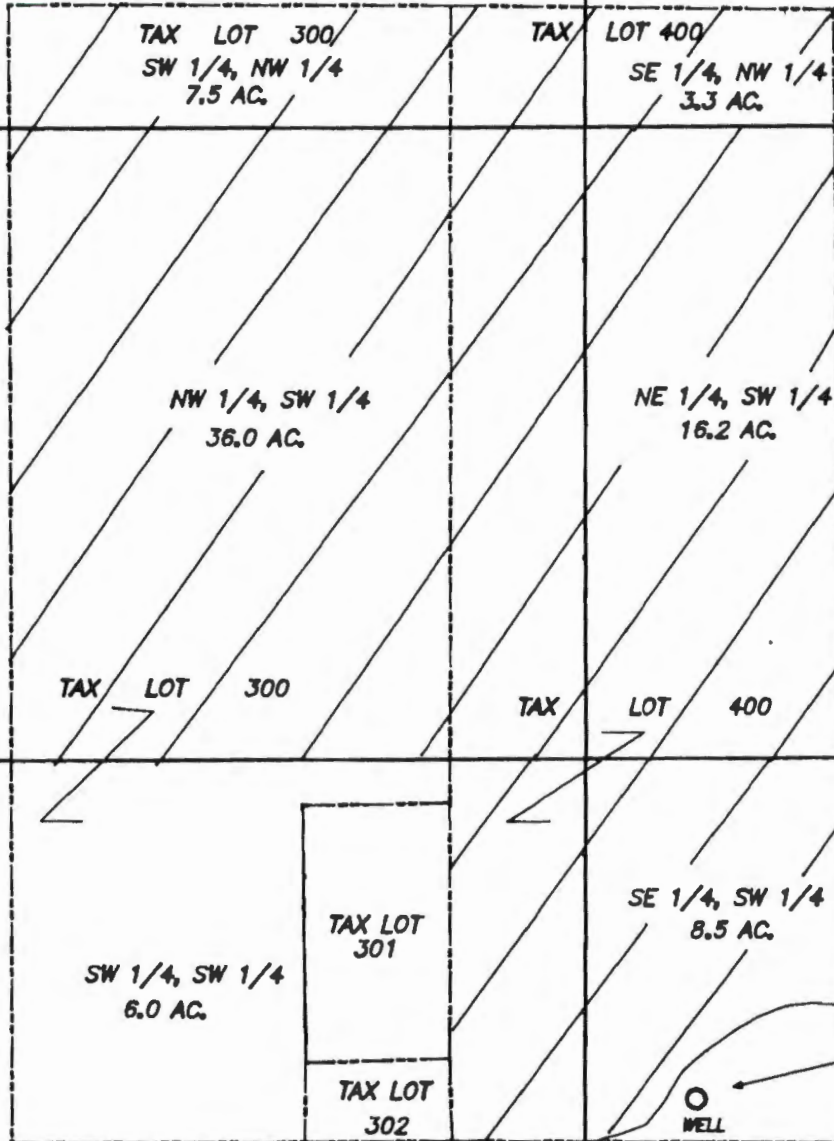
APPLICATION G-12916, PERMIT G-11738

IN THE NAME OF **CALA FARMS INC.**

OCTOBER 10, 2002



SCALE 1 INCH = 400 FEET



- MONUMENT OF RECORD
- AREA TO IRRIGATE, TOTAL 77.5 ACRES
- SUBDMISION LINES
- SECTION LINES
- TAX LOT LINES
- D.L.C. LINE

NARRATIVE

THIS MAP WAS DIGITIZED FROM A DIGITAL ORTHROPHOTO FROM THE LINN COUNTY SURVEYOR'S OFFICE TAKEN IN THE SPRING OF 2000. THE WELL WAS PHOTO IDENTIFIED AS WELL AS OTHER OBSERVATIONS TO ASSURE THE INFORMATION WAS CURRENT.

POINT OF DIVERSION

LOCATED 180' NORTH AND 420' WEST FROM THE N.E. CORNER OF D.L.C. NO. 48

N.E. CORNER
ISAAC ROBERTS
D.L.C. NO. 48

28 28 SECTION
32 33 CORNER

THIS MAP IS FOR THE PURPOSE OF OBTAINING A WATER RIGHT AND IS NOT INTENDED TO PROVIDE LEGAL DIMENSIONS FOR LOCATIONS OF PROPERTY BOUNDARIES

PREPARED BY:
L. W. HUNNEMULLER
3085 NE LANCASTER
CORVALLIS, OR 97330
PHONE: (541) 757-7814

