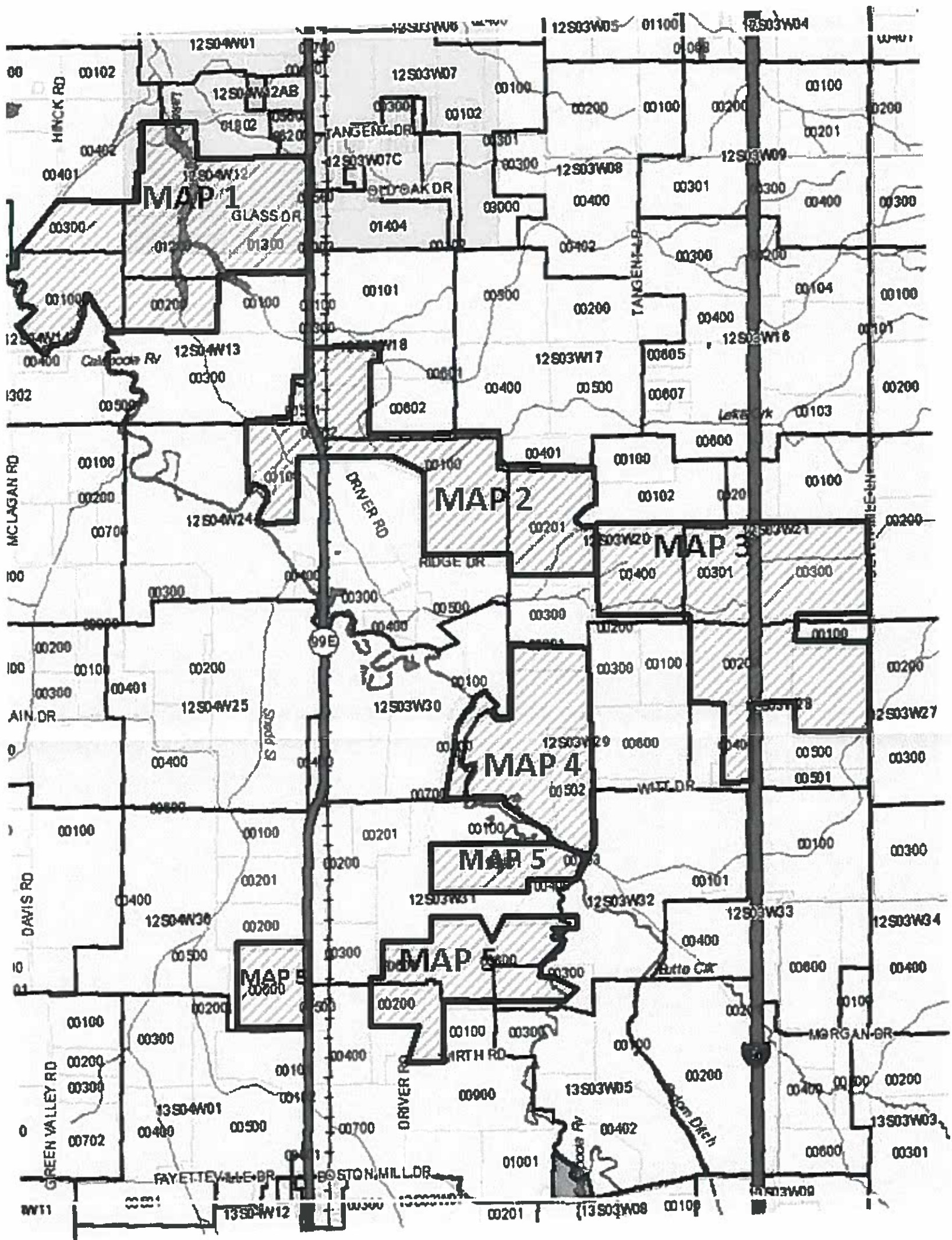


Revised Maps
Rec'd 9/24/10
Via Email

CALA FARMS – APPLICATION #S-86982 OVERVIEW (Total Acres=2,726.86)

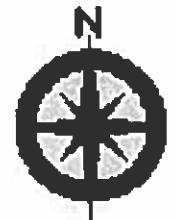


Aug 20, 2010

CALA FARMS – APPLICATION #S-86982 MAP 1 (Total Acres = 750.14)

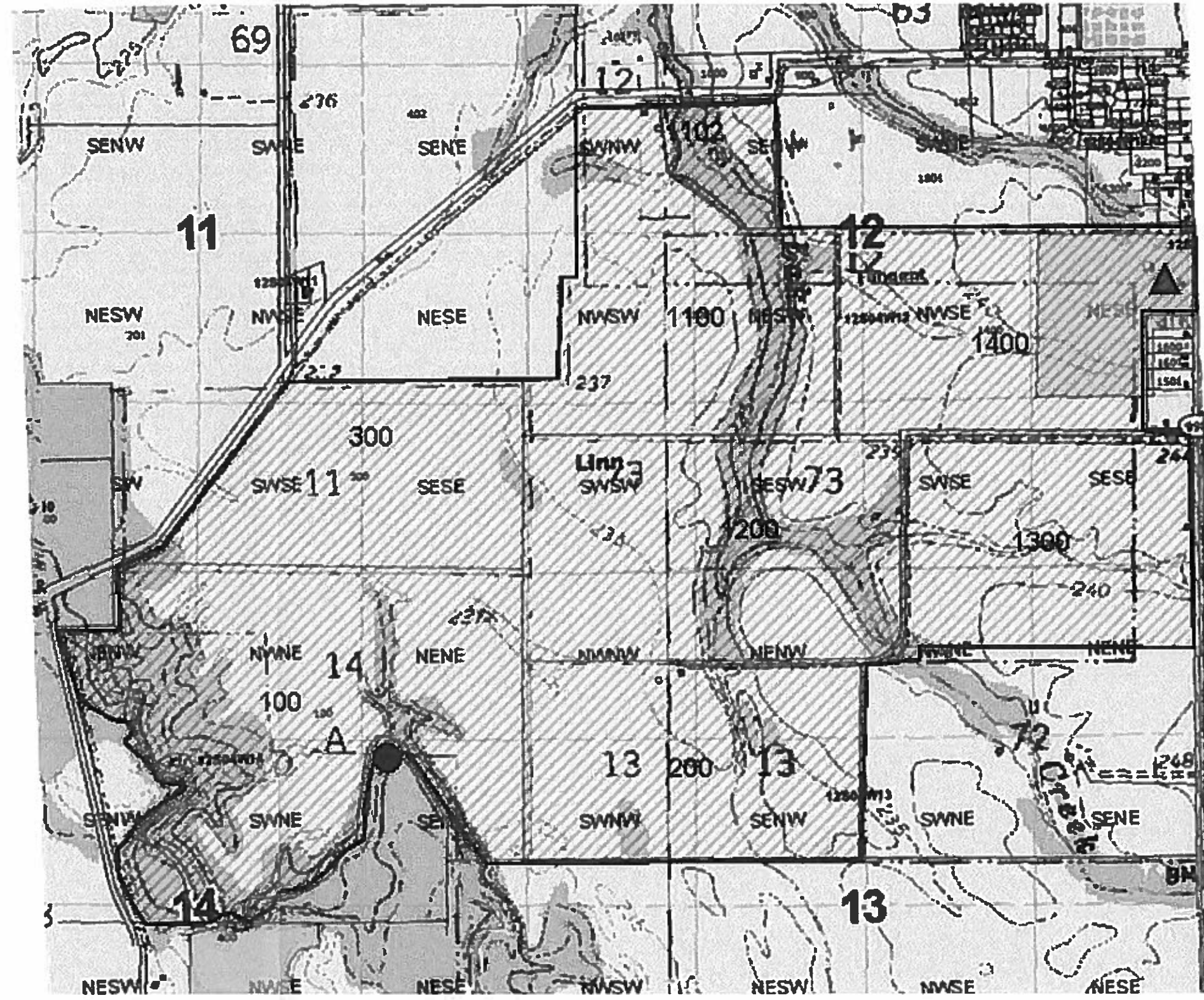
POINT OF DIVERSION A: 1275 FT SOUTH - 1075 FT WEST FROM NE CORNER OF SECTION 14

1"=1,320 Feet



 = Proposed Surface Rights  = Existing Rights (Well)  = Point of Diversion

- 12S4W-12-LOT1102
- SWNW 3
- SEW 13.26
- 12S4W-12-LOT1100
- SWNW 16
- SEW 4
- NWSW 30.9
- NESW 36
- SWSW 7
- NESW 6
- 12S4W-12-LOT1400
- SESW 1
- NESW 4
- NWSE 40
- NESE 36
- SESE 6.74
- SWSE 6
- NESW 1
- 12S4W-12-LOT1300
- NENE 14.01
- SWSE 26
- SESE 32
- NWNE 11
- 12S4W-12-LOT1200
- SESE .5
- NENE .37
- SWSW 33
- SESW 33
- SWSE 8
- NWNE 5.5
- NENW 19
- NWNW 19
- 12S4W-11-LOT 300
- NWSE 2
- NESE 4.9
- SWSE 32
- SESW 3
- SESE 40
- 12S4W-13-LOT 200
- SENE 1.24
- NENE .5
- NWNW 21
- NENW 21
- SWNW 25.25
- SEW 25.25
- 12S4W-14-LOT100
- NENW 23
- NWNE 40
- NENE 39.13
- SEW 8
- SWNE 35
- SENE 16.59



Aug 20, 2010

CALA FARMS – APPLICATION #S-86982 MAP 2 (Total Acres = 632.53)

POINT OF DIVERSION B: 2500 FT SOUTH – 1000 FT WEST FROM NE CORNER OF SECTION 24



1" = 1,320 Feet

12S3W-18-LOT 400
 SWNW 7.89
 SENW 3
 NWSW 35
 NBSW 10

12S3W-18-LOT 500
 NESE 1.63
 NWSW 5
 SESE 6
 SWSW 38
 NBSW 1
 SESW 9

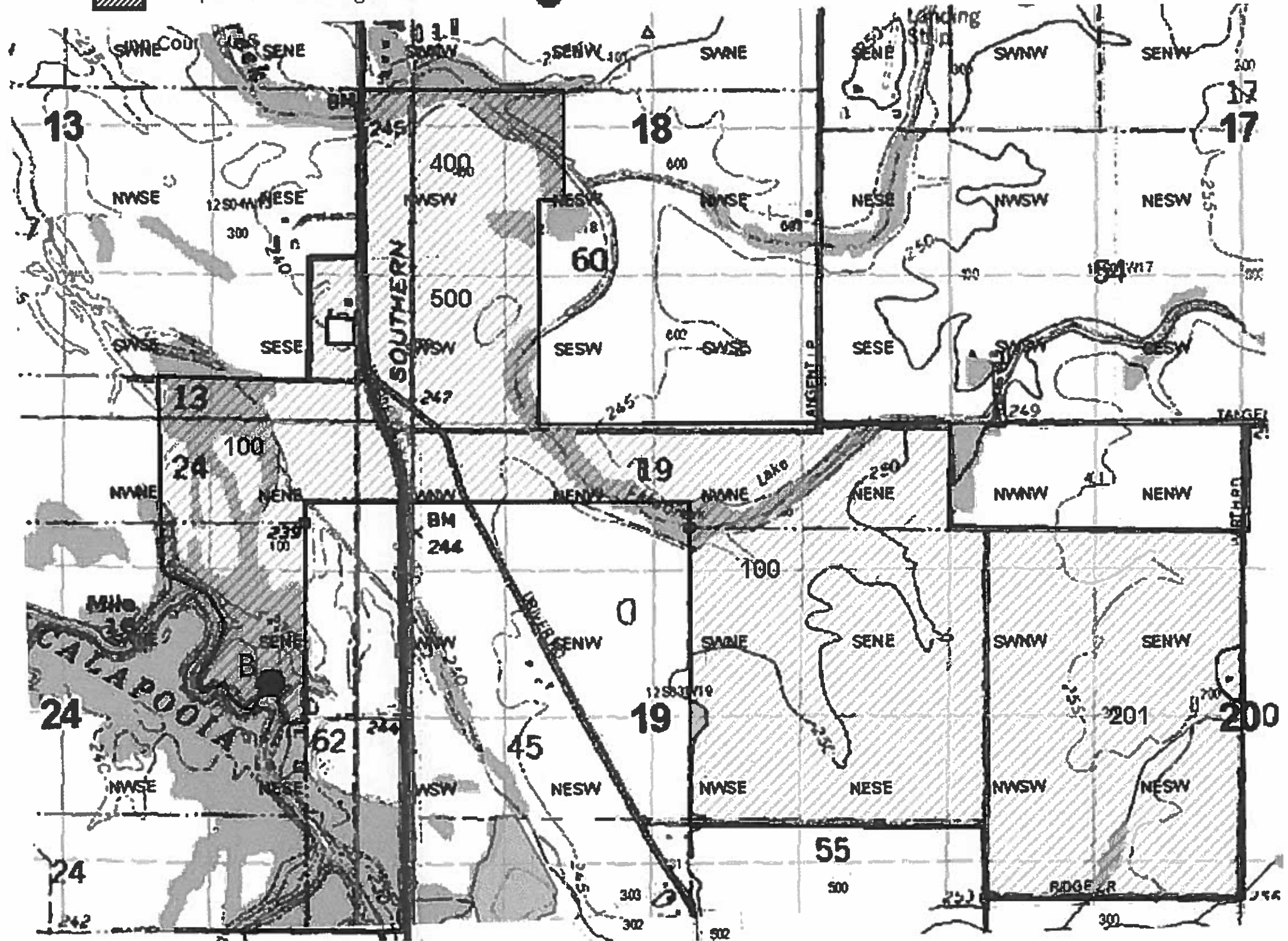
12S4W-24-LOT 100
 SWSE 5
 SESE 13.24
 NWNE 15
 NENE 26.02
 NWNW 5.74
 SWNE 4
 SENE 28
 SWSW .62

12S3W-19-LOT 100
 NWNW 18
 NENW 19
 NWNE 37
 NENE 40
 SWNE 30
 SENE 40
 NWSE 23.39
 NESE 30
 NWNW 2
 SWNW 10
 NWSW 5

12S3W-20-LOT 201
 NWNW 3.06
 SWNW 23
 SENW 36.32
 NESW 40
 SESW 5
 SWSW 3.06
 NENW 10.28
 NWSW 33
 SESW 10.28

 = Proposed Surface Rights

 = Point of Diversion



Aug 20, 2010

CALA FARMS – APPLICATION #S-86982 MAP 3 (Total Acres = 764.47)

NO POINT OF DIVERSION

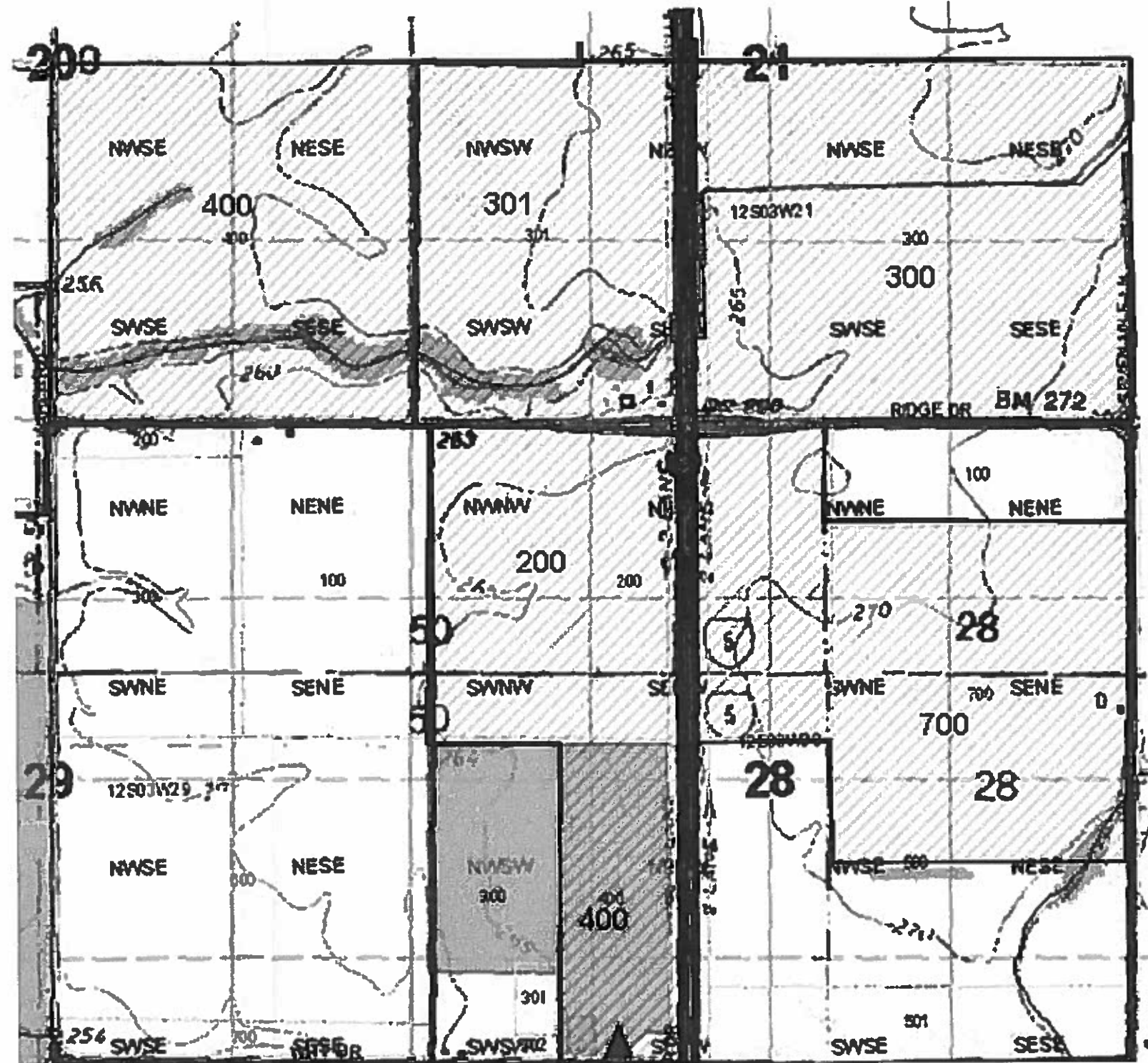


1" = 1,320 Feet

 = Proposed Surface Rights

 = Existing Rights (Well)

- 12S3W-20-LOT 400
- NWSE 40
- NESE 38
- SWSE 40
- SESE 38
- NESW .18
- NESW .18
- 12S3W-21-LOT 301
- NWSW 40
- NESW 15.01
- SWSW 40
- SESW 15.02
- 12S3W-21-LOT 300
- NESW 14.49
- NWSE 40
- NESE 40
- SESW 14.48
- SWSE 40
- SESE 40
- 12S3W-28-LOT 200
- NWNW 35
- NENW 33
- SWNW 26
- SENW 29.15
- NWNE 10
- SWNE 8
- 12S3W-28-LOT 700
- NWNE 10
- NENE 17
- SWNE 27.29
- SENE 40
- NWSE 11.17
- NESE 21
- 12S3W-28-LOT 400
- SWNW 1.5
- SENW 3.3
- NWSW 7
- NESW 16.2
- SWSW 5
- SESW 8.5



CALA FARMS – APPLICATION #S-86982 MAP 4 (Total Acres = 76.66)

FROM NE CORNER OF SECTION 30 -POINT OF DIVERSION C: Located 1800 FEET SOUTH – 600 FEET WEST
-POINT OF DIVERSION D: Located 3900 FEET SOUTH – 1250 FEET WEST



1" = 1,320 Feet

 = Proposed Rights  = Existing Rights  = Point of Diversion

12S-3W-29-LOT 301

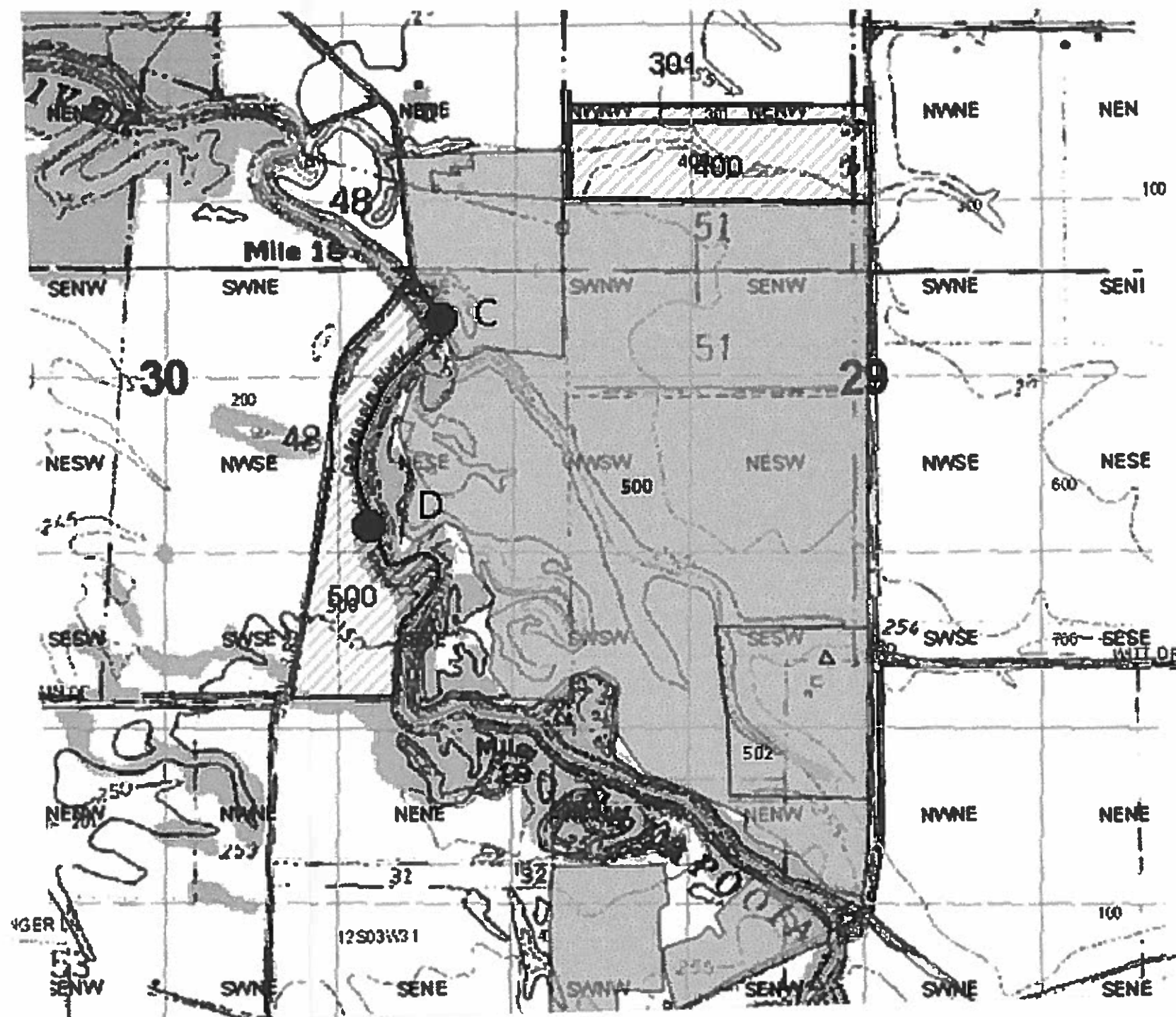
NWNW2
NENW3.5
NWNE .23

12S-3W-29-LOT 400

NWNW12
NENW20
NWNE1.29

12S-3W-30-LOT 500

SWNE .64
SENE 7
NWSE 4
NESE 8
SWSE 7
SESE 11



Aug 20, 2010

12S-3W-36-LOT600
SWSE 28.68
SESE 40
NWNE 18
NENE30

12S-3W-31-LOT401
NWNE3
SWNE 12
NENE11
SENE31.44
NENW 13
SENW 5
SWNW 10
NWNW3.7

12S-3W-31-LOT400
SWNW5
SENW 8.88

12S-3W-31-LOT601
SESW 10.27
SWSE 22

12S-3W-6-LOT1100
NENE 6.10
SWSE 3
NWNE 25
SWNE 6

12S-3W-31-LOT600
NWSE6
NESE 20
SWSE 12
SESE 40
NWNE .75
NENE3
NWSW 20
SWSW 19
NESW 7
SESW 3

13S-3W-5-LOT200
SWSW 20
NWNW 16
NENW 4
SESW 2.68
13S-3W-5-LOT500
SWSW 25.8
NWNW 13

13S-3W-6-LOT200
NENW 23
SESW 3.18
NWNE 9
SWSE 3

CALA FARMS – APPLICATION #S-86982 MAP 5 (Total Acres = 503.06)

FROM NE CENTER OF SECTION 31 –
POINT OF DIVERSION E: 1320 FT SOUTH – 2000 FT EAST
POINT OF DIVERSION F: 5280 FT SOUTH – 1900 FT EAST



1" = 1,320 Feet

 = Proposed Surface Rights  = Existing Rights  = Point of Diversion

