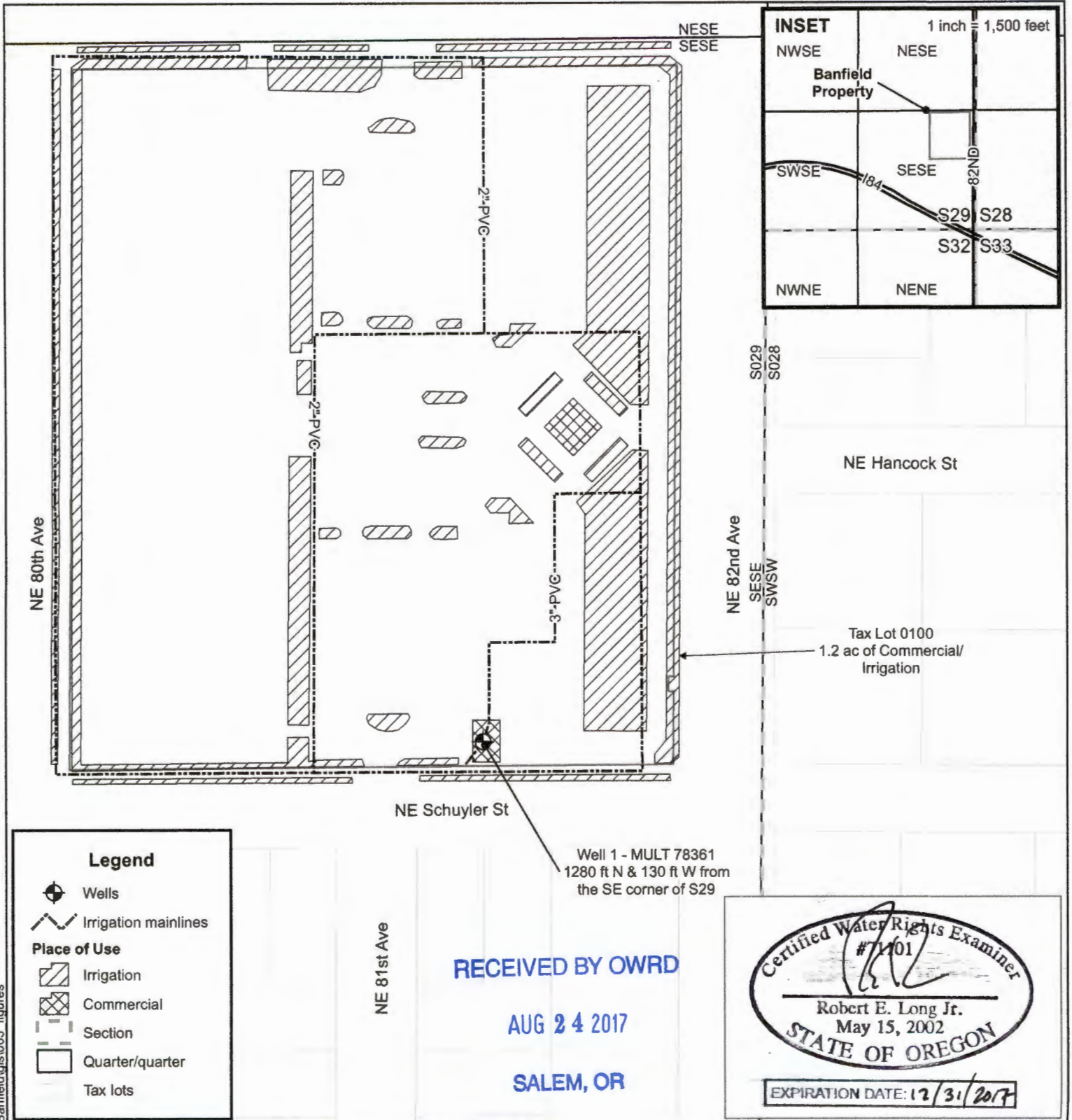


Application for Groundwater Water Right

SE1/4, SE 1/4, Section 29
 Township 1N, Range 2E, W.M.
 Commercial/Irrigation Use: 1.2 Acres



Legend

- Wells
- Irrigation mainlines
- Place of Use**
- Irrigation
- Commercial
- Section
- Quarter/quarter
- Tax lots

RECEIVED BY OWRD
AUG 24 2017
SALEM, OR

Certified Water Rights Examiner
 #71101

 Robert E. Long Jr.
 May 15, 2002
STATE OF OREGON
 EXPIRATION DATE: 12/31/2017

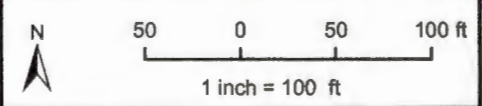
C:\001_CWM_Projects\1623001_Banfield\figs\003_figures

CWM-H2O
 Complete Water Management

1319 MLK Jr Blvd, Suite 204
 Portland, Oregon 97214
 (503) 893-5937

This map is not intended to provide legal dimensions or property ownership lines. The scale of this map, 1 in = 100 ft, is the same scale as the Assessor's Map, 1N 2E 29DD

No.	Date	By	Revisions
1	12/15/16	RMS	Draft
2	08/23/17	RMS	Final

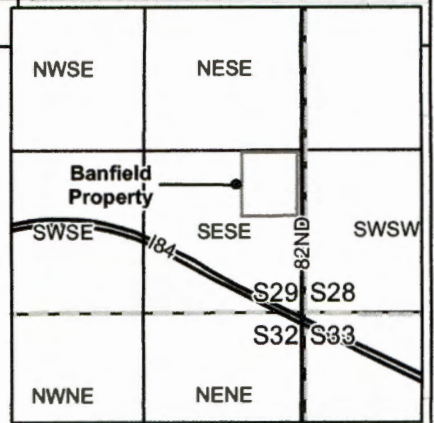
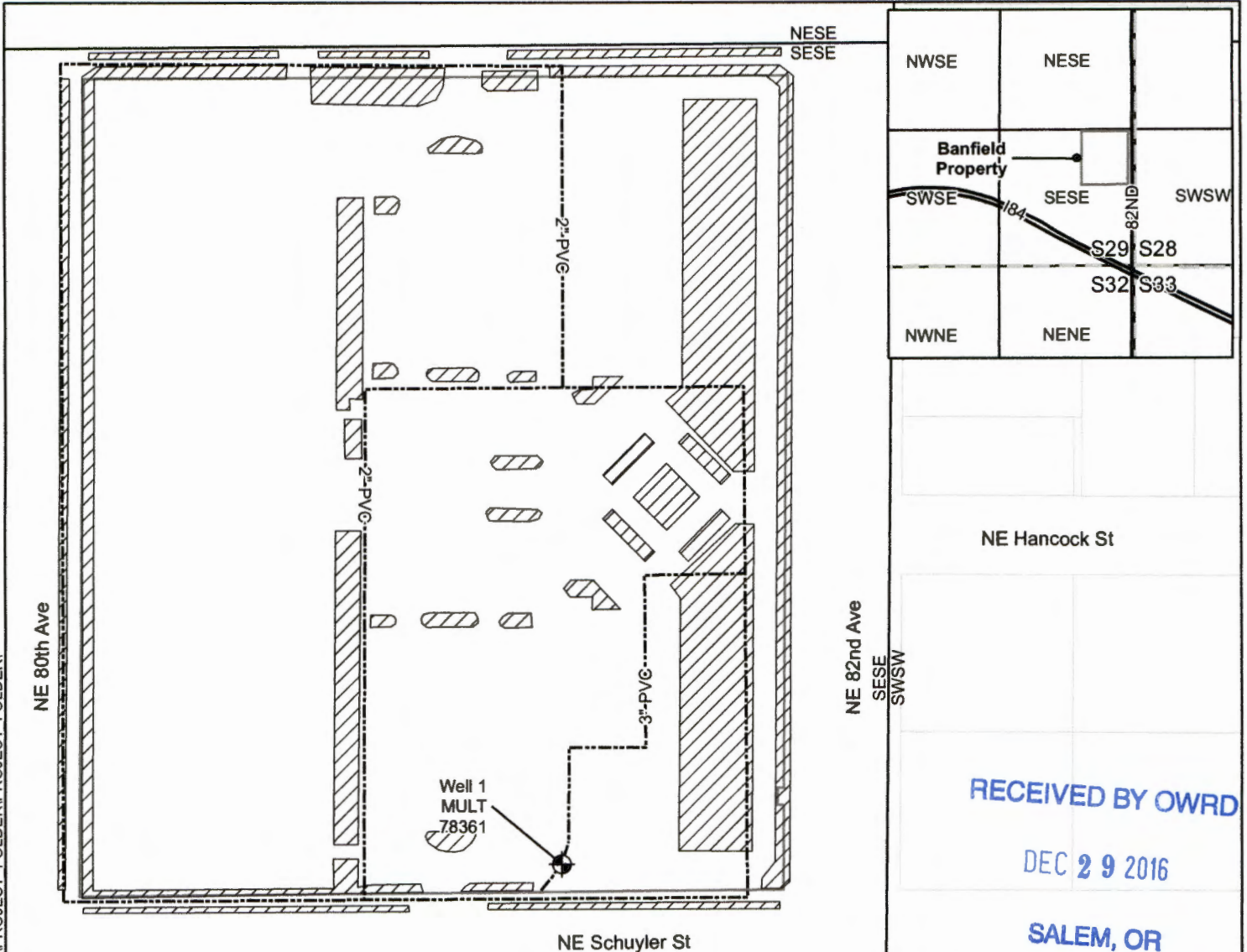


Proj#: 1608001
 Banfield Pet Hospital
 Glenhaven LLC
 8000 NE Tillamook Street
 Portland, OR 97213

G-1847.3

Application for Groundwater Water Right

SE1/4, SE 1/4, Section 29
 Township 1N, Range 2E, W.M.
 Commercial/Irrigation Use: 1.2 Acres



NE Hancock St

NE 82nd Ave
 SESE
 SWSW

RECEIVED BY OWRD
DEC 29 2016
SALEM, OR

PROJECT_FOLDER\PROJECT_FOLDER\PROJECT_FOLDER\PROJECT_FOLDER\PROJECT_FOLDER

Legend

- Wells
- Irrigation mainlines
- Place of Use - Irrigation
- Quarter/quarter
- Tax lots

CWM-H2O

Complete Water Management

415 Colony Drive
 Portland, Oregon 97219
 (503) 893-5937

This map is not intended to provide legal dimensions or property ownership lines. The scale of this map, 1 in = 100 ft, is the same scale as the Assessor's Map, 1N 2E 29DD

No.	Date	By	Revisions
1	12/15/16	RMS	DRAFT

N

50 0 50 100 ft

1 inch = 100 ft

Proj#: 1608001
 Banfield Pet Hospital
 Glenhaven LLC
 8000 NE Tillamook Street
 Portland, OR 97213

G-18423