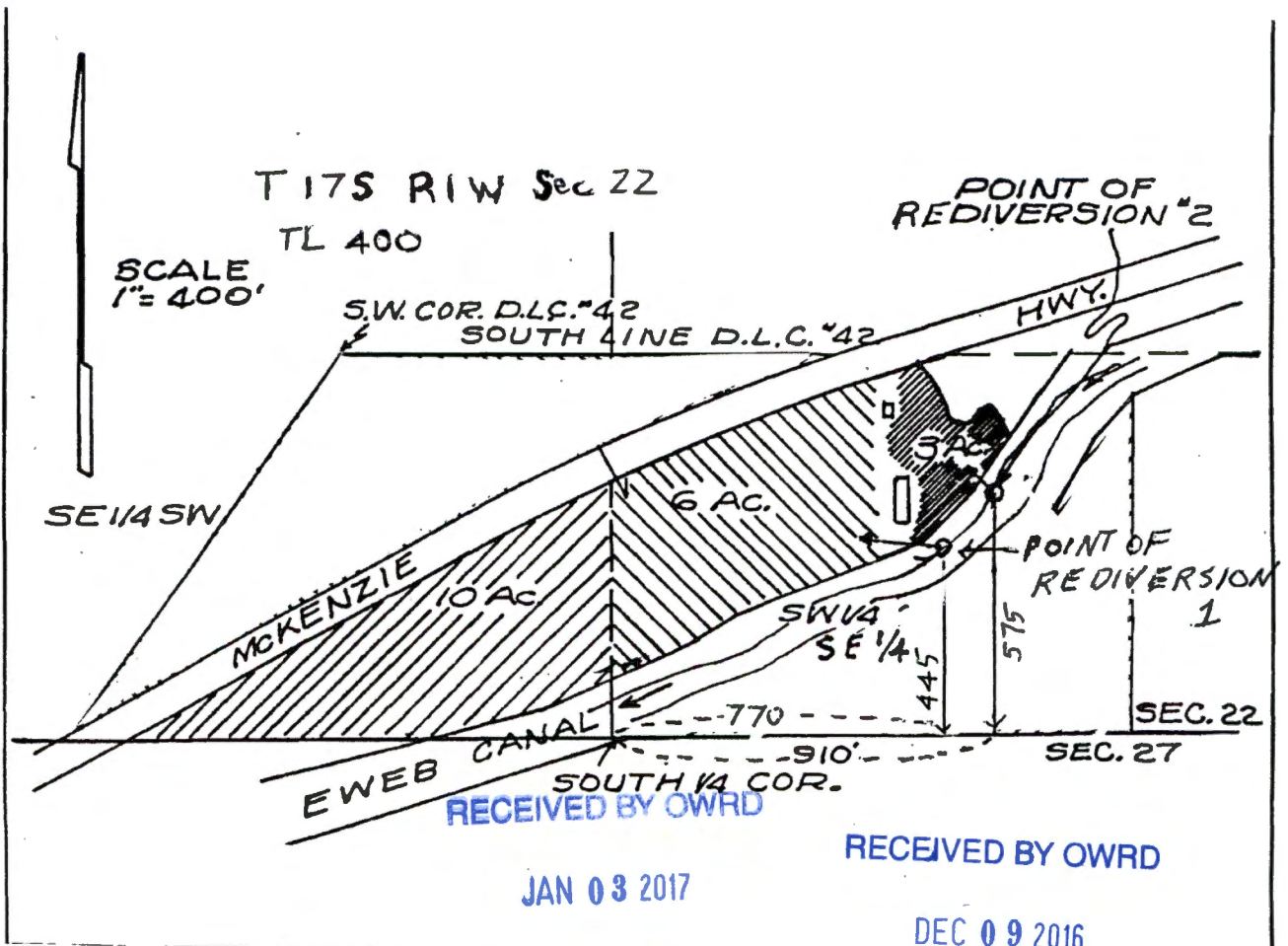
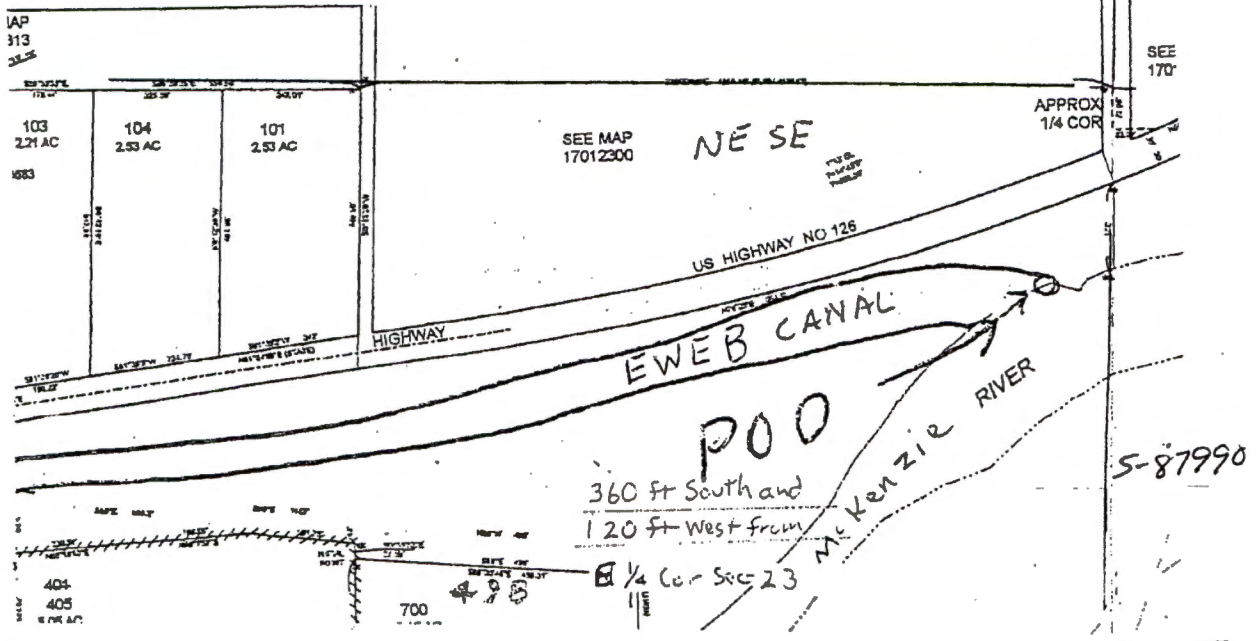


S.E. 1/4 SEC. 23 T. 17S. R. 1W. W.M.  
Lane County

1" = 300'

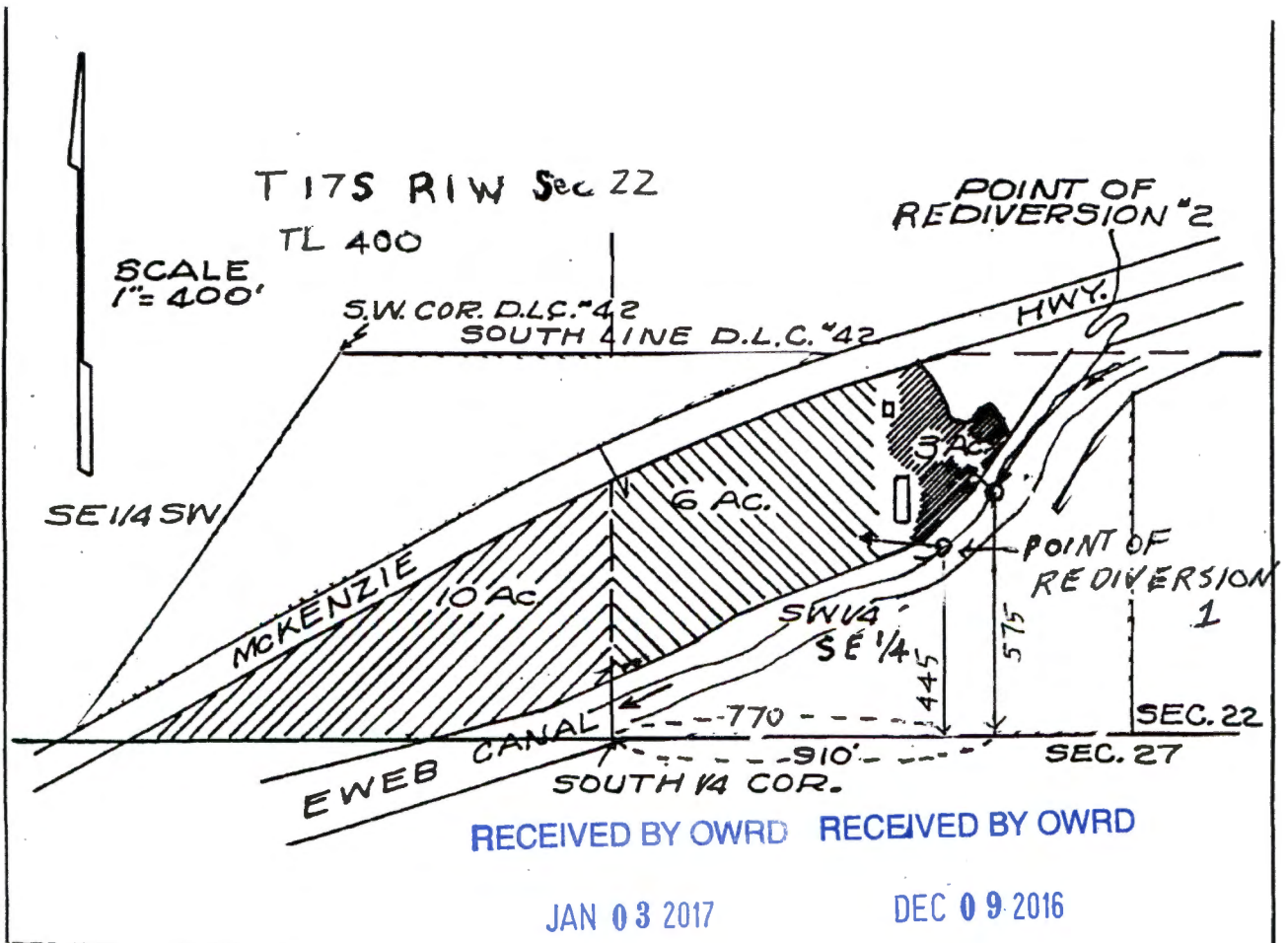
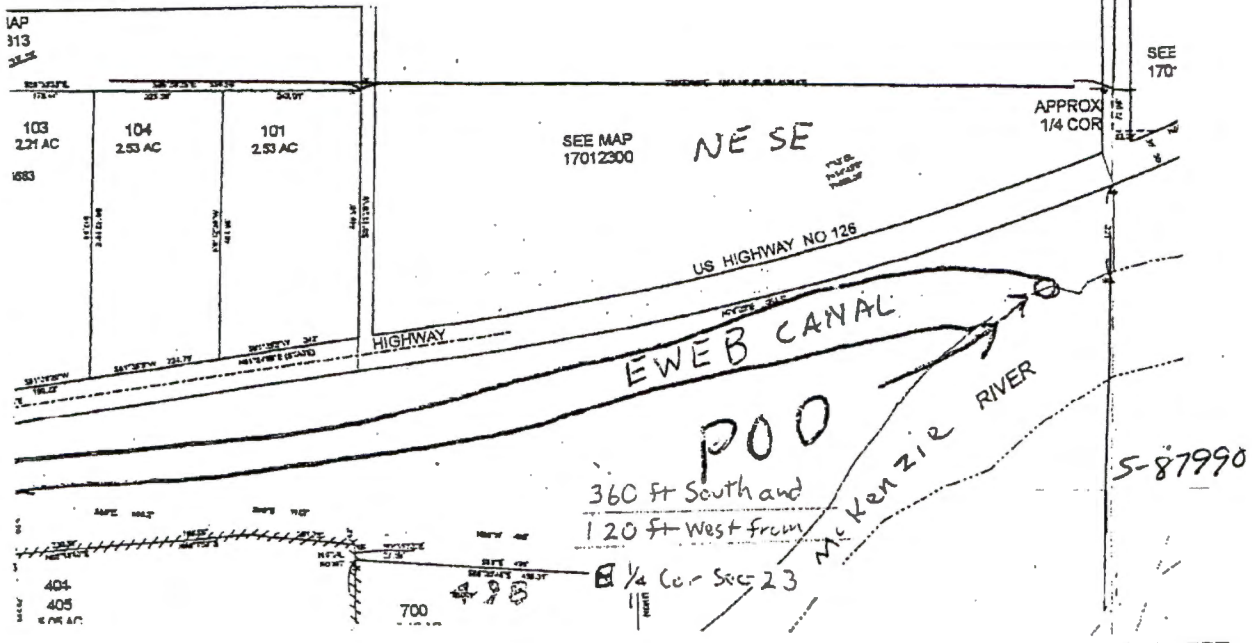


S-88349

SALEM, OR

S.E. 1/4 SEC. 23 T. 17S. R. 1W. W.M.  
Lane County

1" = 300'



JAN 03 2017

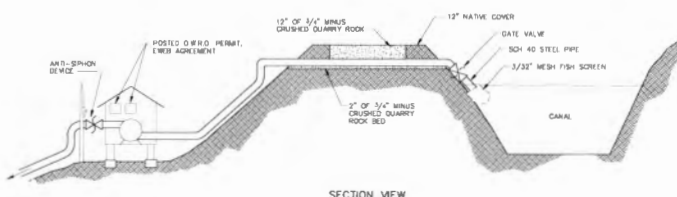
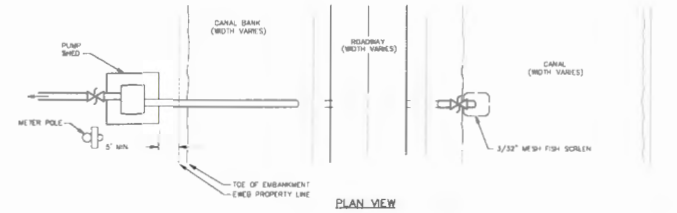
DEC 09 2016

SALEM, OR

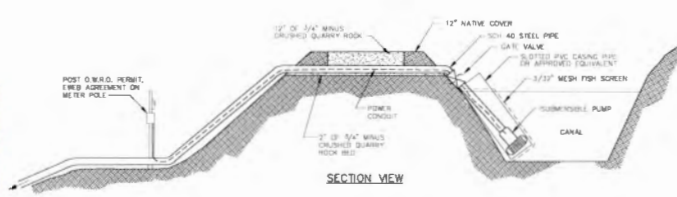
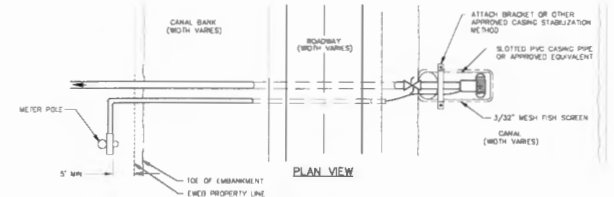
SALEM, OR

S-88349

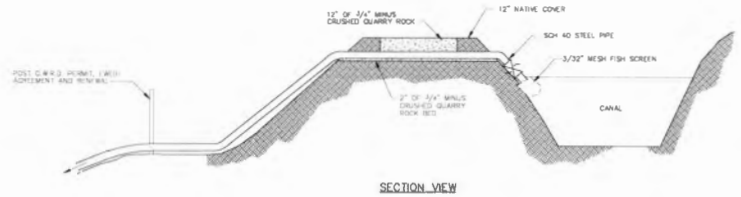
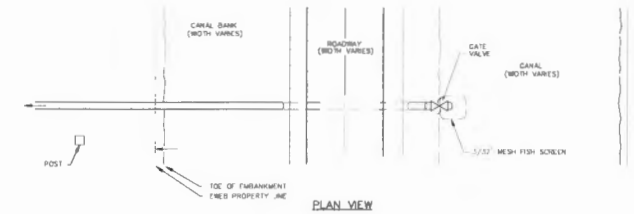
5-88349



CENTRIFUGAL PUMP



SUBMERSIBLE PUMP



DIRECT SIPHON

NOTE:  
1. NO NEW DIRECT SIPHON INSTALLATIONS WILL BE PERMITTED WITHOUT UTILITY APPROVAL. EXISTING DIRECT SIPHONS MUST COMPLY TO THIS STANDARD.

NOTE:  
NON-COMPLIANCE WITH ANY OF THE REQUIREMENTS WILL RESULT IN PUMP TOWER DISCONNECT, EFFECTIVE OCTOBER 1, 2003

- INSTALLATION REQUIREMENTS:**
- EWB TO APPROVE ALL PUMP SYSTEM INSTALLATION PLANS BEFORE CONSTRUCTION OR MODIFICATION. SUBMIT DRAINAGE, PUMP, PIPE, SCREEN, SETTING CALCULATIONS AND WATER RIGHTS INFORMATION FOR EWB TO REVIEW. EWB WILL REVIEW AND COMMENT ON THE PLAN SUBMITAL WITHIN 30 CALENDAR DAYS.
  - SUBMIT INSPECTION REPORT EVERY 5 YEARS TO EWB GENERATION MANAGER PER WRITTEN AGREEMENT.
  - INSTALL ANTI-SIPHON DEVICES TO PREVENT GRAVITY-INDUCED SIPHONING THROUGH PUMP. ACCEPTABLE DEVICES INCLUDE PUMP ACTIVATED VALVE (NELSON 900 SERIES OR APPROVED EQUAL) OR ANTI-SIPHON PIPE GEOMETRY.
  - CONNECT PUMP MOTOR IN COMPLIANCE WITH NATIONAL ELECTRICAL CODE (NEC) STANDARDS AND EWB METEER SERVICE.
  - ANNUALLY MOW VEGETATION WITHIN TWENTY FEET OF PUMP SHED AND PIPE ON CANAL BANK.
  - INSTALL SCH 40 GALVANIZED STEEL, SDR 11 HDPE OR GREATER THICKNESS ON CANAL STRUCTURE.
  - PIPE SHALL BE NO GREATER THAN 6 INCHES IN DIAMETER.
  - ALTERNATIVE PIPE MATERIALS CAPABLE OF H-20 TRAFFIC LOADING AT SHALLOW BURIAL DEPTH ARE ACCEPTABLE IF DEMONSTRATED TO BE ADEQUATE BY ENGINEERING ANALYSIS.
  - PIPE SHALL BE BURIED IN EXTENSION OF CANAL EMBANKMENT IF SO DIRECTED BY EWB ENGINEERING STAFF TO EASE SLOPE MAINTENANCE ACTIVITIES.
  - NON-METALLIC PIPE SHALL BE INSTALLED WITH LOCATE WIRE, NO. 10 THIN COPPER WIRE WITH TYPE UF INSULATED JOINT.
  - EWB STAFF SHALL WITNESS PIPE PRESSURE TEST. INSTALLED PIPE SHALL HOLD A PRESSURE OF 100 PSF OR 1.5 TIMES DESIGN OPERATING PRESSURE, WHICHEVER IS GREATER, FOR A DURATION OF ONE HOUR.
  - PROTECT PIPE INTAKE WITH 3/32-INCH MESH STAINLESS STEEL SCREEN AND A MAXIMUM 0.4 FPS INTAKE VELOCITY PER NATIONAL MARINE FISHERIES SERVICE (NMFS) 1998 JUVENILE FISH SCREEN CRITERIA FOR PUMP INTAKE ADDENDUM.
  - SET PIPE INVERT A MAXIMUM 18 INCHES BELOW GRADE WITH 2" OF 3/4" MINUS CRUSHED QUARRY ROCK BED.
  - CONSTRUCT PUMP SHED AND METER POLE OFF EWB PROPERTY.
  - GATE VALVE SHALL BE AVAILABLE FOR EMERGENCY OPERATION BY EWB PERSONNEL.
  - ALL ROAD AND GROUND SURFACES THAT ARE DISTURBED DURING CONSTRUCTION ACTIVITIES SHALL BE BROUGHT BACK TO ORIGINAL GRADE. ROAD SURFACES SHALL BE RESURFACED WITH 3/4" MINUS CRUSHED QUARRY ROCK AND COMPACTED TO 90% RELATIVE DENSITY.

- POSTING REQUIREMENTS:**
- POST OREGON WATER RESOURCES DEPARTMENT VALID SURFACE WATER PERMIT IN PUMP SHED.
  - POST BONED AGREEMENT WITH ENGINE WATER & ELECTRIC BOARD (EWB) IN PUMP SHED.

PLN	DES	CHK	APP	DATE	BY
DES	CHAMBER	AJD	SPA		
CHK	CANAL	RS			
APP	DAVID				

GENERATION SYSTEMS  
LEABURG & WALTERVILLE POWER CANALS  
TYPICAL IRRIGATION PUMP SET UP, EWB CANAL  
PLAN & SECTION

REV	DATE	BY	APP

D-6834

EXHIBIT A

RECEIVED BY OWRD

JAN 03 2017

SALEM, OR