

05288-5

T. 8 & 9S. R4W., W.M.  
 Setniker Farms - Setniker Family Trust, Project I  
 SECTION 33 WITHIN T8S R4W  
 SECTIONS 4, 8, 9 & 10 WITHIN T9S R4W  
 P.O. BOX 338  
 INDEPENDENCE, OREGON 97351  
 POLK COUNTY



SCALE: 1"=1320'

APPLICATION No. X-XXXX  
 PERMIT No. X-XXXX  
 AMENDMENT No. X-XXXX  
 IN THE NAME OF SETNIKER

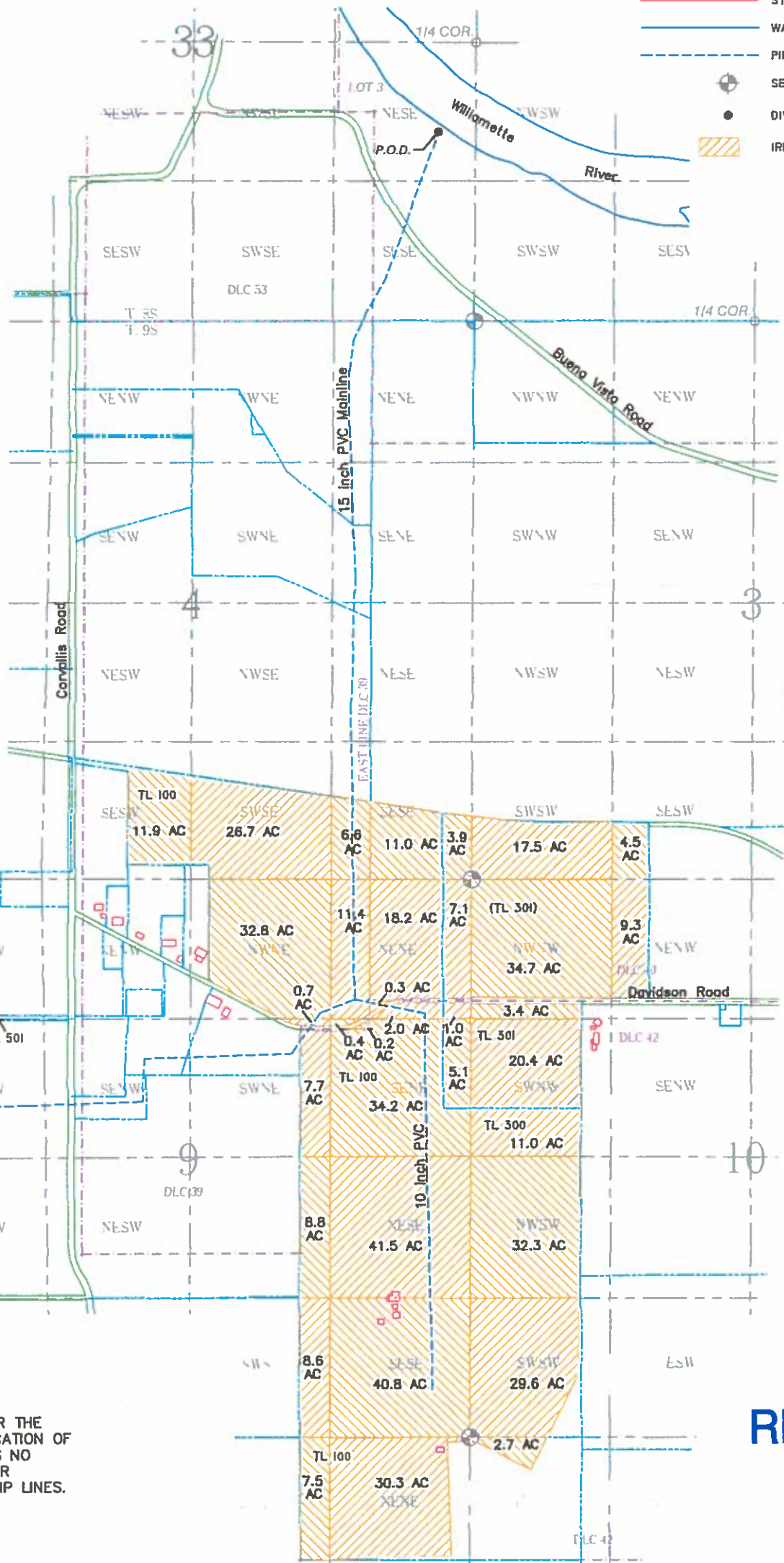
NOTES:

POINT OF DIVERSION (P.O.D) IS LOCATED  
 2250 FT NORTH AND 370 FT WEST FROM  
 THE SE CORNER OF SECTION 33, WITHIN  
 LOT 3, NE 1/4 SE 1/4 OF SECTION 33.

LEGEND

- PROPERTY LINE
- USGS GRID
- DLC BOUNDARY
- ROADWAY
- STRUCTURE
- WATER
- PIPING
- SECTION CORNER
- DIVERSION POINT (P.O.D.)
- IRRIGATION (P.O.U.)

| Place of Irrigation Use by Acres |     |         |     |       |
|----------------------------------|-----|---------|-----|-------|
| Section                          | DLC | 1/4-1/4 |     | Acres |
| 3                                | 40  | SESW    | 301 | 4.5   |
| 3                                | 40  | SWSW    | 301 | 17.5  |
| SECTION 3 TOTAL                  |     |         |     | 22.0  |
| 4                                | 40  | SESE    | 100 | 11.0  |
| 4                                | 38  | SESE    | 100 | 6.6   |
| 4                                | 40  | SESE    | 301 | 3.9   |
| 4                                | 38  | SESW    | 100 | 11.9  |
| 4                                | 38  | SWSE    | 100 | 26.7  |
| SECTION 4 TOTAL                  |     |         |     | 60.1  |
| 9                                | 42  | NENE    | 100 | 2.3   |
| 9                                | 39  | NENE    | 100 | 11.4  |
| 9                                | 40  | NENE    | 100 | 18.2  |
| 9                                | 42  | NENE    | 301 | 1.0   |
| 9                                | 40  | NENE    | 301 | 7.1   |
| 9                                | 42  | NESE    | 100 | 41.5  |
| 9                                | 39  | NWNE    | 100 | 32.8  |
| 9                                | 42  | NWSE    | 100 | 8.8   |
| 9                                | 42  | SENE    | 100 | 34.2  |
| 9                                | 39  | SENE    | 100 | 0.6   |
| 9                                | 42  | SENE    | 301 | 5.1   |
| 9                                | 42  | SESE    | 100 | 40.8  |
| 9                                | 42  | SWNE    | 100 | 7.7   |
| 9                                | 39  | SWNE    | 100 | 0.7   |
| 9                                | 42  | SWSE    | 100 | 8.6   |
| SECTION 9 TOTAL                  |     |         |     | 220.8 |
| 10                               | 40  | NENW    | 301 | 8.3   |
| 10                               | 40  | NWNW    | 301 | 34.7  |
| 10                               | 42  | NWNW    | 301 | 3.4   |
| 10                               | 42  | NWSW    | 300 | 32.3  |
| 10                               | 42  | SWNW    | 300 | 11.0  |
| 10                               | 42  | SWNW    | 301 | 20.4  |
| 10                               | 42  | SWSW    | 300 | 29.6  |
| SECTION 10 TOTAL                 |     |         |     | 140.7 |
| 15                               | 42  | NWNW    | 100 | 2.7   |
| SECTION 15 TOTAL                 |     |         |     | 2.7   |
| 16                               | 42  | NENE    | 100 | 30.3  |
| 16                               | 42  | NWNE    | 100 | 7.5   |
| SECTION 16 TOTAL                 |     |         |     | 37.8  |
| TOTAL IRRIGATED ACRES            |     |         |     | 484.1 |



PREPARATION OF THIS MAP IS FOR THE  
 PURPOSE OF IDENTIFYING THE LOCATION  
 OF THE WATER RIGHT ONLY. THERE IS NO  
 INTENT TO PROVIDE DIMENSIONS OR  
 LOCATION OF PROPERTY OWNERSHIP LINES.

RECEIVED

JAN 06 2017

OWRD

FILE PATH & NAME: C:\BK Water Right Consulting\Projects\Setniker Farms - 7s4w34\Files from Carmen\Setniker Trust Project\SETNIKER BOR OWRD 20170206 - wef.dwg

BK WATER RIGHT CONSULTING  
 PO Box 13434 Salem, Oregon 97309

Setniker Family Trust Water Right Project 1

APPLICATION#: X-XXXXX PERMIT#: X-XXXXX AMENDMENT#: X-XXXXX SHEET 1 OF 3

5-88-28-5

IMPORTANT  
This Map for Assessment  
and Taxation Purposes  
ONLY

SEC.33 T8S R4W WM  
POLK COUNTY

8.4.33

Scale 1" = 400'

29  
32

32  
33  
5  
4

See Map 8.4.28D

See Map 8.4.28CC

S.S.W. CORNER  
HENRY HILL  
DLC NO. 48  
200  
49.31 AC

N.W. CORNER  
SERIAL HEDGES  
DLC NO. 48

S.E. CORNER  
JOHN E. DAVIDSON  
DLC NO. 44  
300  
41.40 AC

300  
41.40 AC

400  
24.80 AC

500  
41.00 AC

500  
41.00 AC

See Map 8.4.32

601  
15.88 AC

702  
12.88 AC

700  
23.91 AC

LOT 5 - 24.78 AC

701  
4.69 AC

LOT 6 - 33.60 AC

13-5

N.W. CORNER  
BENJAMIN F. BURCH  
DLC NO. 53  
800  
PT PARCEL 2  
10.72 AC

803  
PT PAR 1  
1.02 AC

900  
69.00 AC

902  
11.50 AC

N.E. CORNER  
HARRISON P. LOCKE  
DLC NO. 52

1000  
3.20 AC

1100  
3.58 AC

1101  
26.92 AC

1200  
34.87 AC

1200  
34.87 AC

1201  
10.38 AC

1202  
28.40 AC

1300  
17.33 AC

1500  
1.81 AC

1600  
8.85 AC

1800  
10.00 AC

1905  
3.98 AC

1906

200  
49.31 AC

200  
49.31 AC

201  
4.56 AC

202

203  
1.12 AC

204

205

206

801

1301

1900

1901

1904

See Map 9.4.4

See Map 8.4.34

See Map 8.4.34

See Map 8.4.34

See Map 8.4.34

See Map 8.4.34

See Map 8.4.34

See Map 8.4.34

See Map 8.4.34

See Map 8.4.34

See Map 8.4.34

See Map 8.4.34

See Map 8.4.34

See Map 8.4.34

See Map 8.4.34

See Map 8.4.34

See Map 8.4.34

See Map 8.4.34

See Map 8.4.34

See Map 8.4.34

See Map 8.4.34

See Map 8.4.34

See Map 8.4.34

See Map 8.4.34

See Map 8.4.34

See Map 8.4.34

See Map 8.4.34

See Map 8.4.34

See Map 8.4.34

See Map 8.4.34

See Map 8.4.34

See Map 8.4.34

See Map 8.4.34

See Map 8.4.34

See Map 8.4.34

See Map 8.4.34

See Map 8.4.34

See Map 8.4.34

See Map 8.4.34

See Map 8.4.34

See Map 8.4.34

See Map 8.4.34

See Map 8.4.34

See Map 8.4.34

See Map 8.4.34

See Map 8.4.34

See Map 8.4.34

See Map 8.4.34

See Map 8.4.34

See Map 8.4.34

See Map 8.4.34

See Map 8.4.34

See Map 8.4.34

See Map 8.4.34

See Map 8.4.34

See Map 8.4.34

See Map 8.4.34

See Map 8.4.34

See Map 8.4.34

See Map 8.4.34

See Map 8.4.34

See Map 8.4.34

See Map 8.4.34

See Map 8.4.34

See Map 8.4.34

See Map 8.4.34

See Map 8.4.34

See Map 8.4.34

See Map 8.4.34

See Map 8.4.34

See Map 8.4.34

See Map 8.4.34

See Map 8.4.34

See Map 8.4.34

See Map 8.4.34

See Map 8.4.34

See Map 8.4.34

See Map 8.4.34

See Map 8.4.34

See Map 8.4.34

See Map 8.4.34

See Map 8.4.34

See Map 8.4.34

See Map 8.4.34

See Map 8.4.34

See Map 8.4.34

See Map 8.4.34

See Map 8.4.34

See Map 8.4.34

See Map 8.4.34

See Map 8.4.34

See Map 8.4.34

See Map 8.4.34

See Map 8.4.34

See Map 8.4.34

See Map 8.4.34

See Map 8.4.34

See Map 8.4.34

See Map 8.4.34

See Map 8.4.34

See Map 8.4.34

See Map 8.4.34

See Map 8.4.34

See Map 8.4.34

See Map 8.4.34

See Map 8.4.34

See Map 8.4.34

See Map 8.4.34

See Map 8.4.34

See Map 8.4.34

See Map 8.4.34

See Map 8.4.34

See Map 8.4.34

See Map 8.4.34

See Map 8.4.34

See Map 8.4.34

See Map 8.4.34

See Map 8.4.34

See Map 8.4.34

See Map 8.4.34

See Map 8.4.34

See Map 8.4.34

See Map 8.4.34

See Map 8.4.34

See Map 8.4.34

See Map 8.4.34

See Map 8.4.34

See Map 8.4.34

See Map 8.4.34

See Map 8.4.34

See Map 8.4.34

See Map 8.4.34

See Map 8.4.34

See Map 8.4.34

See Map 8.4.34

See Map 8.4.34

See Map 8.4.34

See Map 8.4.34

See Map 8.4.34

See Map 8.4.34

See Map 8.4.34

See Map 8.4.34

See Map 8.4.34

See Map 8.4.34

See Map 8.4.34

See Map 8.4.34

See Map 8.4.34

See Map 8.4.34

See Map 8.4.34

See Map 8.4.34

See Map 8.4.34

See Map 8.4.34

See Map 8.4.34

See Map 8.4.34

See Map 8.4.34

See Map 8.4.34

See Map 8.4.34

See Map 8.4.34

- Canceled No.
- 204
  - 205
  - 206
  - 801
  - 1301
  - 1900
  - 1901
  - 1904

OWPRD

JAN 06 2017

RECEIVED

08/20/16

8.4.33



5-88350

IMPORTANT  
This Map for Assessment  
and Taxation Purposes  
ONLY!

SEC.4 T9S R4W WM  
POLK COUNTY

Scale 1" = 400'

9.4.4

N.E. CORNER  
HARRISON P. LOCKE  
D.L.C. NO. 82  
See Map 8.4.33

400  
48.40 AC

100  
64.00 AC

300  
58.00 AC

803  
53 AC

802  
20.30 AC

200  
0.30 AC

N.W. CORNER  
FELDMO M. THORP  
D.L.C. NO. 40

N.E. CORNER  
FELDMO M. THORP  
D.L.C. NO. 40

See Map 9.4.5

500  
108.40 AC

13-5

801  
31.80 AC

W.L. OF BENJAMIN F. BURCH  
D.L.C. NO. 39

See Map 8.4.3

600  
13.63 AC

1000  
1.22 AC

900  
1.17 AC

700  
40.11 AC

See Map 9.4.9

Canceled No.

701  
800

4 3  
9 10

9.4.4

RECEIVED

JAN 06 2017

06/29/16

OWPRD

5-00350

**IMPORTANT**  
This Map for Assessment  
and Taxation Purposes  
**ONLY**

**SEC.9 T9S R4W WM  
POLK COUNTY**

Scale 1" = 400'

9.4.9

See Map 9.4.4

See Map 9.4.3

4 3  
9 10

Canceled No.

106  
107  
400  
1000

See Map 9.4.10

See Map 9.4.8

**13-5**

CORVALLIS

S.E. CORNER  
HARRISON F. LOCKE  
DLC NO. 38

S.W. CORNER  
FELDMAN M. THORP  
DLC NO. 40

N 1/2 S.E. CORNER  
DLC NO. 38

N 1/2 N.W. CORNER  
HEZEMAH DAVIDSON  
DLC NO. 42

100 S 1/2 N.W. CORNER  
DLC NO. 42

S.W. CORNER  
BENJAMIN F. BURCH  
DLC NO. 39

S 1/2 S.E. CORNER  
DLC NO. 39

**RECEIVED**

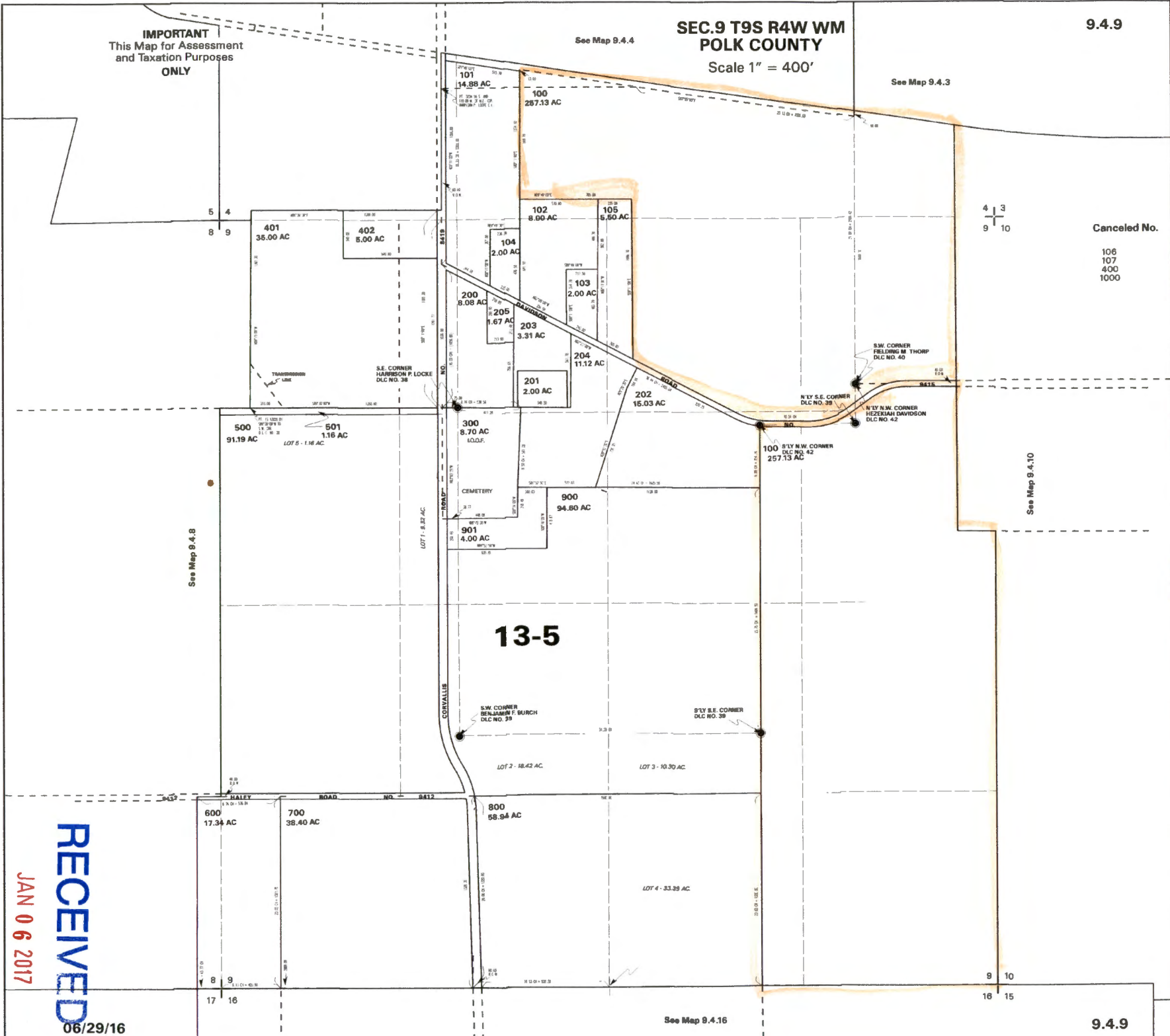
JAN 06 2017

**OWPRD**

06/29/16

See Map 9.4.16

9.4.9



P-8830

IMPORTANT  
This Map for Assessment  
and Taxation Purposes  
ONLY

SEC.10 T9S R4W WM  
POLK COUNTY

See Map 9.4.3 Scale 1" = 400'

9.4.10

See Map 9.4.2

3 2  
10 11

Canceled No.

504  
800

See Map 9.4.11

S.W. CORNER  
FIELDING M THORP  
DLC NO. 40

N.W. CORNER  
HEZEKIAH DAVIDSON  
DLC NO. 42

S.E. CORNER  
FIELDING M THORP  
DLC NO. 40

N.E. CORNER  
HEZEKIAH DAVIDSON  
DLC NO. 42

S.W. CORNER  
DAVID JOHNSON  
DLC NO. 41

N.W. CORNER  
JOHN THORP  
DLC NO. 57

See Map 9.4.9

13-5

503  
2.89 AC

9 10  
16 15

10 11  
15 14

See Map 9.4.16

See Map 9.4.15

9.4.10

06/29/16

RECEIVED

JAN 06 2017

OWPRD

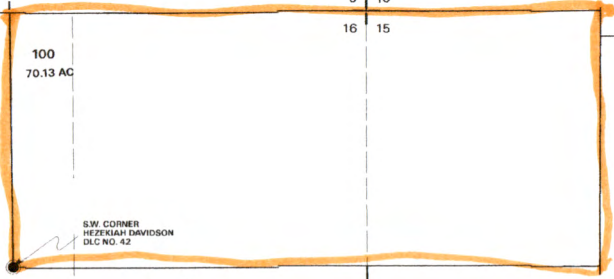
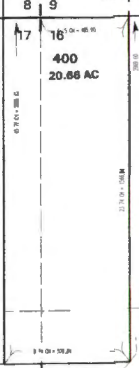
S-88350

**IMPORTANT**  
This Map for Assessment  
and Taxation Purposes  
**ONLY**

**SEC.16 T9S R4W WM**  
**POLK COUNTY**  
Scale 1" = 400'

9.4.16

See Map 9.4.10



Canceled No.

See Map 9.4.17

See Map 9.4.15

**13-5**

CORNERS  
DLC NO. 63

See Map 9.4.21

CORNER  
DLC NO. 70

CORNER  
DLC NO. 70

See Map 9.4.21

06/29/16

9.4.16

OWPRD

JAN 06 2017

RECEIVED