

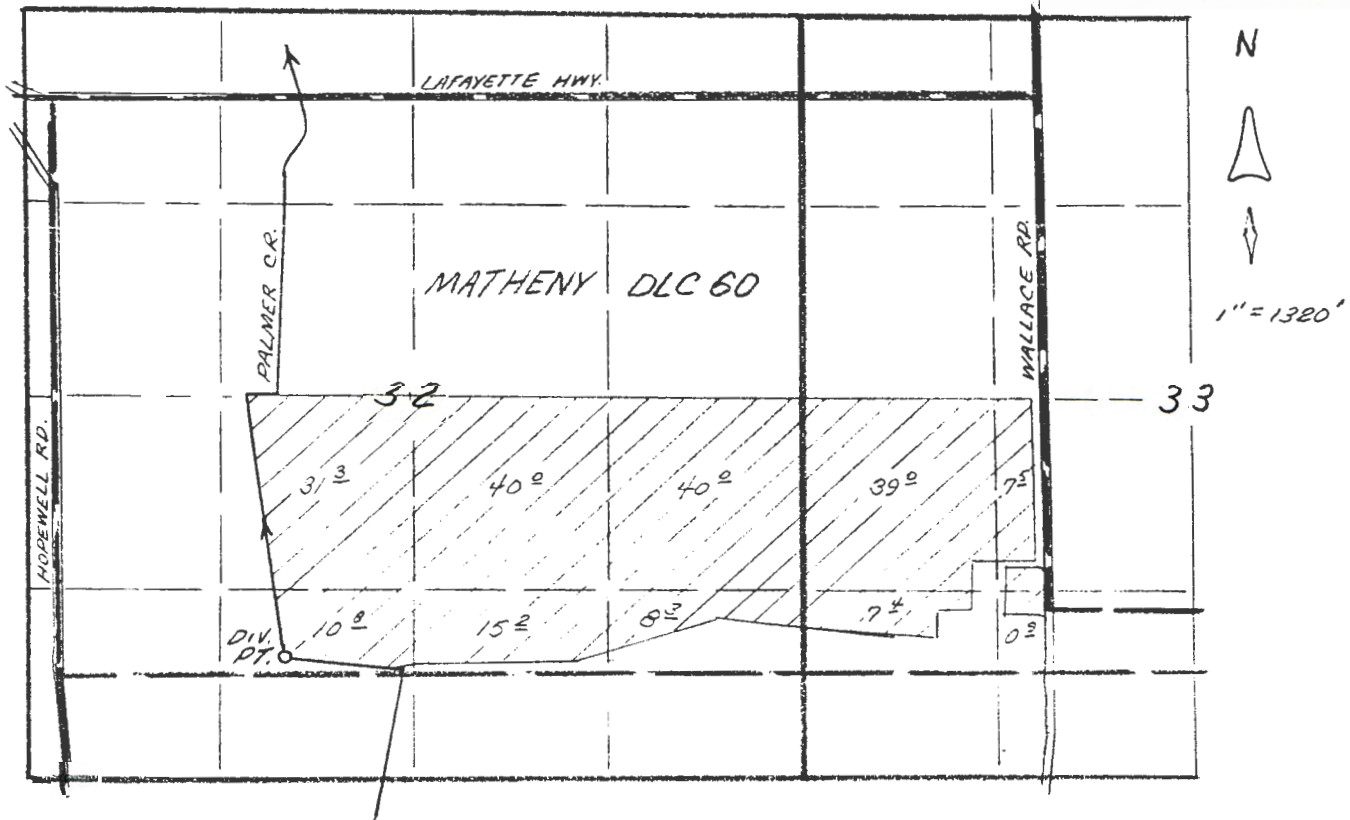
S-80450

TOWNSHIP 5 SOUTH, RANGE 3 WEST, W.M.

RECEIVED

MAR 14 1996

WATER RESOURCES DEPT  
SALEM, OREGON



PALMER CREEK DIV. PT. LOCATED 125 FT. N. AND 1550 FT. E.  
FROM SW CORNER DLC 60.

APPLICATION MAP  
FOR  
EVERGREEN AGRICULTURAL ENT.

S 80450  
52733