

3312



ASSESSMENT & TAX
CARTOGRAPHY

SECTION 12 T.38. R.3W. W.M.
YAMHILL COUNTY OREGON

1"=1320



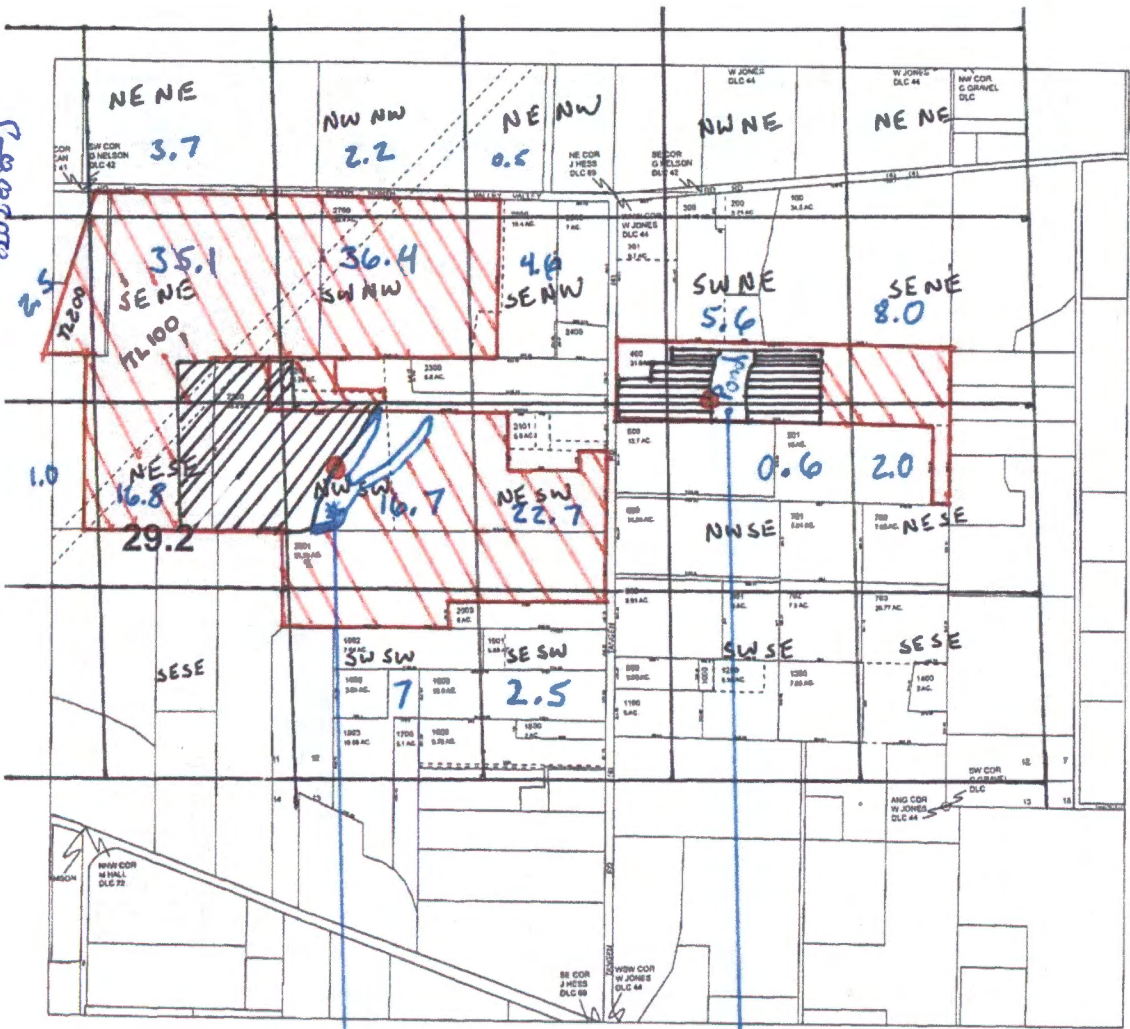
on behalf of Flying
Feather Orchards, Inc.
January 12, 2017

CANCELLED TAXLOTS:
2701
2801
2902
2902
2902

DATE PRINTED: 4/29/2016

This product is for assessment and taxation (A&T) purposes only and has not been prepared for its use for legal, engineering, surveying or any purposes other than assessment and taxation.

3312



7200' North

2.5

1.0

NENE 3.7

NW NW 2.2

NE NW 0.5

NW NE

NE NE

SENE 35.1

SE NW 36.4

SE NW 4.0

SW NE 5.6

SE NE 8.0

NE SE 16.8

SW SW 16.7

NE SW 22.7

0.6

2.0

SE SE

SW SW 7

SE SW 2.5

SW SE

SE SE

Tangen Reservoir

Reservoir #Z

- Certificate 22119 →
- Certificate 22285 →
- New Irrigation 167.9 acres →

- Tangen POD 2200' North and 400 East from SW Corner Sec 12
- Res #Z POD 2700' North and 2300 West from SE Corner Sec 12

RECEIVED BY OWRD

JAN 18 2017

SALEM, OR