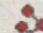





Untitled Map

Write a description for your map.

Legend

-  Circle Measure
-  Feature 1
-  Line Measure
-  Line Measure

SE Webfoot Rd

WELL

334'

143'

SE Fairview Rd

RECEIVED

OWPRD

JAN 23 2017

Google Earth

© 2016 Google



200 ft

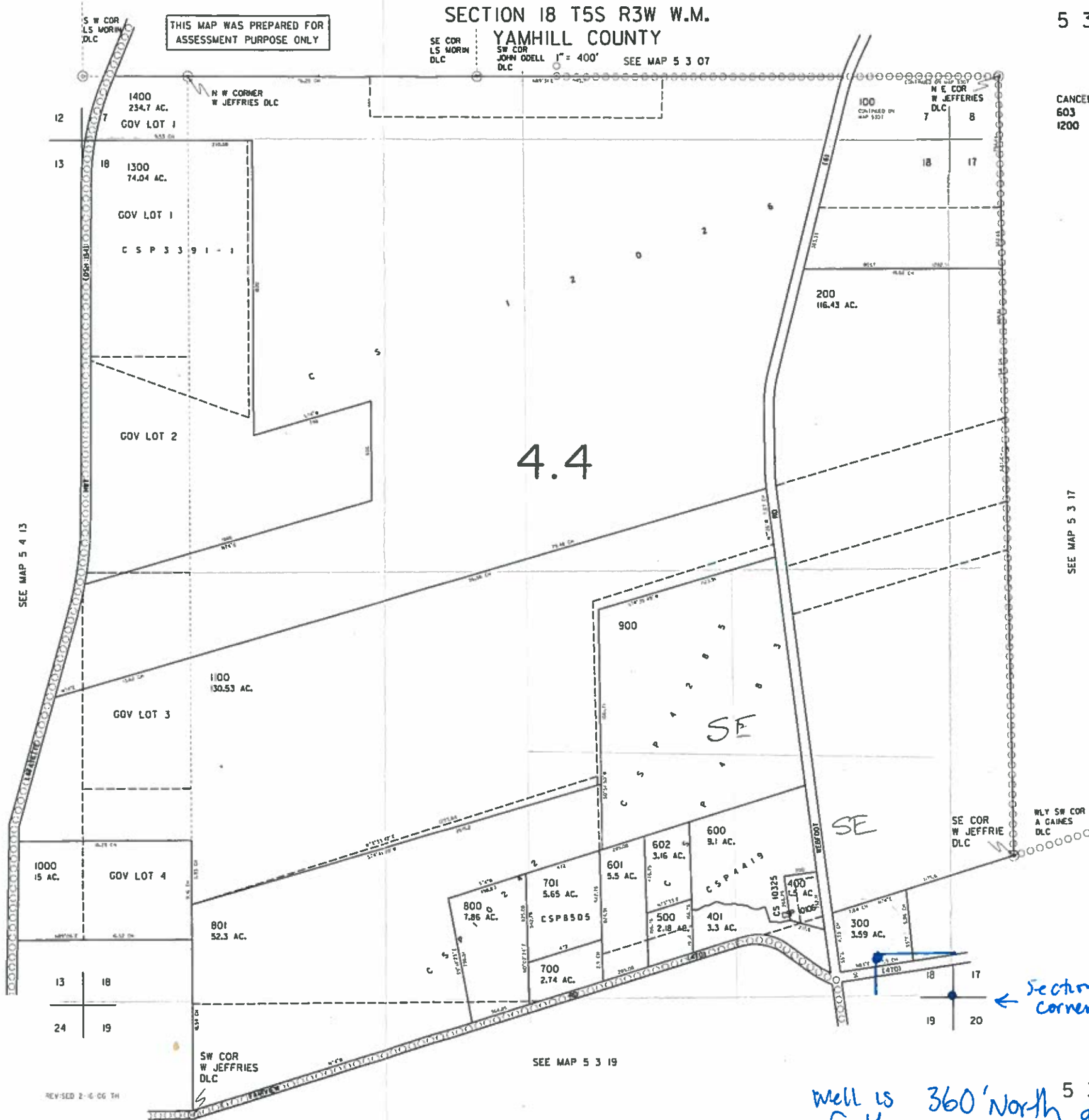
SECTION 18 T5S R3W W.M.

5 3 18

THIS MAP WAS PREPARED FOR ASSESSMENT PURPOSE ONLY

YAMHILL COUNTY
SW COR JOHN ODELL 1" = 400' SEE MAP 5 3 07

CANCELLED
603
1200



RECEIVED

JAN 23 2017

OWRD

← Section corner

← Well location.

Well is 360' North and 640' west of the South east corner of Section 18

G-18442

#10023254A23



17875 SE Webfoot Rd

grow AREA

grow AREA #2

© 2017 Google

Google Earth

grow AREA #1-(.507) #2(.219) total .726 Acre