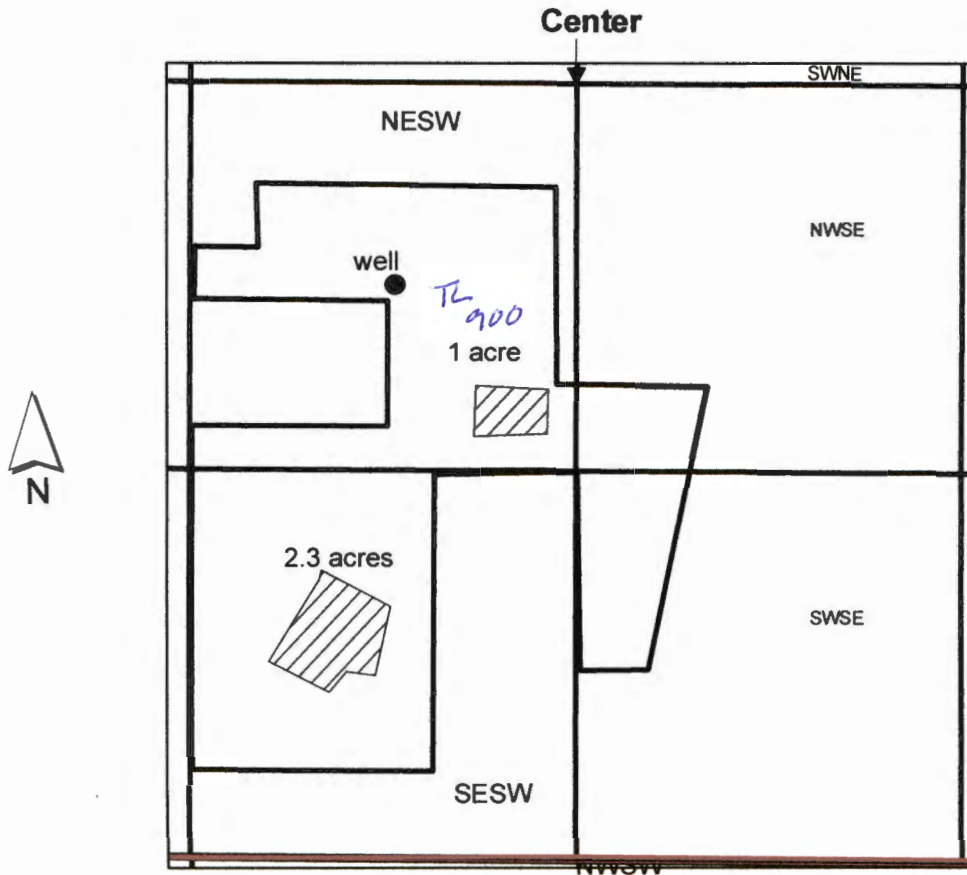


T37S R8W East Half of Southwest and West Half of Southeast Quarters of Section 35



1 inch = 660 feet

The well is located 686 ft south and
633 ft west from the center of Section 35.

RECEIVED BY OWRD

JAN 26 2017

SALEM, OR

G-18445

G-18445

BOOK 16

SECTION 35 T.37 S. R.6 W. W. M.
JOSEPHINE COUNTY

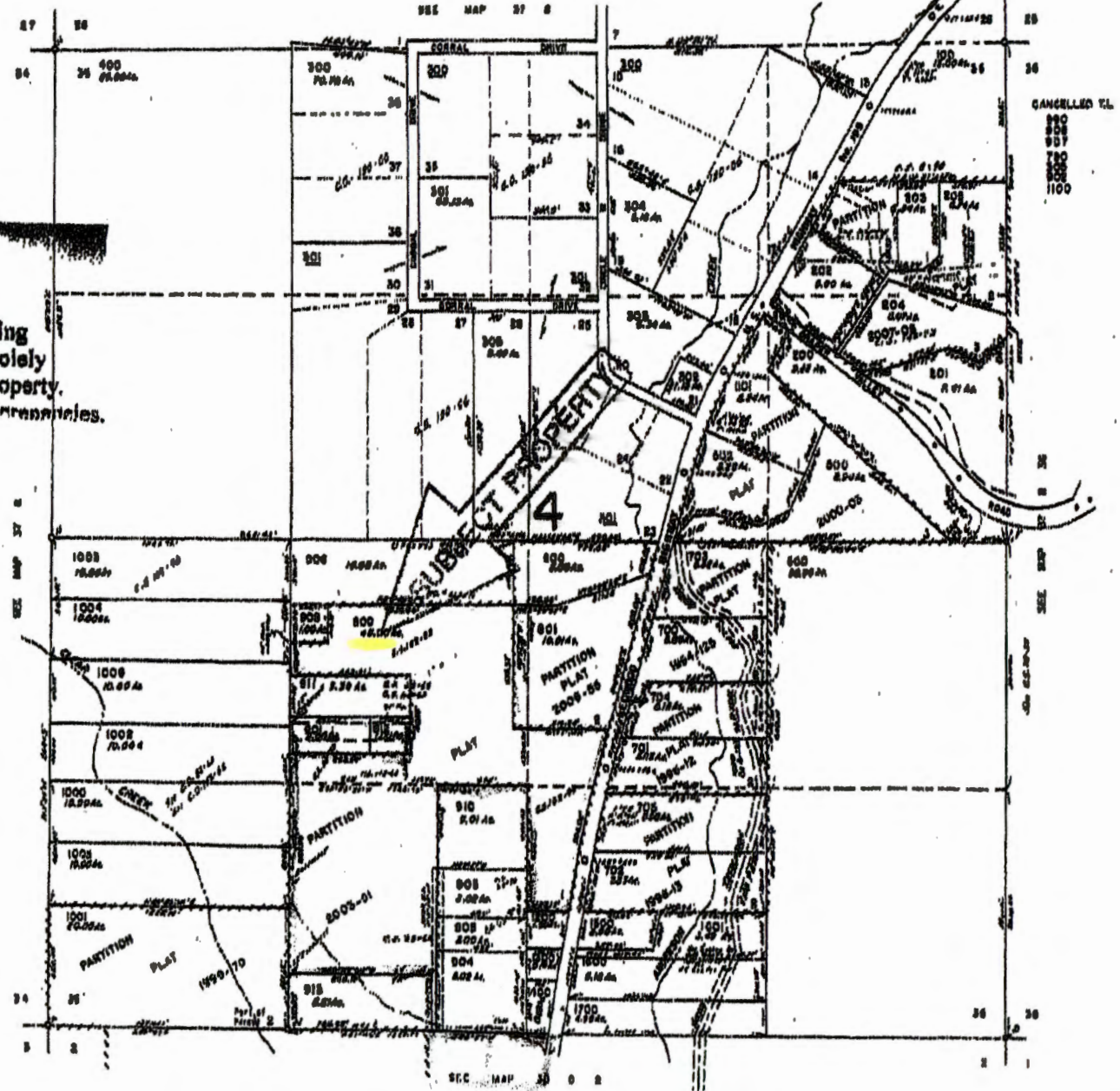
37 8 35

This map was prepared for
assessment purposes only.

RECEIVED BY OWRD
JAN 26 2017
SALEM, OR

TICOR TITLE
This map and the accompanying
legal description are provided solely
to assist in locating the subject property.
These titles guarantee no liability for discrepancies.

RECEIVED BY OWRD
DEC 19 2016
SALEM, OR



37 8 35