

G-18447

T 17S R 4W Sec 19

1" = 300'

NW SW

AMAZON

DIVERSION

221  
6.24

4000  
29.24 AC

2600  
5.85 AC

2300  
24.79 AC

2500  
5.1 AC

2400  
9.27 AC

sw 1/4 sw 1/4  
**RECEIVED**  
JAN 27 2017  
**OWRD**

well is 930 ft N and  
240 ft E from  
sw corner Sec 19

3800  
3700  
3600  
3500

24 19  
25 30

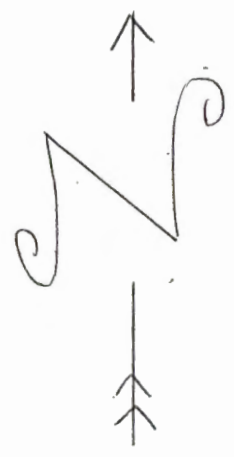
EE MAP  
7052500

ref  
Cassins

SFF MAP

HILLAIRE

BONNEVILLE  
POWER  
ADMINISTRATION



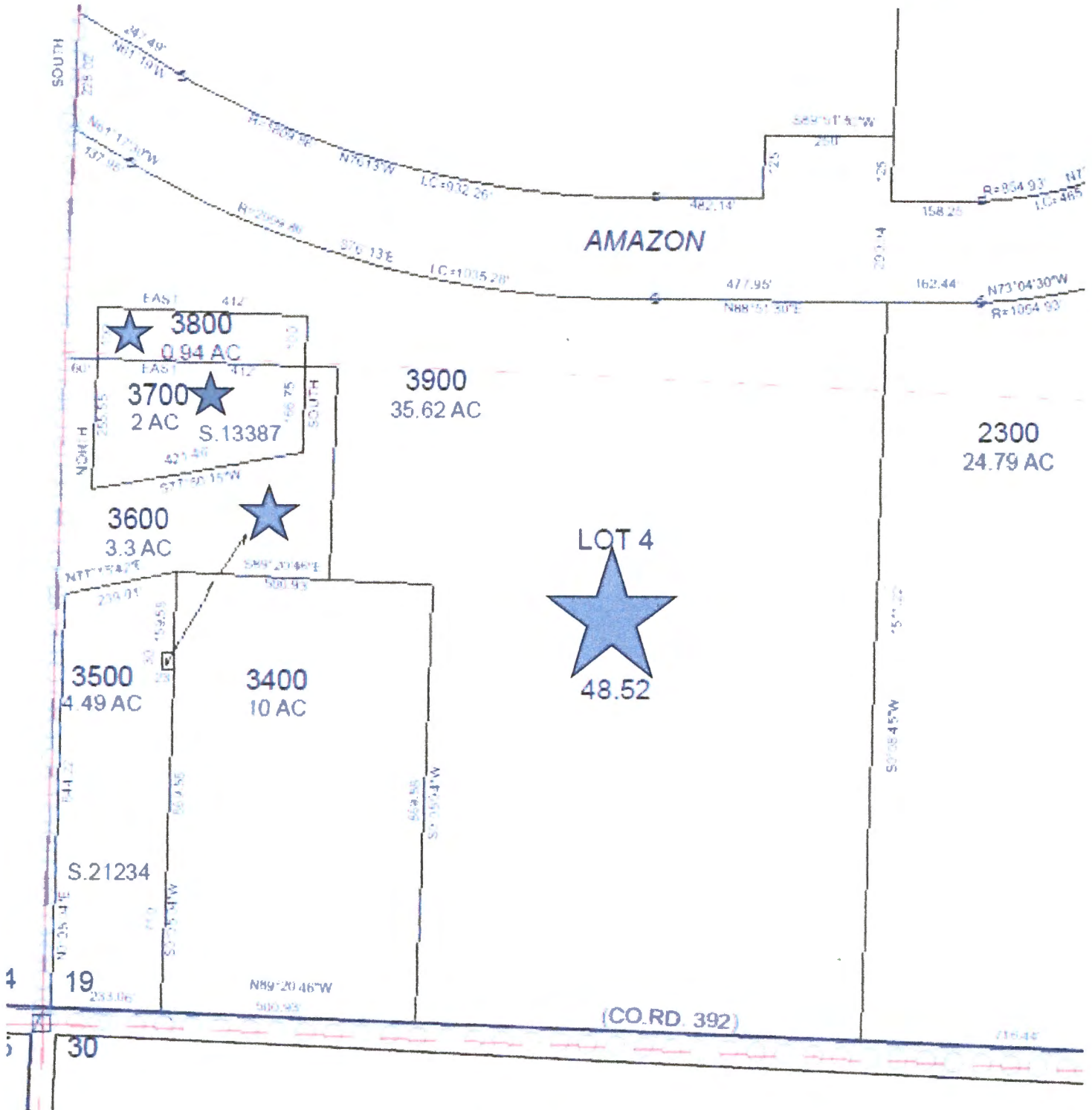


RECEIVED

JAN 27 2017

OWRD

MAP NO.  
17-04-19-00



THIS MAP IS TO ASSIST LOCATING PROPERTY.  
CASCADe TITLE CO. ASSUMES NO LIABILITY FOR INACCURACIES.

G-18447