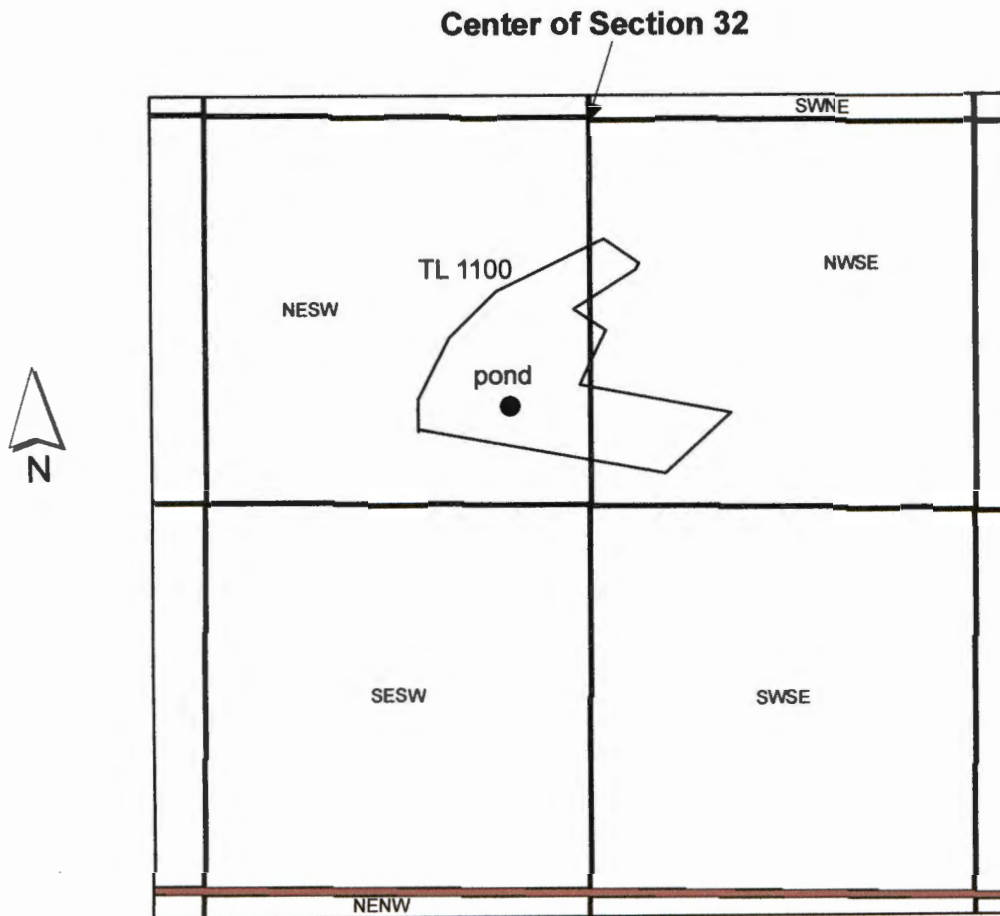


# T39S R8West East Half Southwest Quarter and West Half Southeast Quarter of Section 32



1 inch = 660 feet

The pond will be located approximately 272 ft west  
and 979 ft south from the center of Section 32,  
per the landowner.

RECEIVED BY OWRD

FEB 21 2017

SALEM, OR

R-88371





R-BERTH

This map was prepared for  
assessment purpose only.

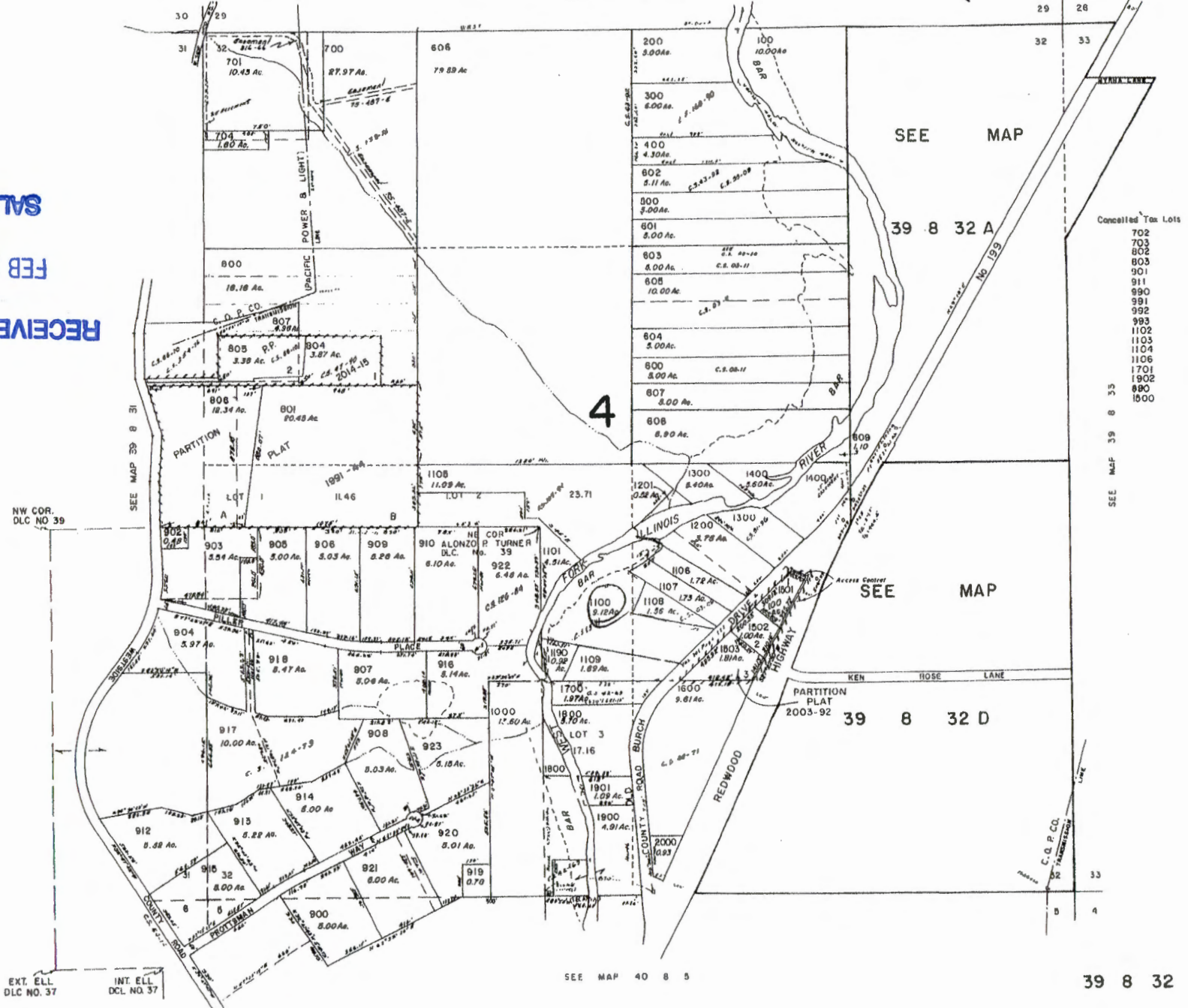
1" = 400'

230  
Bunch

T-1100

SEE MAP 39 8 29

RECEIVED BY OWRD  
FEB 21 2017  
SALEM, OR



- Cancelled Tax Lots
- 702
  - 703
  - 802
  - 803
  - 901
  - 911
  - 990
  - 991
  - 992
  - 993
  - 1102
  - 1103
  - 1104
  - 1106
  - 1701
  - 1902
  - 890
  - 1800