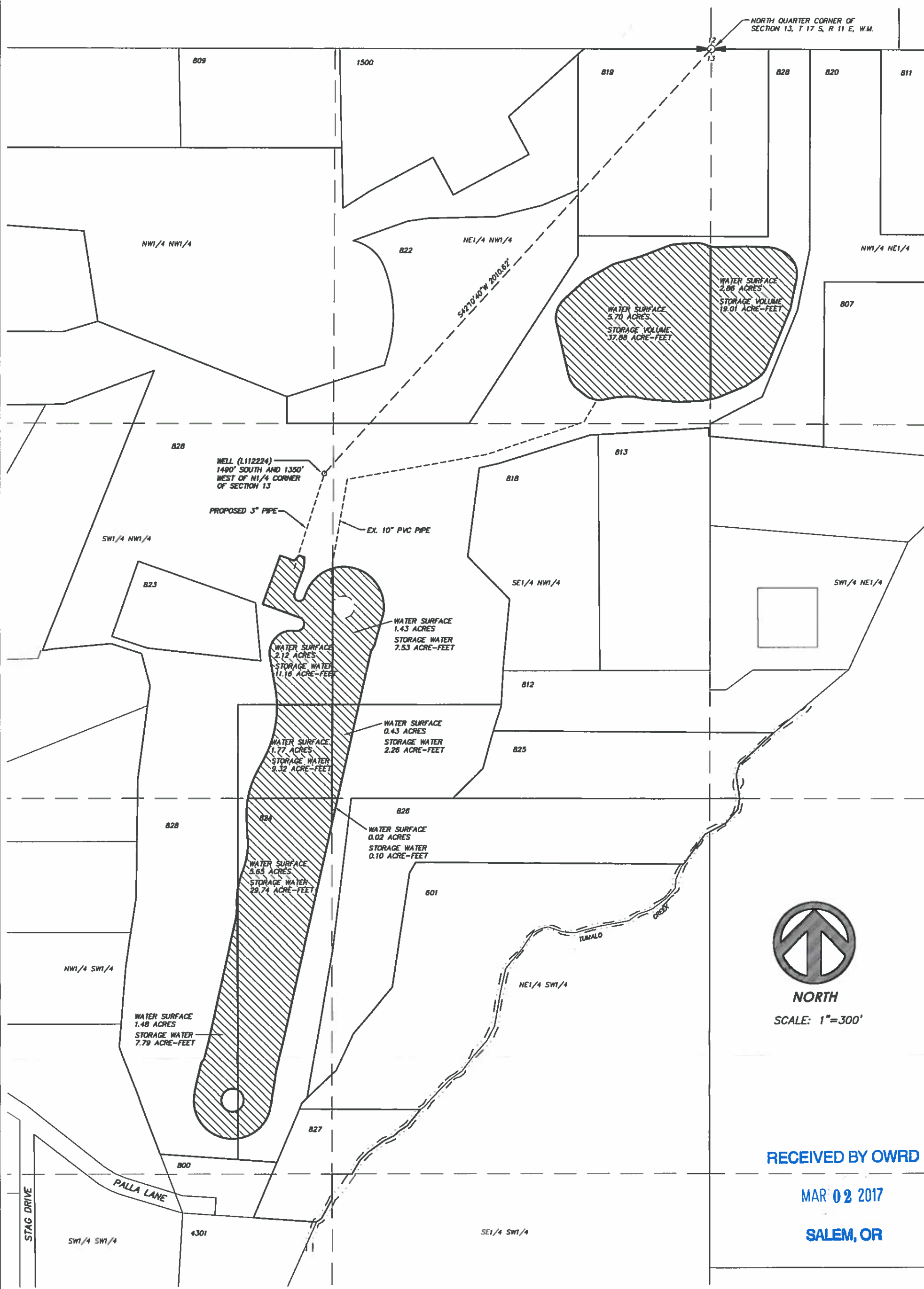


DESCHUTES COUNTY  
SECTION 13 T17S R11E W.M.

NORTH QUARTER CORNER OF  
SECTION 13, T 17 S, R 11 E, W.M.



**NORTH**  
SCALE: 1"=300'

RECEIVED BY OWRD

MAR 02 2017

SALEM, OR

**LEGEND**

-  STORAGE RIGHT
-  QUARTER-QUARTER SECTION LINE

**HWA** SURVEYORS, ENGINEERS & PLANNERS  
HICKMAN, WILLIAMS & ASSOCIATES, INC  
1201 NW WALL STREET, SUITE 100  
BEND, OREGON 97701  
PHONE: 541.389.9351 FAX: 541.388.5414

LIMITED LICENSE APPLICATION MAP

DATE: 11/29/2016

041125-WATER RIGHTS.DWG