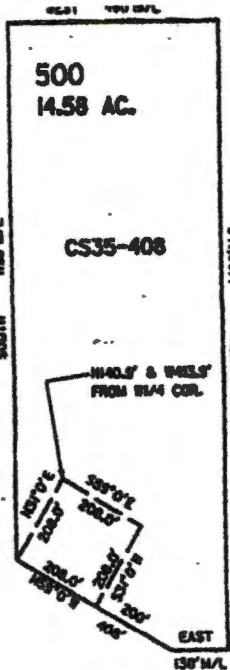


WORK COPY

RECEIVED
AUG 04 2005
WATER RESOURCES DEPT
SALEM, OREGON



3" = 1320' ±



W
1/4 COR.

200
30.00 AC

600
113.37 AC

CS 71

NW 1/4

NE 1/4

Point of Diversion
Reservoir Location
1500' North
1500' East
of SW Corner
Section 36

Place of Use
approx 2.8 acre parcel
TL 400
newly changed

400
1.09 AC

N2309.7° E 10547.4'
FROM SW 1/4 COR.

600

APP NO
5 86397

LANDING SW 1/4

SE 1/4

RECEIVED BY OWRD

MAR 23 2017

SALEM, OR

26

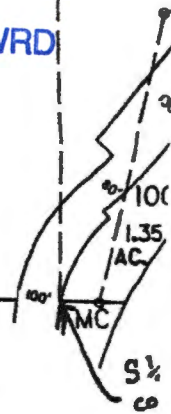
36

SW CORNER OF SEC. 36

2

SEC. 36 T.35S. R.14W. W.M.
CURRY COUNTY

1" = 400'
SCALE



R-88380

2-883380

RECEIVED BY OWRD

FEB 27 2017

SALEM, OR

DONNELLY #1

RECEIVED BY OWRD

MAR 23 2017

SALEM, OR

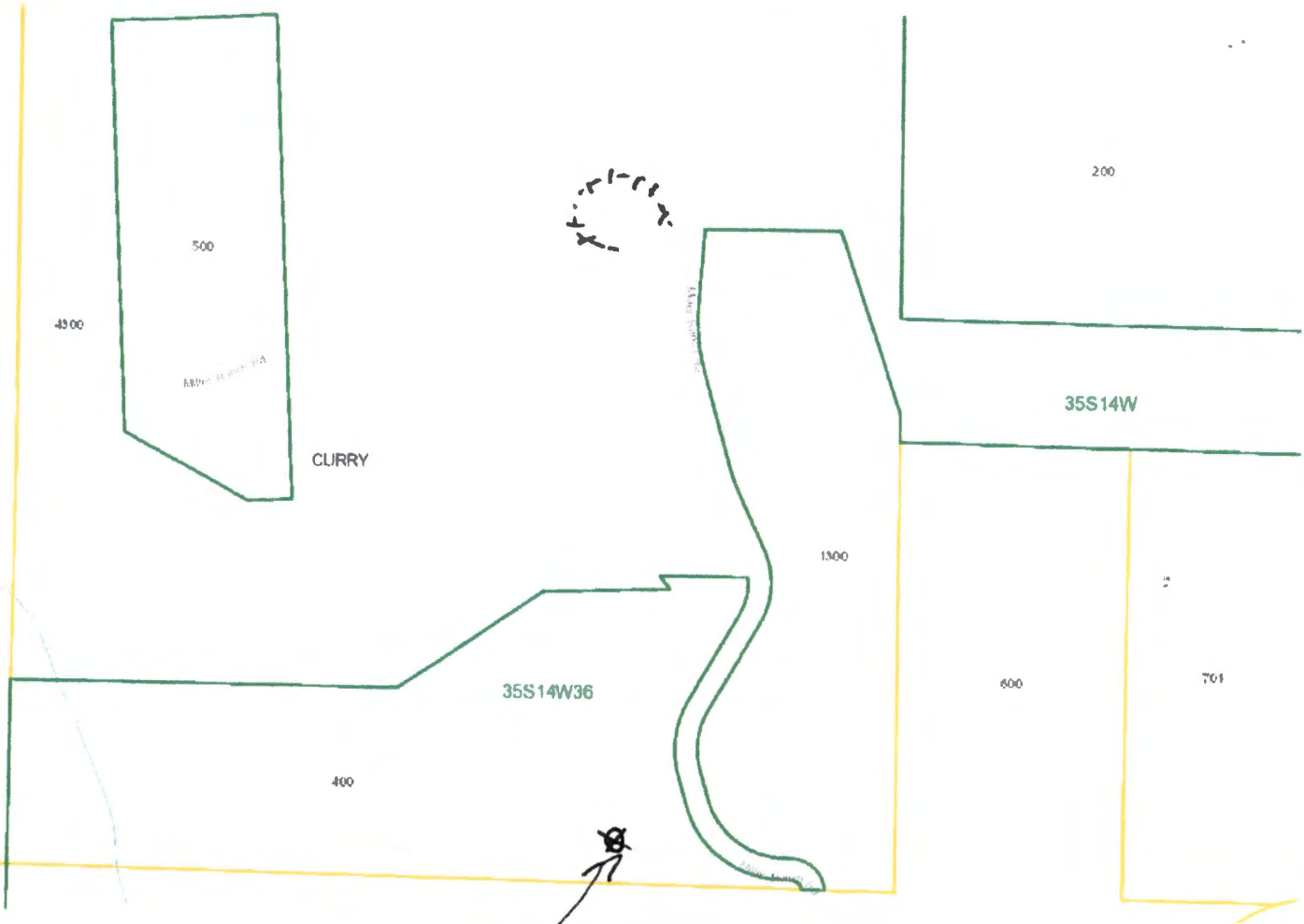
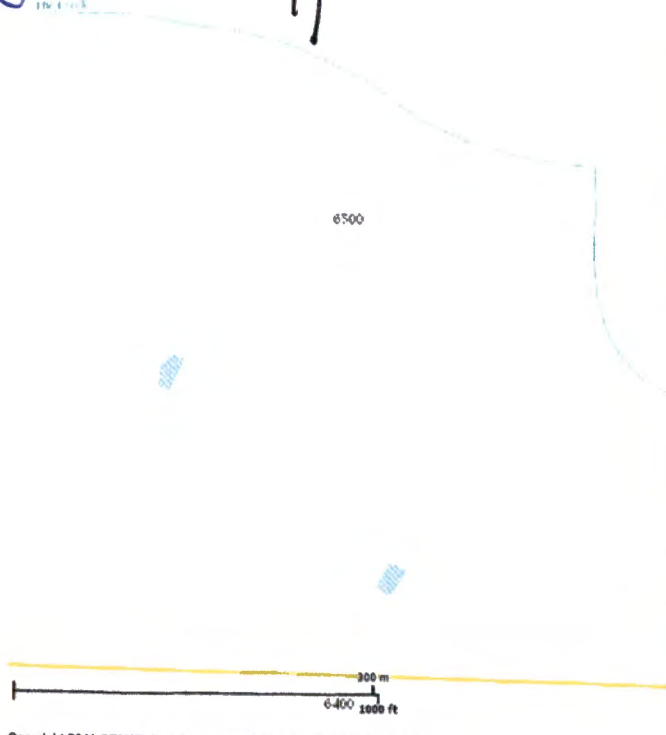


New Directions

#1

Kerri Cope

R-58580



Copyright 2011 ORMAP. All rights reserved. Thu Jan 28 2017 10:41:34 AM

DONNELLY #1

RECEIVED BY OWRD

MAR 23 2017

SALEM, OR

RECEIVED BY OWRD

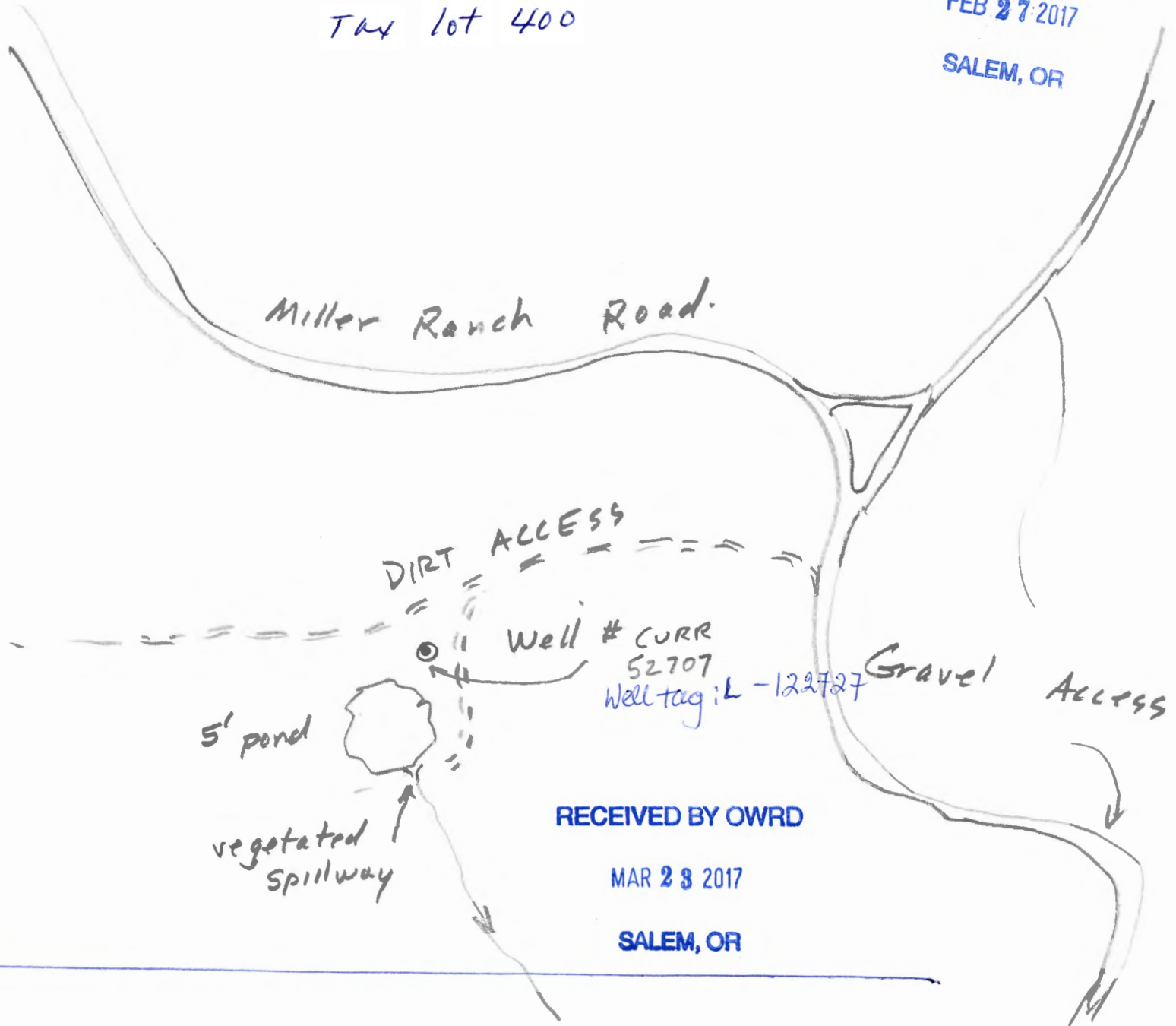
FEB 27 2017

SALEM, OR

288380

Donnelly #1 Sketch Map
in Section 36, T35S, R14W
Tax lot 400

RECEIVED BY OWRD
FEB 27 2017
SALEM, OR



RECEIVED BY OWRD
MAR 28 2017
SALEM, OR

New Directions

R-88580



RESERVOIR

Donnelly #1 in the NE 1/4 SW 1/4 Section 36, T35S, R14W, W.M. Curry County, OR

1/4



CURRY



35S14W

NW SW

NE SW

POB

1130.68

499.29

355.03

270.51

35S14W36

"SCALE"

531.68

TL 400



Copyright 2011 ORMAP. All rights reserved. Thu Jan 28 2017 10:41:34 AM

S 1/16

S 35

S 36

DONNELLY #1

SW SW

SE SW

RECEIVED BY OWRD

FEB 27 2017

SALEM, OR

RECEIVED BY OWRD

MAR 23 2017

SALEM, OR