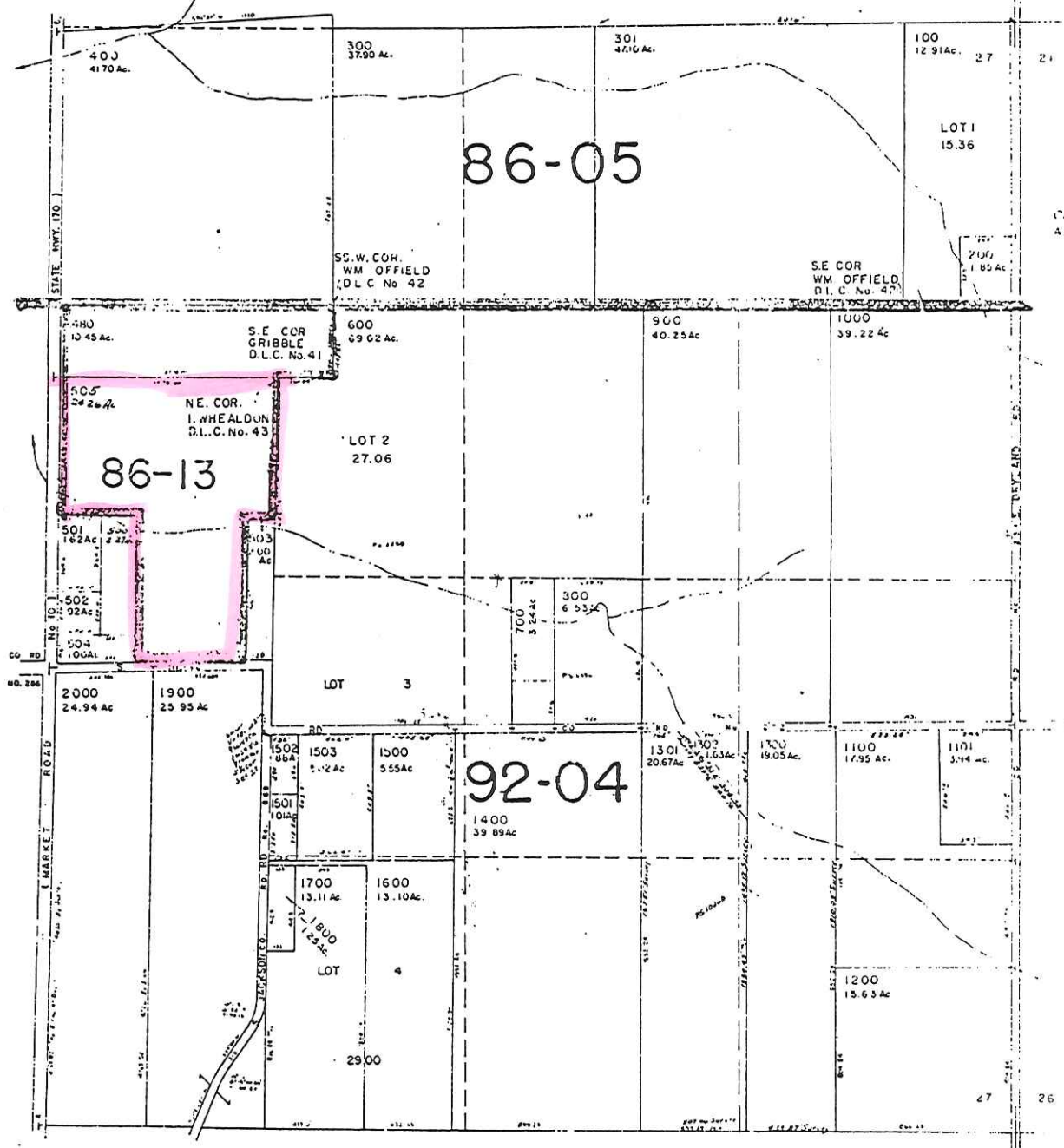
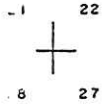


SCALE 1:9300.



SEE MAP 4 IE 22

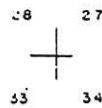
22 23



Cancelled No. 430

SEE MAP 4 IE 25

SEE MAP 4 IE 25



SEE MAP 4 IE 34

4 IE 27

Application No. P-77514
Permit No.

RECEIVED
DEC 30 1994
WATER RESOURCES DEPT.
SALEM, OREGON

Application No. P-77514
Permit No.

RECEIVED

DEC 30 1994

WATER RESOURCES DEPT.
SALEM, OREGON

480
10.45Ac.

600
69.02Ac.

505
24.26Ac.

501 500
1.62 2.27

FORD

503
2.00

504
1.00Ac.

HEINE Road

2000
24.94Ac.

1900
25.95Ac.

DRYLAND RD

1503
5.02Ac.

1500
5.55Ac.

1502
0.88

1501
1.10

JILL
A

1700
13.11Ac.

1600
13.10Ac.

1800
1.25Ac.

ARQUAM - Conby Hwy #189

JACKSON ROAD