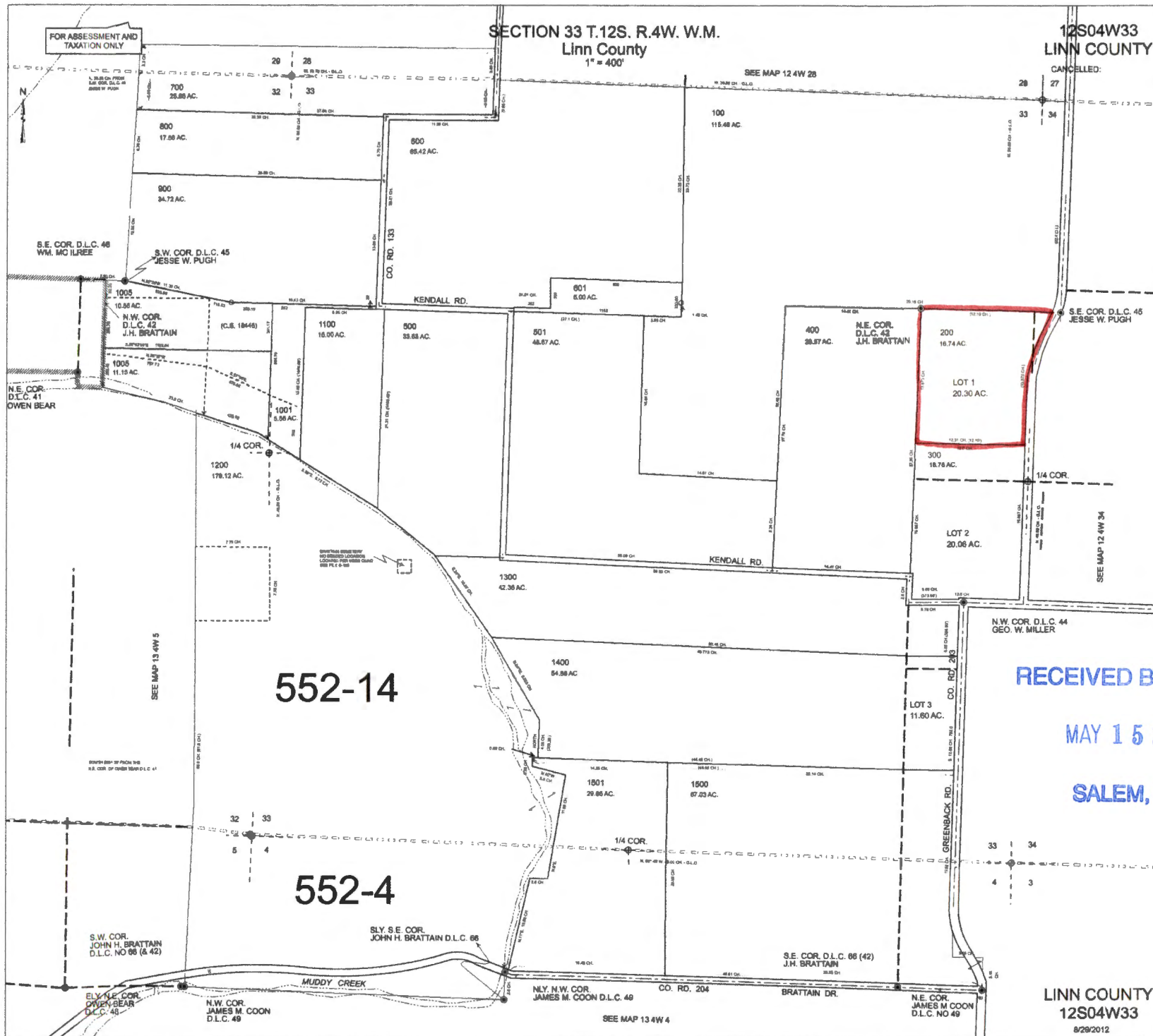


5-108511



RECEIVED BY OWRD  
 MAY 15 2017  
 SALEM, OR

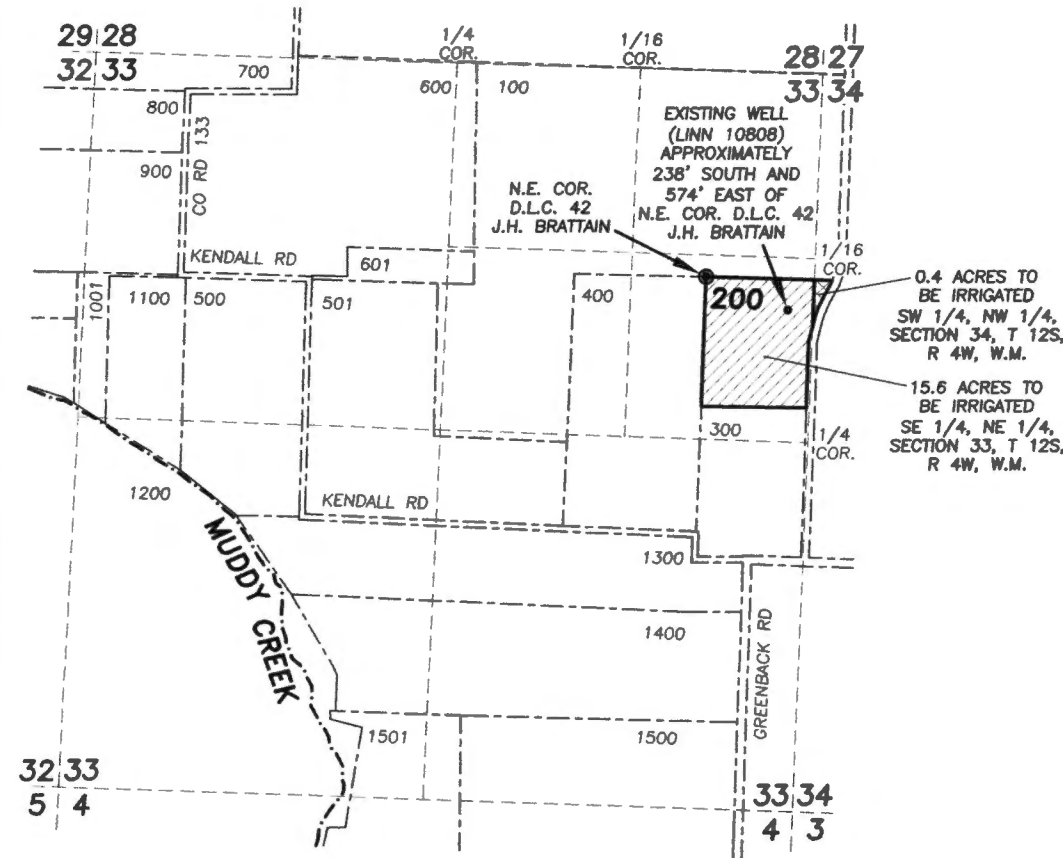
LINN COUNTY  
 12S04W33  
 8/29/2012

**WILLIAM RADKE  
WATER RIGHT APPLICATION MAP  
APRIL 17, 2017**

**TAXLOT 200, MAP 120433**

located in

**SECTIONS 33 & 34, TOWNSHIP 12 SOUTH,  
RANGE 4 WEST, WILLAMETTE MERIDIAN  
LINN COUNTY, OREGON**



SCALE: 1" = 1320'

RECEIVED BY OWRD

MAY 15 2017

SALEM, OR

**LEGEND**

- MUDDY CREEK
- SECTION LINE
- TAX LOT LINE

11581-9  
5-18511