

BLUE MOUNTAIN CONSERVATIVE BAPTIST ASS.
CAMP ELKANAH
GROUND WATER APPLICATION MAP FOR A PERMIT
SEC 8., T. 4S., R. 35E. W.M.
UNION COUNTY, OREGON



PROPOSED P.O.A.
WELL LOCATED 695'N AND 1495'E FROM THE
CENTER SEC 8, T4S, R35E WM



5.0 AC - IRRIGATED ACRES

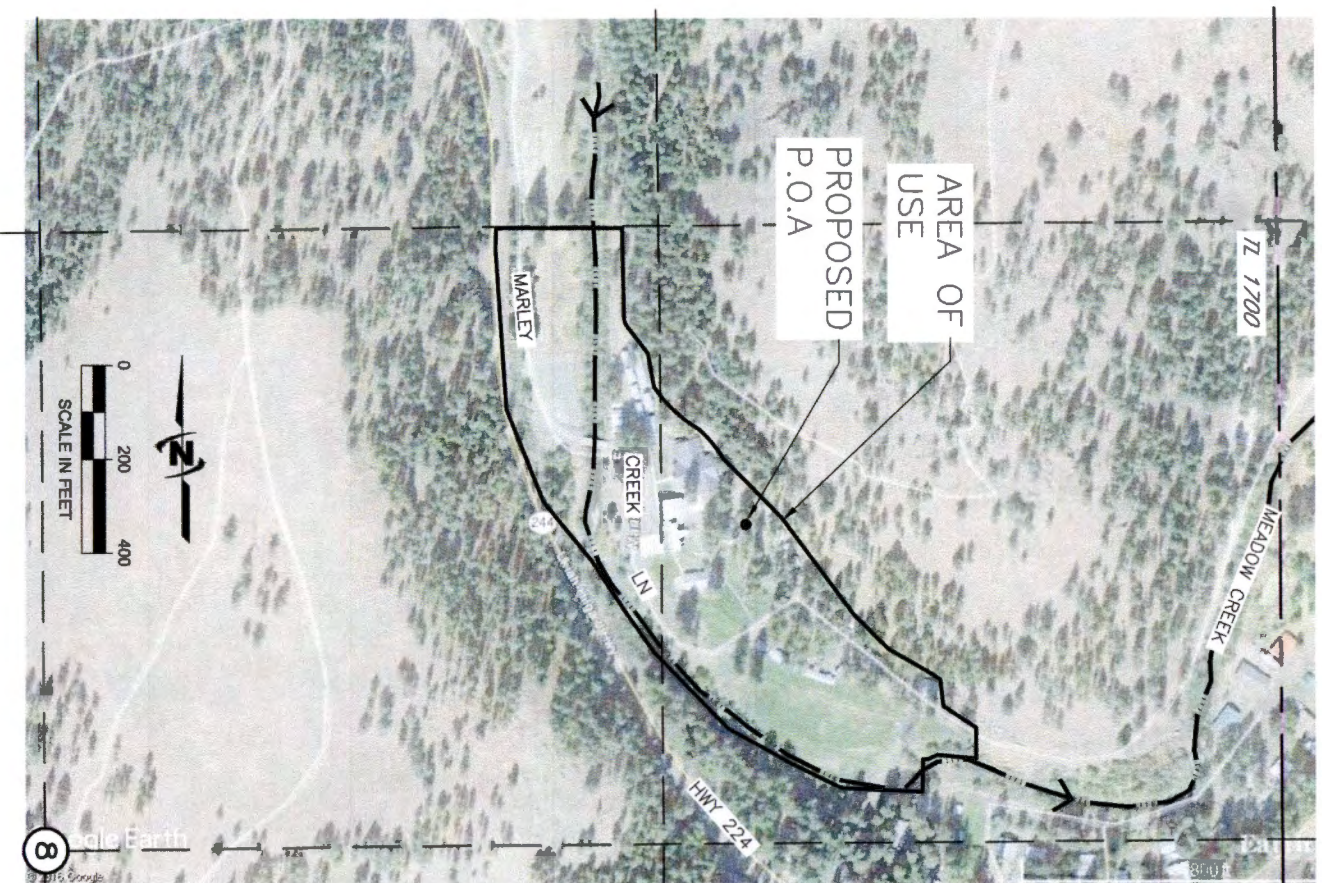
G-18523

RECEIVED

JUN 08 2017

OWPRD

BLUE MOUNTAIN CONSERVATIVE BAPTIST ASS.
CAMP ELKANAH
GROUND WATER APPLICATION MAP FOR A PERMIT
SEC 8., T. 4S., R. 35E. W.M.
UNION COUNTY, OREGON



PROPOSED P.O.A.
WELL LOCATED 695'N AND 1495'E FROM THE
CENTER SEC 8, T4S, R35E WM

RECEIVED BY OWRD

MAY 30 2017

SALEM, OR

THE PURPOSE OF THIS MAP IS TO IDENTIFY THE APPROXIMATE LOCATION OF THE WATER
RIGHT. IT IS NOT INTENDED TO PROVIDE INFORMATION RELATIVE TO THE LOCATION OF
PROPERTY OWNERSHIP BOUNDARY LINES.

DRAWING: \\kwikties\public\Project\30--08--016 - Porfly Water Rights Consulting\--00 Misc Engineering\Cad\Elkana\30--08--016 ELK.dwg
PRINTED BY: willard on 05/11/17 12:26 PM

6-188823