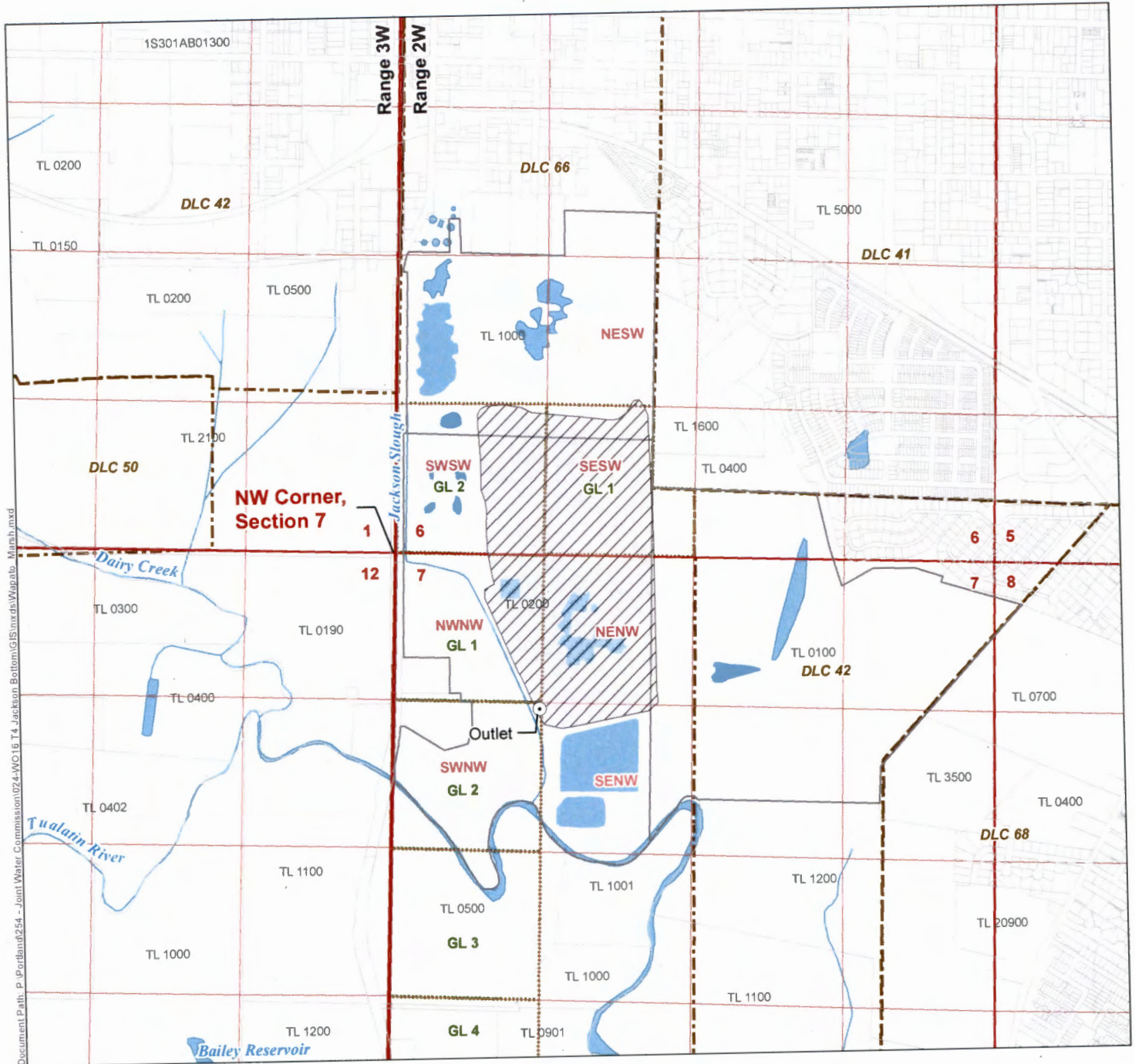


Application for a Permit to Store Water In the Name of City of Hillsboro

Washington County
Township 1 South, Range 2 West (W.M.)



Document Path: P:\Portland\254 - Joint Water Commission\074-WD16 T4 Jackson Bottom\GIS\Source\MapInfo - Marsh.mxd

- Proposed Point of Diversion (POD)
- Proposed Place of Use (POU)
- Donation Land Claim (DLC)
- Government Lot (GL)
- Taxlots
- Waterbodies
- Watercourses

POD Legal Description
Outlet
 Located 1365 feet South and 1300 feet East from the NW corner of Section 7, Township 1 South, Range 2 West (W.M.)

R-08419

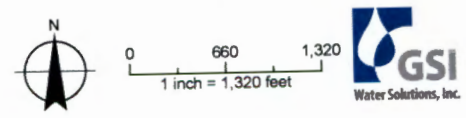
RECEIVED BY OWRD

JUN 15 2017

SALEM, OR

DISCLAIMER
 This map was prepared for the purpose of identifying the location of a water right only and it is not intended to provide legal dimensions or location of property ownership lines.

MAP NOTES
 Date: December 14, 2016

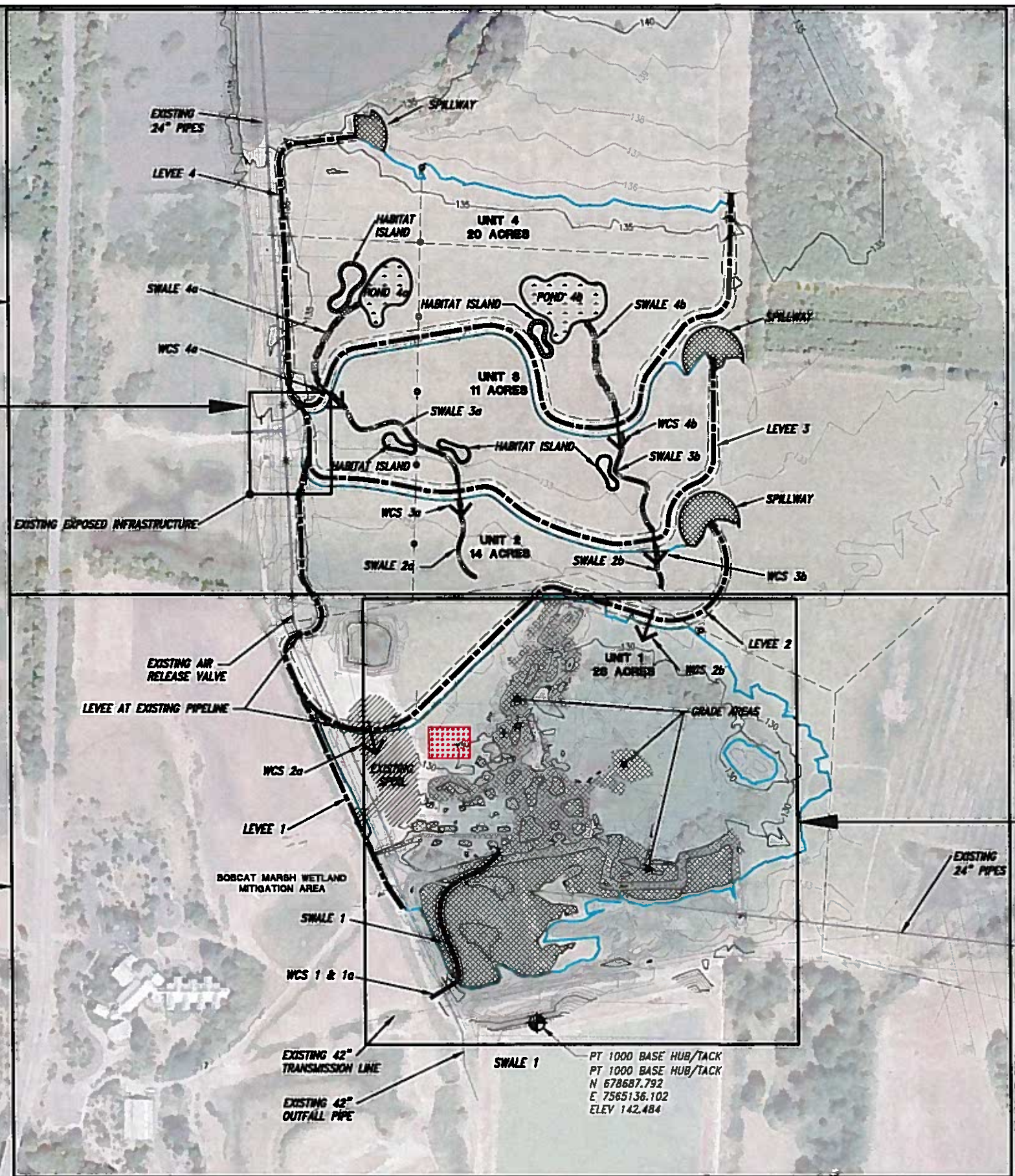




SHEET 7

SHEET 13

SHEET 8



LEGEND

- LEVEE
- SPILLWAY
- WATER CONTROL STRUCTURE
- PONDS
- HABITAT ISLANDS
- SWALES
- GRADED AREAS
- WATER SURFACE
- EXISTING SPOIL
- STAGING AREA
- EXISTING RISER

RECEIVED BY OWRD

JUN 15 2017

SALEM, OR

NOTE FOR DETAILS OF EXISTING INFRASTRUCTURE SEE RECORD DRAWINGS SHEETS 13-20.

RECORD DRAWING

C:\PROJECTS\184-2 RECORD\PROJECT\JACKSON\dwg_06_184-001.dwg 4/14/2015 2:12:03 PM

Utility Notification Center
CALL BEFORE YOU DIG

UNAUTHORIZED CHANGES & USES
THE ENGINEER PREPARING THESE PLANS WILL NOT BE RESPONSIBLE FOR, OR LIABLE FOR, UNAUTHORIZED CHANGES TO OR USES OF THESE PLANS. ALL CHANGES MUST BE IN WRITING AND MUST BE APPROVED BY THE PREPARER OF THESE PLANS.

NOTE: DUCKS UNLIMITED WILL PROVIDE CONSTRUCTION STAKING AND/OR VERTICAL CONTROL FOR THE CONTRACTOR.

SURVEY DATUM		REVISIONS			
SURVEY DATE:	5/28/2009, 10/21/2010	REV. NO.	DESCRIPTION	DATE	APPROVED
HORIZONTAL DATUM:	OREGON STATE PLANE NORTH ZONE NAD83	△			
VERTICAL DATUM:	NAVD88	△			
GEOID MODEL:	98	△			
CONTOUR INTERVAL:	1'	△			
AERIAL PHOTO:	15 AUG 2010	△			

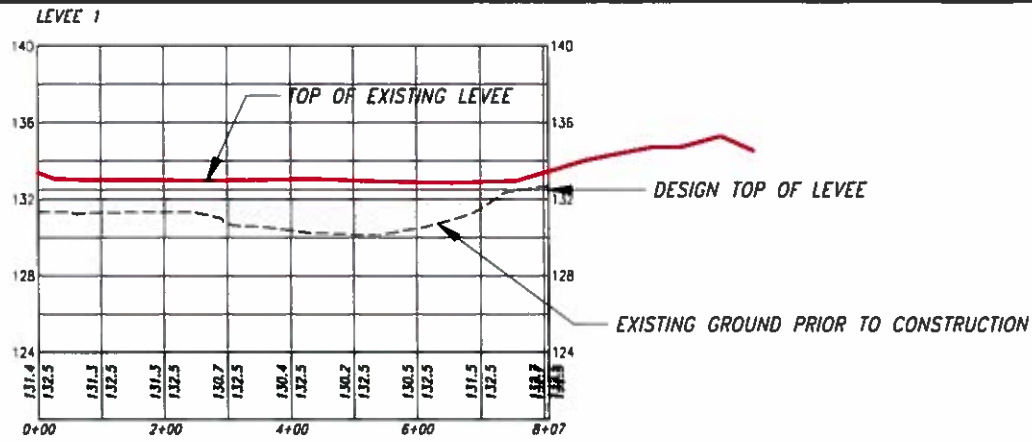
DUCKS UNLIMITED INC.
PacNW Field Office
(360) 885-2011
DATE: JUNE 2011 SHEET NO. 6

GENERAL INFORMATION	
PROJECT NO. OR-184-1	DESIGNED BY: AJS
JACKSON BOTTOM PLAN SHEET INDEX	DRAWN BY: DMC
APPROVED BY:	SURVEYED BY: JPS
	CHECKED BY:

R-8840

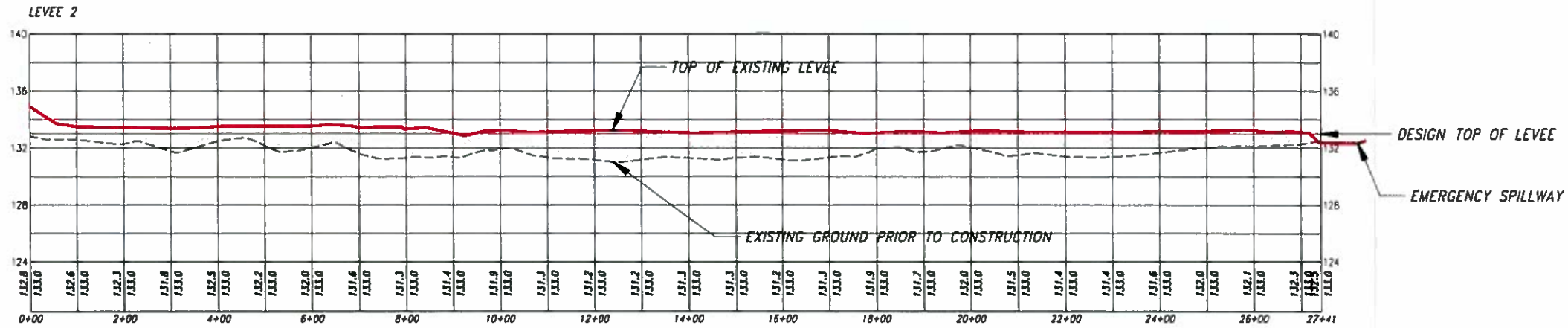
UNIT 1		
WATER SURFACE ELEVATION	SURFACE AREA (AC)	TOTAL VOLUME (AC-FT)
128.0	0.7	0.1
129.0	8.2	8.4
130.0	19.2	27.6
131.0	28.4	56.0
131.5	30.9	71.5

DESIGN WSEL=131.0
EXISTING NATURAL SPILLWAY=131.0



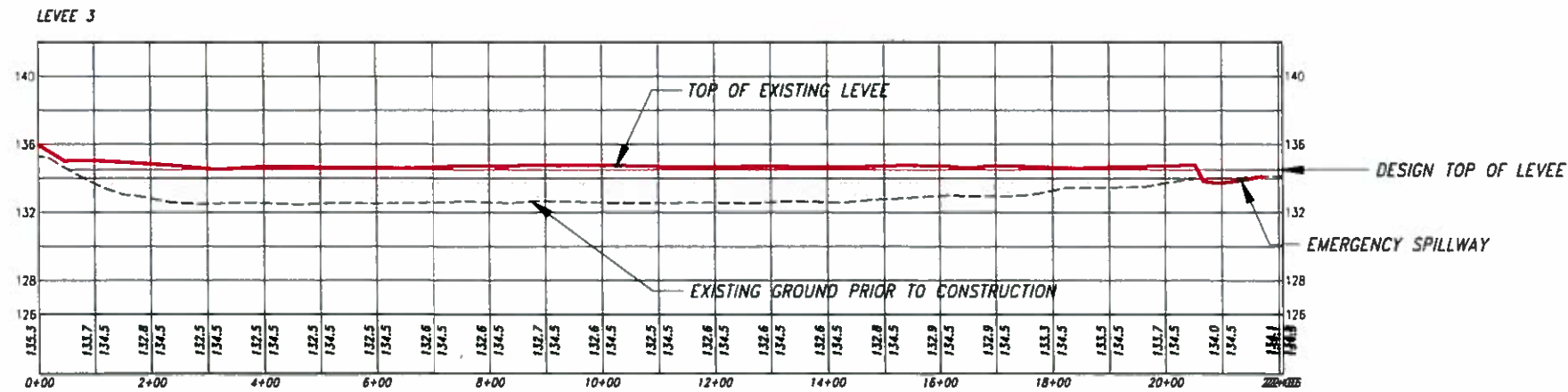
UNIT 2		
WATER SURFACE ELEVATION	SURFACE AREA (AC)	TOTAL VOLUME (AC-FT)
128.0	0.0	0.0
130.0	0.4	0.8
131.0	0.6	1.4
132.0	9.2	10.6
132.5	12.5	16.9
133.0	15.3	24.5

DESIGN WSEL=132.5
EMERGENCY SPILLWAY DESIGN ELEVATION=132.5
EMERGENCY SPILLWAY AS-BUILT ELEVATION=132.2



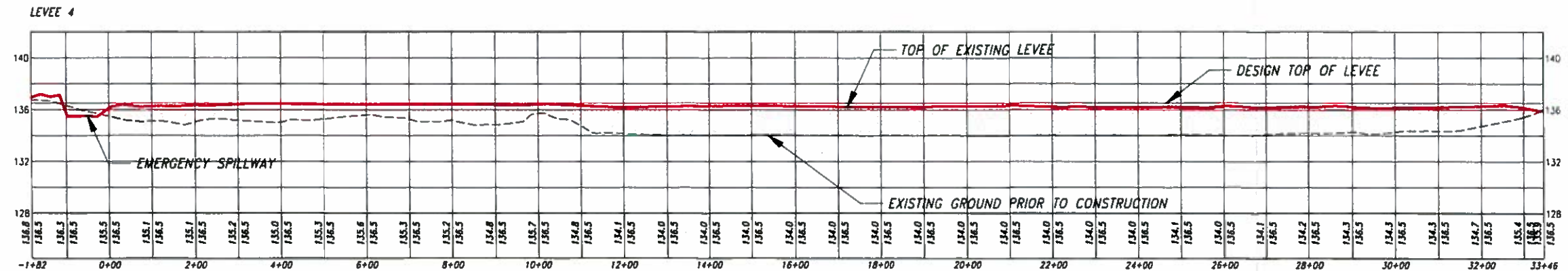
UNIT 3		
WATER SURFACE ELEVATION	SURFACE AREA (AC)	TOTAL VOLUME (AC-FT)
132.5	0.1	0.1
133.0	2.2	1.2
134.0	12.4	13.7
134.5	12.7	20.0

DESIGN WSEL=134.0
EMERGENCY SPILLWAY DESIGN ELEVATION=134.0
EMERGENCY SPILLWAY AS-BUILT ELEVATION=133.7



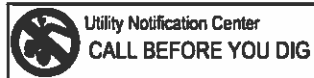
UNIT 4		
WATER SURFACE ELEVATION	SURFACE AREA (AC)	TOTAL VOLUME (AC-FT)
133.5	1.3	0.7
134.0	1.8	1.6
135.0	17.2	18.8
135.5	19.1	28.3
136.0	20.6	38.6

DESIGN WSEL=135.5
EMERGENCY SPILLWAY DESIGN ELEVATION=135.5
EMERGENCY SPILLWAY AS-BUILT ELEVATION=135.4



RECEIVED BY OWRD
JUN 15 2017
SALEM, OR

RECORD DRAWING



UNAUTHORIZED CHANGES & USES
THE ENGINEER PREPARING THESE PLANS WILL NOT BE RESPONSIBLE FOR, OR LIABLE FOR, UNAUTHORIZED CHANGES TO OR USES OF THESE PLANS. ALL CHANGES MUST BE IN WRITING AND MUST BE APPROVED BY THE PREPARER OF THESE PLANS.

SURVEY DATUM	
SURVEY DATE:	5/28/2009, 10/21/2010
HORIZONTAL DATUM:	OREGON STATE PLANE NORTH ZONE NAD83
VERTICAL DATUM:	NAVD88
GEOD MODEL:	99
CONTOUR INTERVAL:	1'
AERIAL PHOTO:	15 AUG 2010

REVISIONS			
REV. NO.	DESCRIPTION	DATE	APPROVED
1	DRAWINGS OF RECORD	3/18/15	RVN



PROJECT NO. OR-184-1		GENERAL INFORMATION	
JACKSON BOTTOM PROFILES AND POND VOLUMES		DESIGNED BY:	AJS
		DRAWN BY:	DMC
		SURVEYED BY:	JPS
		CHECKED BY:	
APPROVED BY:			

R-8045