

W.R. 362
LAWRENCE E. GREGORY
 (LUELLE M. HERMAN)

SEC. 31 T. 11 S. R. 4 W. W.M.

LOCATION OF
 EXISTING WELLS

SCALE 1" = 400' JULY 1956
 Harold W. Poling Datum From
 Reg. Prof. Engr. C.S. No 1894



T. 11 S. R. 5 W. W.M.
 T. 11 S. R. 4 W. W.M.

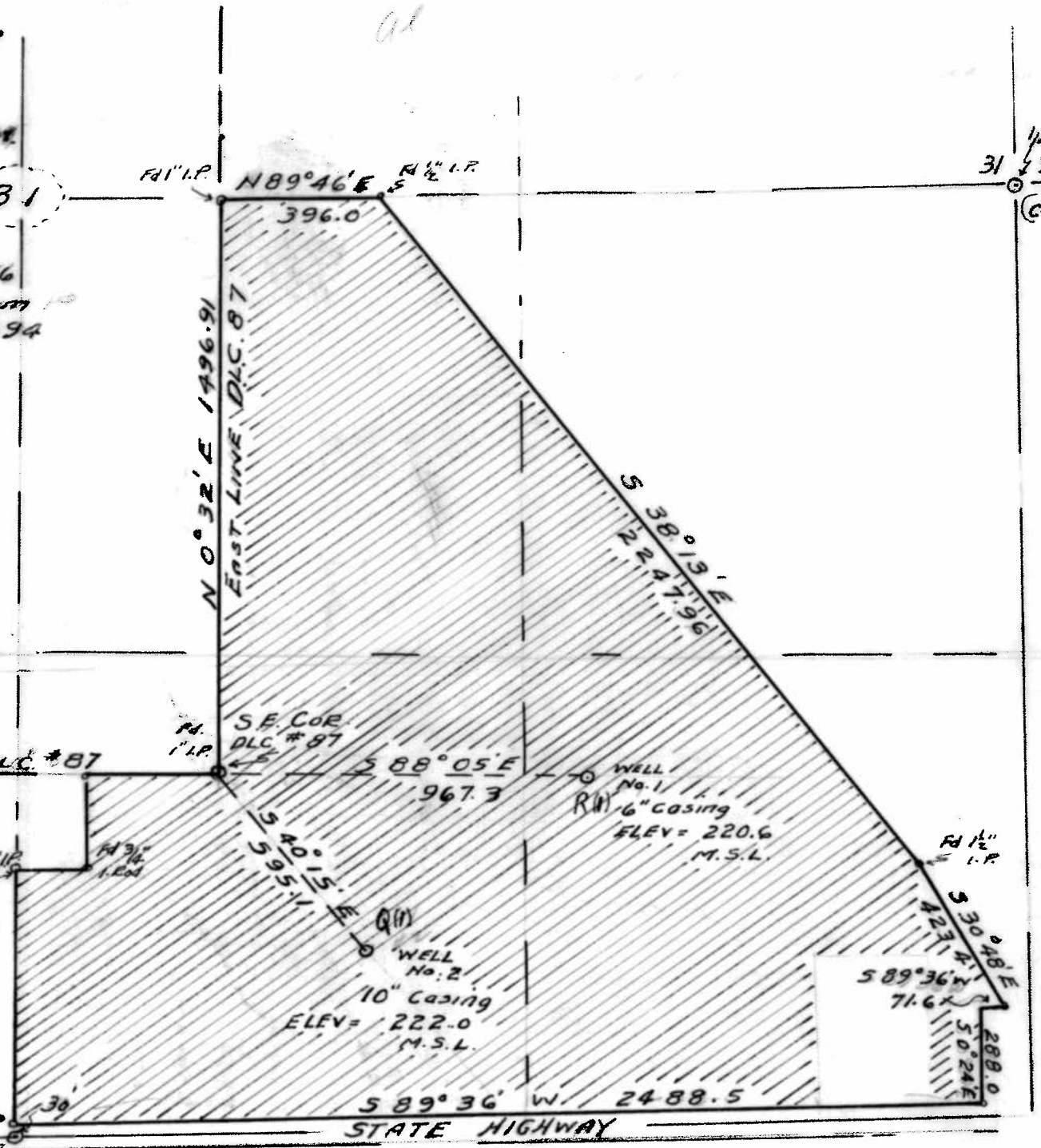
31

1/4 COR
 31 32
 (C.S. 189)

I, Harold W. Poling, a Registered Engineer of Albany Oregon, do hereby certify that this map was made from notes taken during an actual survey made by me on July 5, 1956; that monuments shown on this map, consisting of wells No. 1 & 2, respectively bear S 88° 05' E 967.3 ft, and S 40° 15' E 595.1 ft, from the S.E. Corner of the Chas. Mulkey D.L.C. No. 87 in T. 11 S. R. 4 W. W.M.

Harold W. Poling

SW COR.
 CHAS. MULKEY D.L.C.
 (C.S. 1894)



36 31