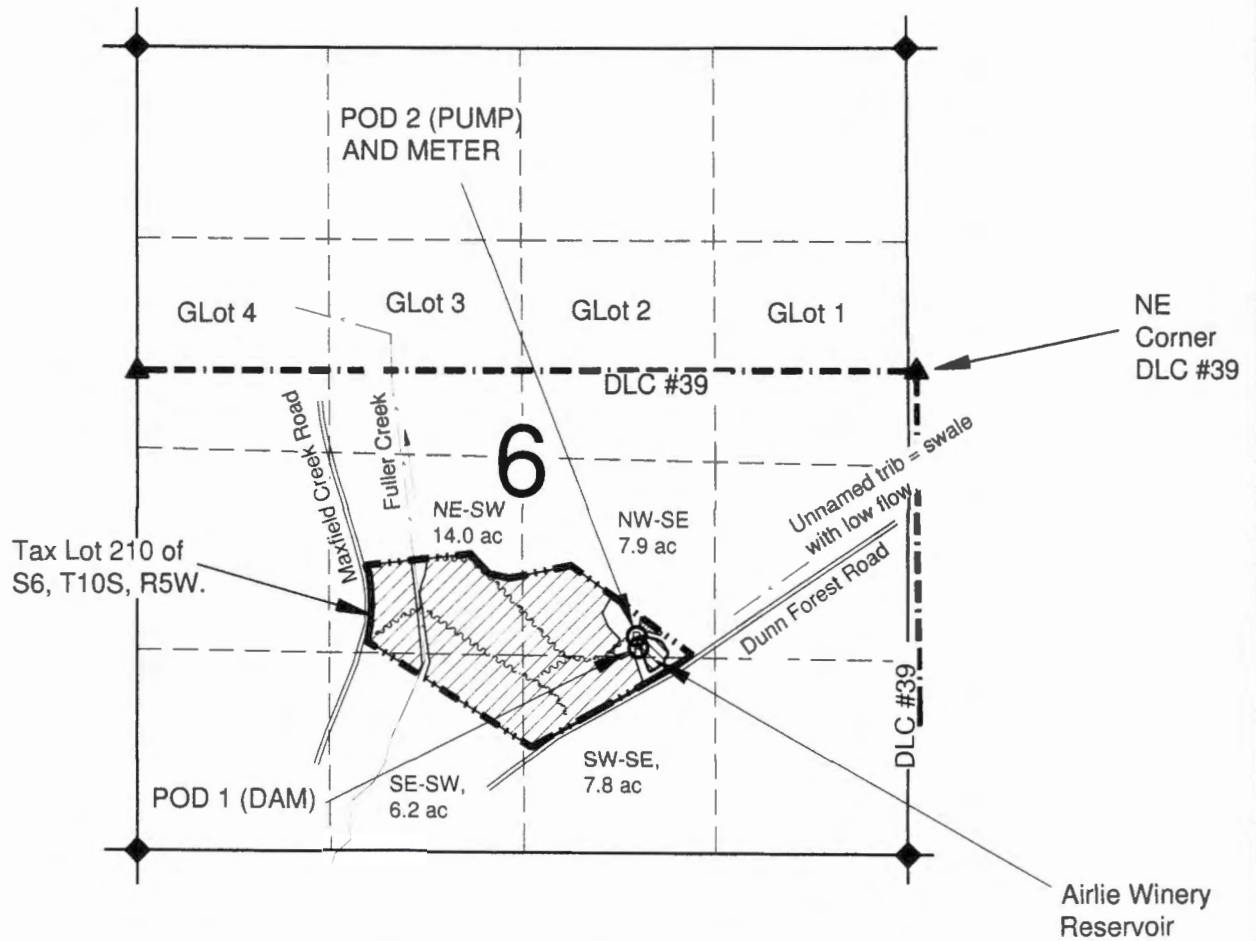


MAP FOR
Water Right Applications Map
 SOUTH 1/2, S6, T10S, R5W, POLK COUNTY



POD 1 (Dam) (west edge of reservoir) is 1420' N & 1840' W and
 POD 2 (Pump) (NW of reservoir) is 1490' N & 1860' W of SE S6.

NOTES:

- THE SECTION, DLC, AND AND PROPERTY LINES ARE FROM A SCALED TAX ASSESSOR MAP FOR SECTION 6 OF T10S, R5W.
- GOVERNMENT LOTS (GLot) ARE FROM GENERAL LAND OFFICE RECORDS.
- NO CREEK FLOWS IN OR OUT THE SUBJECT RESERVOIR, IT IS A SMALL DRAINAGE SWALE.

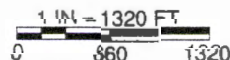
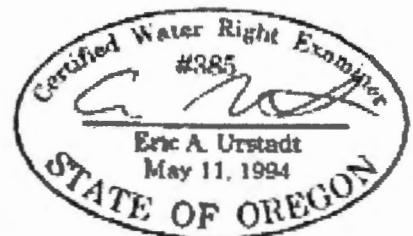
LEGEND

- ▲ DONATION LAND CLAIM (DLC) CORNER
- ◆ SECTION OR QUARTER CORNER
- Ⓟ PROPOSED POINT OF DIVERSION (POD)
- ~~~~~ UNDERGROUND PIPELINE (APPROXIMATE LOCATION)
- - - - QUARTER-QUARTER LINE
- — — — DLC LINE
- — — — TAX LOT LINE
- — — — SECTION LINE
- - - - STREAM OR SURFACE DRAINAGE.
- ▨ IRRIGATED AREA.

RECEIVED BY OWRD

JUL 27 2017

SALEM, OR



MAP BY:
ASPEN RURAL LAND CONSULTING
 ERIC URSTADT, PE, PLS
 971-250-1520
 Sep 2016
 Airlie2A

THIS MAP IS NOT INTENDED TO PROVIDE LEGAL DIMENSIONS OR LOCATIONS OF PROPERTY OWNERSHIP LINES.

R-88432