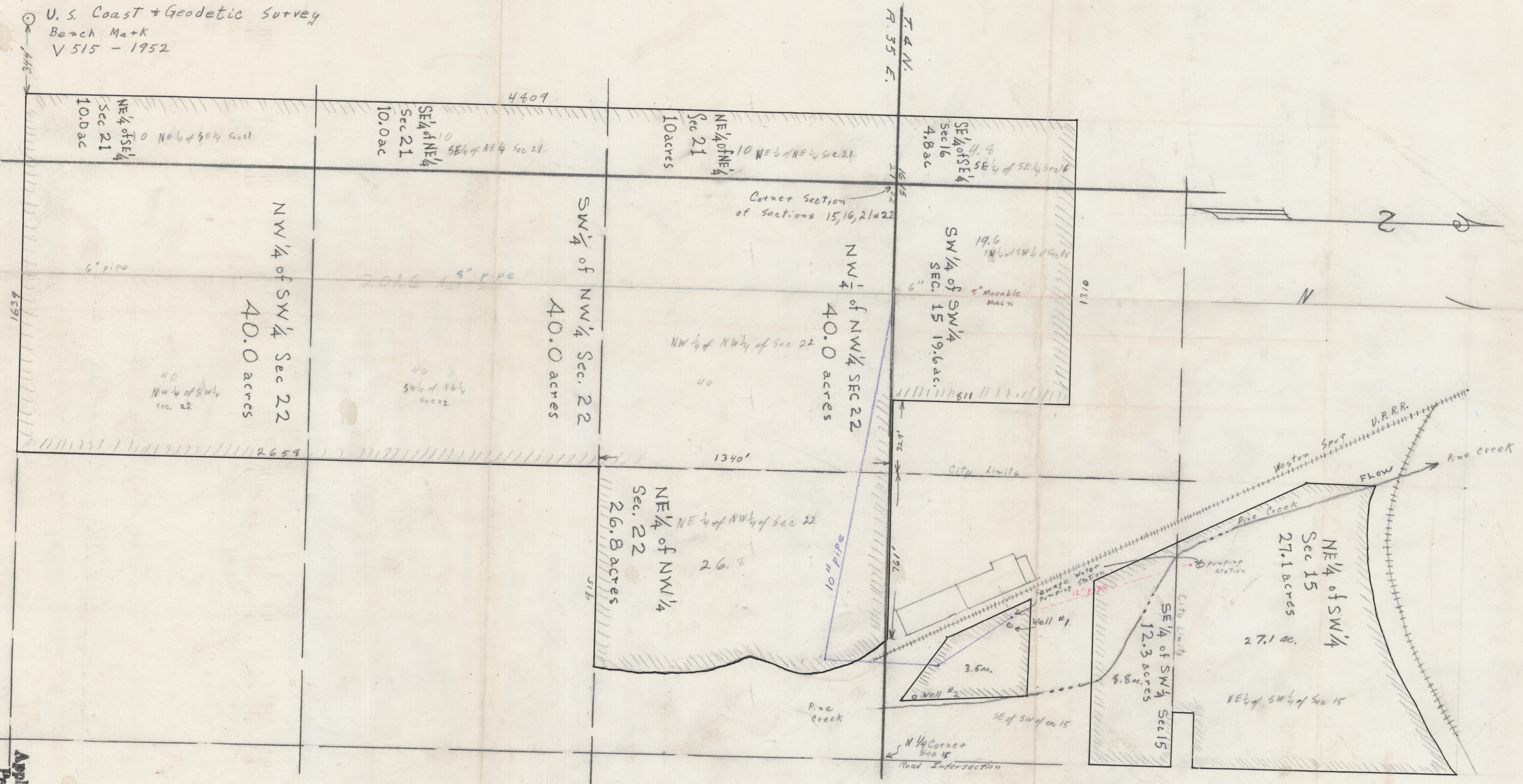


U. S. Coast + Geodetic Survey
Bench Mark
V 515 - 1952



Map Showing Areas Irrigated from
Lamb-Weston, Imas' Wells # 1 + 2.
Irrigated Areas outlined in Ink.

RECEIVED
DEC 22 1952
STATE ENGINEER
SALEM, OREGON

Application No. U-552
Permit No. U-504

U-552