

R-88446

ZACHARY WELCH  
MANDOLIN CREEK POND 1,  
POND 2, AND POND 3  
EXHIBIT MAP  
MAY 19, 2017

TAXLOT 1300, MAP 11705

RESERVOIRS LOCATED IN THE NW 1/4  
OF THE NE 1/4 OF SECTION 8  
TOWNSHIP 11 SOUTH, RANGE 5 WEST,  
W.M.

**LEGEND**

- TAXLOT BOUNDARY
- - - SECTION BOUNDARY
- ⊕ DAM
- ⊗ 1/4 CORNER MONUMENT

SCALE 1" = 400'

DISTANCE FROM 1/4  
CORNER TO DAM 1:  
287' EAST, 189' SOUTH

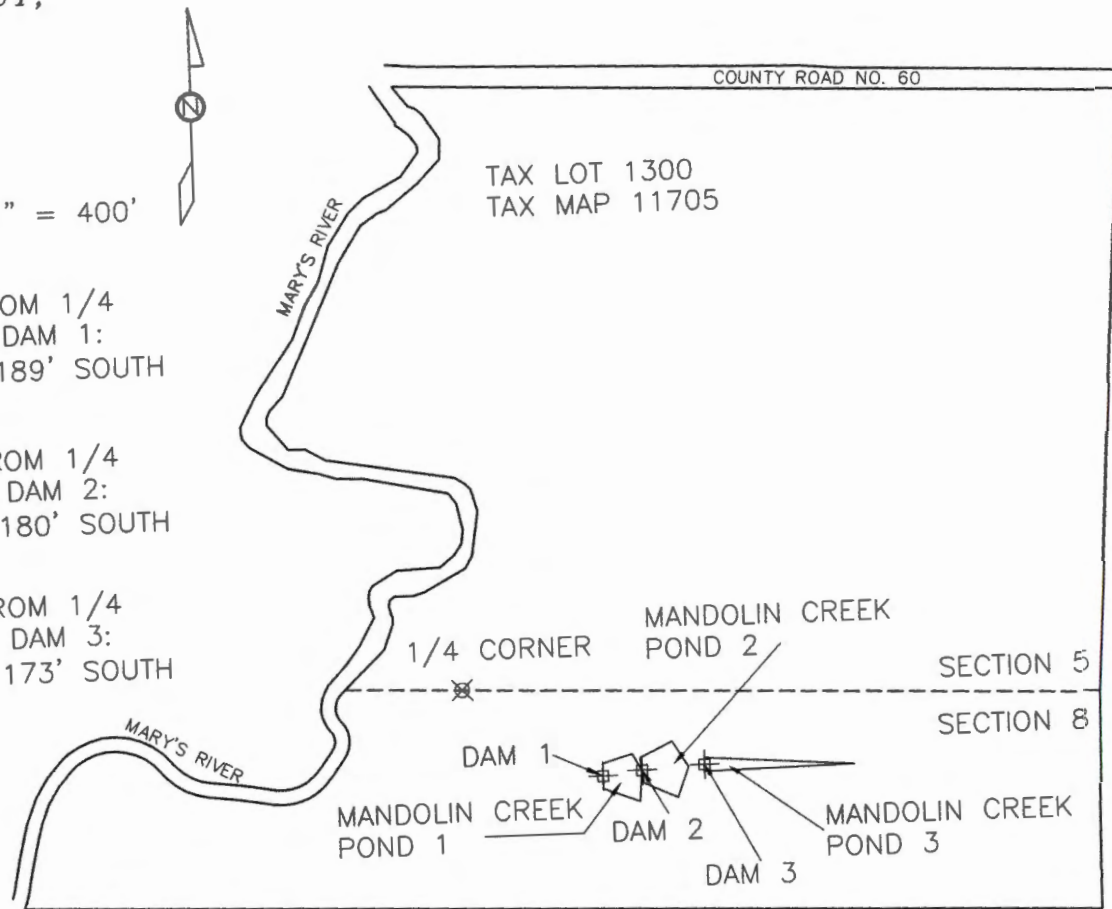
DISTANCE FROM 1/4  
CORNER TO DAM 2:  
367' EAST, 180' SOUTH

DISTANCE FROM 1/4  
CORNER TO DAM 3:  
497' EAST, 173' SOUTH

RECEIVED BY OWRD

AUG 18 2017

SALEM, OR



**JDMcGee, Inc.**

Engineering & Surveying  
Land Use Planning  
Wastewater Design  
"Solving Problems for You"  
1215 Main Street  
PO Box 1472  
Philomath, OR 97370  
(541) 929-4226  
(541) 929-4227 fax

DRAWN BY: RJM  
JDM PROJECT #: 16-75

CHECKED BY: JDM